

Supplementary material

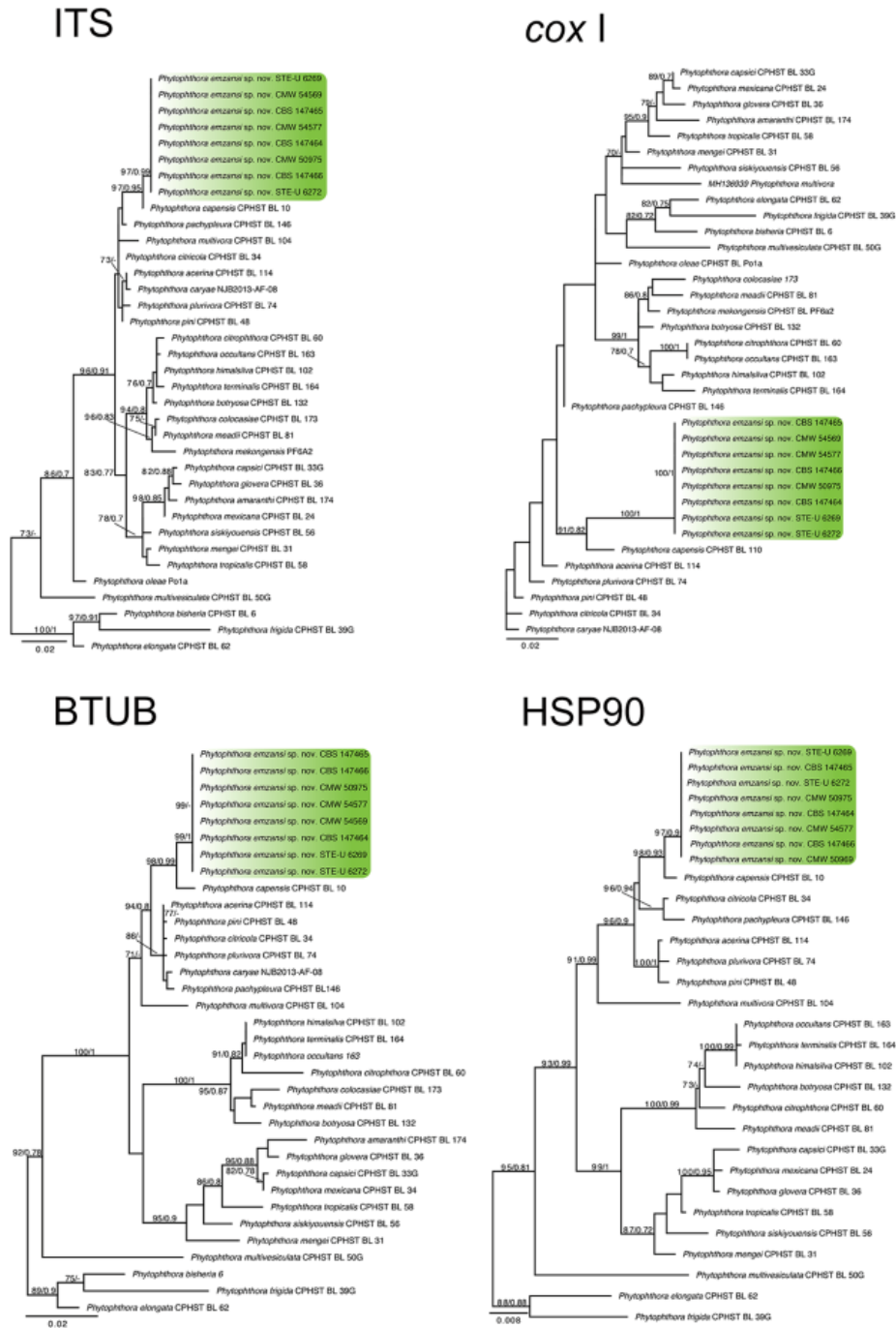
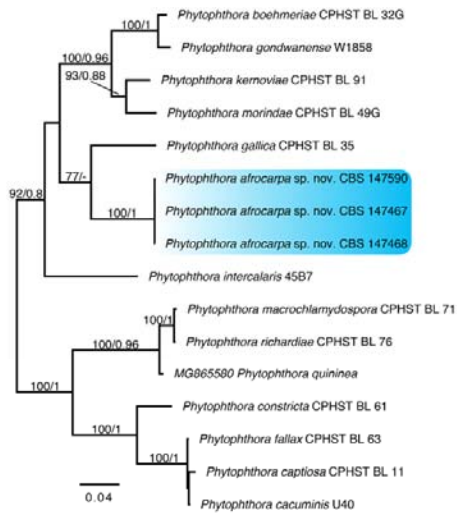
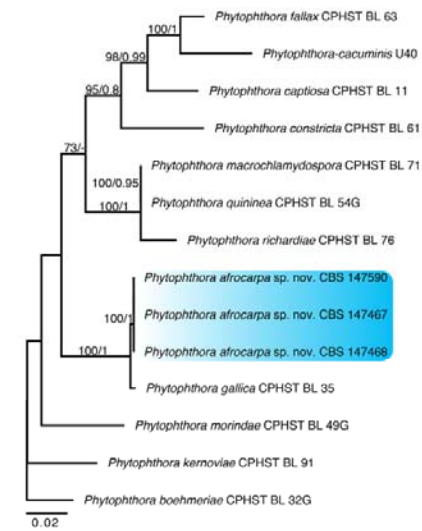


Fig. S1 Maximum likelihood phylogenies using single-gene datasets for ITS Clade 2 *Phytophthora* species. In all analyses, *Phytophthora emzansi* sp. nov. formed monophyletic lineages (highlighted in green). *Phytophthora cinnamomi* CPHST BL 12 was used as an outgroup taxon (not shown). Numbers on the branches are bootstrap values (≥ 70) / posterior probabilities (≥ 0.7)

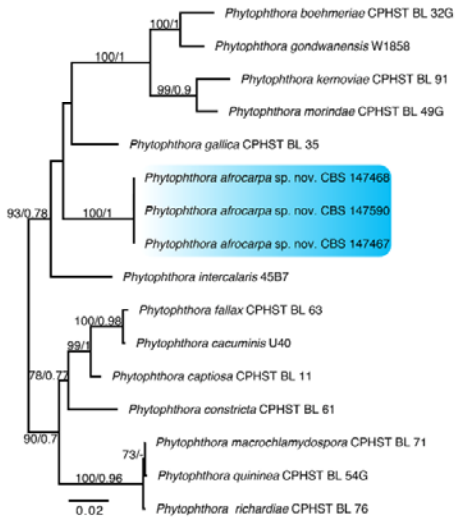
ITS



COX I



BTUB



HSP90

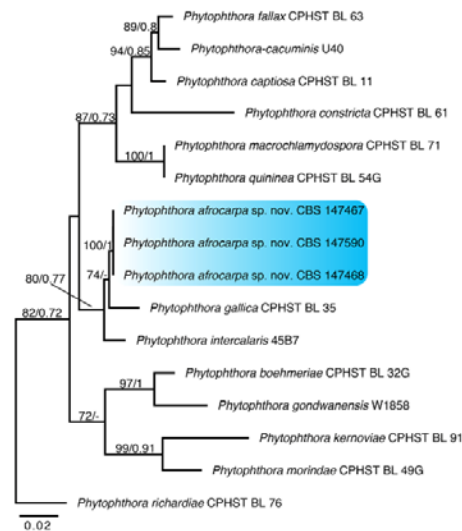


Fig. S2 Maximum likelihood phylogenies using single-gene datasets for ITS Clade 10 *Phytophthora* species. In all analyses, *Phytophthora afrocarpa* sp. nov. formed monophyletic lineages (highlighted in blue). *Phytophthora alticola* CBS141718 and *P. nicotianae* CPHST BL 44 were used as outgroup taxa (not shown). Numbers on the branches are bootstrap values (≥ 70) / posterior probabilities (≥ 0.7)