

SUPPLEMENTARY INFORMATION

Table S1. Sampling localities and specimens or Genbank sequences sampled for molecular (Mol), traditional (TM) and geometric (GM) morphometric, and bacular (Bac) analysis. Abbreviations of museums provided in text. Bold face indicates type specimens.

Taxon	Mol	TM	GM	Bac	Acc No	Sex	Country	Locality	Latitude	Longitude
<i>R. gorongosae</i> sp. nov.	X	X	X		DM 14815	F	Mozambique	Sofala Province, Gorongosa National Park, Bunga Inselberg	-18.599°	34.343°
<i>R. gorongosae</i> sp. nov.		X	X		DM 14816	M	Mozambique	Sofala Province, Gorongosa National Park, Bunga Inselberg	-18.599°	34.343°
<i>R. gorongosae</i> sp. nov.		X	X		DM 14817	M	Mozambique	Sofala Province, Gorongosa National Park, Bunga Inselberg	-18.599°	34.343°
<i>R. gorongosae</i> sp. nov.		X			DM 14818	F	Mozambique	Sofala Province, Gorongosa National Park, Bunga Inselberg	-18.599°	34.343°
<i>R. gorongosae</i> sp. nov.		X	X		DM 14819	M	Mozambique	Sofala Province, Gorongosa National Park, Bunga Inselberg	-18.599°	34.343°
<i>R. gorongosae</i> sp. nov.	X	X	X	X	DM 14820	M	Mozambique	Sofala Province, Gorongosa National Park, Bunga Inselberg	-18.599°	34.343°
<i>R. gorongosae</i> sp. nov.		X	X	X	DM 14865	M	Mozambique	Sofala Province, Gorongosa National Park, Bunga Inselberg	-18.599°	34.343°
<i>R. gorongosae</i> sp. nov.			X		DM 14864	F	Mozambique	Sofala Province, Gorongosa National Park, Mount Gorongosa	-18.466°	34.052°
<i>R. gorongosae</i> sp. nov.		X	X		DM 14828	F	Mozambique	Sofala Province, Gorongosa National Park, Vunduzi,	-18.603°	34.336°
<i>R. gorongosae</i> sp. nov.	X		X		DM 14843	F	Mozambique	Sofala Province, Gorongosa National Park	-18.694°	34.208°
<i>R. gorongosae</i> sp. nov.		X	X	X	TMSA 49116	U	Mozambique	Sofala Province, Gorongosa National Park, Cheringoma Plateau	-18.635°	34.808°
<i>R. swinnyi</i>			X		DM 13250	U	R. of South Africa	Eastern Cape Province, Insizwe Mine, 8 km W of Mount Ayliff	-30.804°	29.281°
<i>R. swinnyi</i>			X		DM 13252	U	R. of South Africa	Eastern Cape Province, Insizwe Mine, 8 km W of Mount Ayliff	-30.804°	29.281°
<i>R. swinnyi</i>		X	X		DM 13254	U	R. of South Africa	Eastern Cape Province, Insizwe Mine, 8 km W of Mount Ayliff	-30.804°	29.281°
<i>R. swinnyi</i>		X	X	X	DM 7084	M	R. of South Africa	Eastern Cape Province, Insizwe Mine, 8 km W of Mount Ayliff	-30.804°	29.281°
<i>R. swinnyi</i>		X	X		DM 14440	M	R. of South Africa	Eastern Cape Province, Kokstad Mine	-30.810°	29.280°
<i>R. swinnyi</i>		X	X		DM 14441	F	R. of South Africa	Eastern Cape Province, Kokstad Mine	-30.810°	29.280°
<i>R. swinnyi</i>		X	X		DM 15018	F	R. of South Africa	Eastern Cape Province, Sandile's Rest Country Estate	-32.661°	27.298°
<i>R. swinnyi</i>	X	X			TMSA 1021	M	R. of South Africa	Eastern Cape Province, Transkei, Ngqueleni District	-31.667°	29.033°
<i>R. swinnyi</i>	X				TMSA 1022	M	R. of South Africa	Eastern Cape Province, Transkei, Ngqueleni District	-31.667°	29.033°
<i>R. swinnyi</i>				X	DM 7264	M	R. of South Africa	KwaZulu-Natal Province, Boston, Virginia Farm	-29.991°	30.609°
<i>R. swinnyi</i>			X		DM 14291	F	R. of South Africa	KwaZulu-Natal Province, Eshowe, Entumeni Nature Reserve	-28.886°	31.376°
<i>R. swinnyi</i>		X	X		DM 14292	F	R. of South Africa	KwaZulu-Natal Province, Eshowe, Entumeni Nature Reserve	-28.886°	31.376°
<i>R. swinnyi</i>		X			TMSA 39848	M	R. of South Africa	KwaZulu-Natal Province, Ngome Forest Reserve, 70 km NE Vryheid	-27.833°	31.413°
<i>R. swinnyi</i>		X	X		DM 14035	F	R. of South Africa	KwaZulu-Natal Province, Pietermaritzburg, Ferncliff Nature Reserve	-29.550°	30.320°
<i>R. swinnyi</i>		X	X	X	DM 14036	M	R. of South Africa	KwaZulu-Natal Province, Pietermaritzburg, Ferncliff Nature Reserve	-29.550°	30.320°
<i>R. swinnyi</i>				X	DM 5456	M	R. of South Africa	KwaZulu-Natal Province, Umtamvuna Nature Reserve	-31.016°	30.154°
<i>R. swinnyi</i>		X			BMNH 4.9.1.91	M	R. of South Africa	Mpumalanga Province, Wakkerstrom, Zuurbran	-	-

Table S1. Continued...

Taxon	Mol	TM	GM	Bac	Acc No,	Sex	Country	Locality	Latitude	Longitude
<i>R. swinnyi rhodesiae</i>		X	X		TMSA 1325	F	Zimbabwe	Masvingo Province, Bezwa River	-21.500°	31.167°
<i>R. rhodesiae</i>		X	X		DM 11270	F	Mozambique	Inhambane Province, Chihalatan Cave	-21.671°	34.864°
<i>R. rhodesiae</i>		X	X	X	DM 11271	M	Mozambique	Inhambane Province, Chihalatan Cave	-21.671°	34.864°
<i>R. rhodesiae</i>		X	X		DM 11272	F	Mozambique	Inhambane Province, Chihalatan Cave	-21.671°	34.864°
<i>R. rhodesiae</i>		X	X	X	DM 11273	M	Mozambique	Inhambane Province, Chihalatan Cave	-21.671°	34.864°
<i>R. rhodesiae</i>		X		X	DM 11275	M	Mozambique	Inhambane Province, Chihalatan Cave	-21.671°	34.864°
<i>R. rhodesiae</i>	X	X	X		FMNH 228942	M	Mozambique	Inhambane Province, Malashane Cave	-21.671°	34.864°
<i>R. rhodesiae</i>	X	X	X	X	FMNH 228943	M	Mozambique	Inhambane Province, Malashane Cave	-21.671°	34.864°
<i>R. rhodesiae</i>	X	X	X		FMNH 228944	F	Mozambique	Inhambane Province, Malashane Cave	-21.671°	34.864°
<i>R. rhodesiae</i>	X	X	X		FMNH 228946	F	Mozambique	Inhambane Province, Malashane Cave	-21.671°	34.864°
<i>R. rhodesiae</i>	X	X	X		FMNH 228948	M	Mozambique	Inhambane Province, Malashane Cave	-21.671°	34.864°
<i>R. rhodesiae</i>	X	X	X		FMNH 228949	F	Mozambique	Inhambane Province, Malashane Cave	-21.671°	34.864°
<i>R. rhodesiae</i>	X	X	X		FMNH 228950	F	Mozambique	Inhambane Province, Malashane Cave	-21.671°	34.864°
<i>R. rhodesiae</i>	X	X	X		FMNH 228951	F	Mozambique	Inhambane Province, Malashane Cave	-21.671°	34.864°
<i>R. rhodesiae</i>	X	X	X		FMNH 228952	M	Mozambique	Inhambane Province, Malashane Cave	-21.671°	34.864°
<i>R. rhodesiae</i>	X	X	X		FMNH 228953	M	Mozambique	Inhambane Province, Malashane Cave	-21.671°	34.864°
<i>R. rhodesiae</i>	X	X	X		FMNH 228955	M	Mozambique	Inhambane Province, Malashane Cave	-21.671°	34.864°
<i>R. rhodesiae</i>	X	X	X		FMNH 228957	F	Mozambique	Inhambane Province, Malashane Cave	-21.671°	34.864°
<i>R. rhodesiae</i>	X	X	X		FMNH 228958	F	Mozambique	Inhambane Province, Malashane Cave	-21.671°	34.864°
<i>R. rhodesiae</i>	X	X			FMNH 228959	F	Mozambique	Inhambane Province, Malashane Cave	-21.671°	34.864°
<i>R. rhodesiae</i>	X	X			FMNH 228960	F	Mozambique	Inhambane Province, Malashane Cave	-21.671°	34.864°
<i>R. rhodesiae</i>	X	X	X		FMNH 228961	M	Mozambique	Inhambane Province, Malashane Cave	-21.671°	34.864°
<i>R. rhodesiae</i>	X	X	X		FMNH 228962	M	Mozambique	Inhambane Province, Malashane Cave	-21.671°	34.864°
<i>R. rhodesiae</i>			X		FMNH 228963	M	Mozambique	Inhambane Province, Malashane Cave	-21.671°	34.864°
<i>R. rhodesiae</i>	X	X	X		FMNH 228964	F	Mozambique	Inhambane Province, Malashane Cave	-21.671°	34.864°
<i>R. rhodesiae</i>		X	X		DM 13450	F	Mozambique	Niassa Province, Mount Mecula	-12.068°	37.662°
<i>R. rhodesiae</i>		X	X		DM 13451	F	Mozambique	Niassa Province, Mount Mecula	-12.068°	37.662°
<i>R. rhodesiae</i>		X	X	X	DM 7080	M	R. of South Africa	KwaZulu-Natal Province, Hlabeni Forest Reserve	-29.933°	29.766°
<i>R. rhodesiae</i>		X	X	X	DM 12007	M	R. of South Africa	KwaZulu-Natal Province, Pietermaritzburg, Ferncliff Nature Reserve	-29.550°	30.320°
<i>R. rhodesiae</i>		X	X	X	DM 14034	M	R. of South Africa	KwaZulu-Natal Province, Pietermaritzburg, Ferncliff Nature Reserve	-29.550°	30.320°

Table S1. Continued...

Genus	Mol	TM	GM	Bac	Acc No,	Sex	Country	Locality	Latitude	Longitude
<i>rhodesiae</i>		X	X		TMSA 34210	M	R. of South Africa	Limpopo Province, Kruger National Park, Pafuri	-22.433°	31.183
<i>rhodesiae</i>			X		TMSA 36101	F	R. of South Africa	Limpopo Province, Kruger National Park, Pafuri	-22.433°	31.183
<i>rhodesiae</i>		X	X		TMSA 37040	M	R. of South Africa	Limpopo Province, Kruger National Park, Pafuri	-22.417°	31.300
<i>rhodesiae</i>		X			BMNH 68.1396	F	Zambia	Central Province, Ngwerere Railroad Siding	-15.300°	28.333
<i>rhodesiae</i>		X			BMNH 64.478	M	Zambia	Eastern Province, Missale Old Mine	-14.117°	32.866
<i>rhodesiae</i>		X			BMNH 64.479	M	Zambia	Eastern Province, Missale Old Mine	-14.117°	32.866
<i>rhodesiae</i>		X			BMNH 64.480	F	Zambia	Eastern Province, Missale Old Mine	-14.117°	32.866
<i>rhodesiae</i>		X			BMNH 68.600	M	Zambia	Eastern Province, Missale Old Mine	-14.117°	32.866
<i>rhodesiae</i>		X			NMZB 20079	M	Zambia	Eastern Province, Missale Old Mine	-14.117°	32.866
<i>rhodesiae</i>		X			NMZB 20105	M	Zambia	Eastern Province, Missale Old Mine	-14.117°	32.866
<i>rhodesiae</i>		X			NMZB 20108	F	Zambia	Eastern Province, Missale Old Mine	-14.117°	32.866
<i>rhodesiae</i>		X			NMZB 20181	F	Zambia	Eastern Province, Missale Old Mine	-14.117°	32.866
<i>rhodesiae</i>		X			NMZB 20182	F	Zambia	Eastern Province, Missale Old Mine	-14.117°	32.866
<i>rhodesiae</i>		X			BMNH 55.228		Zanzibar	Unguja Island, Zanzibar North Province, Mangapwani	-5.993°	39.195
<i>rhodesiae</i>		X			BMNH 55.229		Zanzibar	Unguja Island, Zanzibar North Province, Mangapwani	-5.993°	39.195
<i>rhodesiae</i>		X			BMNH 55.230		Zanzibar	Unguja Island, Zanzibar North Province, Mangapwani	-5.993°	39.195
<i>rhodesiae</i>		X			BMNH 55.232		Zanzibar	Unguja Island, Zanzibar North Province, Mangapwani	-5.993°	39.195
<i>rhodesiae</i>		X			BMNH 55.233		Zanzibar	Unguja Island, Zanzibar North Province, Mangapwani	-5.993°	39.195
<i>rhodesiae</i>		X			BMNH 55.234		Zanzibar	Unguja Island, Zanzibar North Province, Mangapwani	-5.993°	39.195
<i>rhodesiae</i>		X			NMZB 60557	M	Zimbabwe	Mashonaland West Province, Chinoyi, Dichwe Forest	-17.000°	30.183
<i>rhodesiae</i>		X			NMZB 62051	M	Zimbabwe	Mashonaland West Province, Chinoyi, Orchid Cave	-17.367°	30.117
<i>rhodesiae</i>		X			NMZB 62053	F	Zimbabwe	Mashonaland West Province, Chinoyi, Orchid Cave	-17.367°	30.117
<i>rhodesiae</i>		X			NMZB 60560		Zimbabwe	Matabeleland North Province, Hwange National Park, Main Camp	-18.733°	26.950
<i>landerii</i>		X			MNHN 2000-871	M	Central African Republic	Cuvette Province, Sangha	-1.130°	16.490
<i>landerii</i>		X			MNHN 2000-872	M	Central African Republic	Cuvette Province, Sangha	-1.130°	16.490
<i>landerii</i>		X			BMNH 1855.12.26.250	F	Equatorial Guinea	Bioko [formerly Fernando Po]	3.620°	8.748
<i>landerii</i>		X			MNHN1973-488		Ethiopia	Nighili	-	-
<i>landerii</i>	X	X	X	X	DM 12593	M	Liberia	Nimba County, Mount Nimba	7.640°	-8.420°
<i>landerii</i>	X	X	X		DM 12622	M	Liberia	Nimba County, Mount Nimba	7.640°	-8.420°
<i>landerii</i>		X			MNHN 1905-84		Mali	Balassientu Kati et Kita		

Table S1. Continued...

Taxon	Mol	TM	GM	Bac	Acc No,	Sex	Country	Locality	Latitude	Longitude
<i>R. landeri</i>		X			MNHN 1913-563a	F	Mauritania	Trarza Province (Region), Boutilimit	17.549°	-14.697°
<i>R. landeri</i>		X			MNHN 1985-910	M	Morocco	Oujda Province, Tazarine, Salle du Zeggel, massif du Béni-Snassen	34.843°	-2.354°
<i>R. landeri</i>		X			MNHN 1985-911	M	Morocco	Oujda Province, Tazarine, Salle du Zeggel, massif du Béni-Snassen	34.843°	-2.354°
<i>R. landeri</i>		X			MNHN 1985-912	M	Morocco	Oujda Province, Tazarine, Salle du Zeggel, massif du Béni-Snassen	34.843°	-2.354°
<i>R. landeri</i>		X			MNHN 1985-913	F	Morocco	Oujda Province, Tazarine, Salle du Zeggel, massif du Béni-Snassen	34.843°	-2.354°
<i>R. landeri</i>		X			MNHN 1985-914	F	Morocco	Oujda Province, Tazarine, Salle du Zeggel, massif du Béni-Snassen	34.843°	-2.354°
<i>R. landeri</i>		X			MNHN 1985-915	F	Morocco	Oujda Province, Tazarine, Salle du Zeggel, massif du Béni-Snassen	34.843°	-2.354°
<i>R. landeri</i>		X			MNHN 1985-916	F	Morocco	Oujda Province, Tazarine, Salle du Zeggel, massif du Béni-Snassen	34.843°	-2.354°
<i>R. landeri</i>		X			MNHN 1985-917	F	Morocco	Oujda Province, Tazarine, Salle du Zeggel, massif du Béni-Snassen	34.843°	-2.354°
<i>R. landeri</i>		X			MNHN 1985-918	F	Morocco	Oujda Province, Tazarine, Salle du Zeggel, massif du Béni-Snassen	34.843°	-2.354°
<i>R. lobatus</i>	X	X	X	X	FMNH 228936	M	Mozambique	Inhambane Province, Chihalatan Cave	-21.671°	34.684°
<i>R. lobatus</i>	X	X	X	X	FMNH 228937	F	Mozambique	Inhambane Province, Chihalatan Cave	-21.671°	34.684°
<i>R. lobatus</i>	X	X	X		FMNH 228938	M	Mozambique	Inhambane Province, Chihalatan Cave	-21.671°	34.684°
<i>R. lobatus</i>	X	X	X		FMNH 228939	M	Mozambique	Inhambane Province, Chihalatan Cave	-21.671°	34.684°
<i>R. lobatus</i>	X	X	X		FMNH 228940	F	Mozambique	Inhambane Province, Chihalatan Cave	-21.671°	34.684°
<i>R. lobatus</i>	X	X	X	X	FMNH 228941	M	Mozambique	Inhambane Province, Chihalatan Cave	-21.671°	34.684°
<i>R. lobatus</i>	X	X	X		FMNH 228947	F	Mozambique	Inhambane Province, Malashane Cave	-21.671°	34.864°
<i>R. lobatus</i>	X	X	X		FMNH 228954	F	Mozambique	Inhambane Province, Malashane Cave	-21.671°	34.864°
<i>R. lobatus</i>	X	X	X		FMNH 228965	F	Mozambique	Inhambane Province, Malashane Cave	-21.671°	34.864°
<i>R. lobatus</i>		X			DM 13894	F	Mozambique	Sofala Province, Gorongosa buffer zone	-19.015°	34.148°
<i>R. lobatus</i>		X	X		DM 13938	U	Mozambique	Sofala Province, Gorongosa buffer zone	-19.015°	34.148°
<i>R. lobatus</i>	X	X			DM 13905	F	Mozambique	Sofala Province, Gorongosa National Park	-18.979°	34.351°
<i>R. lobatus</i>	X	X	X		DM 13916	F	Mozambique	Sofala Province, Gorongosa National Park	-18.981°	34.352°
<i>R. lobatus</i>		X	X		DM 13927	M	Mozambique	Sofala Province, Gorongosa National Park	-18.991°	34.353°
<i>R. lobatus</i>		X	X		DM 13942	M	Mozambique	Sofala Province, Gorongosa National Park	-19.023°	34.181°
<i>R. lobatus</i>		X	X		DM 13943	U	Mozambique	Sofala Province, Gorongosa National Park	-19.023°	34.181°
<i>R. lobatus</i>		X	X		DM 13944	U	Mozambique	Sofala Province, Gorongosa National Park	-18.991°	34.353°
<i>R. lobatus</i>		X	X		DM 14529	M	Mozambique	Sofala Province, Gorongosa National Park	-18.991°	34.353°
<i>R. lobatus</i>	X				DM 14531	M	Mozambique	Sofala Province, Gorongosa National Park	-18.991°	34.353°
<i>R. lobatus</i>		X			DM 14532	F	Mozambique	Sofala Province, Gorongosa National Park	-18.985°	34.353°

Table S1. Continued...

Taxon	Mol	TM	GM	Bac	Acc No,	Sex	Country	Locality	Latitude	Longitude
<i>R. lobatus</i>		X	X	X	TMSA 49117	M	Mozambique	Sofala Province, Gorongosa National Park, Cheringoma Plateau	-18.955°	34.613°
<i>R. lobatus</i>		X			TMSA 49114	F	Mozambique	Sofala Province, Gorongosa National Park, Chitengo Camp	-18.985°	34.352°
<i>R. lobatus</i>		X	X		TMSA 14653	F	Mozambique	Tete Province, Muchene	-15.679°	33.809°
<i>R. lobatus</i>		X	X		TMSA 14655	U	Mozambique	Tete Province, Muchene	-15.679°	33.809°
<i>R. lobatus</i>		X	X		TMSA 14656	F	Mozambique	Tete Province, Muchene	-15.679°	33.809°
<i>R. lobatus</i>		X	X		TMSA 14657	F	Mozambique	Tete Province, Muchene	-15.679°	33.809°
<i>R. lobatus</i>		X	X		TMSA 14663	M	Mozambique	Tete Province, Muchene	-15.679°	33.809°
<i>R. lobatus</i>		X	X		TMSA 14664	F	Mozambique	Tete Province, Muchene	-15.679°	33.809°
<i>R. lobatus</i>		X			ZMB 24922	M	Mozambique	Tete Province, Sena	-17.467°	35.017°
<i>R. lobatus</i>		X			ZMB 24927	F	Mozambique	Tete Province, Sena	-17.467°	35.017°
<i>R. cf. lobatus</i>		X	X		DM 11482	F	Mozambique	Nampula Province, Mount Inago Forest Camp	-15.045°	37.396°
<i>R. cf. lobatus</i>	X	X	X	X	FMNH 228945	M	Mozambique	Inhambane Province, Malashane Cave	-21.671°	34.864°
<i>R. cf. lobatus</i>		X	X	X	DM 8575	M	Mozambique	Cabo Delgado Province , Pemba	-13.006°	40.524°
<i>R. cf. lobatus</i>		X	X		DM 8574	F	Mozambique	Sofala Province, Chinizua Forest	-18.977°	35.052°
<i>R. cf. lobatus</i>		X	X	X	DM 13941	M	Mozambique	Sofala Province, Gorongosa National Park	-19.023°	34.181°
<i>R. cf. lobatus</i>		X	X	X	DM 13945	M	Mozambique	Sofala Province, Gorongosa National Park	-19.023°	34.181°
<i>R. cf. lobatus</i>		X	X	X	TMSA 49115	M	Mozambique	Sofala Province, Gorongosa National Park, Chitengo Camp	-18.985°	34.352°
<i>R. cf. lobatus</i>		X	X	X	TMSA 49118	M	Mozambique	Sofala Province, Gorongosa National Park, Cheringoma Plateau	-18.955°	34.613°
<i>R. simulator</i>		X	X	X	DM 14290	F	R. of South Africa	KwaZulu-Natal Province, Doornhoek Mines, 9.6 km E of Pietermaritzburg	-29.600°	30.518°
<i>R. simulator</i>		X	X		DM 14489	F	R. of South Africa	KwaZulu-Natal Province, Doornhoek Mines, 9.6 km E of Pietermaritzburg	-29.600°	30.518°
<i>R. simulator</i>		X	X		DM 14490	M	R. of South Africa	KwaZulu-Natal Province, Doornhoek Mines, 9.6 km E of Pietermaritzburg	-29.600°	30.518°
<i>R. simulator</i>		X	X		DM 14491	F	R. of South Africa	KwaZulu-Natal Province, Doornhoek Mines, 9.6 km E of Pietermaritzburg	-29.600°	30.518°
<i>R. simulator</i>		X	X		DM 14492	M	R. of South Africa	KwaZulu-Natal Province, Doornhoek Mines, 9.6 km E of Pietermaritzburg	-29.600°	30.518°
<i>R. simulator</i>		X	X		DM 14493	F	R. of South Africa	KwaZulu-Natal Province, Doornhoek Mines, 9.6 km E of Pietermaritzburg	-29.600°	30.518°
<i>R. simulator</i>		X	X		DM 14494	M	R. of South Africa	KwaZulu-Natal Province, Doornhoek Mines, 9.6 km E of Pietermaritzburg	-29.600°	30.518°
<i>R. simulator</i>		X	X	X	DM 14583	M	R. of South Africa	KwaZulu-Natal Province, Doornhoek Mines, 9.6 km E of Pietermaritzburg	-29.600°	30.518°
<i>R. simulator</i>		X	X	X	DM 14584	M	R. of South Africa	KwaZulu-Natal Province, Doornhoek Mines, 9.6 km E of Pietermaritzburg	-29.600°	30.518°
<i>R. simulator</i>				X	DM 6183	M	R. of South Africa	KwaZulu-Natal Province, Pongolapoort Dam Tunnel	-27.419°	32.070°
<i>R. simulator</i>		X	X		DM 14054	F	R. of South Africa	KwaZulu-Natal Province, SAPPI Mooiplaas Plantation, Stanhope Mine	-28.558°	31.165°
<i>R. simulator</i>		X	X	X	DM 14055	M	R. of South Africa	KwaZulu-Natal Province, SAPPI Mooiplaas Plantation, Stanhope Mine	-28.558°	31.165°

Table S1. Continued...

Taxon	Mol	TM	GM	Bac	Acc No,	Sex	Country	Locality	Latitude	Longitude
<i>R. simulator</i>	X	X	X		DM 14153	M	R. of South Africa	KwaZulu-Natal Province, SAPPI Mooiplaas Plantation, Stanhope Mine	-28.558°	31.165°
<i>R. simulator</i>	X	X	X		DM 8353	M	R. of South Africa	KwaZulu-Natal Province, SAPPI Mooiplaas Plantation, Stanhope Mine	-28.558°	31.165°
<i>R. simulator</i>	X	X	X		TMSA 48684	M	R. of South Africa	Limpopo Province, Mahune Cave	-24.115°	30.121°
<i>R. simulator</i>	X	X			TMSA 49113	M	R. of South Africa	Limpopo Province, Mahune Cave	-24.115°	30.121°
<i>R. simulator</i>	X	X			TMSA 48437	F	R. of South Africa	Limpopo Province, Randstephne 455 KQ, Gatkop Cave	-24.618°	27.652°
<i>R. simulator</i>	X	X			TMSA 48438	F	R. of South Africa	Limpopo Province, Randstephne 455 KQ, Gatkop Cave	-24.618°	27.652°
<i>R. simulator</i>	X	X			TMSA 48440	M	R. of South Africa	Limpopo Province, Randstephne 455 KQ, Gatkop Cave	-24.618°	27.652°
<i>R. simulator</i>	X	X			TMSA 48441	M	R. of South Africa	Limpopo Province, Randstephne 455 KQ, Gatkop Cave	-24.618°	27.652°
<i>R. simulator</i>	X	X			TMSA 48442	M	R. of South Africa	Limpopo Province, Randstephne 455 KQ, Gatkop Cave	-24.618°	27.652°
<i>R. simulator</i>	X	X			TMSA 48443	F	R. of South Africa	Limpopo Province, Randstephne 455 KQ, Gatkop Cave	-24.618°	27.652°
<i>R. simulator</i>	X	X			TMSA 45214	F	R. of South Africa	Limpopo Province, Tygerkloof Farm 354, 24 km SW of Thabazimbi	-24.694°	27.209°
<i>R. simulator</i>	X	X			TMSA 45215	M	R. of South Africa	Limpopo Province, Tygerkloof Farm 354, 24 km SW of Thabazimbi	-24.694°	27.209°
<i>R. simulator</i>	X	X			TMSA 45216	M	R. of South Africa	Limpopo Province, Tygerkloof Farm 354, 24 km SW of Thabazimbi	-24.694°	27.209°
<i>R. simulator</i>	X	X			TMSA 45217	M	R. of South Africa	Limpopo Province, Tygerkloof Farm 354, 24 km SW of Thabazimbi	-24.694°	27.209°
<i>R. simulator</i>	X	X			TMSA 45218	M	R. of South Africa	Limpopo Province, Tygerkloof Farm 354, 24 km SW of Thabazimbi	-24.694°	27.209°
<i>R. simulator</i>	X	X			TMSA 45219	F	R. of South Africa	Limpopo Province, Tygerkloof Farm 354, 24 km SW of Thabazimbi	-24.694°	27.209°
<i>R. simulator</i>	X	X			TMSA 45221	F	R. of South Africa	Limpopo Province, Tygerkloof Farm 354, 24 km SW of Thabazimbi	-24.694°	27.209°
<i>R. simulator</i>	X	X			TMSA 47621	M	R. of South Africa	Mpumalanga Province, Ehlazeni District, 9 km SW of Hectorspruit	-25.476°	31.606°
<i>R. simulator</i>	X	X			TMSA 47620	M	R. of South Africa	Mpumalanga Province, Kaalrug	-25.618°	31.538°
<i>R. simulator</i>	X	X			TMSA 47012	F	R. of South Africa	Mpumalanga Province, Waterval Farm, Third Mine Tunnel	-25.870°	30.322°
<i>R. simulator</i>	X	X			DM 9864	F	Swaziland	Lubombo Province, Mbuluzi Nature Reserve	-26.136°	32.001°
<i>R. simulator</i>	X	X			DM 3686	F	Zimbabwe	Manicaland Province, Mutare	-	-
<i>R. simulator</i>			X	X	DM 4623	M	Zimbabwe	Manicaland Province, Mutare	-	-
<i>R. simulator</i>			X	X	DM 4624	M	Zimbabwe	Manicaland Province, Mutare	-	-
<i>R. simulator</i>		X			BMNH 2.2.7.10	M	Zimbabwe	Mashonaland Central Province, Mazowe	-17.504°	30.974°
<i>R. capensis</i>	X				KU531270	F	South Africa	Northwest Province, Wondergat Caves	-28.420°	16.890°
<i>R. capensis</i>	X				KU531271	F	South Africa	Limpopo Province, Pafuri Culverts	-22.420°	31.040°
<i>R. capensis</i>	X				KU531272	M	South Africa	Eastern Cape Province, Table Farm	-33.280°	26.420°
<i>R. capensis</i>	X				KU531273	M	South Africa	Western Cape Province, Zoutpansklipheuwel	-31.630°	18.210°
<i>R. capensis</i>	X				KU531274	M	South Africa	Western Cape Province, Zoutpansklipheuwel	-31.630°	18.210°

Table S1. Continued...

Taxon	Mol	TM	GM	Bac	Acc No,	Sex	Country	Locality	Latitude	Longitude
<i>R. cornotus</i>	X				AB085715	U	-	-	-	-
<i>R. darlingi</i>	X				KF683234	U	-	-	-	-
<i>R. denti</i>	X				KF683249	U	-	-	-	-
<i>R. denti</i>	X				KU531300	M	Namibia	Oshikoto Province, Ghaub Cave	-19.480°	17.780°
<i>R. denti</i>	X				KU531301	F	Namibia	Otjozondjupa Province, Ludwig Cave	-19.400°	16.990°
<i>R. denti</i>	X				KU531303	F	South Africa	Northern Cape Province, Koegelbeen	-28.650°	23.350°
<i>R. denti</i>	X				KU531304	M	South Africa	Northern Cape Province, Posmasburg	-28.300°	23.120°
<i>R. eurayle</i>	X				KF031268	U	-	-	-	-
<i>R. monocerus</i>	X				AF406806	U	-	-	-	-
<i>R. monocerus</i>	X				DQ29758	U	-	-	-	-
<i>R. pumilus</i>	X				AB061526	U	-	-	-	-
<i>R. pusillus</i>	X				EF217382	U	-	-	-	-
<i>R. rhodesiae</i>	X				KF683251	U	South Africa	No locality information	-	-
<i>R. rhodesiae</i>	X				KU531378	M	South Africa	Limpopo Province, Pafuri Culverts	-22.420°	31.040°
<i>R. rhodesiae</i>	X				KU531380	F	South Africa	Limpopo Province, Pafuri Culverts	-22.420°	31.040°
<i>R. rhodesiae</i>	X				KU531382	F	Zambia	Central Province, Kalenda	-14.740°	26.910°
<i>R. rhodesiae</i>	X				KU531384	F	Zambia	Lusaka Province, Shimalala Cave	-15.650°	28.230°
<i>R. rhodesiae</i>	X				KU531387	F	Zimbabwe	Mashonaland Central Province, Dambanzara	-16.830°	31.230°
<i>R. rhodesiae</i>	X				KU531388	F	Zimbabwe	Mashonaland Central Province, Dambanzara	-16.830°	31.230°
<i>R. rhodesiae</i>	X				KU531389	F	Zimbabwe	Mashonaland Central Province, Dambanzara	-16.830°	31.230°
<i>R. rouxii</i>	X				JQ316213	U	-	-	-	-
<i>R. ruwenzori</i>	X				EU436679	U	-	-	-	-
<i>R. simulator</i>	X				KF683250	U	Zimbabwe	No locality information	-	-
<i>R. simulator</i>	X				KU531361	F	Botswana	South-East Province, Lobatse	-25.240°	25.660°
<i>R. simulator</i>	X				KU531362	M	South Africa	Mpumlanga Province, Elandshoek Mine	-25.380°	30.690°
<i>R. simulator</i>	X				KU531363	M	South Africa	Mpumlanga Province, Elandshoek Mine	-25.380°	30.690°
<i>R. simulator</i>	X				KU531364	F	South Africa	Northern Cape Province, Koegelbeen	-28.650°	23.350°
<i>R. simulator</i>	X				KU531365	F	Zambia	Central Province, Kalenda	-14.740°	26.910°
<i>R. simulator</i>	X				KU531366	M	Zambia	Lusaka Province, Shimalala Cave	-15.650°	28.230°
<i>R. simulator</i>	X				KU531367	F	Zimbabwe	Mashonaland West Province, Chikuti	-17.150°	29.960°

Table S1. Continued...

Taxon	Mol	TM	GM	Bac	Acc No,	Sex	Country	Locality	Latitude	Longitude
<i>R. sinicus</i>	X				KX467583	U	-	-	-	-
<i>R. swinnyi</i>	X				KU531373	F	South Africa	Eastern Cape Province, Pirie Forest, Sandile's Cave	-32.720°	27.280°
<i>R. swinnyi</i>	X				KU531375	M	South Africa	Eastern Cape Province, King William's Town	-32.720°	27.280°
<i>R. swinnyi</i>	X				KU531390	U	South Africa	KwaZulu-Natal Province, Kokstad	-30.520°	29.480°
<i>R. swinnyi</i>	X				KU531391	U	South Africa	KwaZulu-Natal Province, Kokstad	-30.520°	29.480°
<i>R. blythii</i>	X				DQ865343	U	South Africa	KwaZulu-Natal Province, Kokstad	-30.520°	29.480°
<i>R. virgo</i>	X				JN106309	U	-	-	-	-

Table S2. Variable loading matrix for PCA of intraspecific variation in two small African *Rhinolophus* species.

	PC 1	PC 2	PC 3
CCL	0.17753	0.15084	0.046297
ZW	0.28981	0.10674	0.19319
M	0.18576	0.046831	0.22869
M3M3	0.31301	0.011963	0.72511
C1M3	0.25388	0.13577	-0.049007
IBC	0.39957	-0.89781	-0.11599
NW	0.60571	0.31485	-0.52355
NL	0.18933	0.17972	0.021765
NH	0.27116	0.046649	-0.099501
BCW	0.22723	0.073628	0.28655

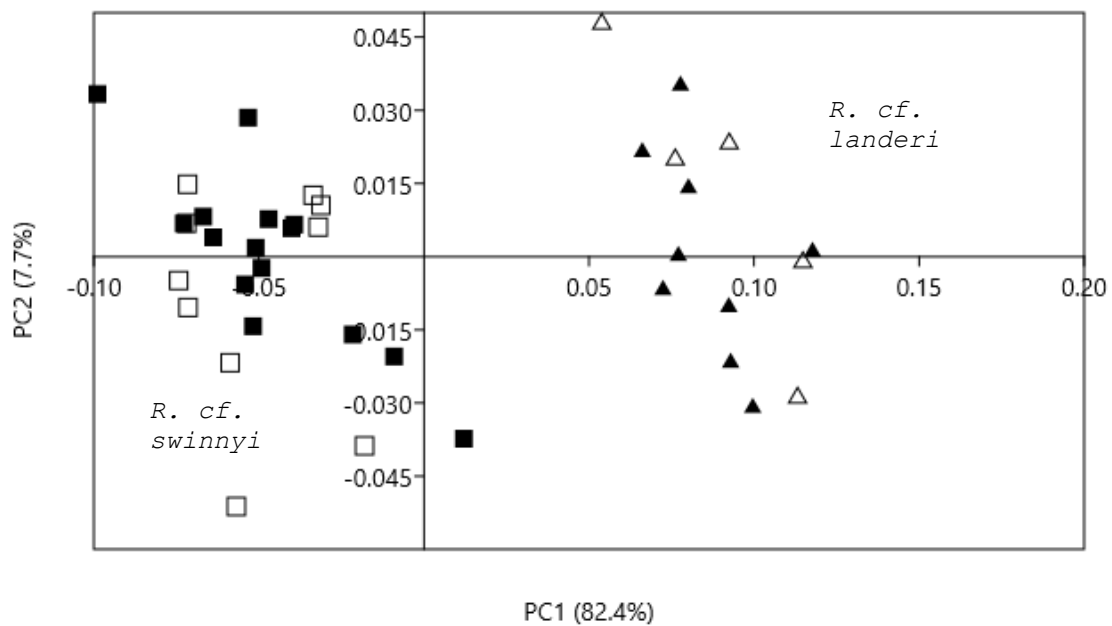


Fig. S1. PCA of 10 log-transformed craniodental variables showing scatter of individuals of both sexes of *R. cf. swinnyi* (squares) and *R. cf. landeri* (triangles) from Chihalatan and Malashane Caves and Muchene District, Mozambique. Filled symbols represent females, open symbols represent males.