

Importance of bovine mastitis in Africa

Thabiso E. Motaung^{a*}, Kiro R. Petrovski^b, Inge-Marie Petzer^c, Oriel Thekiso^d, Toi J. Tsilo^{a,e}

^aAgricultural Research Council - Small Grain Institute. Private Bag X29, Bethlehem 9700, South Africa

^bSchool of Animal and Veterinary Sciences, The University of Adelaide, Roseworthy Campus, JS Davies building G13, Roseworthy 5371, Australia

^cDepartment of Production Animal Studies, Udder Health, Faculty of Veterinary Science, University of Pretoria, Private Bag X04, Onderstepoort 0110, South Africa

^dUnit for Environmental Sciences and Management, North-West University, Private Bag X6001, Potchefstroom 2520, South Africa

^eDepartment of Life and Consumer Sciences, University of South Africa, PO Box 392, Pretoria 0003, South Africa

*Corresponding author

Agricultural Research Council - Small Grain Institute. Private Bag X29, Bethlehem 9700, South Africa

E-mail address: motaung.thabiso.eric@gmail.com

Running tittle: Bovine mastitis in Africa

Abstract

Bovine mastitis is an important animal production disease that affects the dairy industry globally. Studies have estimated the prevalence of this disease in approximately 30% of African countries, with the highest prevalence found in Ethiopia. This is despite the wide cattle distribution in Africa, and the largest number of dairy farms and herds in countries such as South Africa, Kenya and Uganda. Furthermore, the estimated financial losses due to direct and indirect impacts of bovine mastitis are lacking in this continent. Therefore, intensive research efforts will help determine the continent-wide economic impacts and advance careful monitoring of disease prevalence and epidemiology. Here, published cases supporting the occurrence and importance of bovine mastitis in certain regions of Africa are outlined.

Key words: Africa, economic impact, mastitis, milk production, somatic cell count

Introduction

Bovine mastitis places a major economic burden on the dairy industry globally (Bradley, 2002; Wellenberg *et al.*, 2002; Petrovski *et al.*, 2006; Man'ombe, 2012; Carrillo-Casas and Miranda-Morales, 2012), and a major concern for the dairy cattle community in Africa. This disease results due to prokaryotic (bacterial) and eukaryotic (mycotic and algal) species invading the udder tissue and subsequently inflaming the mammary glands (Bradley, 2002). Economic costs associated with bovine mastitis are the result of poor quality and reduced yield of milk (Petrovski *et al.*, 2006; Halasa *et al.*, 2009), that seems to vary with each causative pathogen (Oba, 2005). Direct and indirect losses contribute massively to economic impacts of the disease. Direct losses result from milk wastage due to pathogenic contamination, antimicrobials used for treatment or adulteration in appearance, and treatment expenditure. Oftentimes, indirect losses are not realized by the farmer as they are concealed. Many sources of indirect losses include pre-mature culling, decreased quantity and quality of the harvested milk, expenditure on prevention and health problems associated with the disease and zoonotic potential (Gruet *et al.*, 1999; du Preez *et al.*, 2000; Bradley, 2002; Petrovski *et al.*, 2006).

To date, more than 140 potentially pathogenic species such as bacteria (including *Mycoplasma*), fungi, algae, and viruses cause bovine mastitis (Watts, 1998; Petrovski *et al.*, 2011). This is a big number of species for a single disease and could potentially alter the veterinarians' interpretation and determination of the epidemiology of the disease and resulting economic losses. As such, the infectious pathways of these causative pathogens should be addressed meticulously as some may overlap. Mastitis develops as one of two major types, namely contagious or environmental (Bradley, 2002), both of which severely damage the udder tissue of affected cows. Although

routes and types of infection are universally accepted, etiologies of different pathogens, incidences, prevalence and management of mastitis are yet to be comprehensively documented for most African countries. As a result, costs remain underestimated and difficult to calculate, while existing treatment regimens are supported by limited evidence-based veterinary medicine. Consequently, these pitfalls hinder prevention, detection and treatment of the disease per cow, client and herd, and will ultimately impact negatively on dairy farming profitability.

Dairy production in Africa pales in comparison to the dairy industry in developed countries, such as the United States (US) and countries such as those in the European Union (EU), in terms of licensed herds (USAD, 2010; Lacto data, 2015). However, the average herd size is larger in African countries, including South Africa (USAD, 2010; Lacto data, 2015). Consequently, milk has become an important food commodity in African farming enterprises while its production is a source of income for commercial farmers. For many smaller farms, the dairy industry mainly feeds households because of milk production related labor requirement inputs, and generates income in poor communities. Several factors further influence the vitality of the dairy industry in many African communities. These include milking practices, processing, distribution, skilled human resources and indigenous beliefs, attitudes and values attached to consumption of dairy products including milk. Combined, these factors could influence mastitis management practices and associated policies presently held in Africa. Given this background, this review provides the current understanding of the occurrence and importance of bovine mastitis for the African continent.

The review process

A review of the scientific literature was conducted following standard practices published by O'Connor *et al.* (2014) and Sargeant and O'Connor (2014). Databases and scientific search engines (e.g. African Journals Online, Web of Science, CAB Abstracts, PubMed, Google Scholars, ScieELO and Scopus) were searched for English language peer-reviewed articles, theses and reviews. General key terms, such as “mastitis”, “mastitis pathogen”, “mastitis organism”, “mastitis cost”, “mastitis economics”, “dairy”, “cattle”, “cow” and “bovine”, were used. Terms describing specific forms of mastitis were also used, including “mastitis algae”, “mastitis bacteria”, “mastitis fungus”, “mastitis virus”, “clinical mastitis” and “sub-clinical mastitis”. All search terms were used as major descriptors and combined with search terms “Africa” or “African continent” or specific country names to specify prevalence locations. The search was enriched by doing a manual search in various journals, and was finalized in September 15, 2016. Papers retrieved were screened manually for relevance, focusing on full length articles reporting on mastitis from the African continent and excluding papers with no relevance to Africa. Additionally, reports published before the year 2000 were excluded, and this has limited the review to roughly the past decade and half.

Statistical analyses were conducted as follows. In terms of more than one paper being retrieved, provided that each was presenting data from different localities of a country, data was pooled. When multiple papers retrieved were presenting data from the same region in a country, an average of the data sets was calculated and used in the final analysis. Data for different countries was imported and saved into the StatPlanet data editor (StatSilk, 2012) using indicators “cows sampled”, “disease prevalence”, and “pathogen diversity”. Integrative maps were constructed using StatPlanet version 3.0

(StatSilk, 2012) and an online version of Plotly (<https://plot.ly/plot/>). Statistical data used to measure whole fresh milk production relative to animal trend in Africa was retrieved from the statistics division of the Food and Agriculture Organization of the United Nations (FAOSTAT, 2015).

Milk production in Africa

Milk is an important food and income source in developing countries. In sub-Saharan Africa and Asia, cattle account for about 75% and 50% of total milk produced, respectively. As shown in Fig. 1A, there has been an observable increase in milk producing animals and a concomitant increase in production of whole fresh milk across Africa (FAO, 2015). However, despite an increase in these two entities, analysis based on net milk production yield portrays a disturbing picture for certain African countries (Fig. 1B). For instance, although there has been an increase in the net yield between 2000 and 2013 in Egypt, Kenya and South Africa, other countries including Niger and Zimbabwe have encountered little, if any, gains during this period. Other countries, such as Algeria and Uganda, have experienced a sluggish increase in net milk production yield. A similar trend was observed in Asia, where buffaloes are major producers of milk, between 1999 and 2009 where only India, China and Pakistan experienced gains in milk production (Sharma *et al.*, 2012). Countries including Bangladesh, Nepal and South Korea experienced sluggish gains, while Thailand, Vietnam and Sri Lanka experienced little to no gains (Sharma *et al.*, 2012). These intercontinental milk variations can be attributed to numerous challenges including poor hygiene and/or servicing of malfunctioning milking equipment or milk storage bulk tanks. Lack of awareness among farmers regarding mastitis may also be a common cause. However, subclinical mastitis is an important contributor that is mutual between

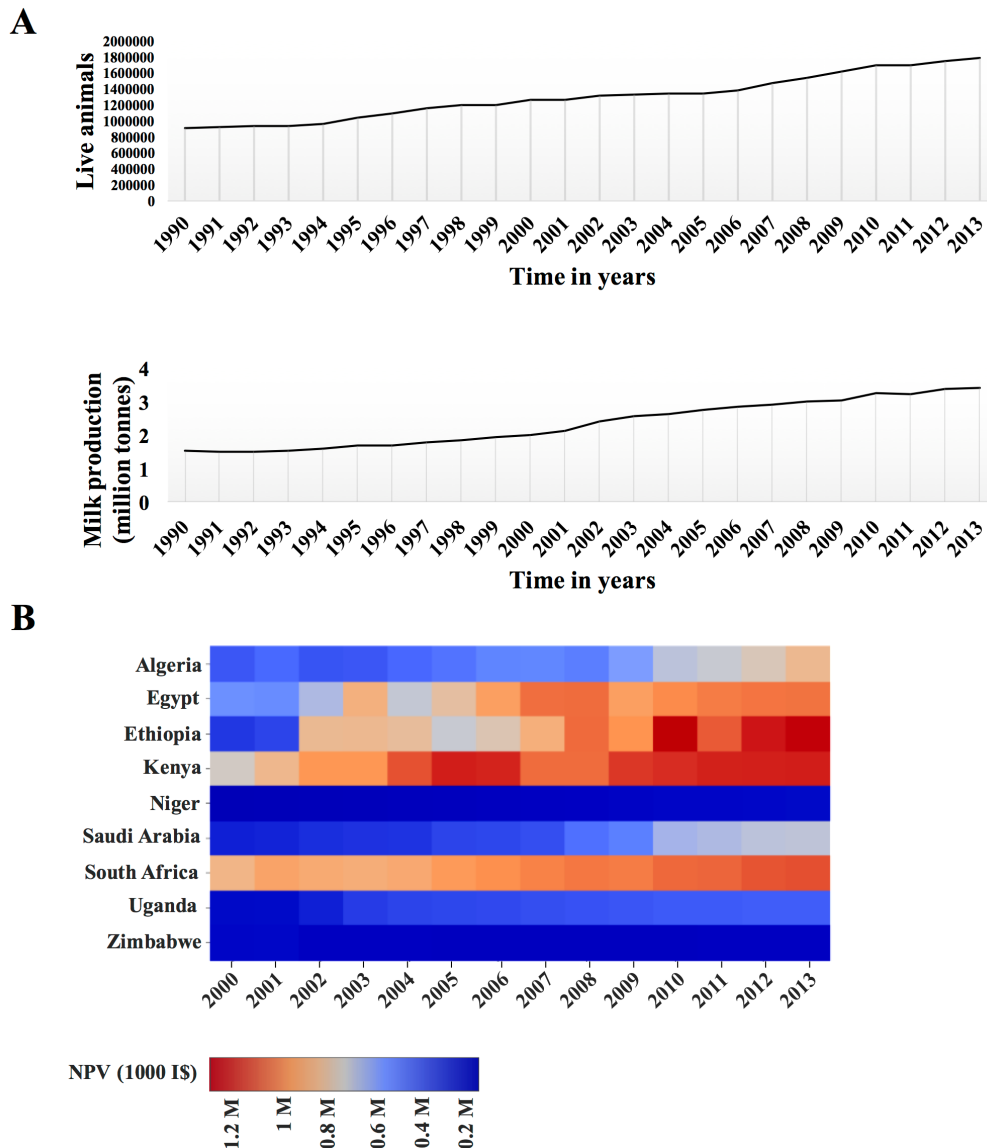


Fig. 1 Whole fresh cow milk production in Africa. **A.** Animal trend determined from number of cows in selected countries (Top) and milk production shared by region (Bottom). **B.** Milk production determined as Net Production Value (NVP) and expressed as international prices or US dollars (\$) derived using a Geary-Khamis formula for the agricultural sector. Source: FAOSTAT (2015).

Asia and Africa, accounting for substantial milk losses. This prompts studying of this disease on a continental scale in order to comprehend its prevalence and end results on milk production systems and the economy. Such analysis will identify severely affected countries in the developing world such as Africa and enable a combined effort to deal with the disease.

Etiologies of bovine mastitis

Clinical and subclinical mastitis is caused by more than 140 different pathogenic bacterial species (including *Mycoplasma*), in addition to fungi, algae, and viruses (Watts, 1998; Petrovski *et al.*, 2011). Understanding the diversity of causative pathogens may help explain how they interact to produce intricate clinical patterns displayed by the disease. Since each country in each continent may have different cattle breeds, follow particular feeding mechanisms and influenced, to some extent, by particular cultural or indigenous beliefs, pathogen diversity may also vary in the different continents such as Africa, at herd, cow and quarter level. Below, a discussion on the etiologies of bovine mastitis and its relevance to the situation in Africa is provided.

Bacterial mastitis

The most common bacterial mastitis pathogens have been identified and classified into two distinct groups – contagious (or host-adapted) and environmental. Contagious mastitis involves introduction of pathogens during milking processes via milking equipment (e.g. malfunctioning pulsation and vacuum controllers) or milkers' hands. Some of the more commonly listed species which exploit this mode of transmission include *Staphylococcus aureus*, *Streptococcus agalactiae*, *Corynebacterium bovis* and *Mycoplasma* spp.

Mycoplasma spp. show some differences in transmission, thus a brief discussion is warranted. Due to lack of a cell wall, *Mycoplasma* spp. can evade antimicrobial treatment that may target and disrupt the cell wall. Moreover, traditional tests rarely include *Mycoplasma* spp. in routine assessments, making cases of diagnosed *Mycoplasma* mastitis to be uncommon. Eventually, this hinders effective and rapid control measures that require early deployment. Such delays and a lack of effective detection system results in unforeseen and substantial economic consequences caused by *Mycoplasma* species. Affiliated species involved in *Mycoplasma* mastitis include, but are not limited to, *M. bovis*, *M. bovis genitalium*, *M. californicum*, *M. canadense* and *M. alkalenscens*. However, *M. bovis* is by far the most commonly isolated pathogen causing *Mycoplasma* mastitis on dairy farms globally. In addition to causing bovine mastitis, *M. bovis* is associated with a range of conditions including arthritis, reproductive (genital disorders) and respiratory diseases (pneumonia) (Pfützner and Sachse, 1996), which may exacerbate or be exacerbated by bovine mastitis. On the other hand, calves regarded as clinically healthy and young cattle tend to harbor *M. bovis* in the respiratory passages. Therefore, they can act as mutual reservoirs for this pathogen and will spread it across the herd, resulting in *Mycoplasma* bovine mastitis occurring at herd level. Transmission is thus facilitated through milk and respiratory mucus of infected cattle (Pfützner and Sachse, 1996).

Mycoplasma mastitis has been largely reported in parts of the US (Fox *et al.*, 2003, 2008; Olde Riekerink *et al.*, 2006; Roy *et al.*, 2008; Punyapornwithaya, 2010), and less frequently reported in developing countries from Asia and Africa (Ghazaei, 2006; Saidi *et al.*, 2013). Therefore, detection of *Mycoplasma* in bovine mastitis cases is deterred for the most part due to the requirement for specialized media and culturing techniques as well as an extended period of growth of more than seven days. The emergence

and spread of *Mycoplasma* mastitis in developed countries suggests that outbreaks in the African countries are possible. But since an effective detection system is lacking in Africa, adverse economic effects will be hard to prevent. Therefore, research and laboratory diagnostics should focus on early detection.

Environmental mastitis is caused by pathogens found in the habitat of the cow, such as soil, plant material, manure, bedding, or a contaminated water source. Frequently, isolated causative pathogens that contribute to environmental bovine mastitis include members of streptococci and gram-negative bacteria, such as *Escherichia coli* and *Klebsiella* (Carrillo-Casas and Miranda-Morales, 2012). Both contagious and environmental mastitis result in subclinical and clinical forms with serious economic implications for the dairy industry in developing countries.

Mycotic mastitis

Fungi such as *Aspergillus fumigatus*, *A. nidulans*, *Candida* spp., *Pichia* spp. And *Trichosporon* spp. are known to cause mycotic mastitis. These fungi have been isolated in various parts of the world affected by mastitis, including Brazil, Poland, New Zealand and Tanzania (Mdegela *et al.*, 2009; Williamson and di Menna, 2007; Wawron *et al.*, 2010; Dworecka-Kaszak *et al.*, 2012). However, mycotic mastitis is poorly characterized given the few studies conducted to characterize fungi in the context of this disease. In contrast, most studies have focused on prokaryotic etiologies, especially staphylococci. As a result, it remains unclear which fungal species is predominantly causing mycotic mastitis. Nonetheless, there is no compelling evidence to suggest that mycotic mastitis may not develop into a costly disease, as is the case with bacterial mastitis, in any part of the world, but may certainly become a farm-specific problem. Since mycoses caused by fungi are common in mammals, such as

humans and other warm blooded animals, the possibility of mycotic mastitis being costly should not be ignored.

Algal mastitis

Members of the algal order, *Prototheca*, cause incurable acute or chronic Protothecal mastitis in dairy cows. Protothecal species, such as *P. zopfii* (genotype 2) and *P. wickerhamii*, have been isolated in numerous clinical cases (Ranjan *et al.*, 2006; Pieper *et al.*, 2012; Sobukawa *et al.*, 2012; Krukowski *et al.*, 2013). Mastitis outbreaks due to several predisposing factors linked to Protothecal bovine mastitis range from animal age, prolonged use of antimicrobials to quarters with a history of clinical mastitis (Ranjan *et al.*, 2006). Environments that are wet and humid tend to harbor *Prototheca* species. These environments include muddy pastures and pens, and the infection can occur when an injured teat is exposed to large pathogen numbers. Cattle immune status also plays a major role in infection establishment (Ranjan *et al.*, 2006). Similar to *Mycoplasma* mastitis, the Protothecal form is rarely reported due to a lack of an effective detection system (Ranjan *et al.*, 2006). Molecular typing tools, such as 18S ribosomal DNA sequencing and restriction fragment length polymorphisms, have been applied in the detection of *Prototheca* cases of bovine mastitis in Brazil (Gonçalves *et al.*, 2015), Canada (Peiper *et al.*, 2012), Italy (Ricchi *et al.*, 2012) and Japan (Osumi *et al.*, 2008). Since data is already available for detection of *Prototheca* in bovine mastitis cases, a guide to identify such related cases in Africa can be formulated.

Viral mastitis

Viruses are isolated from cows affected with bovine mastitis although they are not regarded as common etiological factors. Therefore, these infectious agents should not be dismissed especially since algal, bacteriological and fungal agents do not account

for 100% of mastitis cases. In addition, viruses, such as bovine herpesvirus (BHV), BHV4, foot-and-mouth disease virus and parainfluenza 3, have been associated with clinical bovine mastitis without isolation of bacterial pathogens (Wellenberg *et al.*, 2002), suggesting that viral mastitis may indeed occur. However, the evidence is not sufficient to argue, with great certainty, that viruses are causative agents of bovine mastitis.

Relevance to Africa

To address relevance of mastitis causing pathogens to certain African regions, papers reporting the different pathogenic species isolated from Botswana, Ethiopia, Nigeria, Sudan and Zambia were assessed. These regions show the highest variability in pathogens causing mastitis (>10; Fig. 2A). Kenya and Niger showed between six and seven pathogens, while South Africa, Tanzania, Uganda and Zimbabwe showed fewer than six different pathogens (Fig. 2A). The most commonly reported pathogens were *S. aureus*, *S. agalactiae*, *S. dysgalactiae*, *S. uberis*, and *E. coli.*, while *S. aureus* was the predominant pathogen identified in milk samples from across Africa (Fig. 2B). This mastitic pathogen had the highest prevalence in Kenya (>70%) and lowest prevalence compared to other pathogens in South Africa at less than 10% (Fig. 2B). An early survey examining distribution patterns of mastitis causing pathogens between 1996 and 2007 also reported that *S. aureus* isolates occurred in relatively low numbers (between 10% and 20%) compared to other pathogens in South Africa (Petzer *et al.*, 2009). Several factors, such as climatic conditions, cattle nutrition in feed stocks or movement of cattle between herds, may influence the geographical distribution and dynamics of *S. aureus* and other pathogens. A larger sample size will be more informative in establishing continental prevalence of bovine mastitis and pathogen diversity.

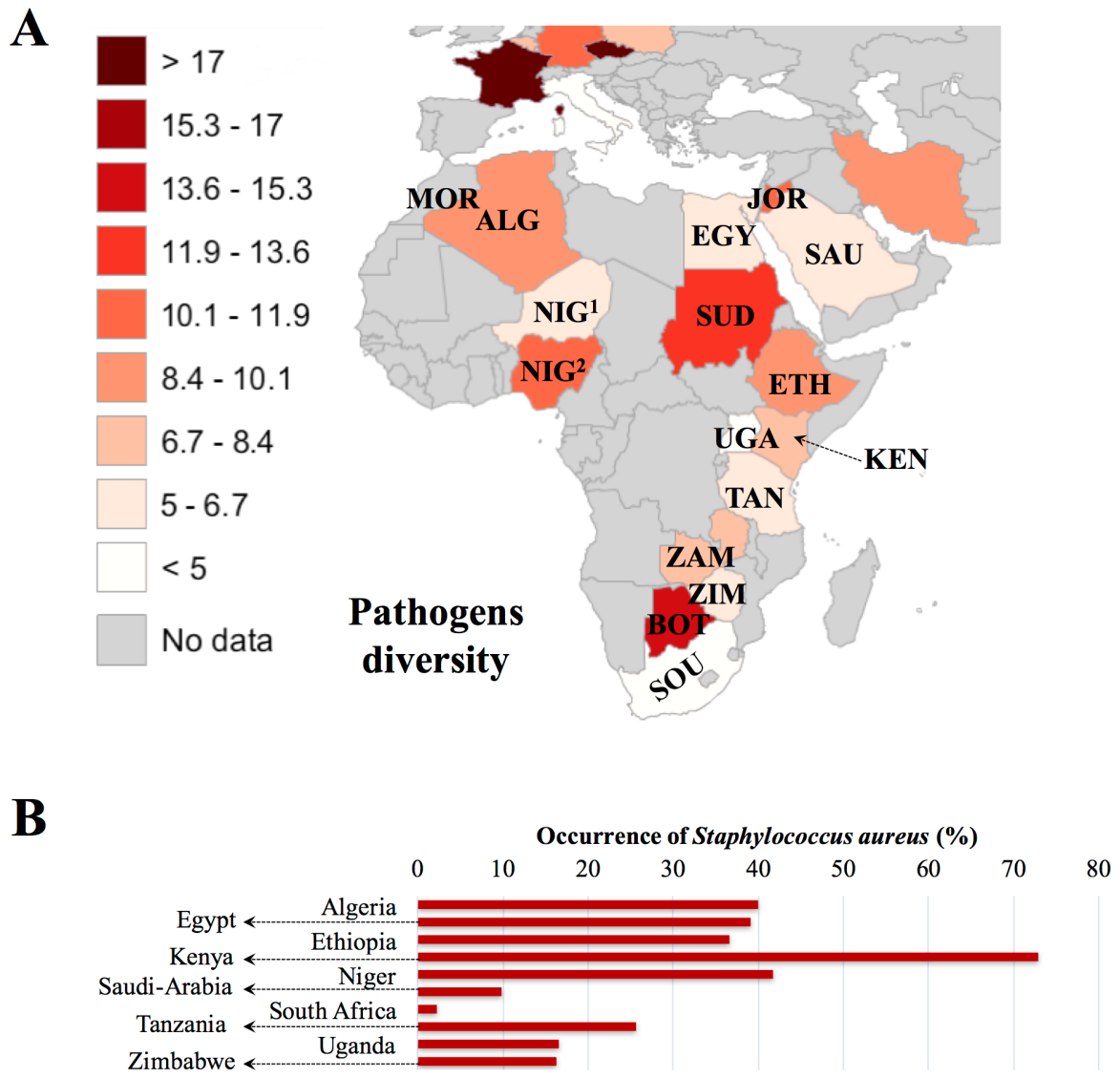


Fig. 2 Continental outlook of causative pathogens in Africa. A. Pathogen diversity. Abbreviations of countries are the same as in Fig. 1. B. Prevalence of *Staphylococcus aureus* in selected African regions.

The influence of bovine mastitis in Africa

Incidence and prevalence of clinical and sub-clinical mastitis has been reported for many regions of the world. Most reports come from developed countries, with some reported by Bradley (2002) and Petrovski *et al.* (2009). Sharma and associates (2012) reviewed the impact of bovine mastitis on Asian cattle and buffaloes. In Africa, occurrence of this disease is well documented in 30% of countries. However, a unified presentation of findings from various studies that is continental for this disease in Africa is needed and will be attempted in this section.

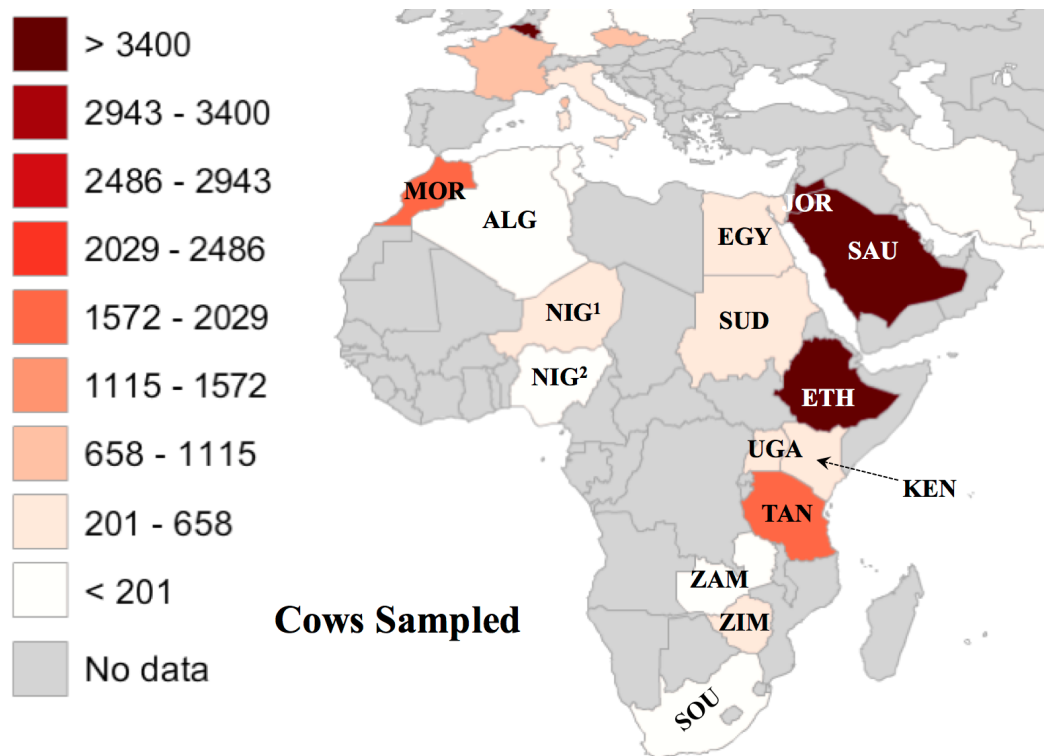
Based on recent reports, released from 2011 to 2014 (Basdew and Laing, 2011; Saidi *et al.*, 2013; Gitau *et al.*, 2014; Kassa *et al.*, 2014), negative effects of bovine mastitis on the African economy could be overwhelming. Therefore, evidence-based intervention is warranted. Data compiled from several reports shows that mastitis is generally of bacterial in nature, with the predominant species being *S. aureus*. A large number of reports were reviewed for this paper to demonstrate overall prevalence of bovine mastitis at the clinical and subclinical level in African bovine herds. Reports published from 2000 to 2014 based on surveys from small and large dairy farms in sub-Saharan Africa, with a few coming from the Middle-East and north Africa (Figure 2-5), suggest that efforts to develop effective and economical methods for disease treatment may be fast-tracked in some regions and less intense in some. To address the extent to which bovine mastitis affected Africa, several aspects such as sample size, reported cases and resultant losses as well as the economic aspects in regions selected based on published reports were analyzed.

Sample size

In general, the Middle-Eastern and north African regions have a large number of sampled animals [Morocco (*circa* 1,700), Jordan (*circa* 16,900) and Saudi Arabia (*circa* 11,200)] compared with other countries (Fadlelmula *et al.*, 2009; Alekish *et al.*, 2013; Boujenane *et al.*, 2015) (Fig. 3). Less than 1,000 cows were surveyed for bovine mastitis in most reports, with Nigeria, Tanzania and Uganda having the lowest number of surveyed animals (≤ 200). The reasons for various sample sizes are most likely multifactorial and can range from poor accessibility to milk samples to extent of the disorder not being recognized. Lack of collaboration between practicing veterinarians holding mastitis data and scientists undertaking surveys may also be a cause of variability in sample size. Whatever the reason for observed variability in available sample size, only a margin of the African continent has been represented with some literature of prevalence and incidence of this disease, suggesting that Africa is progressing at a slower pace, compared to other continents, in surveying the disease.

Reported cases of clinical and subclinical mastitis

Udder health directly and indirectly imposes economic burden on dairy farms worldwide. Although initial impact is usually experienced at farm level, udder health issues may escalate to national and continental scale if not detected and addressed in a timely manner. This requires national monitoring system of mastitis occurrence to ensure treatment measures are sanctioned to reduce financial losses. As is the case for continents such as Asia, in Africa mastitis has been profiled in terms of clinical and subclinical forms, both of which contribute to disease prevalence (Fig. 3A). Notably, all reports evaluated in this review unanimously show that subclinical mastitis is steadily increasing, and this is likely the case in regions for which data is not yet published. Accordingly, countries in which disease prevalence is high, such as Ethiopia, Kenya, South Africa and Uganda, display high prevalence of subclinical



Abbreviations to Countries

ALG – Algeria, BOT – Botswana, EGY – Egypt, ETH – Ethiopia, JOR – Jordan, KEN – Kenya, MOR – Morocco, NIG¹ – Niger, NIG² – Nigeria, SAU – Saudi Arabia, SOU – South Africa, SUD – Sudan, TAN – Tanzania, UGA – Uganda, ZAM – Zambia, ZIM - Zimbabwe

Fig. 3 Integrative map showing sample size used in bovine mastitis. Data compiled from reports published between 2000 and 2015. Abbreviations to country names are the same as in Fig. 2.

mastitis of between 60% and 80% (Fig. 3B). Interestingly, more papers reporting on clinical and subclinical mastitis were published in Ethiopia than in any other sub-Saharan African country (Fig. 4). These reports show that >3,400 cows have been tested for clinical and subclinical mastitis in dairy herds scattered in and around Ethiopia over the past decade or so (Deگو and Tareke, 2003; Sori *et al.*, 2005; Lakew *et al.*, 2009; Abebe *et al.*, 2010; Bitew *et al.*, 2010; Mekibib *et al.*, 2010; Moges *et al.*, 2011; Almaw *et al.*, 2012; Daka *et al.*, 2012; Girma *et al.*, 2012; Haftu *et al.*, 2012; Tadesse and Chanie, 2012; Abera *et al.*, 2013; Belayneh *et al.*, 2013; Yohannis and Molla, 2013; Zeryehun *et al.*, 2013; Benti and Zewdie, 2014; Hailemeskel *et al.*, 2014; Zenebe *et al.*, 2014). This suggests that some African countries have higher prevalence of bovine mastitis than others, and may be more involved in dealing with disease detection, treatment and impacts than other countries.

Although data from reviewed reports reflects information based on one visit per farm for most surveys, a general view of mastitis occurrence can be inferred. For instance, prevalence of subclinical mastitis between 2005 and 2012 was around 40%, while the clinical form was below this number until 2014 (Fig. 4); clinical signs of mastitis are easily detected, thus can be dealt with as soon as they appear. Whether this points to a common factor, such as the time of year (season) when samples were collected or common feeding schemes, remains a matter of speculation and demands further inquiry. Another generalization that can be made is that the occurrence of subclinical mastitis is predominantly higher than clinical mastitis in surveyed areas of Ethiopia, consistent with most parts of Africa (Fig. 3B). Therefore, prevalence of subclinical mastitis in Ethiopia and other African regions may impose substantial costs due to indirect losses (Petrovski *et al.*, 2006; Halasa *et al.*, 2007). To this effect, cumulative

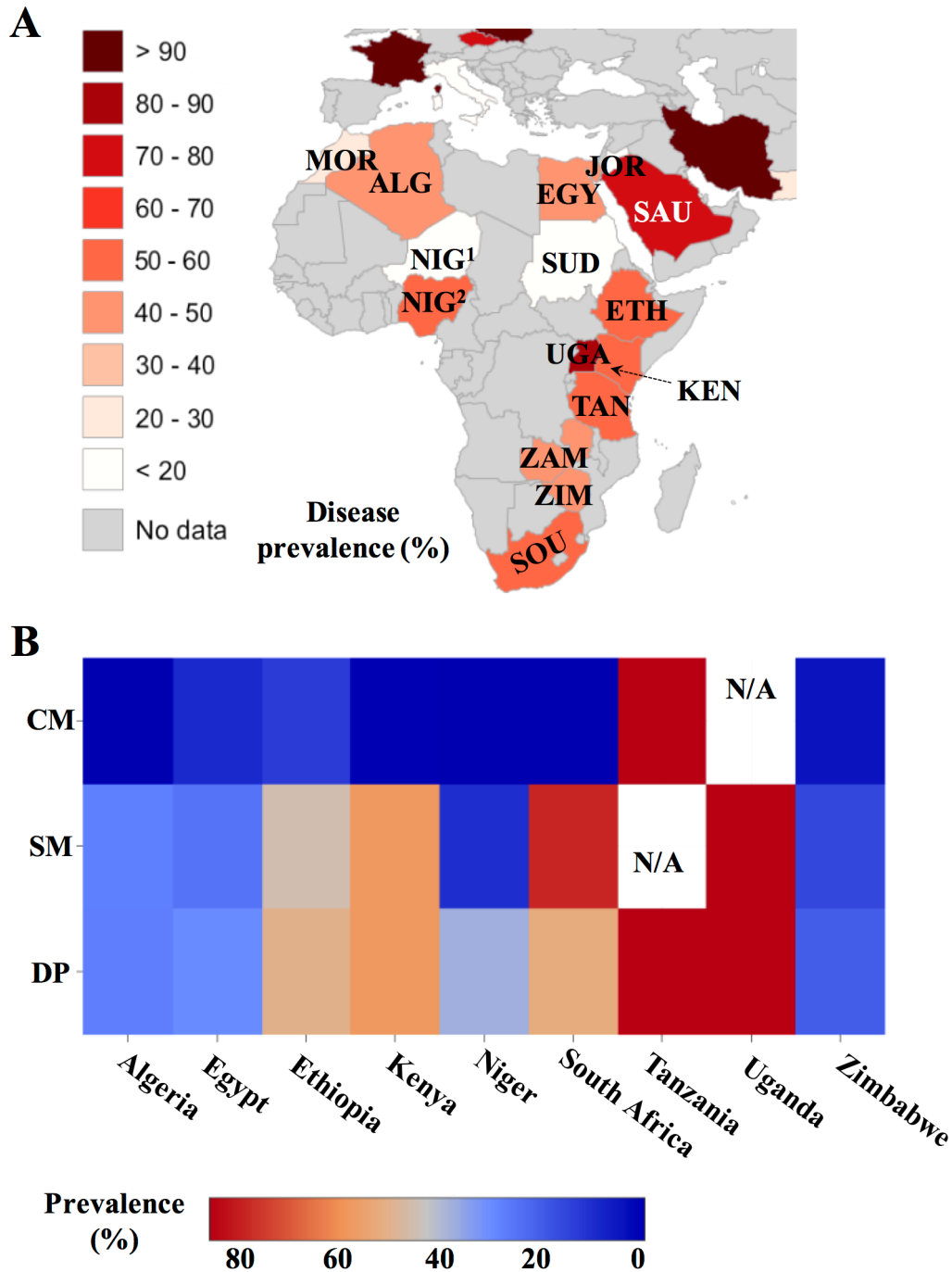


Fig. 4 Continental outlook of bovine mastitis. **A.** Prevalence at cow or quarter level. **B.** Relationship between quarter prevalence (QP), disease prevalence (DP), subclinical mastitis (SM) and clinical mastitis (CM). N/A, data not available. Abbreviations of countries are the same as in Fig. 2.

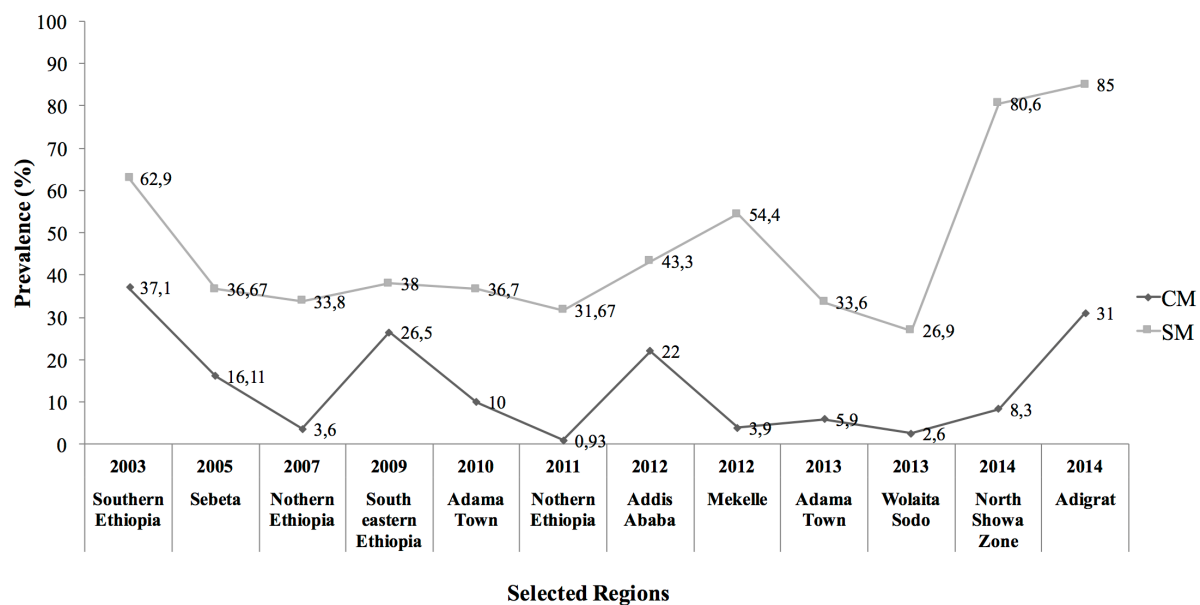


Fig. 5 Mastitis prevalence in selected Ethiopian regions. CM, clinical mastitis; SM, sub-clinical mastitis.

data from Ethiopia can serve to develop a large-scale disease control program for other African countries.

Prevalence at cow or quarter level

Infections that occur at cow's quarters are good indicators of mastitis' prevalence at animal level. This was the baseline to determine mastitis at this level in the African continent. Reports of cows with one or more udder quarters infected with clinical and/or subclinical mastitis for the African continent were gathered and examined. According to these reports, most countries display between 30% and 60% prevalence, with *circa* 30 to 40% infection in Morocco and Ethiopia and less than 13% infection in Niger and Sudan (Fig. 3A). Saudi Arabia, located north of Africa, showed the highest percentage of mastitis infected cows (>70%) from a relatively large sample size (Fadlilmula *et al.*, 2009). Evidence-based information of the prevalence of bovine mastitis in Africa could be maintained by sampling different localities at least twice or three times a year.

Reported losses

Economic losses associated with bovine mastitis in developed countries are well documented. These include annual losses estimated per cow per year in the US and EU countries (Blosser, 1979; Morin *et al.*, 1993; Yalcin, 1999; Costello, 2004; Halasa *et al.*, 2009; Viguier, 2009). In contrast, the economic impact of bovine mastitis in Africa is not well documented due to a lack of published material. Therefore, production losses and expenditure associated with mastitis in Africa and other developing countries are generally underestimated and potentially miscalculated (FAO, 2014). In addition, different countries around the world apply distinct methodologies to calculate economic losses incurred due to mastitis (some examples

Table 1 Estimated costs incurred due to bovine mastitis in selected developing countries (FAO, 2014).

Area	Milk loss (%)	Costs (\$)	Method(s)	Mastitis ^b	Production system ^c	Period
Ethiopia	5.6	38/cow	Production losses due to sub-clinical mastitis per subsystem level	CM and SM	Urban, peri-urban and dairy herds in secondary towns	2005
Madagascar	N/A	188/cow	Financial loss due to CM per cow	CM	Peri-urban	2004
India	17.5	CM = 91 (cows) and 75 (buffaloes); SM = 192 (cows) and 154 (buffaloes)	Milk losses/ animal/ lactation; economic loss due to reduced milk production; Cost of milk discarded due to CM/animal	CM and SM	N/A	1962, 1994

^a“\$”, cost estimates calculated in US dollars

^bCM, clinical mastitis; SM, subclinical mastitis

^cN/A – Not applicable

are indicated in Table 1), and this makes comparison difficult (FAO, 2014). Therefore, to estimate economic impacts of bovine mastitis, a universal method is needed. As far as Africa is concerned, the research landscape for analysis of economic effects associated with bovine mastitis is wide open.

Reported interventions

A recent study conducted in South Africa to evaluate economic value of somatic cell count (SCC) in Holstein and Jersey cattle found that it is imperative for SCC to be incorporated into breeding objectives. A reduction in milk yields caused a concurrent profit reduction ranging from ZAR 491.48 to ZAR 1,795.57 per cow per year, depending on the breed, production and payment system (Banga *et al.*, 2014). To our knowledge, these estimated profit reductions were derived from milk of healthy cows, arguing that reductions are potentially severe in cows with subclinical mastitis. Therefore, information on milk SCC is vital in detecting subclinical mastitis as it may provide reliable estimates of milk production losses.

Mastitis diagnosis

Diagnosis of clinical mastitis is less complex since clinically discernable signs, including swollen quarters/udder and poor milk quality, can be detected by farmers (Mahmmod, 2013). By contrast, subclinical mastitis cannot be visually diagnosed and requires application of diagnostic techniques. The wide range of mastitis causing pathogens can perpetuate the costs of developing treatment, and in some cases, may involve application of diagnostic methods tailored to specific pathogens.

Under field conditions, early detection is often assisted using traditional diagnostic tests, such as the California Mastitis Test (CMT) and/or SCC at herd level (Deb *et al.*, 2013; Duarte *et al.*, 2015). CMT is a simple cow-side indicator test commonly used to

determine SCC for diagnosis of subclinical mastitis. Somatic cells mainly comprise of macrophages, lymphocytes, erythrocytes and epithelial cells (Dohoo and Meek, 1982; Pillai *et al.*, 2001; Sharma *et al.*, 2011) and the proportion of each cell type depends on infection status of the gland. In healthy udders, white blood cells constitute a third of cells, but during infection white blood cells may increase in proportions, reaching 99%. Therefore, SCC can indicate the presence and extent of udder tissue damage caused by pathogenic species or malfunctioning milking equipment and, hence, safeguard milk quality. Consequently, regular examination of somatic cells in milk is recommended for dairy farms, despite the lack of a universal standard that exists for SCC in terms of poor or good milk quality. Additionally, an inverse linear relationship has been defined between low SCC (e.g. <100,000 cells/mL) and high milk quality as well as high SCC (e.g. >200,000 cells/mL) and declining milk quality (Bradley, 2002; Sharma *et al.*, 2011). Such measures should be considered for Africa to timely curb disease consequences.

Other common tests for detection of bovine mastitis include electrical conductivity, pH, NaOH (white side test), measurement of *N*-acetyl-b-D-glucosaminidase, lactate dehydrogenase, bacterial culture of milk, and milk enzyme-linked immunosorbent assay as well as polymerase chain reaction (PCR) assay (Mahmmod, 2013). Several PCR assays, including multiplex PCR and real-time (RT)-PCR, have been developed for detection of mastitic pathogens including *Staphylococcus* spp., *E. coli*, *M. bovis*, *S. agalactiae* and *Enterococcus* spp. (Taponen *et al.*, 2009; Koskinen *et al.*, 2009; Shome *et al.*, 2011; Hiitiö *et al.*, 2015; Barbier *et al.*, 2016). A comprehensive background of the molecular epidemiology of mastitis pathogens, particularly at sub-species level, with relevance to public health is reported by Zadoks *et al.* (2011). The advent of the loop-mediated isothermal amplification method, which is another nucleic acid

amplification technique (Tomita *et al.*, 2008), has seen development of assays for detection of *Staphylococcus* spp., *E. coli*, *M. bovis*, *S. agalactiae* and *Enterococcus* spp. (Kato *et al.*, 2007; Zhang *et al.*, 2011; Wang *et al.*, 2015; Bosward *et al.*, 2016).

Other molecular biological techniques developed for diagnosis of bovine mastitis include proteomics-based detection, biochips and biosensors (Deb *et al.*, 2013). Therefore, an inventory of diagnostic techniques exists, and can be applied as a first line of detection from milk samples in African countries. The challenge is to select a technique(s) with most of desirable qualities (e.g. most reliable, relevant and rapid) to facilitate detection and downstream analyses.

Mastitis treatment

Developing an effective mastitis therapy remains a challenge for researchers due to high number of pathogens contributing to the disease. *S. aureus* is the most prevalent species in bovine mastitis due to resistance mechanisms, such as formation of abscesses within the udder (du Preez, 2000) or evasion of antibiotics by residing inside macrophages, thus avoiding antibiotics circulating in the bloodstream. Moreover, some strains of *S. aureus* can exist as latent bacteria within a capsule and can later reactivate growth when conditions normalize (du Preez, 2000). Furthermore, treatment is complicated by the presence of planktonic and biofilm growth. Evasion of, and resistance to, antibiotics as well as latency have obvious implications for treatment and costs. These factors are important to the success of *S. aureus* as a mastitic pathogen prevailing in Africa.

Currently, there is no universal procedure to treat mastitis. For most treatment campaigns recommended treatment depends on the extent of udder health deterioration (du Preez, 2000). In South Africa, an interesting development is the

exploration of phages as an alternative therapy (Basdew and Laing, 2011; Basdew, 2012). Phages offer a number of benefits as natural therapeutic agents to control bacterial pathogens. These include host specificity, reduced toxicity, ease of isolation and propagation, prolonged shelf life and availability in the same environment as their bacterial hosts. Therefore, problems associated with antimicrobials, such as resistance, cost, and the need to continuously develop antimicrobials in response to their targets, can be eradicated as phages presumably evolve with the target host. However, it is possible that bacteria could develop mechanisms to avoid attack and killing by bacteriophages. Bacteria may secrete enzymes that target phage receptors on cell wall surfaces preventing recognition by, or altering specificity of, phages. As *S. aureus* is the dominant etiological agent in bovine mastitis in Africa, the great potential of bacteriophage therapy is currently being tailored for controlling strains of this species (Basdew and Laing, 2011; Basdew, 2012). Application of phage therapy should be expanded to accommodate other pathogens as antibiotic resistance is not limited to *S. aureus* alone.

Conclusions and future directions

More work is required for reliably diagnosing and treating bovine mastitis, as well as estimating the resulting economic impacts in Africa. Whilst culture-based techniques allow strain isolation from field samples, molecular genetic techniques undoubtedly offer rapid, specific and sensitive detection pipelines for mastitis. Nonetheless, African countries can largely benefit from developing a clear policy regarding diagnosis. Such a policy should emphasize application of rapid techniques as a first line of diagnosis for suspected infections, outbreaks, or be used during routine testing and confirmation at reference centers. As indicated in this paper, prevalence of subclinical mastitis is definitely on the rise in Africa, ranging from 50-80% in Ethiopia, Kenya, South Africa

and Uganda. This is concerning since this form of mastitis leads to increased antimicrobial resistance observed in most mastitis causing pathogens and is by far the damaging and costly form of the disease as early detection is difficult. Thus, this review has highlighted some of the countries severely affected by subclinical mastitis, and should serve as a guide to strengthen subsequent analyses. As subclinical mastitis is common in affected cows and results in elevated SCC, it is recommended that there be clear communication regarding SCCs acceptable for a healthy udder in Africa. This will inform the initiation of treatment for potentially affected cattle. It is also important to address the issue of accuracy when using SCC to detect subclinical mastitis as farmers rely on this information to administer antimicrobials during therapy.

Only about 30% of African countries report cases of bovine mastitis, while ~70% lag behind. This is a small number compared to the developed world. Additionally, estimates of milk losses and costs of dealing with the disease are not well documented, suggesting that there is a delay in devising effective combat strategies. Measures such as increasing collaborations between the dairy industry, scientific community and economists, would result in the better use of limited resources and expertise. It is also advisable that farmers do regular cattle screening for subclinical and clinical signs of mastitis in order to eminently deal with direct and indirect losses.

Acknowledgements

Authors are grateful to L. Mwadzingeni for comments received during preparation of this manuscript. TEM is supported by the National Research Foundation (NRF) of South Africa (Grant no. SFP14070774252). The financial assistance of the NRF is hereby acknowledged. Opinions expressed and conclusions arrived at, are those of the author and not necessarily attributed to the NRF.

References

- Abebe G, Ike AC, Siegmund-Schultze M, Mane-Bielfeldt A and Zarate AV (2010). Prevalence of mastitis and Brucellosis in cattle in Awassa and the peri-urban areas of two smaller towns. *Zoonoses and Public Health* **57**: 367–374.
- Abera B, Lemma D and Iticha I (2013). Study of bovine mastitis in asella government dairy farm of Oromia Regional state, South Eastern Ethiopia. *International Journal of Current Research and Academic Review* **1**: 134–145.
- Alekish MO, Al-Qudah KM and Al-Saleh A (2013). Prevalence of antimicrobial resistance among bacterial pathogens isolated from bovine mastitis in northern Jordan. *Revue De Medecine Veterinaire* **164**: 319–326.
- Almaw G, Molla W and Melaku A (2012). Incidence rate of clinical bovine mastitis in selected Incidence rate of clinical bovine mastitis in selected. *Ethiopian Veterinary Journal* **16**: 93–99.
- Banga C, Nesor F, and Garrick D (2014). The economic value of somatic cell count in South African Holstein and Jersey cattle. *South African Journal of Animal Science* **44**: 174–177.
- Barbier E, Boschioli ML, Gueneau E, Rochelet M, Payne A, de Cruz K, Blieux AL, Fossot C and Hartmann A (2016). First molecular detection of *Mycobacterium bovis* in environmental samples from a French region with endemic bovine tuberculosis. *Journal of Applied Microbiology*. Doi:10.1111/jm.13090.
- Basdew IH (2012). Biological and molecular characterization of South African bacteriophages infective against *Staphylococcus aureus* subsp. *aureus* Rosenbach 1884, causal agent of bovine mastitis. School of Agriculture, Earth

and Environmental Sciences, Faculty of Science and Agriculture, University of KwaZulu-Natal, Republic of South Africa.

Basdew IH, and Laing MD (2011). Biological control of bovine mastitis using bacteriophage therapy. In: A Méndez-Vilas (Eds), Science against microbial pathogens: communicating current research and technological advances. *Formatex* **1**: 386–393.

Belayneh R, Belihu K and Wubete A (2013). Dairy cows mastitis survey in Adama Town, Ethiopia. *Journal of Veterinary Medicine and Animal Health* **5**: 281–287.

Benti AD and Zewdie W (2014). Major reproductive health problems of indigenous Borena cows in Ethiopia. *Journal of Advanced Veterinary Animal Research* **1**: 182–188.

Bitew M, Tafere A and Tolosa T (2010). Study on bovine mastitis in dairy farms of Bahir Dar and environs. *Journal of Animal and Veterinary Advances* **9**: 2112–2917.

Blosser TH (1979). Economic losses from, the national research programme on, mastitis in the United States. *Journal of Dairy Science* **62**: 119–127.

Bosward KL, House JK, Deveridge A, Mathews K and Sheehy PA (2016). Development of loop-mediated isothermal amplification assay for the detection of *Streptococcus agalactiae*. *Journal of Dairy Science* **99**: 2142–2150.

Bradley AJ (2002). Bovine mastitis: An evolving disease. *The Veterinary Journal* **164**: 116–128.

Carrillo-Casas EM and Miranda-Morales RE (2012). Bovine mastitis pathogens: Prevalence and effects on somatic cell count. In: N Chaiyabutr, Milk Production

- Milk production—an up to-date overview of animal nutrition, management and health. *INTECH, New York*. **2012**: 359–74.
- Costello S (2004). Consultant guide to economics of mastitis. [Available online at www.smartstock-usa.com]. Accessed on 20 June 2016.
- Daka D, G/silassie S and Yihdego D (2012). Antibiotic-resistance *Staphylococcus aureus* isolated from cow's milk in the Hawassa area, South Ethiopia. *Annals of Clinical Microbiology and Antimicrobials* **11**: 1.
- Deb R, Kumar A, Chakraborty S, Verma AK, Tiwari R, Dhama K, Singh U and Kumar S (2013). Trends in diagnosis and control of bovine mastitis: A review. *Pakistan Journal of Biological Sciences* **16**: 1653–1661.
- Dego OK and Tareke F (2003). Bovine mastitis in selected areas of Southern Ethiopia. *Tropical Animal Health and Production* **35**: 197–205.
- Dhanda MR and Sethi MS (1962). Investigation of mastitis in India. *Indian Council of Agricultural Research* 1962.
- Dohoo I and Meek A (1982). Somatic cell counts in bovine milk. *Canadian Veterinary Journal* **23**: 119–125.
- du Preez JH (2000). Bovine mastitis therapy and why it fails. *Journal of the South African Veterinary Association* **71**: 201–208.
- Duarte CM, Freitas PP and Bexiga R (2015). Technological advances in bovine mastitis diagnosis: an overview. *Journal of Veterinary Diagnostic Investigation* **27**: 665–672.

- Dworecka-Kaszak B, Krutkiewicz A, Szopa D, Kleczkowski M and Bieganska M. (2012). High prevalence of *Candida* yeast in milk samples from cows suffering from mastitis in Poland. *The Scientific World Journal* 2012.
- Fadlelmula A, Dughaym AM, Mohamed GE, Deib MK and Zubaidy AJ (2009). Bovine Mastitis: Epidemiological, clinical and etiological study in a Saudi Arabian large dairy farm . *Bulgarian Journal of Veterinary Medicine* **12**: 199–206.
- FAO (2014). Impact of mastitis in small scale dairy production systems. Animal Production and Health Working Paper 13, Rome. [Available online at www.fao.org/3/a-i3377e]. Accessed on 20 June 2016.
- FAO (2015). [Available online at <http://www.fao.org/>]. Accessed on 20 June 2016.
- FAOSTAT (2015). FAOSTAT online database [Available online at http://faostat3.fao.org/download/Q/*/E]. Accessed on 20 June 2016.
- Fox LK, Hancock DD, Mickelson A and Britten A (2003). Bulk tank milk analysis: Factors associated with appearance of *Mycoplasma* sp. in milk. *Journal of Veterinary Medicine B, Infectious diseases and Veterinary Public Health* **50**: 235–240.
- Fox LK, Muller FJ, Wedam ML, Schneider CS and Biddle MK (2008). Clinical *Mycoplasma bovis* mastitis in prepubertal heifers on 2 dairy herds. *Canadian Veterinary Journal* **49**: 1110–1112.
- Ghazaei C (2006). Mycoplasmal mastitis in dairy cows in the Moghan region of Ardabil State, Iran. *Journal of the South African Veterinary Association* **77**: 222–223.

- Girma S, Mammo A, Bogele K, Sori T, Tadesse F and Jibat T (2012). Study on prevalence of bovine mastitis and its major causative agents in West Harerghe zone, Doba district, Ethiopia. *Journal of Veterinary Medicine and Animal Health* **4**: 116–123.
- Gitau GK, Bundi RM, Vanleeuwen J and Mulei CM (2014). Mastitogenic bacteria isolated from dairy cows in Kenya and their antimicrobial sensitivity. *Journal of the South African Veterinary Association* **85**: 01–08.
- Gonçalves JL, Lee SHI, de Paula Arruda E, Galles DP, Caetano VC, de Oliveira CAF, Fernandes AM and dos Santos MV (2015). Biofilm-producing ability and efficiency of sanitizing agents against *Prototheca zopfii* isolates from bovine subclinical mastitis. *Journal of Dairy Science* **98**: 3613–3621.
- Gruet P, Maincent P, Berthelot X and Kaltsatos V (2001). Bovine mastitis and intramammary drug delivery: review and perspectives. *Advanced Drug Delivery Reviews* **50**: 245–259.
- Haftu R, Taddele H, Gugsu G and Kalayou S (2012). Prevalence, bacterial causes, and antimicrobial susceptibility profile of mastitis isolates from cows in large-scale dairy farms of Northern Ethiopia. *Tropical Animal Health Production* **44**: 1765–1771.
- Hailemeskel D, Admasu P and Alemu F (2014). Prevalence and identification of bacterial pathogens causing bovine mastitis from crossbred of dairy cows in North Showa zone of Ethiopia. *Global Veterinaria* **13**: 189–195.
- Halasa T, Huijps K, Østerås O and Hogeveen H (2007). Economic effects of bovine mastitis and mastitis management: a review. *Veterinary Quarterly* **29**: 18–31.

- Halasa T, Nielen M, Roos APW, Van Hoorne R, de Jong G, Lam TJGM, van Werven T and Hogeveen H (2009). Production loss due to new subclinical mastitis in Dutch dairy cows estimated with a test-day model. *Journal of Dairy Science* **92**: 599–606.
- Hiitiö H, Riva R, Autio T, Pohjanvirta T, Holopainen J, Pyörälä S and Pelkonen S (2015). Performance of a real-time PCR assay in routine bovine mastitis diagnostics compared with in-depth conventional culture. *Journal of Dairy Research* **82**: 200–208.
- Kassa F, Ayano AA, Abera M and Kiros A (2014). Longitudinal study of bovine mastitis in Hawassa and Wendo Genet small holder dairy farms. *Global Journal of Science Frontier Research: D Agriculture and Veterinary* **14**: 34–41.
- Kato H, Yoshida A, Ansai T, Watari H, Notomi T and Takehara T (2007). Loop-mediated isothermal amplification method for the rapid detection of *Enterococcus faecalis* in infected root canals. *Oral Microbiology and Immunology* **22**: 131–135.
- Koskinen MT, Holopainen J, Pyorala S, Bredbacka P, Pitkala A, Barkema HW, Bexiga R, Roberson J, Solverod L, Piccinini R, Kelton D, Lehmusto H, Niskala S and Salmikivi L (2009). Analytical specificity and sensitivity of a real-time polymerase chain reaction assay for identification of bovine mastitis pathogens. *Journal of Dairy Science* **92**: 952–959.
- Krukowski H, Lisowski A, Nowakowicz-Dębek B and Wlazło Ł (2013). Susceptibility of *Prototheca zopfii* strains isolated from cows with mastitis to chlorhexidine and iodine. *Turkish Journal of Veterinary and Animal Sciences* **37**: 106–108.

- Lacto Data (2015). A milk SA publication compiled by the Milk Producer's Organization. 18: 1.
- Lakew M and Tolosa T, Tigre W (2009). Prevalence and major bacterial causes of bovine mastitis in Asella, South Eastern Ethiopia. *Tropical Animal Health and Production* **41**: 1525–1530.
- Mahmmod Y (2013). The future of PCR technologies in diagnosis of bovine mastitis pathogens. *Advances in Dairy Research* **2**: e106.
- Man'ombe E (2014). Economic value and genetic prediction of clinical mastitis in South African holstein cattle. Thesis, Department of Animal Sciences, Stellenbosch University. [Available online at <https://scholar.sun.ac.za/>]. Accessed on 20 June 2016.
- Mdegela RH, Ryoba R, Karimuribo ED, Phiri EJ, Løken T, Reksen O, Mtengeti E and Urio NA (2009). Prevalence of clinical and subclinical mastitis and quality of milk in smallholder dairy farms in Tanzania. *Journal of the South African Veterinary Association* **80**: 163–168.
- Mekibib B, Furgasa M, Abunna F, Megersa B and Regassa A (2010). Bovine Mastitis: Prevalence, risk factors and major pathogens in dairy farms of Holeta Town, central Ethiopia. *Veterinary World* **3**: 97–403.
- Moges N, Asfaw Y and Belihu K (2011). A cross sectional study on the prevalence of sub clinical mastitis and associated risk factors in and around Gondar, Northern Ethiopia. *International Journal of Animal and Veterinary Advances* **3**: 455–459.

- Morin DE, Petersen GC, Whitmore HL, Hungerford LL and Hinton RA (1993). Economic analysis of a mastitis monitoring and control program in four dairy herds. *Journal of the American Veterinary Medical Association* **202**: 540–548
- Mungube EO, Tenhagen BA, Regassa F, Kyule MN, Shiferaw Y, Kassa T and Baumann MPO (2005). Reduced milk production in udder quarters with sub-clinical mastitis and associated economic losses in crossbred dairy cows in Ethiopia. *Tropical Animal Health and Production* **37**: 503–512.
- O'Connor AM, Anderson KM, Goodell CK and Sargeant JM (2014). Conducting systematic reviews of intervention questions I: writing the review protocol, formulating the question and searching the literature. *Zoonoses and Public Health* **61** (suppl. 1): 28–38.
- Oba M (2005). Milk loss varies with mastitis pathogen. *Western Dairy Digest, Winter 2005*.
- Osumi T, Kishimoto Y, Kano R, Maruyama H, Onozaki M, Makimura K, Ito T, Matsubara K and Hasegawa A (2008). *Prototheca zopfii* genotypes isolated from cow barns and bovine mastitis in Japan. *Veterinary Microbiology* **131**: 419–423.
- Petrovski K, Heuer C, Parkinson T and Williamson N (2009). The incidence and aetiology of clinical bovine mastitis on 14 farms in Northland, New Zealand. *New Zealand Veterinary Journal* **57**: 109–115.
- Petrovski KR, Trajcev M and Buneski G (2006). A review of the factors affecting the costs of bovine mastitis. *Journal of the South African Veterinary Association* **77**: 52–60.

- Petrovski KR, Williamson NB, Lopez-Villalobos N, Parkinson TJ and Tucker IG (2011). Culture results from milk samples submitted to veterinary diagnostic laboratories from August 2003 to December 2006 in New Zealand. *New Zealand Veterinary Journal* **59**: 317–322.
- Petzer I-M, Karzis J, Watermeyer JC, van der Schans TJ and van Reenen R (2009). Trends in udder health and emerging mastitogenic pathogens in South African dairy herds. *Journal of the South African Veterinary Association* **80**: 17–22.
- Pfützner H and Sachse K (1996). *Mycoplasma bovis* as an agent of mastitis, pneumonia, arthritis and genital disorders in cattle. *Revue Scientifique et Technique Del'office Internaional Des Epizooties* **15**: 1477–1494.
- Pieper L, Godkin A, Roesler U, Polleichtner A, Slavic D, Leslie KE and Kelton DF (2012). Herd characteristics and cow-level factors associated with *Prototheca* mastitis on dairy farms in Ontario, Canada. *Journal of Dairy Science* **95**: 5635–5644.
- Pillai S, Kunze E, Sordillo L and Jayarao B (2001). Application of differential inflammatory cell count as a tool to monitor udder health. *Journal of Dairy Science* **84**: 1413–1420.
- Plotly. Online chart maker for excel and csv data. [Available online at <https://plot.ly/plot/>]. Accessed on 20 June 2016.
- Punyapornwithaya V, Fox LK, Hancock DD, Gay JM and Alldredge JR (2012). Time to clearance of mycoplasma mastitis: The effect of management factors including milking time hygiene and preferential culling. *Canadian Veterinary Journal* **53**: 1119–1122.

- Ranjan R, Swarup D, Patra RC and Nandi D (2006). Bovine protothecal mastitis: a review. *CAB Reviews: Perspectives in Agriculture, Veterinary Science, Nutrition and Natural Resources* 1, No. 017.
- Ravaomanana J, Rasambainarivo JH, Perrot A, Razafiarison O and Rakotonindra S (2004). Mastitis in dairy cows and its economic impact on smallholder production in the highland zones of Madagascar. pp. 94–95, In: Proceedings of the 11th International Conference of the Association of Institutions for Tropical Veterinary Medicine, and the 16th Veterinary Association of Malaysia Congress 23–27 August 2004.
- Ricchi M, Goretti M, Branda E, Cammi G, Garbarino CA, Turchetti B, Moroni P, Arrigoni N and Buzzini P (2010). Molecular characterization of *Prototheca* strains isolated from Italian dairy herds. *Journal of Dairy Science* **93**: 4625–4631.
- Riekerink RGMO, Barkema HW, Veenstra S, Poole DE, Dingwell RT and Keefe GP (2006). Prevalence of contagious mastitis pathogens in bulk tank milk in Prince Edward Island. *Canadian Veterinary Journal* **47**: 567–572.
- Roy JP, Francoz D and Labrecque O (2008). Mastitis in a 7-week-old calf caused by *Mycoplasma bovis*. *Veterinary Journal* **176**: 403–404.
- Saidi R, Khelef D and Kaidi R (2013). Subclinical mastitis in cattle in Algeria: Frequency of occurrence and bacteriological isolates. *Journal of the South African Veterinary Association* **84**: 00–00.

- Sargeant JM and O'Connor AM (2014b). Introduction to systematic reviews in animal agriculture and veterinary medicine. *Zoonoses and Public Health* **61** (suppl. 1): 3–9.
- Sharma N, Rho GJ, Hong YH, Kang TY, Lee HK, Hur T.-Y., and Jeong DK (2012). Bovine mastitis: An Asian perspective. *Asian Journal of Animal and Veterinary Advances* **7**: 454–476.
- Sharma N, Singh NK and Bhadwal MS (2011). Relationship of somatic cell count and mastitis: An overview. *Asian-Australasian Journal of Animal Sciences* **24**: 429–438.
- Shome BR, Das Mitra S, Bhuvana M, Krithiga N, Velu D, Shome R, Isloor S, Barbuddhe SB and Rahman H (2011). Multiplex PCR assay for species identification of bovine mastitis pathogens. *Journal of Applied Microbiology* **111**: 1349–1356.
- Singh PJ and Singh KB (1994). A study of economic losses due to mastitis in India. *Indian Journal of Dairy Science* **47**: 265–272.
- Sobukawa H, Yamaguchi S, Kano R, Ito T, Suzuki K, Onozaki M, Hasegawa A and Kamata H (2012). Molecular typing of *Prototheca zopfii* from bovine mastitis in Japan. *Journa of Dairy Science* **95**: 4442–4446.
- Sori H, Zerihun A and Abdicho S (2005). Dairy cattle mastitis in and Around Sebeta, Ethiopia. *Journal of Applied Research in Veterinary Medicine* **3**: 332–338.
- StatSilk (2012). StatPlanet: Interactive data visualization and mapping software. <http://www.statsilk.com>.

- Tadesse A and Chanie M (2012). Study on the occurrence of bovine mastitis in Addis Ababa dairy farms and associated risk factors. *Advances in Biological Research* **6**: 151–158.
- Taponen S, Salmikivi L, Simojoki H, Koskinen MT and Pyörälä S (2009). Real-time polymerase chain reaction-based identification of bacteria in milk samples from bovine clinical mastitis with no growth in conventional culturing. *Journal of Dairy Science* **92**: 2610–2617.
- Tomita N, Mori Y, Kanda H and Notomi T (2008). Loop-mediated isothermal amplification (LAMP) of gene sequences and simple visual detection of products. *Nature Protocols* **3**: 877– 882.
- USAD (2010). United States of America dairy industry. IUF Dairy Industry Research. [Available online at usda.mannlib.cornell.edu]. Accessed on 20 June 2016.
- Viguiet C, Arora S, Gilmartin N, Welbeck N and O’Kennedy R (2009). Mastitis detection: current trends and future perspectives. *Trends in Biotechnology* **27**: 486–493.
- Wang D, Wang Y, Xiao F, Guo W, Zhang Y, Wang A and Liu Y (2015). A comparison of in-house real-time LAMP assays with a commercial assay for the detection of pathogenic bacteria. *Molecules* **20**: 9487–9495.
- Watts JL (1988). Etiological agents of bovine mastitis. *Veterinary Microbiology* **16**: 41–66.
- Wawron W, Bochniarz M and Piech T (2010). Yeast mastitis in dairy cows in the middle-eastern part of Poland. *Bulletin-Veterinary Institute in Pulawy* **54**: 201–204.

- Wellenberga G, Poelb WV and Oirschot JV (2002). Viral infections and bovine mastitis: a review. *Veterinary Microbiology* **88**: 27–45.
- Williamson J, and di Menna ME (2007). Fungi isolated from bovine udders, and their possible sources. *New Zealand Veterinary Journal* **55**: 188–190.
- Yalcin C, Stott AW, Logue DN and Gunn J (1999). The economic impact of mastitis-control procedures used in Scottish dairy herds with high bulk-tank somatic-cell counts. *Preventive Veterinary Medicine* **41**: 135–149.
- Yohannis M and Molla W (2013). Prevalence, risk factors and major bacterial causes of bovine mastitis in and around Wolaita Sodo, Southern Ethiopia. *African Journal of Microbiology Research* **7**: 5400–5405.
- Zadoks RN, Middleton JR, McDougall S, Katholm J and Schukken YH (2011). Molecular epidemiology of mastitis pathogens of dairy cattle and comparative relevance to humans. *Journal of Mammary Gland and Neoplasia* **16**: 357–372.
- Zenebe N, Habtamu T and Endale B (2014). Study on bovine mastitis and associated risk factors in Adigrat, Northern Ethiopia. *African Journal of Microbiology Research* **8**: 327–331.
- Zeryehun T, Aya T and Bayecha R (2013). Study on prevalence, bacterial pathogens and associated risk factors of bovine mastitis in small holder dairy farms in and around Addis Ababa, Ethiopia. *Journal of Animal and Plant Science* **23**: 50–55.
- Zhang J, ZHnag GH, Yang L, Huang R, Zhang Y, Jia K, Yuan W and Li SJ (2011). Development of a loop-mediated isothermal amplification assay for the detection of *Mycobacterium bovis*. *Veterinary Journal* **187**: 393–396.