

Table S3 Diversity metrics

Community	Habitat	Richness	Shannon	Inverse Simpson
Cyanobacteria	Rainfall-dominated	47.25 ^a	2.60 ^a	8.53 ^a
	Fog-dominated	45.83 ^a	1.93 ^b	4.54 ^b
Heterotrophic bacteria	Rainfall-dominated	332.81 ^a	4.65 ^a	43.74 ^a
	Fog-dominated	198.00 ^b	3.79 ^b	23.08 ^a
Metazoa	Rainfall-dominated	20.58 ^a	2.05 ^a	6.02 ^a
	Fog-dominated	12.33 ^b	1.43 ^b	3.35 ^b
Protista	Rainfall-dominated	17.33 ^a	2.08 ^a	5.74 ^a
	Fog-dominated	13.92 ^a	1.94 ^a	5.33 ^a

Different superscript letters indicate a significant mean difference between habitats (Kruskall-Wallis test, $P < 0.01$)

Figure S1a

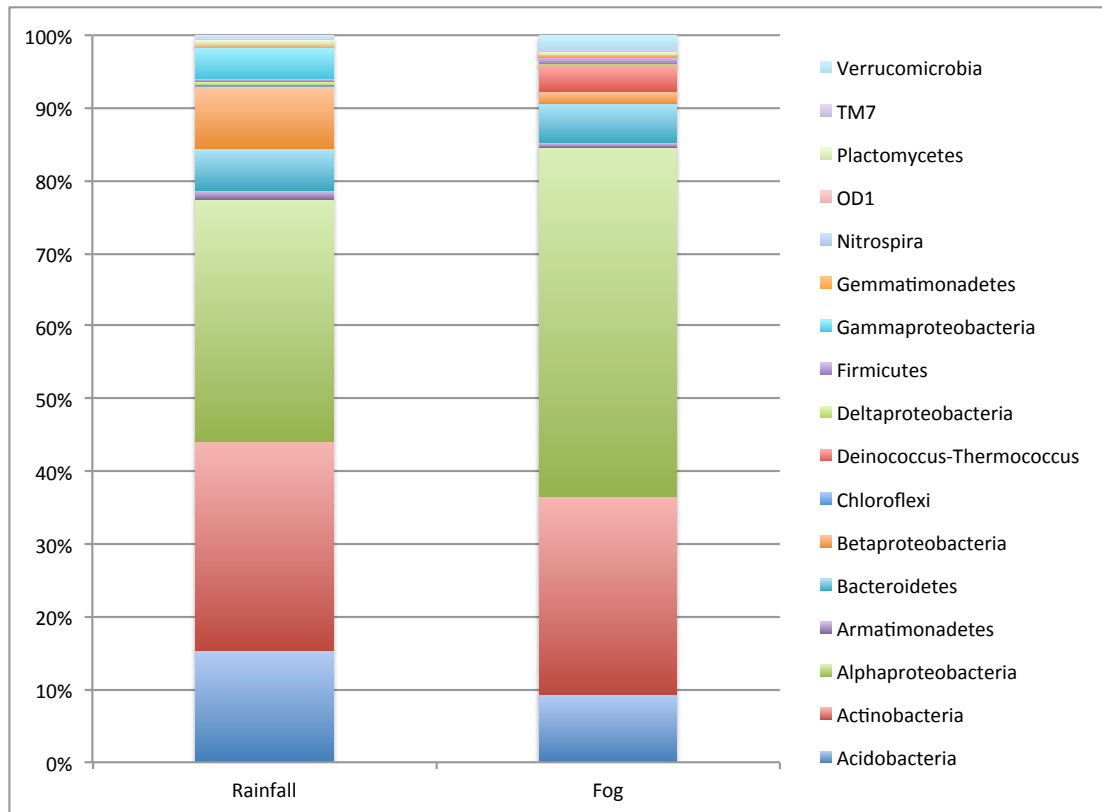


Figure S1b

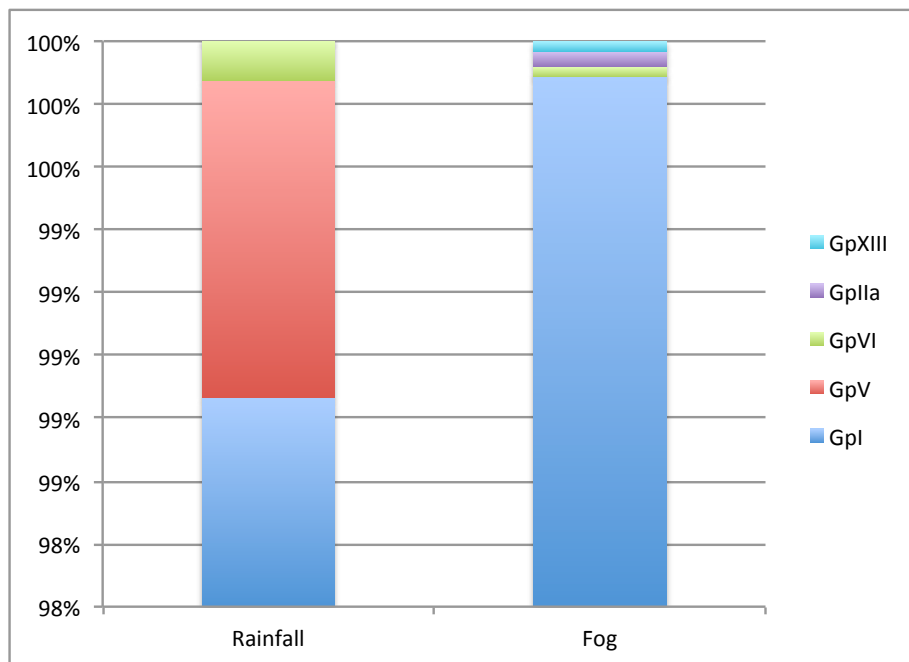
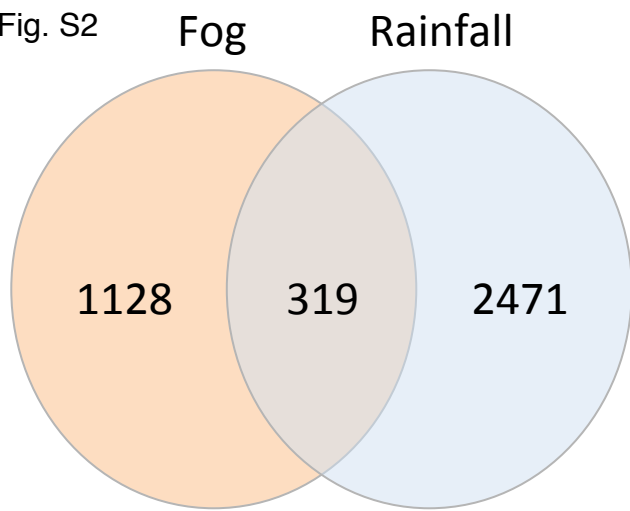
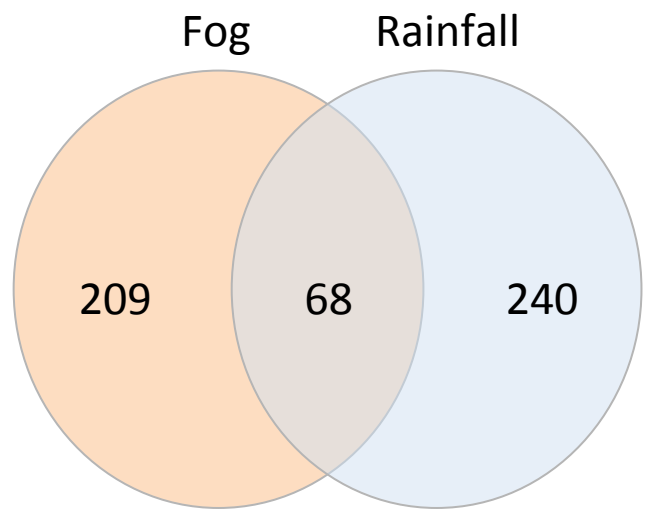


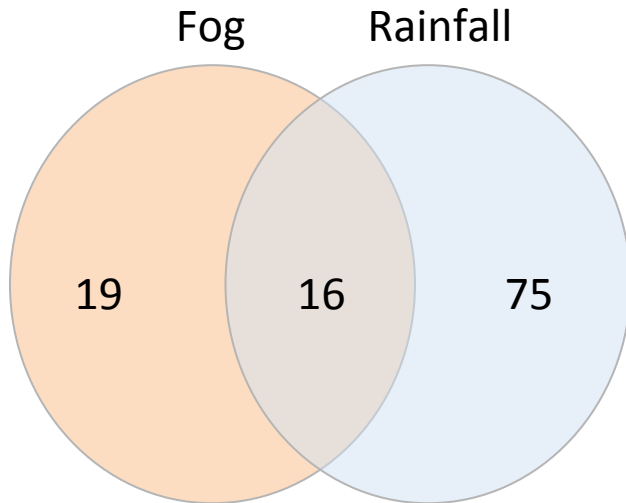
Fig. S2



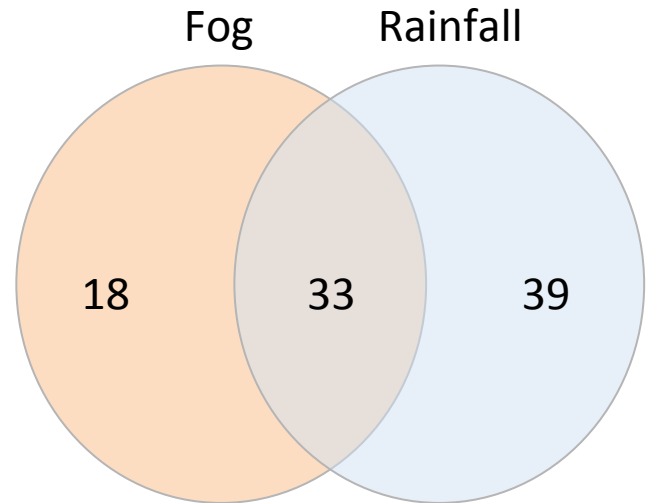
Heterotrophic bacteria
#OTUs=3918



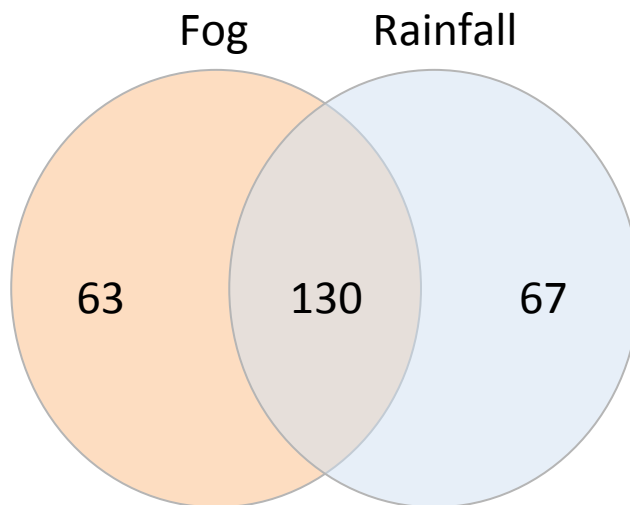
Cyanobacteria
#OTUs=517



Metazoa
#OTUs=110



Protista
#OTUs=90



Network
#OTUs=260

Figure S3a

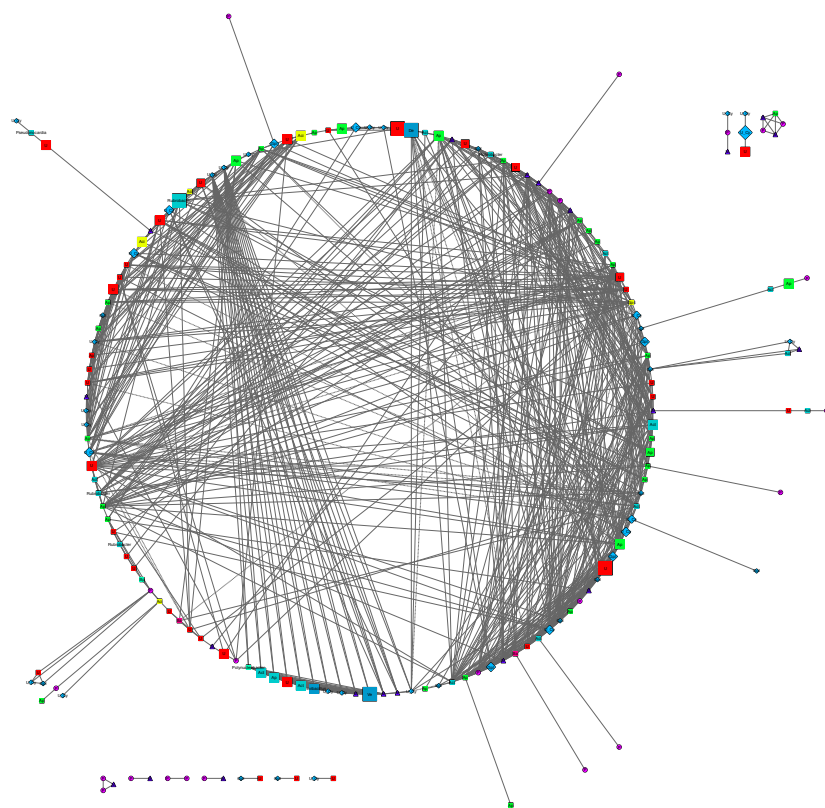


Figure S3b

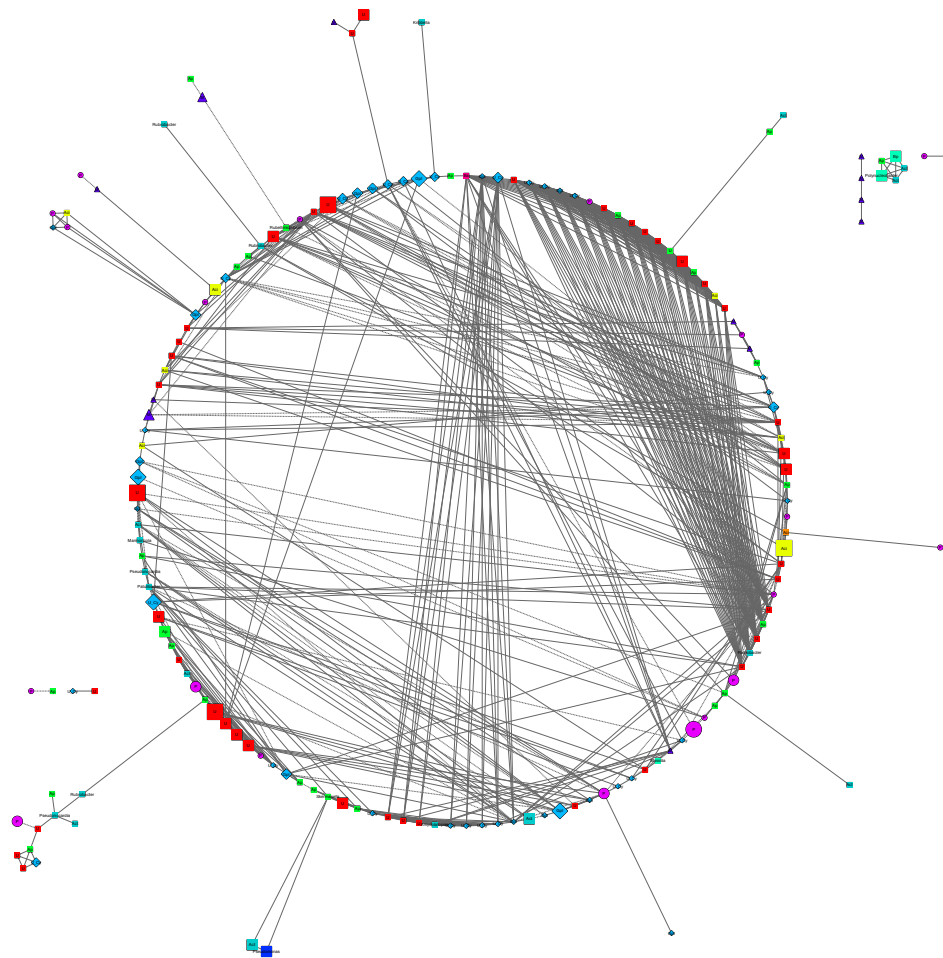


Fig. S4

