

Biogeography of actinobacterial communities in hot springs

Angel Valverde, Marla Tuffin, Don A. Cowan*

Institute for Microbial Biotechnology and Metagenomics, University of the Western Cape, Bellville 7535, Cape Town, South Africa.

*Corresponding author: Don A. Cowan. dcowan@uwc.ac.za

Ph: +27 (0)21 959 2083; Fax: +27 (0)21 959 3505

Abstract

Actinobacteria are ubiquitous in soil, freshwater and marine ecosystems. Although various studies have focused on the microbial ecology of this phylum, data is scant on the ecology of actinobacteria endemic to hot springs. Here, we have investigated the molecular diversity of eubacteria, with specific focus on the actinobacteria in hot springs in Zambia, China, New Zealand and Kenya. Temperature and pH values at sampling sites ranged between 44.5-86.5°C and 5-10, respectively. Non-metric multidimensional scaling analysis of 16S rRNA gene T-RFLP patterns showed that samples could be separated by geographical location. Multivariate analysis showed that actinobacterial community composition was best predicted by changes in pH and temperature, whereas temperature alone was the most important variable explaining differences in bacterial community structure. Using 16S rRNA gene libraries, 28 major actinobacterial OTUs were found. Both molecular techniques indicated that many of the actinobacterial phylotypes were unique and exclusive to the respective sample. Collectively, these results support the view that both actinobacterial diversity and endemism are high in hot spring ecosystems.

Keywords: Actinobacteria, biogeography, diversity, hot springs

INTRODUCTION

Actinobacteria are ubiquitous highly diverse microorganisms [2,18,26] involved in the turnover of organic matter. Although actinobacteria are often considered as soil-borne

bacteria, these organisms are also known as pathogens of animals, including humans, and plants [29,34,52]. Other actinobacterial species form beneficial associations with plants [4] and insects [22]. Furthermore, actinobacteria are well-known producers of a vast array of secondary metabolites [55], many of which have useful applications in medicine, veterinary and agriculture. It therefore follows that an understanding of actinobacterial distribution in the environment is important in deciphering the ecological role of these organisms and for biotechnological bioprospecting.

Hot springs are often isolated habitats, ideal for studies of the interactions between organisms and for their ability to adapt to extreme conditions. Physical isolation may create an “island effect”, leading to evolutionary adaptations resulting in highly divergent structural and functional characteristics [38]. Hot spring communities are also considered as analogues of early earth and even extraterrestrial conditions [7]. Moreover, thermophiles and their products are of considerable biotechnological interest, having found effective applications in fields as diverse as PCR and biohydrometallurgy [16].

Molecular approaches have revolutionized microbial ecology and revealed that bacteria, like animals and plants, exhibit biogeographic patterns shaped by distance and historical and contemporary environmental conditions (e.g. [19,42]).

Microbial biography studies in hot springs, a great number carried out in Yellowstone National Park, have shown these environments containing highly distinct community structures, where archaea, cyanobacteria, chloroflexi and acidobacteria are among the microorganisms most commonly found [35,40,50-51,23,56]. Such studies have typically focused on the broader microbial community and very little is known on the biogeography of actinobacteria in hot springs. For instance, Walker et al. [53] found several sequences belonging to *Mycobacterium* sp. in pore water extracted from rocks collected in Norris Geyser Basin. The study of two alkaline-silica hot springs by Miller et al. [35] found that only 3 of 391 bacterial operational taxonomic units (OTUs) could be classified as Actinobacteria. In addition, to our knowledge, only the work by Song et al. [49] has specifically addressed the diversity of Actinobacteria in hot springs. However, the actinobacterial distribution in these environments has not been related to physicochemical properties other than temperature. Clearly, more research is needed in order to elucidate the biogeographic patterns and environmental factors that shape the structure of this important subgroup of bacteria in hot springs. Determining factors that control actinobacterial community structure will play an important role in identifying

sampling sites for bioprospecting.

Here we provide additional insight into the structure of actinobacterial communities in hot springs, with a comparison of four thermal sites, widely separated geographically and by physicochemical properties. Since subgroups can be controlled by factors other than those that influence the entire community, the biogeographic pattern of the total bacterial community in these sites was also investigated.

MATERIALS AND METHODS

Site description and sampling

Four different locations with contrasting environmental conditions (Table 1) were chosen for the analysis. Kenyan sediments were taken from Lake Magadi hot springs (S01° 53.219', E36° 17.536'), located in Great Rift Valley, Kenya. The area is an arid tropical zone where tectonic activity has created a series of shallow depressions. Surface evaporation rates exceed the rate of inflow of water allowing the dissolved minerals to concentrate into a caustic alkaline brine with CO_3^{2-} and Cl^- as major anions, creating a pH of 8.5 to >12.

Zambian sediments were collected from Gwisho hot spring (S15° 59.526', E27° 14.520'), located in Lochinvar National Park. The Gwisho hot springs occur along a geological fault where the water rises by convection with temperatures ranging from 60° to 90° C. There are high concentrations of sodium, chlorine, calcium and sulphates in the water.

Chinese hydrothermal sediments were sampled from Rehai thermal area (N24° 51.213', E98° 23.456'), near Tengchong, Yunnan Province. The Rehai geothermal field is located in Tengchong County, in the western Yunnan Province. It extends over 10 km² where alkaline boiling springs, spouting boiling springs, intermittent spouting springs, hydrothermal eruption vents, high-temperature fumaroles, and widespread areas of steaming ground are commonly found.

New Zealand samples were collected from Tokaanu geothermal site (S38° 58.249', E175° 46.114'), North Island, New Zealand. Tokaanu is one of the major geothermal fields of the Taupo volcanic zone (TVZ), situated in the North island of New Zealand. The TVZ covers an area approximately 30 kilometers wide by 150 kilometers long and contains 23 known geothermal fields consisting of a number of geysers, sinters deposits, hot springs and pools, steaming cliffs, fumaroles, steam vents and seepages.

Three sediment samples were collected at each site, introduced into sterile 50-mL Falcon conical tubes, and stored immediately on dry ice. Water pH was measured *in situ* using pH strips (Merck) and temperature was measured using a Solomat 52°C temperature monitor. Anion analysis was performed using ion chromatography by the Environmental Laboratory at Stellenbosch University (South Africa), following standard procedures.

DNA extraction

Metagenomic DNA was extracted from sediments using the protocol described by Ellis et al. [12] with minor modifications. Briefly, sediments (250 mg) were incubated with 1 ml of buffer (100 mM Tris-HCl, 100 mM EDTA [pH 8.0], 100 mM phosphate buffer [pH 8.0], 1.5 M NaCl, 1% CTAB), 10 µl proteinase K (20 mg/ml) and 1 mg of lysozyme at 37°C for 2 hours with agitation (225 rpm). Subsequently, 120 µl of 20% SDS was added, and the samples were incubated at 65°C for 1 hour. The samples were then centrifuged at 5,000 xg for 10 min. The supernatant was transferred to a new tube and consecutively extracted with an equal volume of phenol, phenol-chloroform-isoamyl alcohol (25:24:1) and chloroform-isoamyl alcohol (24:1). The aqueous phase was precipitated with 0.6 volume of isopropanol. After centrifugation, pellets were washed with 300 µl of 70% ethanol and air dried before resuspending in 50 µl of ultrapure water. Genomic DNA was extracted in triplicate, pooled and purified using PVPP spin columns [6].

Terminal-Restriction Fragment Length Polymorphism (T-RFLP) Analysis

Bacterial 16S rRNA gene amplification was performed using primer pair 341F (5'-CCTACGGGAGGCAGCAI-3') [21], and 908R (5'-CCGTCAATTCMTTGTGAGTTI-3') [25]. For actinobacterial-specific amplifications, primers 226-243-F (5'-GGATGAGCCCGCGGCCTA-3') [17] and (A3R) 1414-1430-R (5'-CCAGCCCCACCTTCGAC-3) [36] were used. Bacterial primers were modified by the addition of inosine at the 3' end in an attempt to broaden their target scope [3]. In both primer pairs, the forward primer was labeled with 6' carboxyfluorescein (6-FAM).

Each PCR mixture (50 µl) contained 2U of DreamTaq (Fermentas, Vilnius, Lithuania), 0.5 µM each primer, 0.1 mM dNTPs, 10 µg of BSA, and 20 ng of DNA. Cycling conditions for bacteria were: 4 min at 94°C; 25 cycles of 1 min at 94°C, 1 min at 55°C and 2 min at 72°C; and a final extension of 10 min at 72°C. For actinobacteria: cycling

conditions were 4 min at 94°C; 25 cycles of 30 s at 94°C, 2 min at 68°C and 60 s at 72°C; 10 min at 72°C. PCR products were combined from three amplification reactions per sample, verified by agarose gel electrophoresis and purified with NucleoSpin Extract II (BD Biosciences Clontech, Japan). Approximately 200 ng of purified products were digested in separate reactions using *TaqI*, *AluI* and *HhaI* restriction enzymes (Fermentas). After purification as above, samples were subjected to capillary electrophoresis using the Applied Biosystems DNA Sequencer 3130 (Applied Biosystems, Foster City, California, USA). Terminal restriction fragments (T-RFs) data generated by Peak Scanner software v1.0 (Applied Biosystems) were filtered and binned by the method developed by Abdo et al. [1]. For each sample, peaks over a threshold of 50 fluorescence units were used and T-RFs of < 30 bp were excluded from the analysis to avoid detection of primers.

Statistical analysis of T-RFLP fingerprints

Non-parametric multivariate statistical analysis was performed using the PRIMER 6 software package (PRIMER-E Ltd, Plymouth, UK). Sample-similarity matrices were generated using Sorensen coefficient on presence/absence data [9]. The community structure was explored by ordination using non-metric multidimensional scaling (NMDS). An analysis of similarity (ANOSIM), performed on the resemblance matrix, was used to test for differences in bacterial community structure between predefined groups [8]. The significance of the Anosim R-statistic was tested by Monte Carlo randomization with 999 permutations. To control for false-positive errors that occur during multiple statistical comparisons, P-values were subjected to the Bonferroni correction [41]. The influence of temperature and pH on the community structure of the samples was assessed using the BEST analysis [10]. The significance of the correlations between two distance matrices was calculated using the Mantel test [27] with 999 matrix permutations. Mantel test and other statistical analyses were performed using R software (<http://www.r-project.org/>).

16S rRNA gene clone library construction and phylogenetic analysis

Representative clone libraries were constructed after pooling equal amounts of amplicons from the individual samples for each location obtained with 226-243-F and 1414-1430-R primers. Aliquots of the pooled products were cloned into *Escherichia*

coli DH5 α using pGEM-T cloning kit (Promega, Madison, Wisconsin, USA) and transformants were selected by blue-white screening. The presence of correctly sized inserts was confirmed by colony PCR (using M13F/R primers). ARDRA analysis (using *AluI* and *RsaI*) was used to dereplicate clones. Restriction patterns were visualized on 2% agarose gels and analysed using Gelcompare II (Applied Maths, Keistraat, Belgium).

Plasmid DNA was extracted using QIAprep Spin Miniprep kit (Qiagen GmbH, Hilden, Germany) and a representative of each unique restriction pattern sequenced using the vector primer M13F with an ABI 3130 DNA Sequencer (Applied Biosystems).

Putative chimeric sequences were filtered using Bellerophon [20]. Sequences of > 97% identity were grouped into OTUs using MOTHUR [47]. Taxonomic assignments of representative OTUs were obtained using the Classifier tool [54] (confidence threshold 80%) from the Ribosomal Database Project II (<http://rdp.cme.msu.edu/>) [11]. Sequences were aligned using the SINA aligner from the SILVA project (<http://www.arb-silva.de>) [39] and imported into ARB [31] where alignments were manually curated. The phylogenetic tree was constructed by the neighbour-joining method [43] after the Jukes-Cantor model for nucleotide substitution was applied. The robustness of the tree topology was evaluated by bootstrap analysis [13] based on 1000 resamplings. Sequences obtained in this study were deposited in the NCBI GenBank database under accession numbers JN806355-JN806382.

Diversity analyses were performed on aligned DNA sequences of 671-884 nucleotides in length. Intracommunity diversity was calculated using rarefaction, ACE and the Shannon-Weaver diversity index implemented in MOTHUR. All analyses were performed using the furthest neighbor algorithm with a 3% cut-off (species level) [46]. Clones that were not sequenced but shared the same RFLP pattern were duplicated in alignments.

Intercommunity OTU composition was evaluated with UniFrac analysis (<http://bmf2.colorado.edu/unifrac/>) [30]. Jackknife analysis was used to assess the confidence of tree nodes. Clone libraries were compared using β -Libshuff analysis [46].

RESULTS

Using molecular analysis of the 16S rRNA gene, the eubacterial diversity, with specific focus on the actinobacterial composition, was compared between four geographically separated thermal sites in Zambia (ZA), China (CH), New Zealand (NZ) and Kenya

(KE).

T-RFLP community structure analysis

The 16S rRNA gene amplicons were digested with *TaqI*, *AluI* and *HhaI*. Mantel test analysis revealed a significant pairwise correlation between T-RFs matrices at all possible combinations for the three restriction enzymes (Mantel R between 0.379 and 0.901 for actinobacteria, and between 0.508 and 0.828 for bacteria, all $P=0.001$). Thus, all data presented here refer to restriction enzyme *TaqI*, for both bacteria and actinobacteria.

Analysis of actinobacterial T-RFs data for all samples identified a total of 56 distinct T-RFs ranging in size from 33 to 941 bp. The highest number of T-RFs was observed in KE-3 (17) and the lowest in CH-3, NZ-2 and NZ-3 (8) (Table 1). Analysis of bacterial T-RFs data identified a total of 84 distinct fragments that ranged in size from 58 to 583 bp. The highest number of bacterial T-RFs was observed in ZA-1 (40), and the lowest in KE-2 and KE-3 (22) (Table 1). A Venn diagram showing the distribution of the TRFs between the sites is presented in supplementary figure (Online Resource 1). For actinobacteria, a significant negative correlation between the number of T-RFs and temperature was found (Spearman's $\rho=-0.75$, $P=0.005$). Differences in the T-RFLP patterns between all samples were visualized in a NMDS plot (Figure 1). Both bacteria and actinobacteria showed a clear separation of samples according to their geographic origin. Analysis of similarity (ANOSIM) showed that the community composition of both actinobacteria and bacteria differed between sampling sites (ANOSIM $R=0.642$, $P=0.021$ and $R=0.875$, $P=0.001$; respectively). However, all pairwise comparisons between sites were not significant after Bonferroni correction.

Temperature and pH were negatively correlated ($\rho=-0.65$, $P=0.024$) and strongly shaped the structure of the microbial communities as showed by BEST analysis. Thus, for the actinobacteria the highest Spearman's rho (ρ) correlation of 0.362 ($P=0.014$) was due to a combination of temperature and pH, whereas for the bacterial data the highest correlation ($\rho=0.709$, $P=0.001$) was due to temperature alone.

Mantel test confirmed that geographic distance was also a significant factor influencing both bacterial and actinobacterial composition (Mantel $R=0.246$ and $R=0.145$, respectively, both $P\leq 0.05$).

Actinobacterial 16S rRNA gene library analysis

A total of 400 actinobacterial clones were subjected to RFLP analysis, identifying 51 unique banding patterns (data not shown). A total of 28 different OTUs (97% similarity cut-off) were found, of which 19 were affiliated as “actinobacteria” and 9 could not be classified (“unclassified bacteria”).

Phylogenetic analyses showed that a high proportion of actinobacterial sequences were only distantly related to other environmental clones (50-97% similarity values), with very few showing high similarity to cultured isolates (> 97%) (Table 2, Figure 2). Those clones that could be affiliated at the species level (> 97% identity) belonged to the genera *Mycobacterium* (4.6% abundance), *Glycomyces* (1.3%), *Aeromicrobium* (1.3%) and *Couchiplanes* (1.3%), all members of the order Actinomycetales.

Diversity indices showed a difference between the four clone libraries (Table 3), with the libraries from KE and CH being the most diverse and that from NZ the least. The ACE values and the fact that rarefaction curves (Figure 3) reached an asymptote both indicate that in the ZA, KE and NZ libraries, an accurate assessment of actinobacterial diversity was obtained. In contrast, the rarefaction curve and ACE values for the CH library indicates that sampling was below saturation and more sequences would be required to generate a stable estimate of species richness. The Shannon-Weaver index values also corroborate these findings, indicating that the KE and CH libraries were the most diverse. Results from β -Libshuff analysis of the 16S rRNA gene clone libraries indicated that the communities differed significantly between all pairwise combinations ($P \leq 0.05$, after Bonferroni correction). UniFrac analysis of 16S rRNA gene clone libraries supported the conclusion that location had an impact on the composition of the actinobacterial community and that the result was significant. A greater similarity between KE and ZA libraries relative to CH and ZA libraries was observed, forming a separate cluster (Online Resource 2).

DISCUSSION

Molecular fingerprinting methods, such as T-RFLP, allow descriptions of broad-scale changes in the taxonomic composition of bacterial communities [28] although the limitations and disadvantages of the technique are well documented (e.g. [48,57]).

Our results are in agreement with Zhang et al. [57] and showed that the choice of restriction enzymes in the T-RFLP technique generated highly variable species richness

and diversity indices (data not shown). As a consequence, resemblance matrices based on presence/absence data were used in this study. However, it is important to note that in spite of these differences, the Mantel test analysis revealed consistent patterns in the bacterial and actinobacterial distribution, showing that this technique was suitable for community structure determination in this study [24,57].

In the last decade, information gathered from molecular surveys suggests that microbial biogeographic patterns are shaped by history and environmental factors (reviewed in Martini et al. [32]). For instance, pH has been found to be the best predictor of the continent-scale patterns exhibited by soil bacteria, with the highest diversity in soils with near-neutral pH [14]. Miller et al. [35], analyzing two hot spring bacterial communities along the temperature gradients in YNP, showed that diversity decreased with increasing temperature. Additionally, they found that community similarity decayed exponentially with increasing differences in temperature between samples but not with distance. In contrast, Papke et al. [38] demonstrated that distance effects dominated cyanobacterial diversity in hot springs from North America, Japan, New Zealand and Italy.

Here we show that actinobacterial and bacterial communities were composed of vastly different diversities. The NMDS analysis of T-RFLP profiles showed a clear delineation in bacterial and actinobacterial community structure between samples collected from different locations, with a very pronounced separation between the samples from New Zealand (the hottest site) and the remaining sites. The actinobacterial community composition was best predicted by differences in pH and temperature, whereas temperature alone was the most important factor explaining differences in structure for bacterial communities. Using T-RFLP and clone library analyses, we found that actinobacterial richness and diversity decreased with increasing temperature. In contrast to Miller et al. [35], we did not observe a decrease in the number of bacterial OTUs at the site with the highest temperature, and as previously found [40], the lowest bacterial richness was found at sites with the lowest temperature (Kenya samples). These findings suggest that other physicochemical parameters may play a role in structuring the bacterial community at this site, and support the idea that factors driving variation in bacterial community depend on spatial scale [33]. Nevertheless, as can be inferred from Table 1 and rarefaction curves (Figure 3), and has been shown in other studies [5,45], some discrepancy exists in the number of actinobacterial OTUs observed using both methodologies. Clearly, further research is required in order to elucidate the factors that

shape the structure of bacterial communities at these sites.

Several studies have shown that dispersal limitations exist for thermophiles, leading to the emergence of regionally distinct populations (e.g. [38,40,56]). ANOSIM and Mantel test analyses have shown that geographic distance between the sampling sites was positively correlated with differences in the actinobacterial communities. Moreover, Unifrac analysis, that considers phylogenetic lineages and not only shared OTUs, showed Zambia and Kenya hot springs (less distant sites) having a more similar actinobacterial community structure (Online Resource 2). Taken together, these findings, and those from Song et al. [49], indicate that the differences in actinobacterial community composition in hot springs are a function of both environmental heterogeneity and geographic distance [32,33,42].

Phylogenetic analyses revealed a high diversity of actinobacterial OTUs in hot springs samples, the majority of sequences belonging to unclassified taxa. Only four of twenty-eight OTUs showed high homology (>97%) to known actinobacterial species: *Couchiplanes caeruleus* (OTU 1), *Glycomyces harbinensis* (OTU 2) *Aeromicrobium panaciterrae* (OUT 6), and *Mycobacterium parascrofulaceum* (OTU 5). Interestingly, *M. parascrofulaceum* has also been found in acidic (pH 3.0-3.3) hot springs in Yellowstone National Park [44]. The fact that this OTU was sampled in Zambia and Kenya and over a range of pHs (pH 5-10), suggests that this species may be ubiquitous in hot springs. The bulk of the OTUs showed widely varying levels of similarity (50-97%) to environmental sequences recovered from different habitats, including hot springs, radioactive soils, anthracene-contaminated soils and prairie soils (Table 2). As in other environmental studies, several of the sequences identified showed some similarity to non-thermophilic representatives in the databases [35, 49]. However, sequences from “extreme” environments are poorly represented in these databases, and studies of soil bacterial communities have received considerably more attention than those from hot springs.

Interestingly, the majority of those OTUs (7 of 9) that could not be classified as actinobacteria were found in the clone library from China samples (Figure 2). In agreement with these findings, Song et al. [49] also reported some degree of non-specificity of the primers used, as they found several sequences related to formerly candidate phylum OP10 (now described as phylum Armatimonadetes). Moreover, they showed highest diversity (15 RFLP types) in the Tengchong sample (12 km from our sampling location). Fewer OTUs were retrieved from the clone library prepared from

our China samples, but rarefaction analysis indicates that the library was not exhaustively sampled. This was further confirmed by the number of TRFs obtained. Collectively, these findings show that this site supports unusually high actinobacterial diversity, and could be a valid target for future bioprospecting. The most striking result is that a very high proportion of the phylotypes detected were unique to the site: i.e., detected in only one sample (Figures 1 and 4). Moreover, the phylotype abundance distribution showed the dominance of a few OTUs in each library (Figure 4), whereas most of the OTUs were relatively rare, resembling the classic “long tail” phenomenon [15]. Only two OTUs were shared between the clone libraries; OTU 5 between Kenyan and Zambian hot springs, and OTU 12 between the Chinese, New Zealand and Zambian sites, and was coincidentally the most abundant in China and New Zealand libraries (39% and 60% of the clones, respectively) (Figure 4). Noticeably, two closest relatives to these OTUs have been found in Yellowstone National Park (*M. parascrofulaceum* and sequence DQ324877, respectively).

The results from this study are in accordance with previous findings [38,56] and suggest that hot springs contain highly endemic populations of microorganisms. We are necessarily extrapolating from small sample sizes and numbers to entire hot spring communities. However, the data presented here is supported by the recent work by Nemergut et al. [37] showing that macro-scale habitats structure bacterial distribution and that there is a positive relationship between the relative abundance of an organism and its distribution across assemblages. Detectable bacteria are confined to single assemblages and the most cosmopolitan taxa are also the most abundant in individual assemblages. We suggest that the emergence of significant and robust patterns in this study indicates that actinobacterial communities are highly diverse and endemic to hot springs.

Acknowledgements

The authors gratefully acknowledge the National Research Foundation (South Africa) for support of this research.

References

1. Abdo Z, Schuette UME, Bent SJ, Williams CJ, Forney LJ, Joyce P (2006) Statistical methods for characterizing diversity of microbial communities by analysis of terminal restriction fragment length polymorphisms of 16S rRNA genes. *Environ Microbiol* 8 5:929-938
2. Allgaier M, Grossart HP (2006) Diversity and seasonal dynamics of Actinobacteria populations in four lakes in northeastern Germany. *Appl Environ Microbiol* 72 5:3489-3497
3. Ben-Dov E, Shapiro OH, Siboni N, Kushmaro A (2006) Advantage of using inosine at the 3' termini of 16S rRNA gene universal primers for the study of microbial diversity. *App Environ Microbiol* 72 :6902-6906
4. Benson DR, Silvester WB (1993) Biology of *Frankia* strains, actinomycete symbionts of actinorhizal plants. *Microbiol Rev* 57:293-319
5. Bent SJ, Forney LJ (2008) The tragedy of the uncommon: understanding limitations in the analysis of microbial diversity. *ISME J* 7:689-695
6. Berthelet M, Whyte LG, Greer CW (1996) Rapid, direct extraction of DNA from soils for PCR analysis using polyvinylpolypyrrolidone spin columns. *FEMS Microbiol Lett* 138:17-22
7. Chapelle FH, O'Neill K, Bradley PM, Methe BA, Ciufo SA, Knobel LL, Lovley DR (2002) A hydrogen-based subsurface microbial community dominated by methanogens. *Nature* 415:312-315
8. Clarke KR (1993) Non-parametric multivariate analyses of changes in community structure. *Aust J Ecol* 18:117-143
9. Clarke KR, Warwick RM (2001) *Changes in Marine Communities: An Approach to Statistical Analysis and Interpretation*, 2nd edn. Primer-E Ltd.: Plymouth, Marine Laboratory, Plymouth UK
10. Clarke KR, Gorley RN (2006) *PRIMER v6: User Manual*. Plymouth Marine Laboratory. Plymouth, UK
11. Cole JR, Wang Q, Cardenas E, Fish J, Chai B, Farris RJ, Kulam-Syed-Mohideen AS, McGarrell DM, *et al.* (2009) The Ribosomal Database Project: improved alignments and new tools for rRNA analysis. *Nucleic Acids Res* 37:D141-D145
12. Ellis RJ, Morgan P, Weightman AJ, Fry JC (2003) Cultivation-dependent and -independent approaches for determining bacterial diversity in heavy-metal-

- contaminated soil. *Appl Environ Microbiol* 69:3223-3230
13. Felsenstein J (1985) Confidence limits on phylogenies: an approach using the bootstrap. *Evolution* 39:783-791
 14. Fierer N, Jackson RB (2006) The diversity and biogeography of soil bacterial communities. *P Natl Acad Sci USA* 103:626-631
 15. Fuhrman JA (2009) Microbial community structure and its functional implications. *Nature* 459:193-199
 16. Gericke M, Neale JW, van Staden PJ (2009) A Mintek perspective of the past 25 years in minerals bioleaching. *J S Afri Inst Min Metall* 109 (10):567-585
 17. Heuer H, Krsek M, Baker P, Smalla K, Wellington EMH (1997) Analysis of actinomycete communities by specific amplification of genes encoding 16S rRNA and gel-electrophoretic separation in denaturing gradients. *Appl and Environ Microbiol* 63:3233-3241
 18. Holmfeldt K, Dziallas C, Titelman J, Pohlmann K, Grossart H-P, Riemann L (2009) Diversity and abundance of freshwater Actinobacteria along environmental gradients in the brackish northern Baltic Sea. *Environ Microbiol* 11:2042-2054
 19. Horner-Devine MC, Lage M, Hughes JB, Bohannon BJM (2004) A taxa-area relationship for bacteria. *Nature* 432:750-753
 20. Huber T, Faulkner G, Hugenholtz P (2004) Bellerophon: a program to detect chimeric sequences in multiple sequence alignments. *Bioinformatics* 20:2317-2319
 21. Ishii K, Fukui M (2001) Optimization of annealing temperature to reduce bias caused by a primer mismatch in multitemplate PCR. *Appl Environ Microbiol* 67:3753-3755
 22. Kaltenpoth M (2009) Actinobacteria as mutualists: general healthcare for insects? *Trends Microbiol* 17:529-535
 23. Klatt CG, Wood JM, Rusch DB, Bateson MM, Hamamura N, Heidelberg JF, Grossman AR, Bhaya D, Cohan FM, Kuhl M, *et al.* (2011) Community ecology of hot spring cyanobacterial mats: predominant populations and their functional potential. *ISME J* 5:1262-1278
 24. Lage MD, Reed HE, Weihe C, Crain CM, Martiny JBH (2010) Nitrogen and phosphorus enrichment alter the composition of ammonia-oxidizing bacteria in salt marsh sediments. *ISME J* 4:933-944
 25. Lane DJ, Pace B, Olsen GJ, Stahl DA, Sogin ML, Pace NR (1985) Rapid determination of 16S ribosomal RNA sequences for phylogenetic analyses. *P Natl*

26. Lauber CL, Hamady M, Knight R, Fierer N (2009) Pyrosequencing-based assessment of soil pH as a predictor of soil bacterial community structure at the continental scale. *Appl Environ Microbiol* 75:5111-5120
27. Legendre P, Legendre L (1998) *Numerical Ecology*. Elsevier Science BV, Amsterdam
28. Liu WT, Marsh TL, Cheng H, Forney LJ (1997) Characterization of microbial diversity by determining terminal restriction fragment length polymorphisms of genes encoding 16S rRNA. *Appl Environ Microbiol* 63:4516-4522
29. Locci R (1994) Actinomycetes as plant pathogens. *Eur J Plant Pathol* 100:179-200
30. Lozupone C, Hamady M, Knight R (2006) UniFrac: an online tool for comparing microbial community diversity in a phylogenetic context. *BMC Bioinformatics* 7:371
31. Ludwig W, Strunk O, Westram R, Richter L, Meier H, Yadukumar, Buchner A, Lai T, Steppi S, Jobb G *et al.* (2004) ARB: a software environment for sequence data. *Nucleic Acids Res* 32:1363-1371
32. Martiny JBH, Bohannan BJM, Brown JH, Colwell RK, Fuhrman JA, Green JL, Horner-Devine MC, Kane M, Krumins JA, Kuske CR, *et al.* (2006) Microbial biogeography: putting microorganisms on the map. *Nat Rev Microbiol* 4:102-112
33. Martiny JBH, Eisen JA, Penn K, Allison SD, Horner-Devine MC (2011) Drivers of bacterial beta-diversity depend on spatial scale. *P Natl Acad Sci USA* 108:7850-7854
34. McNeil MM, Brown JM (1994) The medically important aerobic actinomycetes: Epidemiology and microbiology. *Clin Microbiol Rev* 7 (3):357-417
35. Miller SR, Strong AL, Jones KL, Ungerer MC (2009) Bar-coded pyrosequencing reveals shared bacterial community properties along the temperature gradients of two alkaline hot springs in Yellowstone National Park. *Appl Environ Microbiol* 75:4565-4572
36. Monciardini P, Sosio M, Cavaletti L, Chiocchini C, Donadio S (2002) New PCR primers for the selective amplification of 16S rDNA from different groups of actinomycetes. *FEMS Microbiol Ecol* 42:419-429
37. Nemergut DR, Costello EK, Hamady M, Lozupone C, Jiang L, Schmidt SK, Fierer N, Townsend AR, Cleveland CC, Stanish L, Knight R (2011) Global patterns in the biogeography of bacterial taxa. *Environ Microbiol* 13:135-144
38. Papke RT, Ramsing NB, Bateson MM, Ward DM (2003) Geographical isolation in hot spring cyanobacteria. *Environ Microbiol* 5:650-659

39. Pruesse E, Quast C, Knittel K, Fuchs BM, Ludwig WG, Peplies J, Glockner FO (2007) SILVA: a comprehensive online resource for quality checked and aligned ribosomal RNA sequence data compatible with ARB. *Nucleic Acids Res* 35:7188-7196
40. Purcell D, Sompong U, Yim LC, Barraclough TG, Peerapornpisal Y, Pointing SB (2007) The effects of temperature, pH and sulphide on the community structure of hyperthermophilic streamers in hot springs of northern Thailand. *FEMS Microbiol Ecol* 60:456-466
41. Ramette A (2007) Multivariate analyses in microbial ecology. *FEMS Microbiol Ecol* 62:142-160
42. Ramette A, Tiedje JM (2007) Multiscale responses of microbial life to spatial distance and environmental heterogeneity in a patchy ecosystem. *P Natl Acad Sci USA* 104:2761-2766
43. Saitou N, Nei M (1987) The Neighbor-Joining Method: a new method for reconstructing phylogenetic trees. *Mol Biol Evol* 4:406-425
44. Santos R, Fernandes J, Fernandes N, Oliveira F, Cadete M (2007) *Mycobacterium parascrofulaceum* in acidic hot springs in Yellowstone National Park. *Appl Environ Microbiol* 73:5071-5073
45. Schauer R, Bienhold C, Ramette A, Harder J (2010) Bacterial diversity and biogeography in deep-sea surface sediments of the South Atlantic Ocean. *ISME J* 4:159-170
46. Schloss PD, Larget BR, Handelsman J (2004) Integration of microbial ecology and statistics: a test to compare gene libraries. *Appl Environ Microbiol* 70:5485-5492
47. Schloss PD, Westcott SL, Ryabin T, Hall JR, Hartmann M, Hollister EB, Lesniewski RA, Oakley BB, Parks DH, Robinson CJ, *et al.* (2009) Introducing mothur: open-source, platform-independent, community-supported software for describing and comparing microbial communities. *Appl Environ Microbiol* 75:7537-7541
48. Schutte UME, Abdo Z, Bent SJ, Shyu C, Williams CJ, Pierson JD, Forney LJ (2008) Advances in the use of terminal restriction fragment length polymorphism (T-RFLP) analysis of 16S rRNA genes to characterize microbial communities. *Appl Microbiol Biotech* 80 (3):365-380
49. Song Z, Zhi X, Li W, Jiang H, Zhang C, Dong H (2009) Actinobacterial diversity in hot springs in Tengchong (China), Kamchatka (Russia), and Nevada (USA).

50. Stott MB, Crowe MA, Mountain BW, Smirnova AV, Hou S, Alam M, Dunfield PF (2008) Isolation of novel bacteria, including a candidate division, from geothermal soils in New Zealand. *Environ Microbiol* 10:2030-2041
51. Stout LM, Blake RE, Greenwood JP, Martini AM, Rose EC (2009) Microbial diversity of boron-rich volcanic hot springs of St. Lucia, Lesser Antilles. *FEMS Microbiol Ecol* 70:402-412
52. Trujillo ME, Goodfellow M (2003) Numerical phenetic classification of clinically significant aerobic sporoactinomycetes and related organisms. *Anton Leeuw Int J G* 84:39-68
53. Walker JJ, Spear JR, Pace NR (2005) Geobiology of a microbial endolithic community in the Yellowstone geothermal environment. *Nature* 434:1011-1014
54. Wang Q, Garrity GM, Tiedje JM, Cole JR (2007) Naive Bayesian classifier for rapid assignment of rRNA sequences into the new bacterial taxonomy. *Appl Environ Microbiol* 73:5261-5267
55. Watve MG, Tickoo R, Jog MM, Bhole BD (2001) How many antibiotics are produced by the genus *Streptomyces*? *Arch Microbiol* 176:386-390
56. Whitaker RJ, Grogan DW, Taylor JW (2003) Geographic barriers isolate endemic populations of hyperthermophilic archaea. *Science* 301:976-978
57. Zhang R, Thiyagarajan V, Qian P-Y (2008) Evaluation of terminal-restriction fragment length polymorphism analysis in contrasting marine environments. *FEMS Microbiol Ecol* 65:169-178

Figure legends

Fig. 1 Non-metric multidimensional scaling based on T-RFLP profiles. A, actinobacteria (stress = 0.13); B, bacteria (stress = 0.09). ZA, Zambia; CH, China; NZ, New Zealand; KE, Kenya

Fig. 2 Neighbor Joining tree of representative 16S rRNA sequences described in this study. Only bootstrap values $\geq 50\%$ are shown. Bar, 0.1 substitutions per nucleotide position

Fig. 3 Rarefaction curves indicating the observed number of OTUs at a genetic distance of 3% in hot springs sediments. Kenya (squares), Zambia (triangles), China (circles), New Zealand (asterisks)

Fig. 4 Rank-abundance plots of OTUs observed in 16S rRNA clone libraries. Only the most abundant and/or shared OTUs (in bold) are shown

Figure 1

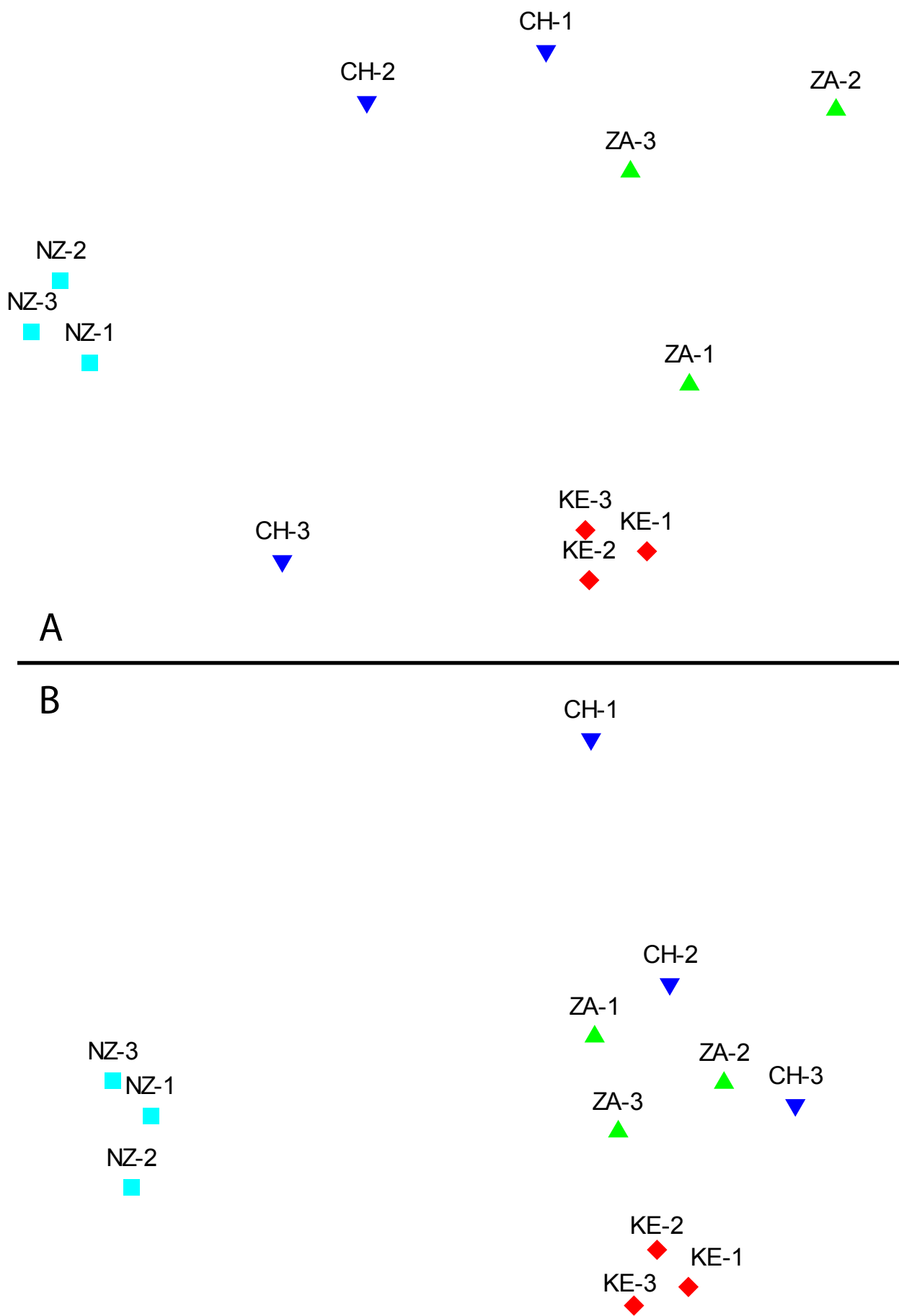


Figure 2

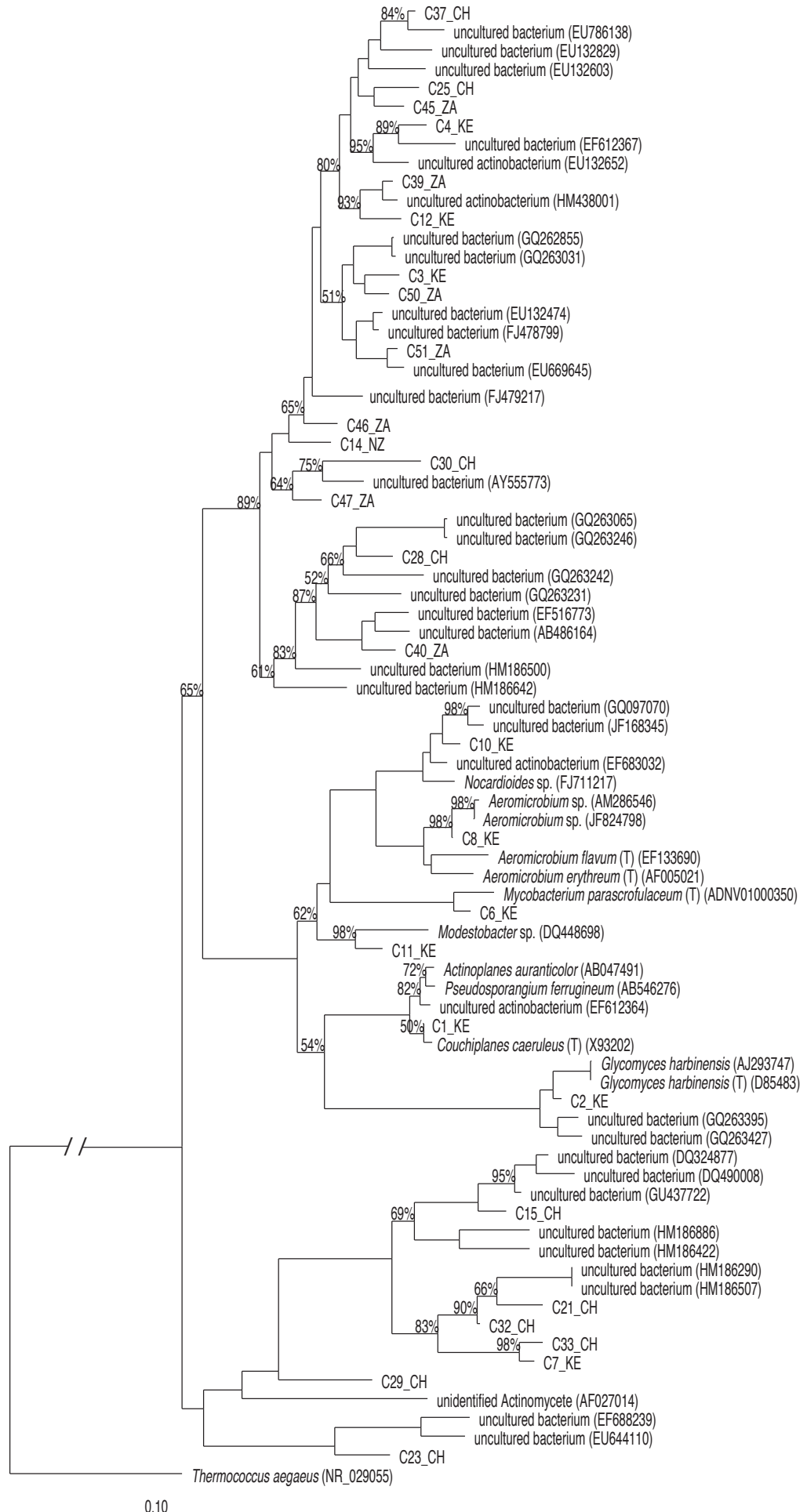


Figure 3

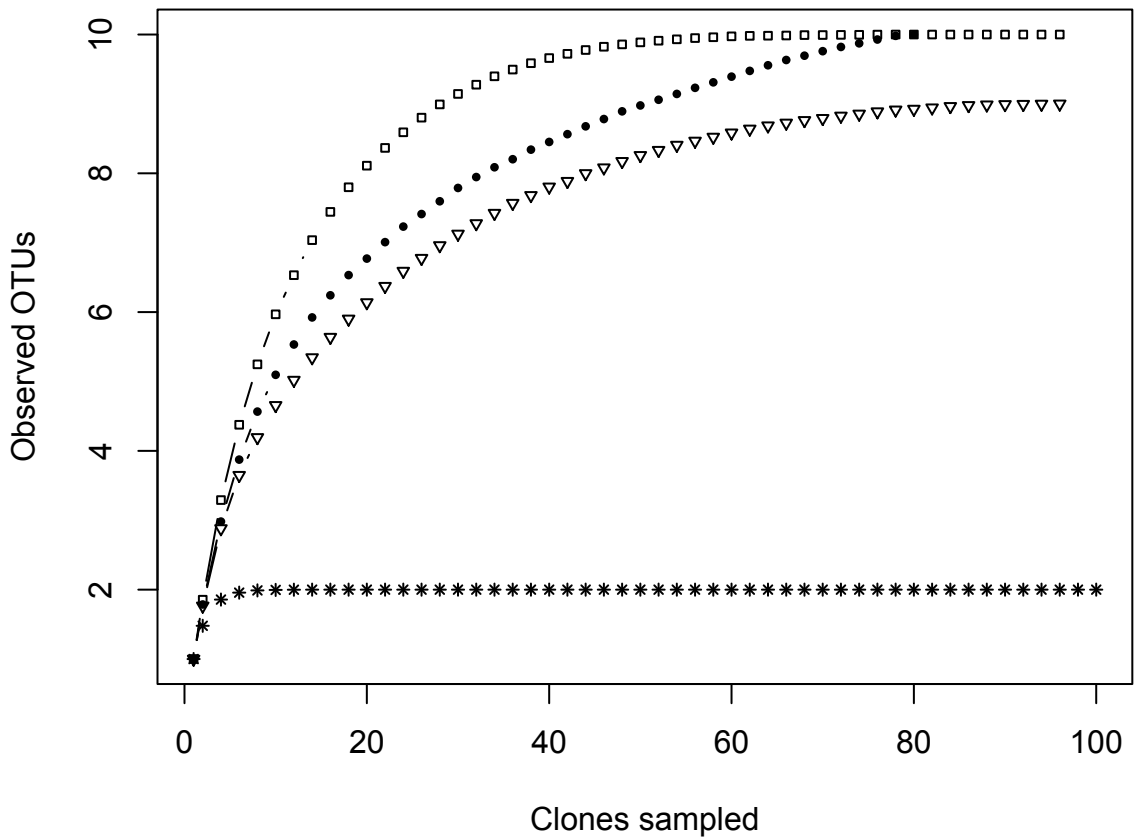
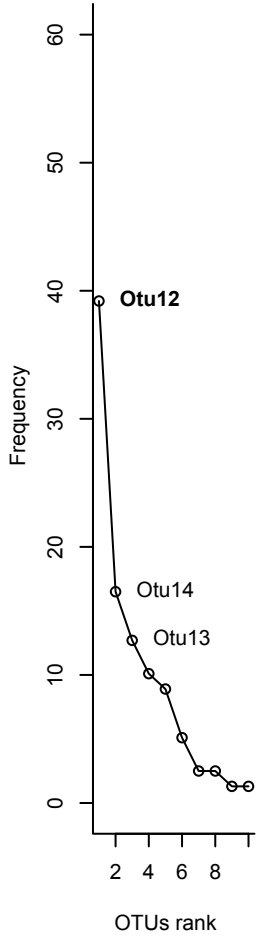


Figure 4

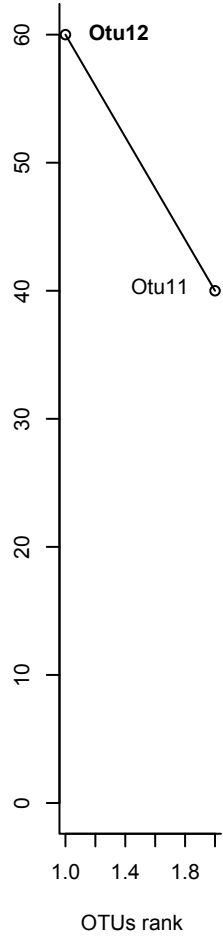
China



Zambia



New Zealand



Kenya

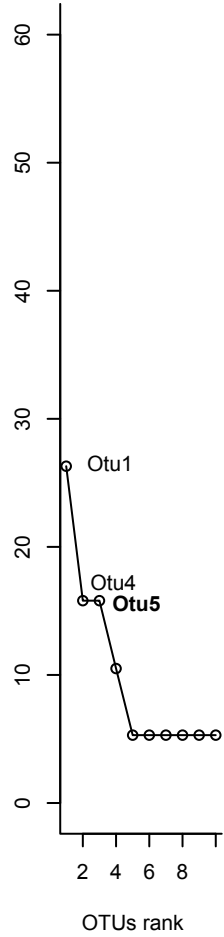


Table 1. Physicochemical and T-RFLP data of the hot springs sediments sampled.

Sample ^a	pH	Temperature (°C)	Number of TRFs	
			Bacteria	Actinobacteria
ZA-1	5.0	68.3	40	10
ZA-2	5.0	59.3	32	13
ZA-3	6.0	72.7	30	9
CH-1	8.0	66	34	9
CH-2	7.5	58.8	34	9
CH-3	8.5	62.5	32	8
NZ-1	6.5	86.5	31	9
NZ-2	6.5	86.5	31	8
NZ-3	6.5	86.5	34	8
KE-1	9.5	39.4	23	16
KE-2	9.5	44.5	22	16
KE-3	10	51.9	22	17

^aSampling sites. Zambia (ZA), China (CH), New Zealand (NZ), Kenya (KE)

Table 2. 16S rRNA clones identified in hot springs sediments.

OTU ^a	Representative sequence	Accession no.	Closest sequence match with BLASTN, origin (accession number)	Similarity (%)	Closest type strain ^b	Similarity (%)
1	C1_KE		<i>Couchiplanes caeruleus</i> , soil (NR_026295)	99	<i>Couchiplanes caeruleus</i> (X93202)	99.3
2	C2_KE		<i>Glycomyces harbinensis</i> , soil (AJ293747)	98	<i>Glycomyces harbinensis</i> (D85483)	98.1
3	C3_KE		Uncultured bacterium, soil (FJ478553)	96	<i>Streptomyces albiacialis</i> (AY999901)	87.5
4	C4_KE		Uncultured bacterium, lead-zinc mine (EF612367)	98	<i>Frankia alni</i> (CT573213)	88.3
5	C6_KE		<i>Mycobacterium</i> sp., tap water (GU084181)	99	<i>Mycobacterium parascrofulaceum</i> (ADNV01000350)	99.1
6	C7_KE		Uncultured bacterium, Hanford 300 area (HM186589)	95	<i>Thermosipho atlanticus</i> (AJ577471)	51.0
7	C8_KE		<i>Aeromicrobium</i> sp., soil (JF824798)	99	<i>Aeromicrobium panaciterrae</i> (AB245387)	97.6
8	C10_KE		Uncultured bacterium, air dust (EF683032)	98	<i>Nocardioides iriomotensis</i> (AB544079)	96.9
9	C11_KE		Uncultured Modestobacter, Taklamatan desert (JF411374)	96	<i>Modestobacter versicolor</i> (AJ871304)	96.1
10	C12_KE		Uncultured bacterium, soil contaminated with anthracene (HM438001)	97	<i>Aciditerrimonas ferrireducens</i> (AB517669)	88.5
11	C14_NZ		Uncultured bacterium, saline-alkaline soil (JN037894)	96	<i>Streptomyces glaucosporus</i> (AB184664)	89.1
12	C15_NZ		Uncultured bacterium, geothermal system, Yellowstone National Park (DQ324877)	99	<i>Nitrosococcus oceanis</i> (AY033493)	87.3
13	C21_CH		Uncultured bacterium, Hanford 300 area (HM186978)	95	<i>Laceyella putida</i> (AF138736)	49.3
14	C23_CH		Uncultured actinobacterium, sludge (CU924270)	97	<i>Kribbella yunnanensi</i> (CP000127)	88.3
15	C28_CH		Uncultured bacterium, radioactive-waste site (GQ263231)	95	<i>Thermoleophilum minutum</i> (AJ458464)	89.8
16	C25_CH		Uncultured bacterium, prairie soil (EU132603)	96	<i>Streptomyces panacagri</i> (AB245388)	50.1
17	C29_CH		Uncultured bacterium, soil (EU132572)	90	<i>Frankia alni</i> (CT573213)	48.2
18	C30_CH		Uncultured bacterium, hot spring, Thailand (AY555773)	93	<i>Thermoleophilum minutum</i> (AJ458464)	48.9
19	C32_CH		Uncultured bacterium, prairie soil (FJ479127)	96	<i>Thermotoga subterranea</i> (U22664)	70.7
20	C33_CH		Uncultured bacterium, soil (EF020292)	96	<i>Sporichthya polymorpha</i> (AB025317)	89.5
21	C37_CH		Uncultured bacterium, rizhosphere soil (EU786138)	98	<i>Acidothermus cellulolyticus</i> (CP000481)	88.4
22	C39_ZA		Uncultured bacterium, soil contaminated with anthracene (HM438001)	99	<i>Streptomyces capillispiralis</i> (AB184577)	88.2
23	C40_ZA		Uncultured bacterium, soil (EF516773)	96	<i>Luedemannella flava</i> (AB236959)	89.1
24	C45_ZA		Uncultured bacterium, soil (FJ478871)	96	<i>Streptomyces caniferus</i> (AB184640)	89.8
25	C46_ZA		Uncultured bacterium, river sediments (EU262361)	98	<i>Streptomyces youssoufienis</i> (FN421338)	89.1
26	C47_ZA		Uncultured bacterium, hot spring, Thailand (AY555773)	96	<i>Acidimicrobium ferrooxidans</i> (CP001631)	88.4
27	C50_ZA		Uncultured bacterium, low-level-radioactive-waste site (GQ262855)	97	<i>Frankia alni</i> (CT573213)	88.0
28	C51_ZA		Uncultured bacterium, environmental sample (EU669645)	98	<i>Acidothermus cellulolyticus</i> (CP000481)	

^a Actinobacterial OTUs are defined as < 97% difference. ^b Identification based on the 16S rRNA gene sequence using EzTaxon server (<http://www.eztaxon.org>) OTU, operational taxonomic unit.

Table 3. Estimated diversity indices for actinobacterial clone libraries.

Location	ACE	Shannon
Zambia	9.0 (9.0, 9.0)	1.7 (1.5, 1.9)
China	11.4 (10.2, 21.0)	1.8 (1.6, 2.0)
New Zealand	0	0.7 (0.6, 0.7)
Kenya	10.0 (10.0, 10.0)	2.1 (1.9, 2.2)

Values in parentheses represent the 95% confidence intervals.