

**Supplemental File 1.** Demographic characteristics of the study participants (Total of 6000 participants and 12000 bilateral teeth)

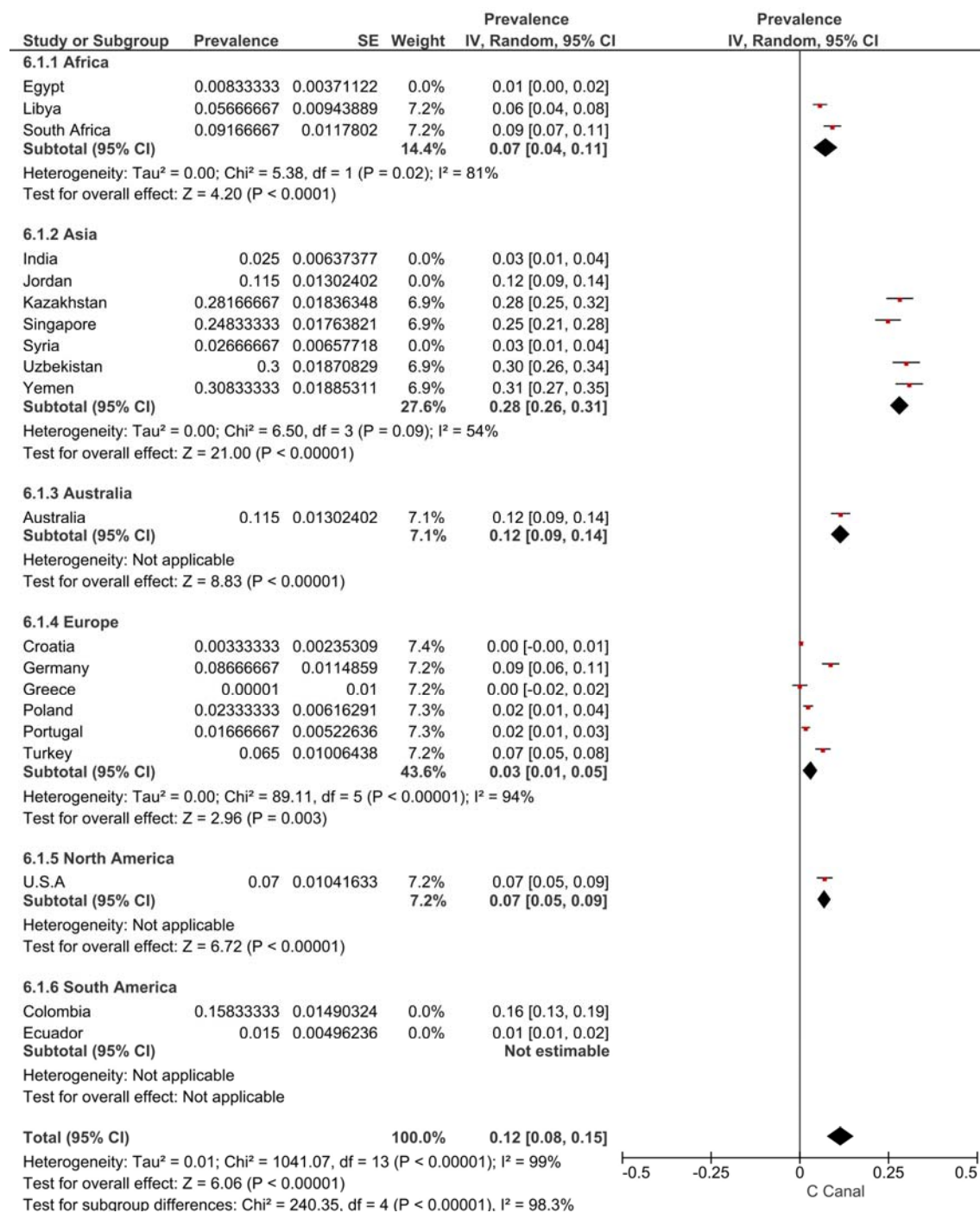
|                      | Gender         |                | Age range     |                |                |                |               |               |
|----------------------|----------------|----------------|---------------|----------------|----------------|----------------|---------------|---------------|
|                      | Female         | Male           | <20 years     | 20-30 years    | 30-40 years    | 40-50 years    | 50-60 years   | >60 years     |
| Australia (N=300)    | 150.0 (50.0%)  | 150.0 (50.0%)  | 1.0 (0.3%)    | 16.0 (5.3%)    | 49.0 (16.3%)   | 85.0 (28.3%)   | 95.0 (31.7%)  | 54.0 (18.0%)  |
| Colombia (N=300)     | 148.0 (49.3%)  | 152.0 (50.7%)  | 35.0 (11.7%)  | 43.0 (14.3%)   | 64.0 (21.3%)   | 57.0 (19.0%)   | 50.0 (16.7%)  | 51.0 (17.0%)  |
| Croatia (N=300)      | 183.0 (61.0%)  | 117.0 (39.0%)  | 16.0 (5.3%)   | 47.0 (15.7%)   | 98.0 (32.7%)   | 44.0 (14.7%)   | 42.0 (14.0%)  | 53.0 (17.7%)  |
| Ecuador (N=300)      | 176.0 (58.7%)  | 124.0 (41.3%)  | 49.0 (16.3%)  | 63.0 (21.0%)   | 81.0 (27.0%)   | 64.0 (21.3%)   | 28.0 (9.3%)   | 15.0 (5.0%)   |
| Egypt (N=300)        | 145.0 (48.3%)  | 155.0 (51.7%)  | 4.0 (1.3%)    | 69.0 (23.0%)   | 100.0 (33.3%)  | 85.0 (28.3%)   | 37.0 (12.3%)  | 5.0 (1.7%)    |
| Germany (N=300)      | 158.0 (52.7%)  | 142.0 (47.3%)  | 5.0 (1.7%)    | 19.0 (6.3%)    | 49.0 (16.3%)   | 66.0 (22.0%)   | 85.0 (28.3%)  | 76.0 (25.3%)  |
| Greece (N=300)       | 178.0 (59.3%)  | 122.0 (40.7%)  | 0.0 (0.0%)    | 6.0 (2.0%)     | 24.0 (8.0%)    | 44.0 (14.7%)   | 46.0 (15.3%)  | 180.0 (60.0%) |
| India (N=300)        | 143.0 (47.7%)  | 157.0 (52.3%)  | 26.0 (8.7%)   | 103.0 (34.3%)  | 89.0 (29.7%)   | 78.0 (26.0%)   | 4.0 (1.3%)    | 0.0 (0.0%)    |
| Jordan (N=300)       | 159.0 (53.0%)  | 141.0 (47.0%)  | 14.0 (4.7%)   | 85.0 (28.3%)   | 103.0 (34.3%)  | 65.0 (21.7%)   | 32.0 (10.7%)  | 1.0 (0.3%)    |
| Kazakhstan (N=300)   | 153.0 (51.0%)  | 147.0 (49.0%)  | 76.0 (25.3%)  | 134.0 (44.7%)  | 70.0 (23.3%)   | 18.0 (6.0%)    | 2.0 (0.7%)    | 0.0 (0.0%)    |
| Libya (N=300)        | 204.0 (68.0%)  | 96.0 (32.0%)   | 15.0 (5.0%)   | 60.0 (20.0%)   | 93.0 (31.0%)   | 68.0 (22.7%)   | 44.0 (14.7%)  | 20.0 (6.7%)   |
| Poland (N=300)       | 189.0 (63.0%)  | 111.0 (37.0%)  | 106.0 (35.3%) | 120.0 (40.0%)  | 35.0 (11.7%)   | 32.0 (10.7%)   | 7.0 (2.3%)    | 0.0 (0.0%)    |
| Portugal (N=300)     | 178.0 (59.3%)  | 122.0 (40.7%)  | 33.0 (11.0%)  | 104.0 (34.7%)  | 77.0 (25.7%)   | 47.0 (15.7%)   | 25.0 (8.3%)   | 14.0 (4.7%)   |
| Singapore (N=300)    | 133.0 (44.3%)  | 167.0 (55.7%)  | 8.0 (2.7%)    | 95.0 (31.7%)   | 45.0 (15.0%)   | 37.0 (12.3%)   | 61.0 (20.3%)  | 54.0 (18.0%)  |
| South Africa (N=300) | 177.0 (59.0%)  | 123.0 (41.0%)  | 33.0 (11.0%)  | 97.0 (32.3%)   | 63.0 (21.0%)   | 43.0 (14.3%)   | 32.0 (10.7%)  | 32.0 (10.7%)  |
| Syria (N=300)        | 164.0 (54.7%)  | 136.0 (45.3%)  | 43.0 (14.3%)  | 146.0 (48.7%)  | 85.0 (28.3%)   | 26.0 (8.7%)    | 0.0 (0.0%)    | 0.0 (0.0%)    |
| Turkey (N=300)       | 153.0 (51.0%)  | 147.0 (49.0%)  | 66.0 (22.0%)  | 75.0 (25.0%)   | 65.0 (21.7%)   | 61.0 (20.3%)   | 24.0 (8.0%)   | 9.0 (3.0%)    |
| USA (N=300)          | 160.0 (53.3%)  | 140.0 (46.7%)  | 3.0 (1.0%)    | 29.0 (9.7%)    | 37.0 (12.3%)   | 42.0 (14.0%)   | 74.0 (24.7%)  | 115.0 (38.3%) |
| Uzbekistan (N=300)   | 177.0 (59.0%)  | 123.0 (41.0%)  | 35.0 (11.7%)  | 84.0 (28.0%)   | 77.0 (25.7%)   | 48.0 (16.0%)   | 27.0 (9.0%)   | 29.0 (9.7%)   |
| Yemen (N=300)        | 182.0 (60.7%)  | 118.0 (39.3%)  | 77.0 (25.7%)  | 148.0 (49.3%)  | 55.0 (18.3%)   | 15.0 (5.0%)    | 3.0 (1.0%)    | 2.0 (0.7%)    |
| Total (N=6000)       | 3310.0 (55.2%) | 2690.0 (44.8%) | 645.0 (10.8%) | 1543.0 (25.7%) | 1359.0 (22.6%) | 1025.0 (17.1%) | 718.0 (12.0%) | 710.0 (11.8%) |

**Supplemental File 2.** Intra-reliability and Inter-reliability scores between two weeks interval evaluation performed by ten participants (30 randomly selected CBCT cases (corresponding to 60 mandibular first premolars))

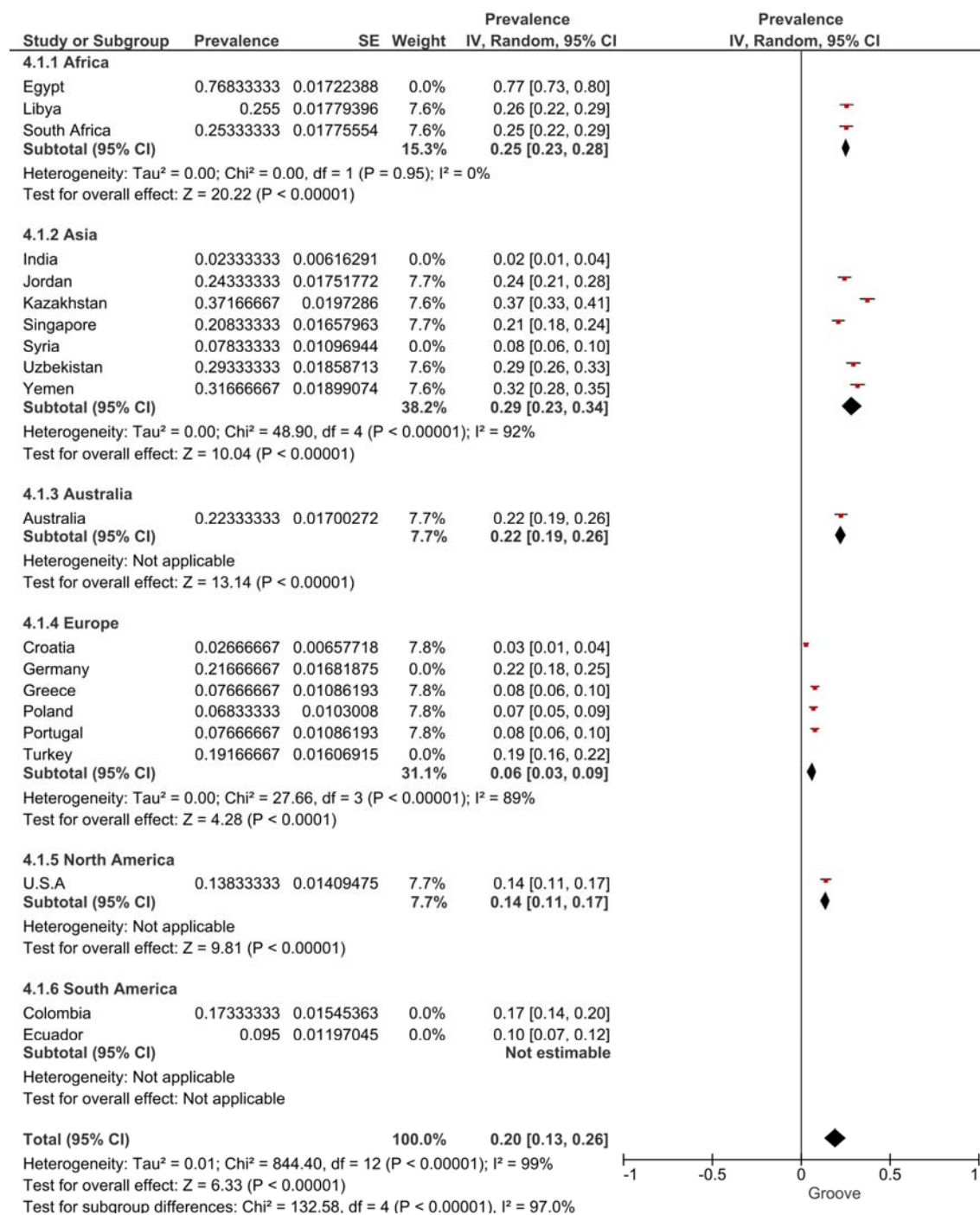
| Country                               | Intra-rater Reliability Kappa Scores |              |         |
|---------------------------------------|--------------------------------------|--------------|---------|
|                                       | Groove                               | Taurodontism | C Canal |
| Germany                               | 0.82                                 | 0.77         | 0.86    |
| Colombia                              | 0.70                                 | 0.73         | 0.67    |
| Ecuador                               | 0.78                                 | 0.80         | 0.75    |
| India                                 | 0.64                                 | 0.72         | 0.68    |
| Kazakhstan                            | 0.76                                 | 0.65         | 0.72    |
| Uzbekistan                            | 0.83                                 | 0.79         | 0.80    |
| Poland                                | 0.69                                 | 0.71         | 0.66    |
| Portugal                              | 0.82                                 | 0.74         | 0.78    |
| Singapore                             | 0.74                                 | 0.70         | 0.77    |
| Yemen                                 | 0.60                                 | 0.64         | 0.59    |
| Greece                                | 0.73                                 | 0.69         | 0.71    |
| Australia                             | 0.79                                 | 0.76         | 0.80    |
| Egypt                                 | 0.63                                 | 0.61         | 0.65    |
| Libya                                 | 0.68                                 | 0.66         | 0.7     |
| Croatia                               | 0.77                                 | 0.73         | 0.74    |
| United States                         | 0.85                                 | 0.82         | 0.87    |
| South Africa                          | 0.66                                 | 0.67         | 0.68    |
| Syria                                 | 0.80                                 | 0.75         | 0.79    |
| Jordan                                | 0.72                                 | 0.68         | 0.70    |
| Turkey                                | 0.74                                 | 0.71         | 0.76    |
| <b>Inter-rater reliability scores</b> | 0.76                                 | 0.72         | 0.78    |

<sup>1</sup> Cohen suggested the Kappa result be interpreted as follows: values  $\leq 0$  as indicating no agreement and  $0.01 < k < 0.20$  as none to slight,  $0.20 < k < 0.40$  as fair,  $0.40 < k < 0.60$  as moderate,  $0.60 < k < 0.80$  as substantial, and  $0.80 < k < 1.00$  as almost perfect agreement.

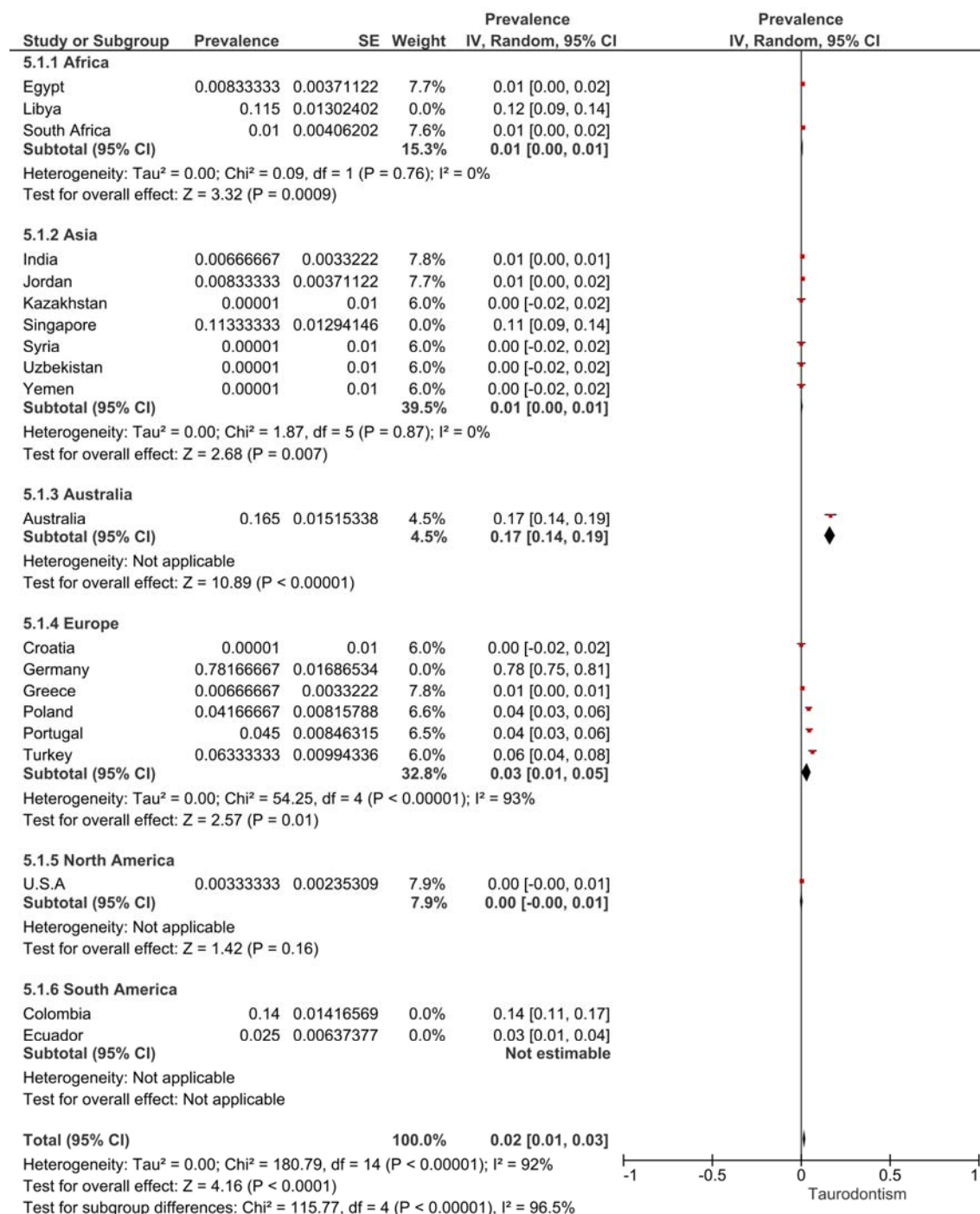
**Supplemental File 3. Sensitivity analysis of the prevalence of C Canal**



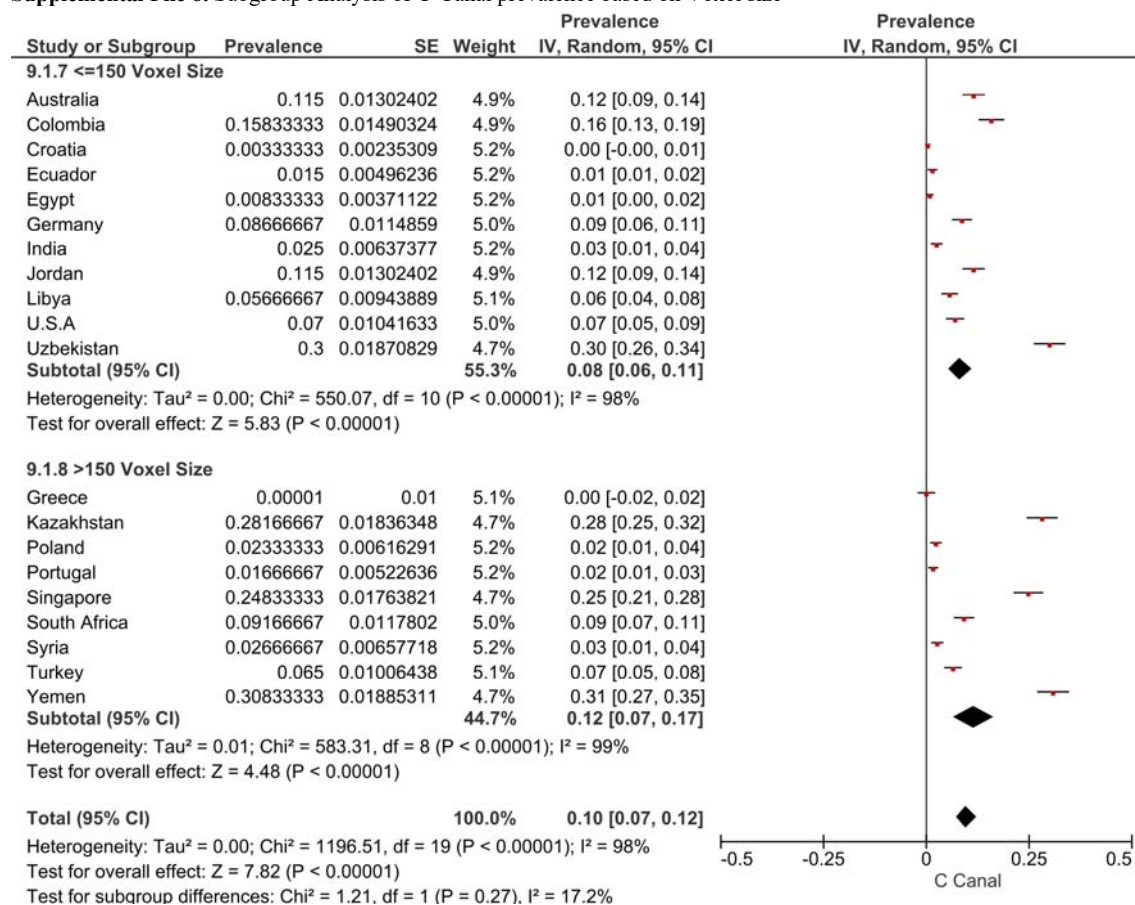
**Supplemental File 4.** Sensitivity analysis of the prevalence of Groove



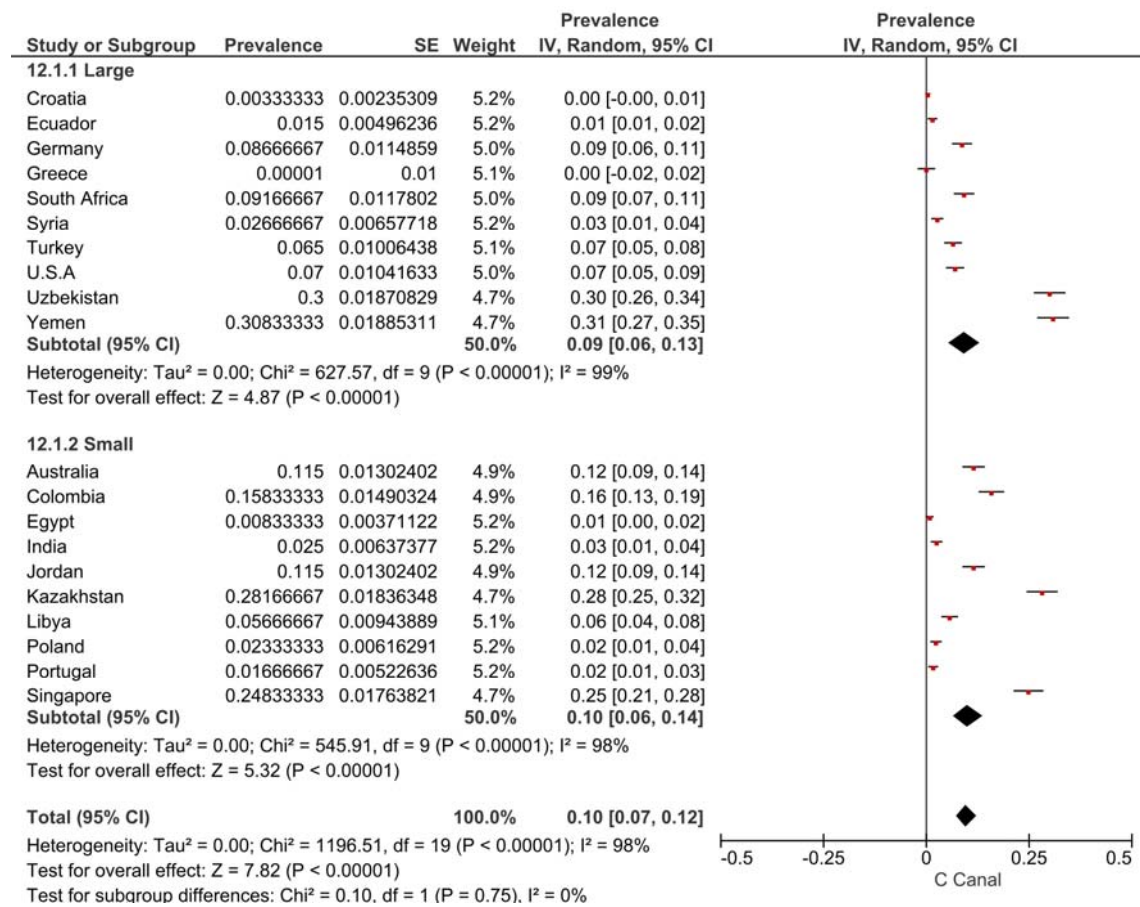
**Supplemental File 5.** Sensitivity analysis of the prevalence of Taurodontism



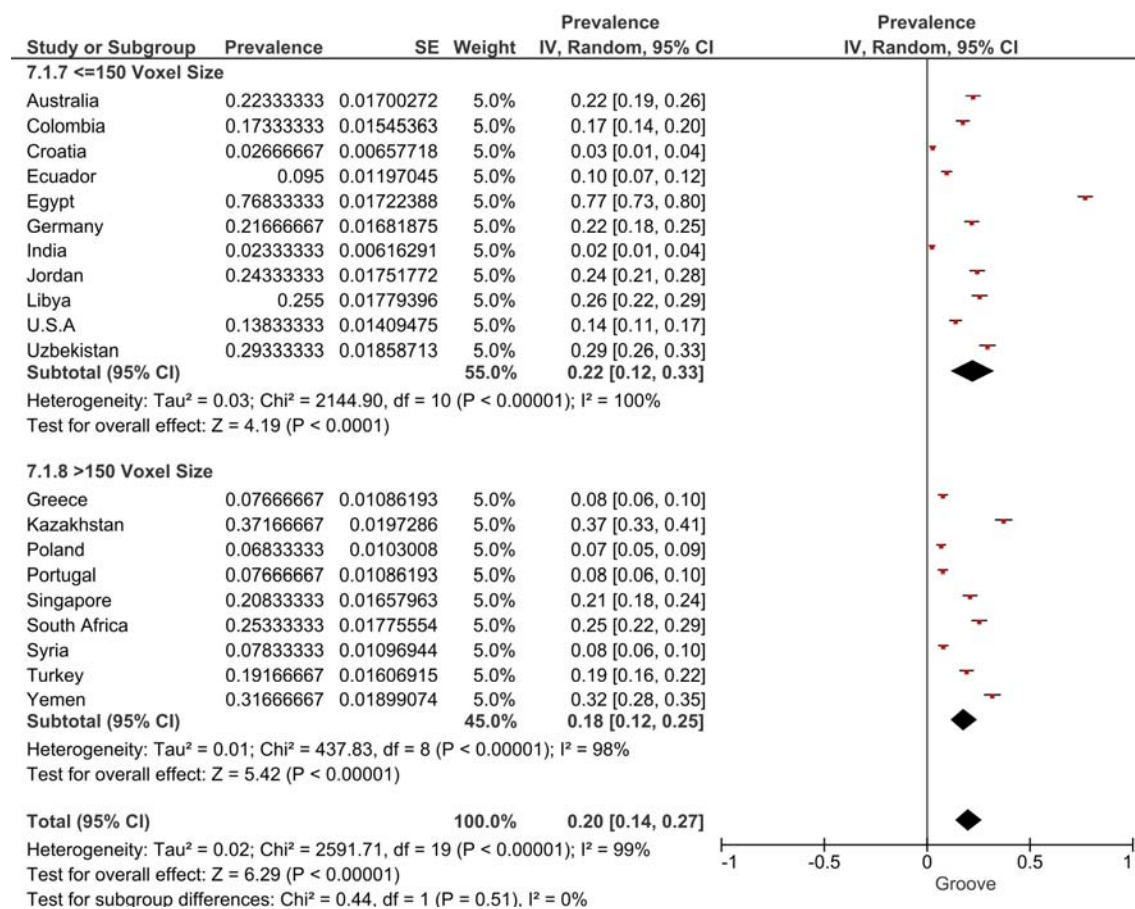
**Supplemental File 6. Subgroup Analysis of C-Canal prevalence based on Voxel size**



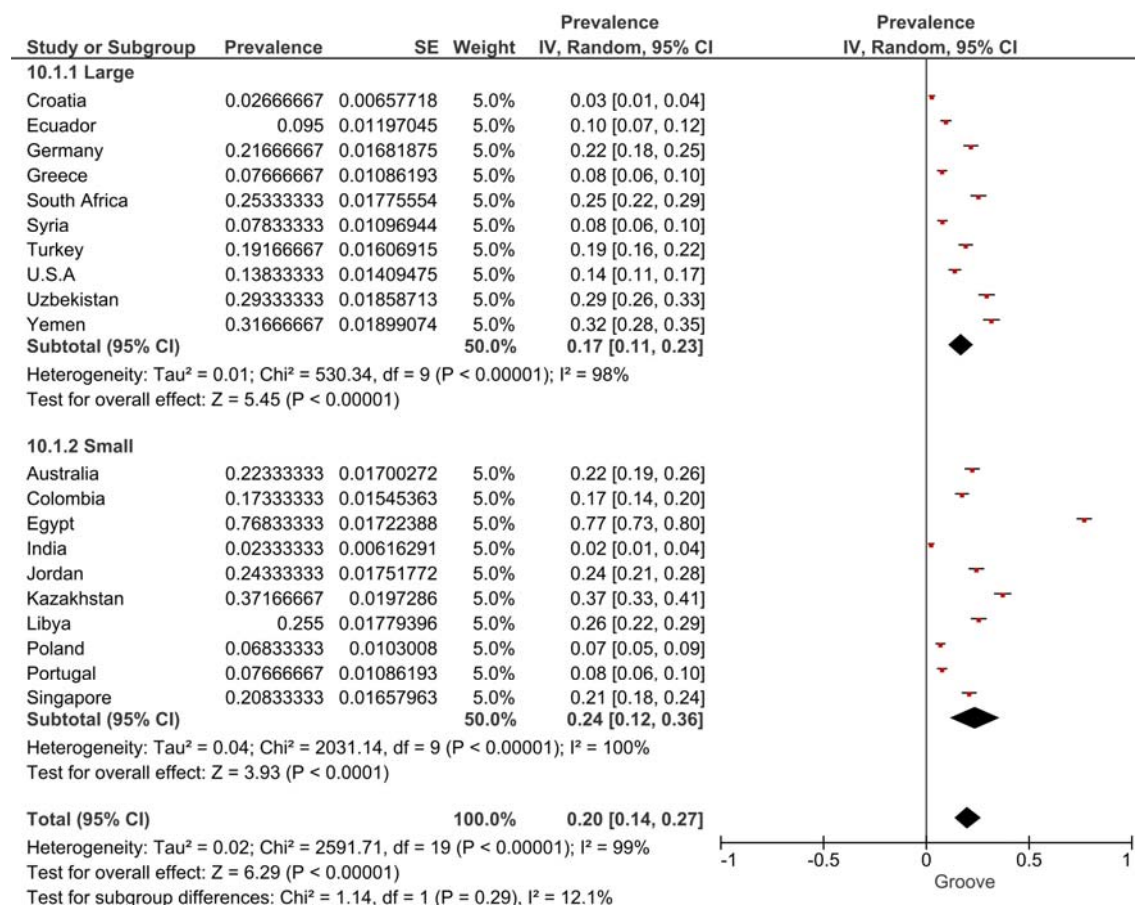
**Supplemental File 7. Subgroup Analysis of C-Canal prevalence based on field of view (FOV)**



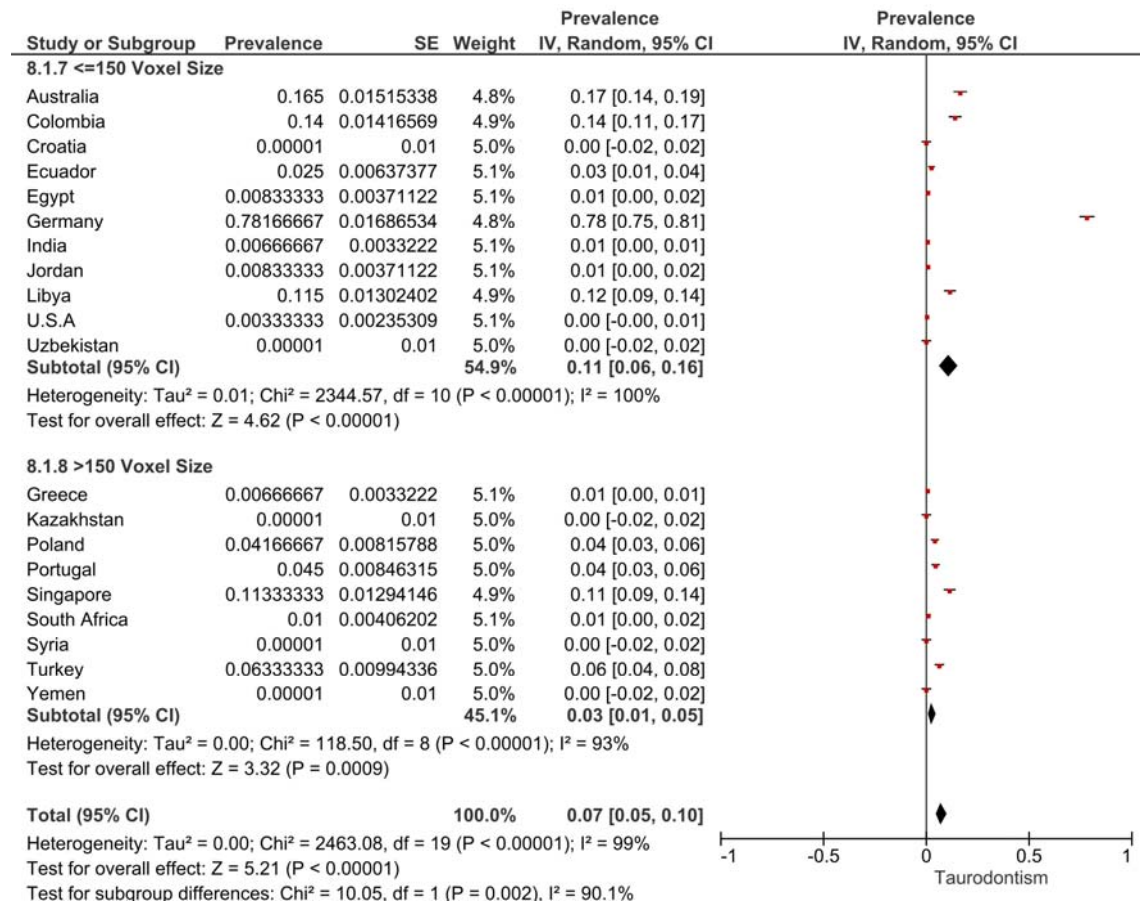
**Supplemental File 8.** Subgroup Analysis of Groove prevalence based on Voxel size



**Supplemental File 9.** Subgroup Analysis of Groove prevalence based on field of view (FOV)



**Supplemental File 10.** Subgroup Analysis of taurodontism prevalence based on Voxel size



**Supplemental File 11.** Subgroup Analysis of taurodontism prevalence based on field of view (FOV)

