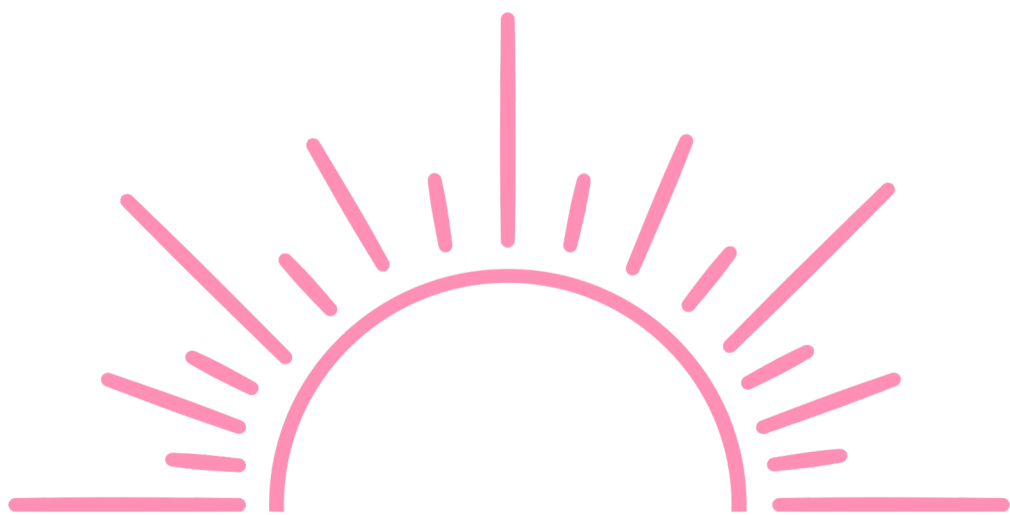


## **PART 4**

### **NODE 2: ARRIVAL**





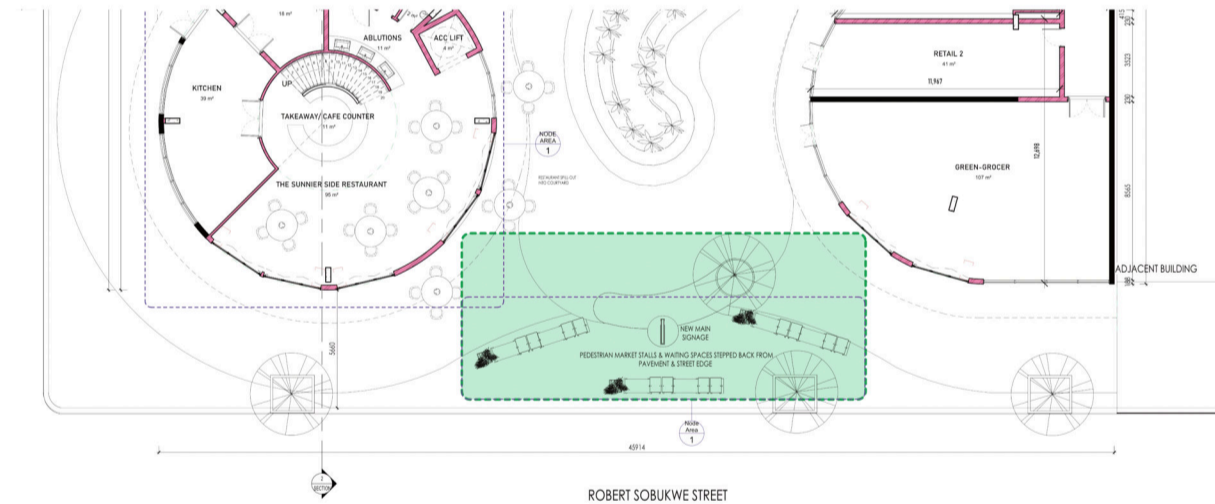
- Simpler design
- Singular Shape
- Cleaned Brickwork allows space for Seating

**PROPOSED EXTERIOR SIGNGAGE**



- Non-adjustable shelving
- Crowding sidewalk
- Lack of seating

**EXISTING EXTERIOR BUILDING SIGNGAGE**

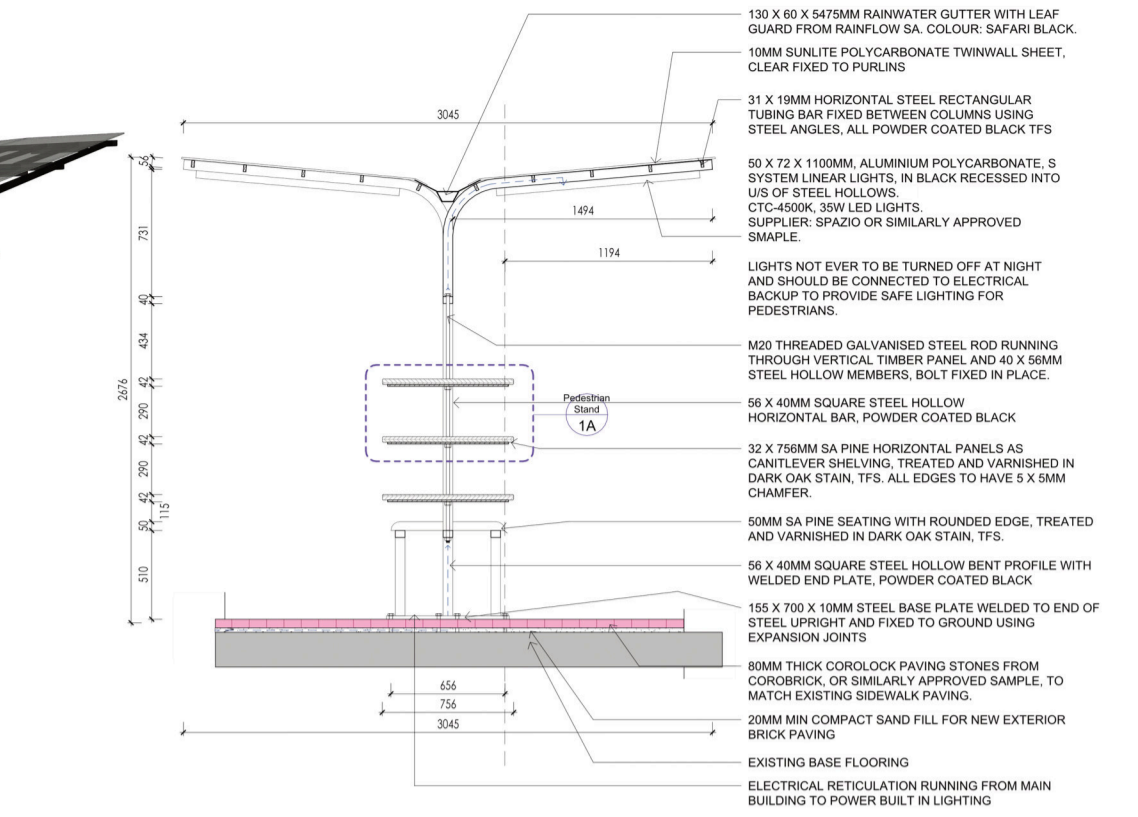


GROUND FLOOR KEY PLAN (NTS)

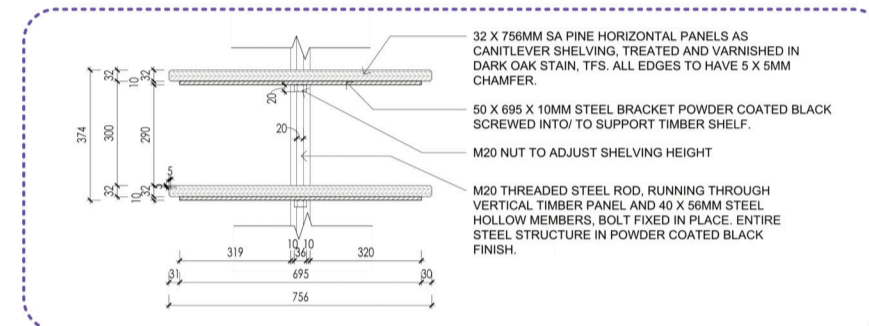
**NODE 2 - ARRIVAL | NEW PEDESTRIAN & VENDOR STANDS AND NEW MAIN BUILDING SIGNGAGE**



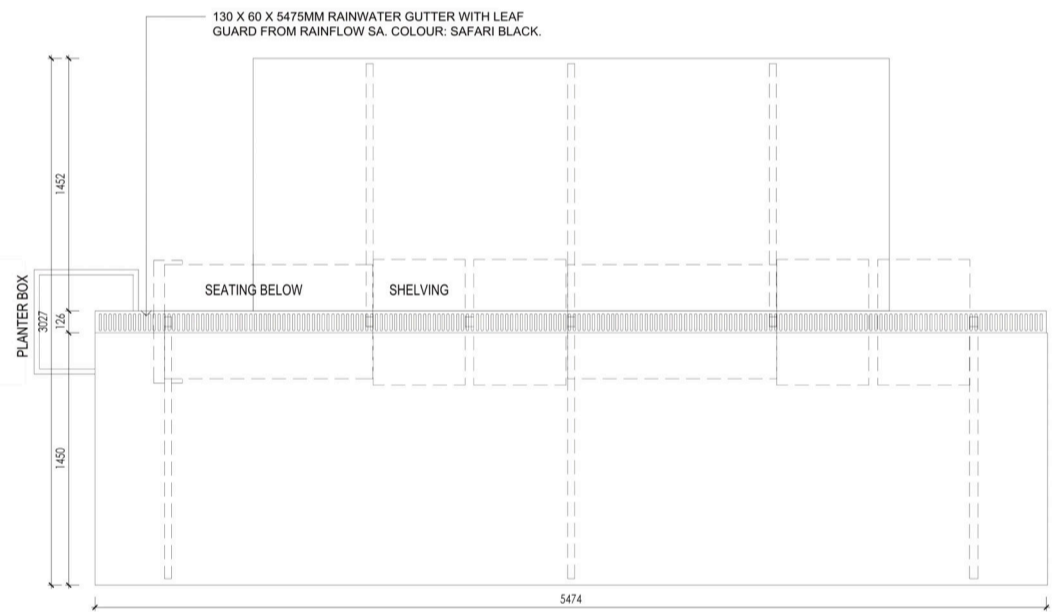
new vendor and pedestrian stands stepped back from pavement walkway



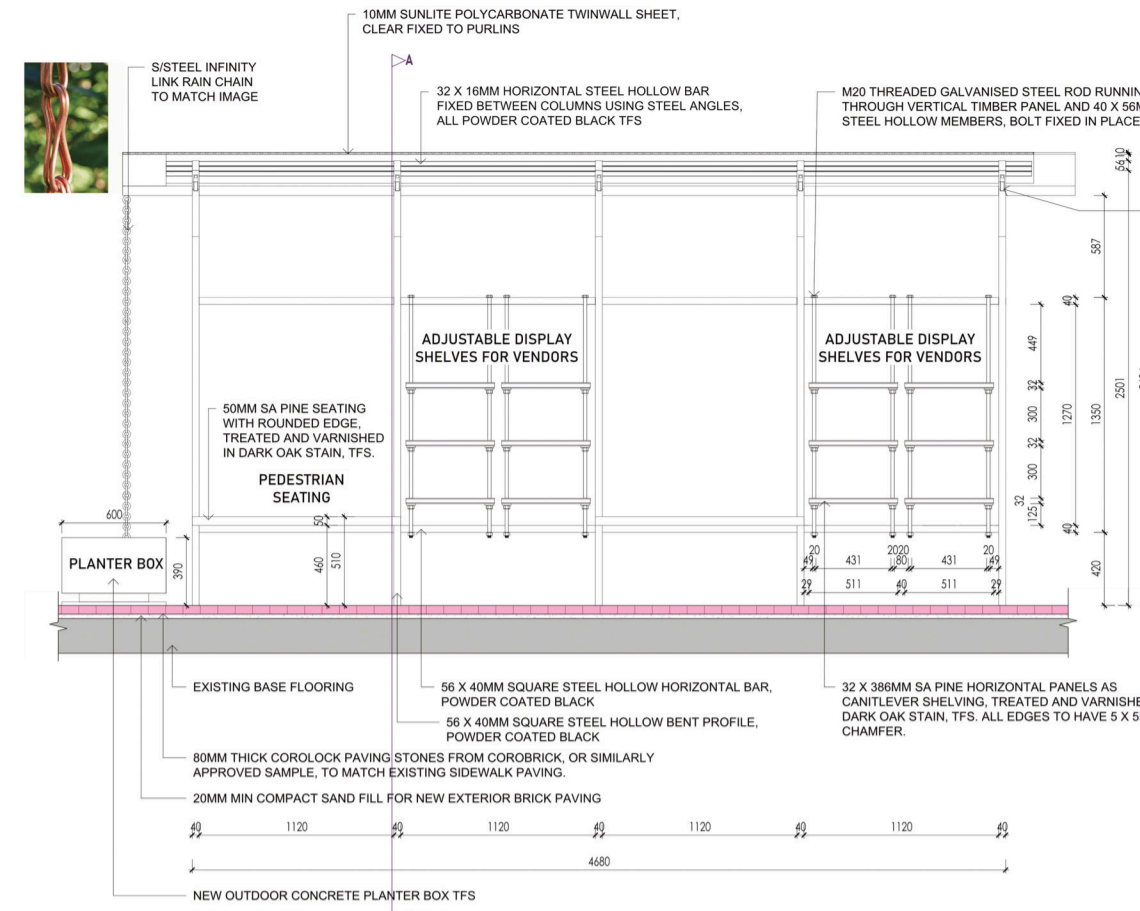
DETAIL 1 | 1:20 SECTION A-A THROUGH PEDESTRIAN STAND



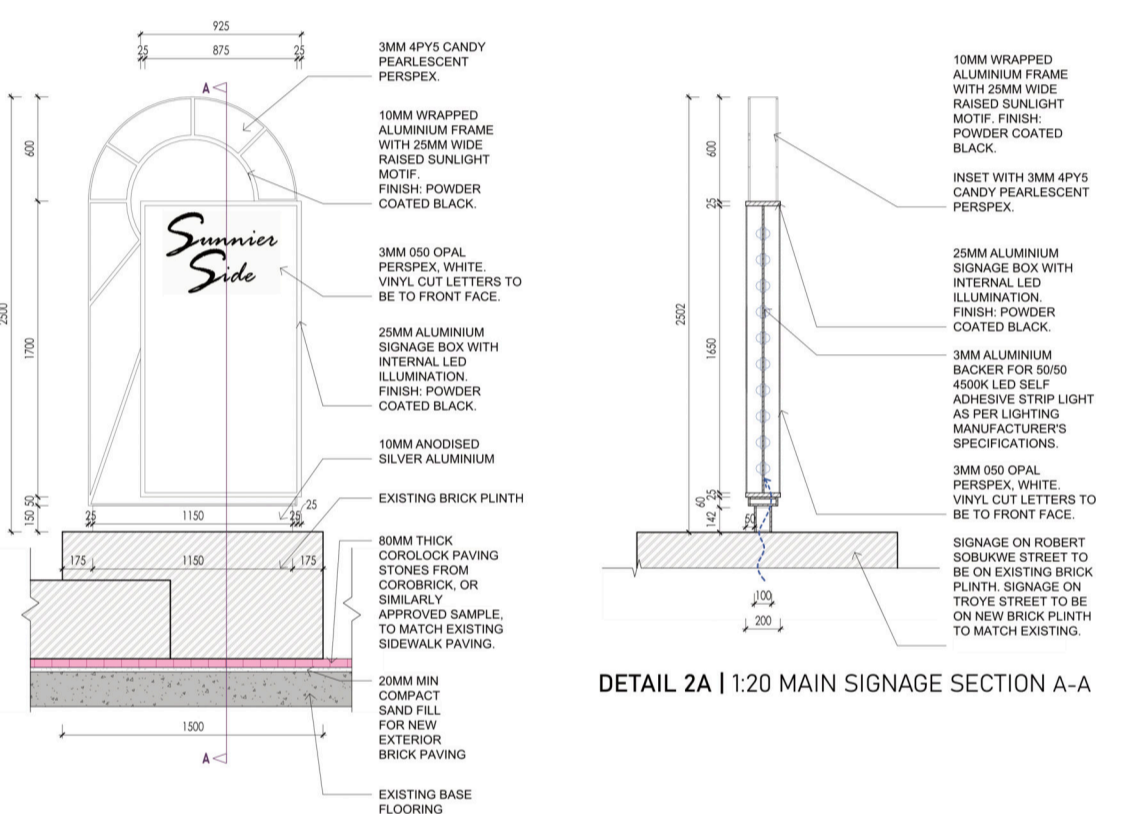
DETAIL 1A | 1:5 SECTIONAL DETAIL THROUGH ADJUSTABLE SHELF



DETAIL 1C | 1:20 PLAN OF PEDESTRIAN STAND



DETAIL 1B | 1:20 ELEVATION OF PEDESTRIAN STAND



DETAIL 2A | 1:20 MAIN SIGNAGE ELEVATION

**KEY ICON SELECTION**

**PUBLIC SPACE & GENERAL**

- CLOTHING RETAIL
- RESTAURANT
- GREEN-GROCER
- LIBRARY
- SUN-ROOM (HOUSING)
- HEALTH CLINIC
- COUNSEL ROOM
- GROUP COUNSEL ROOMS
- PROCEDURE ROOM
- CONSULTATION ROOM
- TOILETS
- RECEPTION
- GARDENS

**CIRCULATION**

- LIFT
- STAIRCASES

**EXIT & SAFETY SIGNS**

AS PER SANS & SABS REGULATIONS

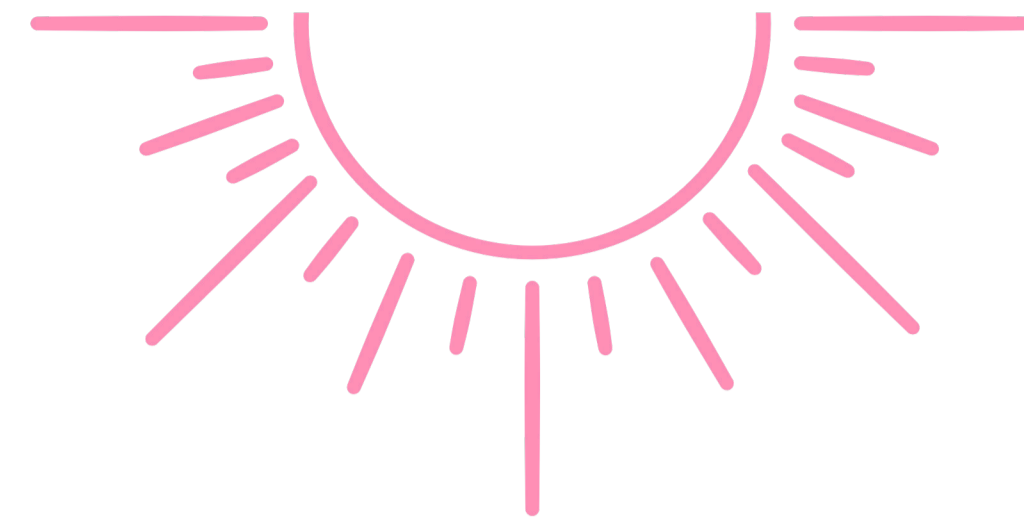
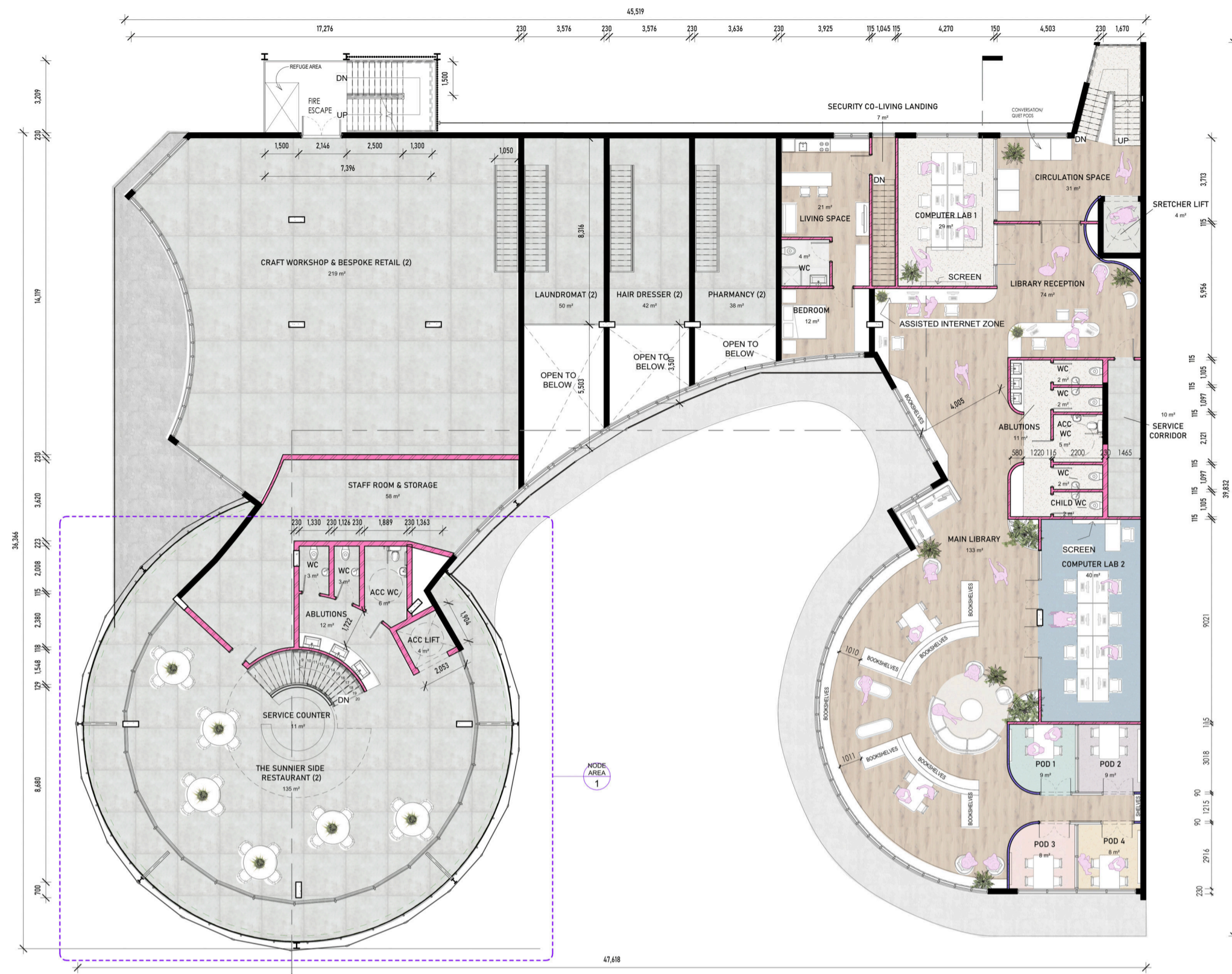
**PHOTOLUMINESCENT FIRE AND DIRECTIONAL SIGNAGE**



entering re-designed courtyard from robert sobukwe street (west)



entering re-designed courtyard from robert sobukwe street (east)



## PART 5

# NODE 3: WELCOMING, NODE 4: SUPPORT & HEALTHCARE CLINIC & REFLECTION

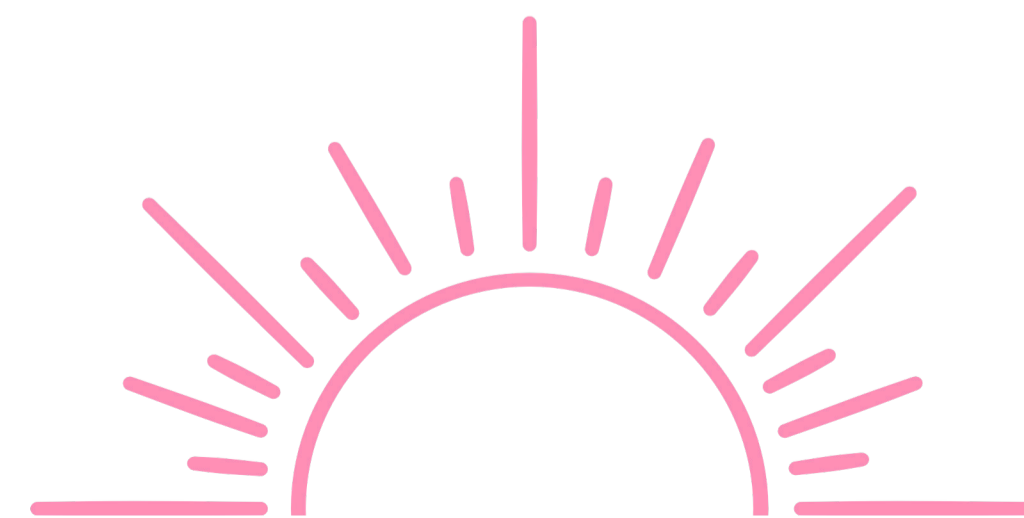
FLOOR 2 | 1:100 MEZZANINE LEVEL PLAN

**STRATEGIES**

- wayfinding
- sensory boundaries
- community ownership
- good lighting
- clear sightlines
- soothing work spaces



MEZZANINE FLOOR | LIBRARY DESIGN GUIDELINES

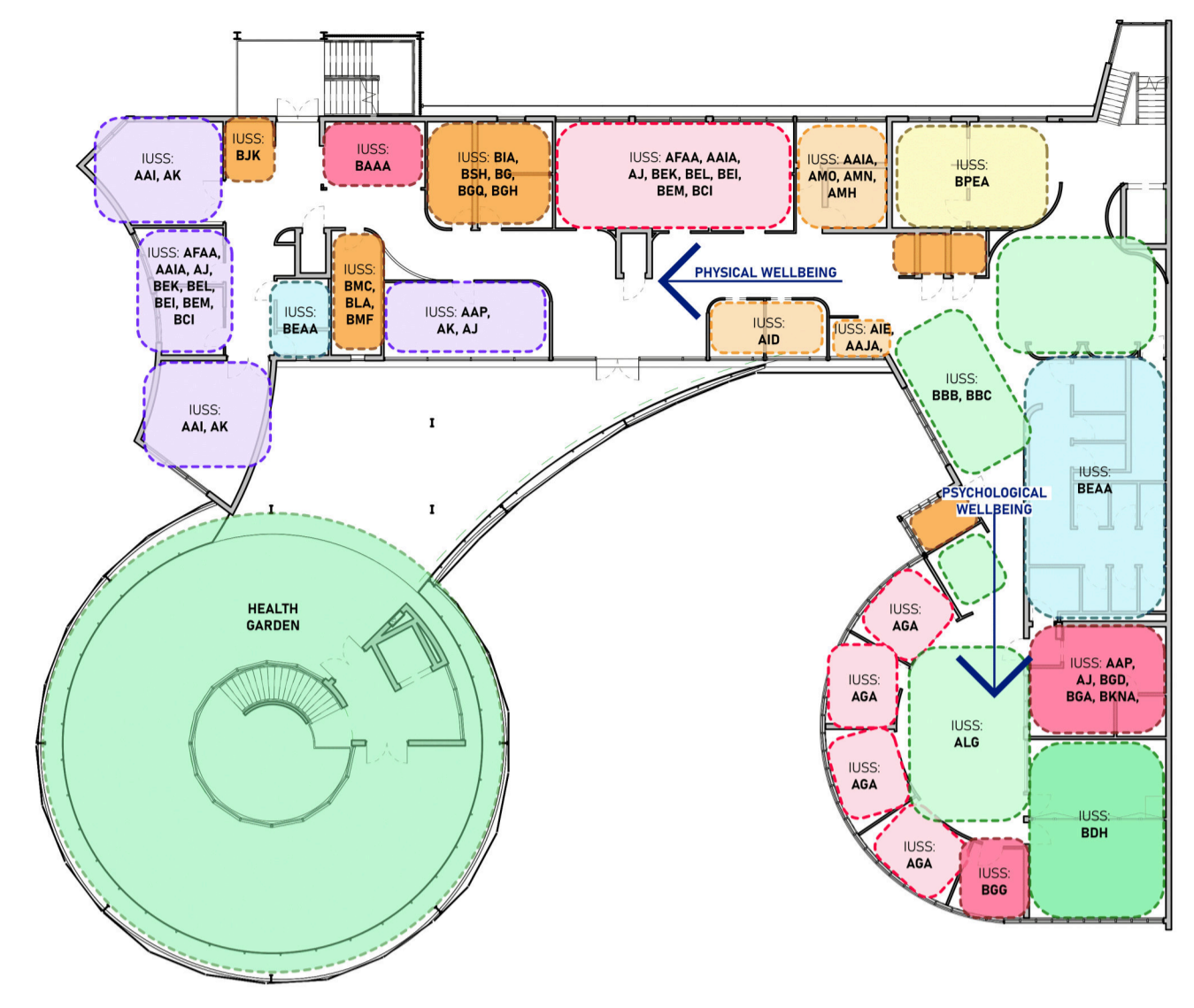
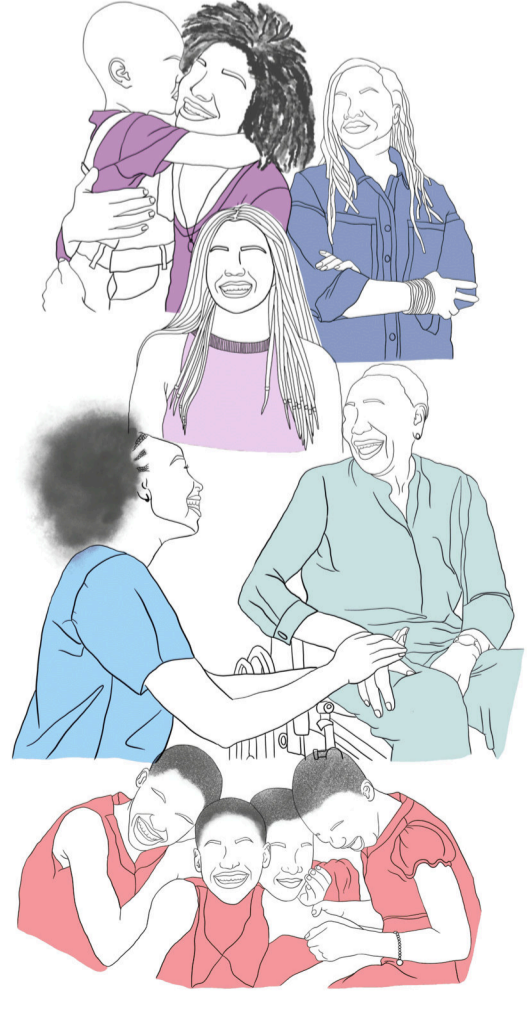


# the Summer Side

## WOMEN'S HEALTH CLINIC

### IUSS HEALTHCARE FACILITY ROOM LIST FOR PRIMARY HEALTH CARE (PHC)

CHC Maternity - Assessment	AAIA
CHC Maternity - Delivery room	AAI
CHC Functional space: neonatal	AAP
PHC Consulting room, standard	AFAA
PHC Counselling room	AGA
PHC Office (type 1/2)	
CHC Radiology - view & report room	AMO
CHC Radiology - processing (not necessary for digital e--rays)	AMN
CHC Radiology room - general	AMH
PHC Multi-purpose room	BDH
PHC Procedure room	AK
PHC Functional space: bay	BEK
PHC Functional space: bed	BEL
PHC Functional space: clinical wash basin	BEI
PHC Functional space: consulting couch	BEM
PHC Functional space: work stations	BCI
PHC Functional space: nurse station	BAAA
PHC Dirty utility	BMC
PHC Clean utility	BIA
PHC Cleaners room	BLA
PHC Admission counter	BBB
PHC Vitals room - adults	AID
PHC Help desk	BBC
PHC Store - linen	BSH
PHC Sluice room	BMF
PHC Sputum collection cubicle - external	AIE
PHC PHC direct observation room (vitals)	AAJA
PHC Treatment room	AJ
PHC Waste-disposal and storage	BGK
PHC Office (type 2/2)	BCA
PHC Pharmacy clinic dispensary	BPEA
PHC Records room and archives	BGD
PHC Functional space: lockers	BGA
PHC Staff room and lockers	BKNA
PHC Store - general	BG
CHC Store - sterile surgical	BGQ
PHC Store - equipment	BGH
PHC Toilets	BEAAA
PHC Waiting areas	
PHC Sub-waiting areas	
PHC Play area	ALG



- administrative spaces
- consulting rooms
- vitals, blood works and physical exams
- storage and cleaning
- pharmaceutical dispensary
- waiting, reception and play spaces
- multi-purpose space (primarily educational)
- ablutions
- procedure and treatment rooms

### SPACE PLANNING

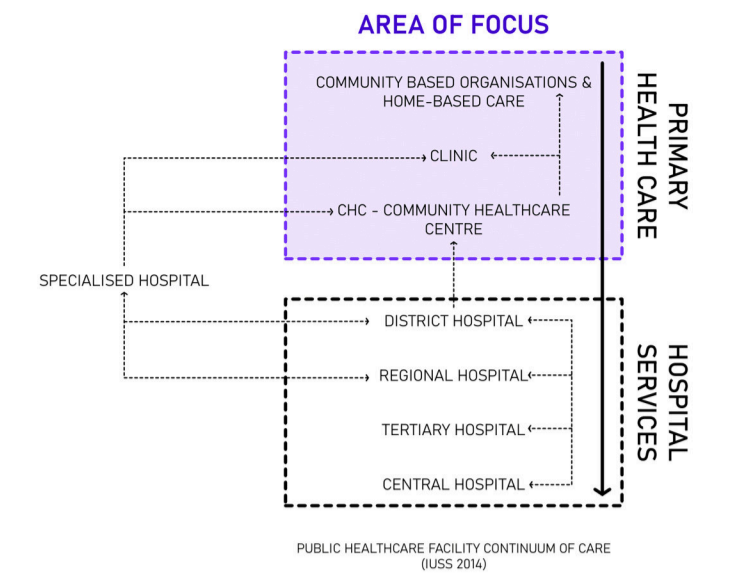
<span style="color: #e91e63;">■</span> R4-A1-3 PLEASING PINK	<span style="color: #004d40;">■</span> G4-E1-1 MOUNT EVEREST
<span style="color: #f48fb1;">■</span> R4-A2-2 BLOOMING PERFECT	<span style="color: #c8e6c9;">■</span> G1-C2-3 DESERT SPRING
<span style="color: #fce4ec;">■</span> 97 MOON ROSE	<span style="color: #c8e6c9;">■</span> G7-C2-3 WEST COAST MIST
<span style="color: #ffe0b2;">■</span> 07-A2-1 BROADWAY LIGHTS	<span style="color: #c8e6c9;">■</span> GR-Y06 ORCH-ID BAY
<span style="color: #fff9c4;">■</span> Y4-A2-1 NANAQUA DAISY	
<span style="color: #fff9c4;">■</span> Y4-A2-3 LEMON MIST	

glazing of various opacities



### LOOK & FEEL

## HEALTHCARE | INFRASTRUCTURE UNIT SUPPORT SYSTEM (IUSS) AND DESIGN GUIDELINES



### SERVICE PROVISION

**CHRONIC SERVICES FOR:**

- Non-communicable diseases
- Mental Health Services
- HIV and tuberculosis, and other communicable diseases

**ACUTE SERVICES FOR MINOR AILMENTS & EMERGENCIES FOR:**

- Adults
- Children (Integrated management of childhood illness)
- Clinical forensic (violence and injuries)
- Preventive and Promotive Care
- Sexual Reproductive Health

**FOR MATERNAL WOMEN AND CHILD HEALTHCARE INCLUSIVE OF:**

- Immunisation
- Maternity services for uncomplicated pregnancies
- Antenatal care
- Post-natal care

**ADDITIONAL SPECIALISED SERVICES:**

- Speech and hearing services
- Social services
- Nutrition Services

### SERVICE PROVISION

**FLOOR FINISHES**

-  NEW EXTERIOR 5450 X135 X 25.4MM INFINITY IS, GROOVED POLYMER COMPOSITE DECKING BOARDS FROM EVA-LAST FIXED TO FASCIA BOARDS ON TOP OF SLAB USING HULK HALO CLIP & CLIP SCREWS WITH JOIST SPACING 450MM CENTRE TO CENTRE. COLOUR: TIGER COVE
-  NEW 230 X 1500MM GLUE DOWN LVT PLANKS WITH SEAMLESS JOINS FROM GERFLOR. RANGE: VIRTUO 55. COLOUR: 1455 DAINTREE HONEY
-  NEW 20ML X 2000MM MULTILAYER COMPACT FLOORING WITH SEAMLESS JOINS FROM GERFLOR. RANGE: TARALAY IMPRESSION HOP COMMERCIAL COMPACT. COLOUR: 1060 TERRAZZO NAPOLI
-  NEW TILE FLOOR FINISH IN 800 X 800 X 8MM SKYLINE GREY ECOTEC SLIP RESISTANT GLAZED PORCELAIN TILE FROM CTM
-  NEW 2M X 2M X 2 MM HOMOGENEOUS EASYCARE GLUE DOWN FLOORING FROM GERFLOR. RANGE: MIPLAM ATLAS. COLOUR: 6004 CREAMY WHITE.
-  NEW 2M X 2M X 2 MM HOMOGENEOUS EASYCARE GLUE DOWN FLOORING FROM GERFLOR. RANGE: MIPLAM ATLAS. COLOUR: 6006 SPRING GREEN.
-  NEW 2M X 2M X 2 MM HOMOGENEOUS EASYCARE GLUE DOWN FLOORING FROM GERFLOR. RANGE: MIPLAM ATLAS. COLOUR: 0158 PACIFIC BLUE/0160 SKY BLUE.
-  NEW 2M X 2M X 2 MM HOMOGENEOUS EASYCARE GLUE DOWN FLOORING FROM GERFLOR. RANGE: MIPLAM ATLAS. COLOUR: 0154 LAVENDER.
-  NEW 2M X 2M X 2 MM HOMOGENEOUS EASYCARE GLUE DOWN FLOORING FROM GERFLOR. RANGE: MIPLAM ATLAS. COLOUR: 0161 SKIN PINK.
-  NEW 2M X 2M X 2 MM HOMOGENEOUS EASYCARE GLUE DOWN FLOORING FROM GERFLOR. RANGE: MIPLAM ATLAS. COLOUR: 6014 PRIMROSE.
-  NEW 2M X 2M X 2 MM HOMOGENEOUS EASYCARE GLUE DOWN FLOORING FROM GERFLOR. RANGE: MIPLAM ATLAS. COLOUR: 6013 APRICOT.
-  CLEAR EPOXY SEALED CONCRETE FLOORS.

**WALL LEGEND**

-  NEW 75MM SHOPFRONT ALUMINIUM FRAME WITH RIBBED 8MM TOUGHENED GLASS INFILL GLASS PARTITION WALL PLASTERED AND FINISHED TFS
-  NEW 90MM DRYWALL PARTITION WALL PLASTERED AND FINISHED TFS
-  NEW 115MM BRICK WALL PLASTERED AND FINISHED TFS
-  NEW 230MM BRICK WALL PLASTERED AND FINISHED TFS
-  EXISTING 115MM BRICK WALL
-  EXISTING 230MM BRICK WALL

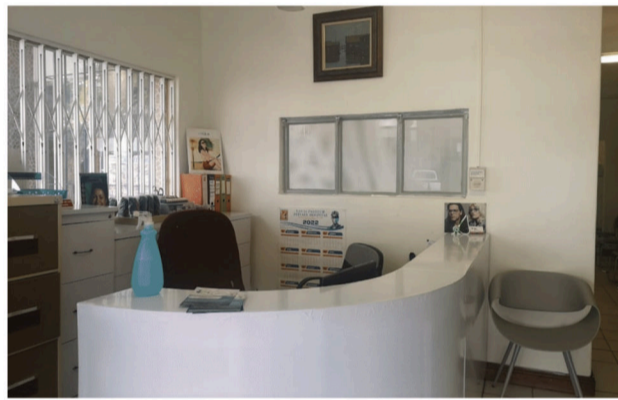
**FLOOR 3**  
1:50 HEALTH CLINIC PLAN



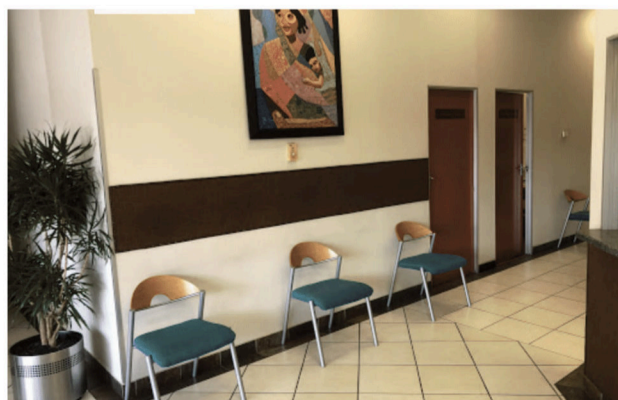
EXISTING NATIONAL HEALTHCARE IN SOUTH AFRICA & SAFE SPACES IN SUNNYSIDE



TYPICAL RECEPTIONS



TYPICAL WAITING SPACES



PROPOSED HEALTHCARE FACILITY IN SUNNYSIDE



GROUND FLOOR RECEPTION

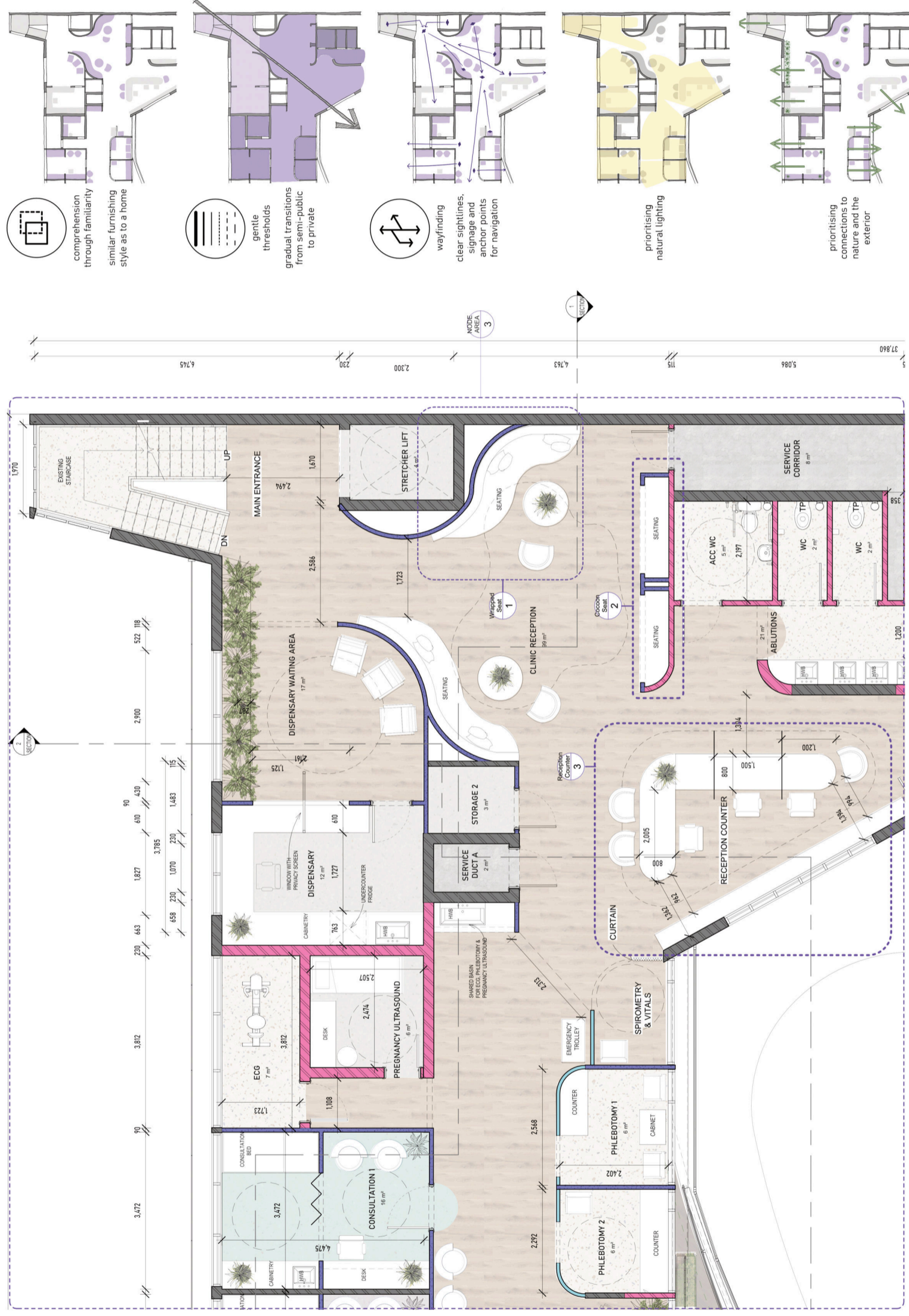


HEALTH CLINIC WAITING SPACE

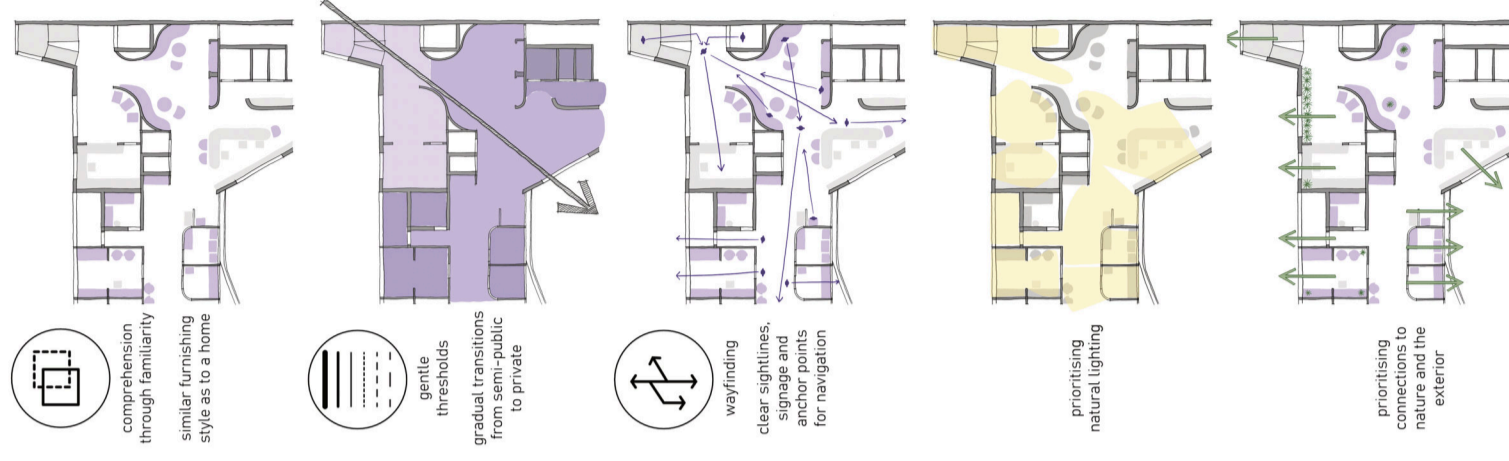


HEALTH CLINIC RECEPTION

- blank -



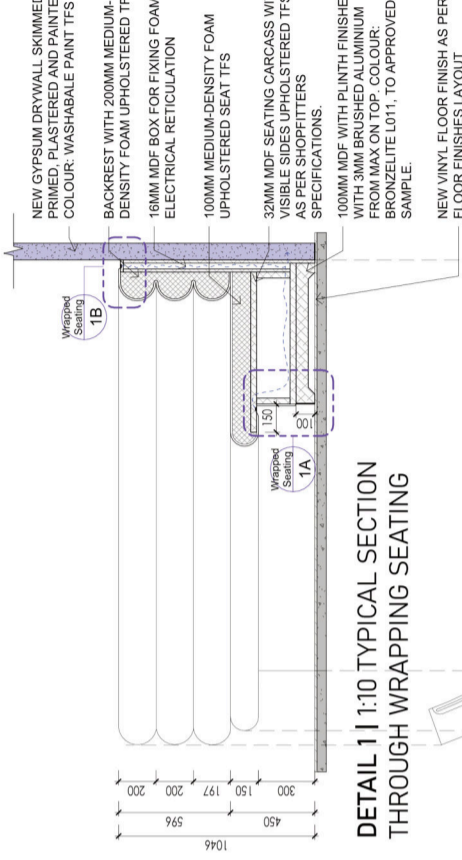
1:50 FOCUS PLAN OF FLOOR TWO NODE AREA 3



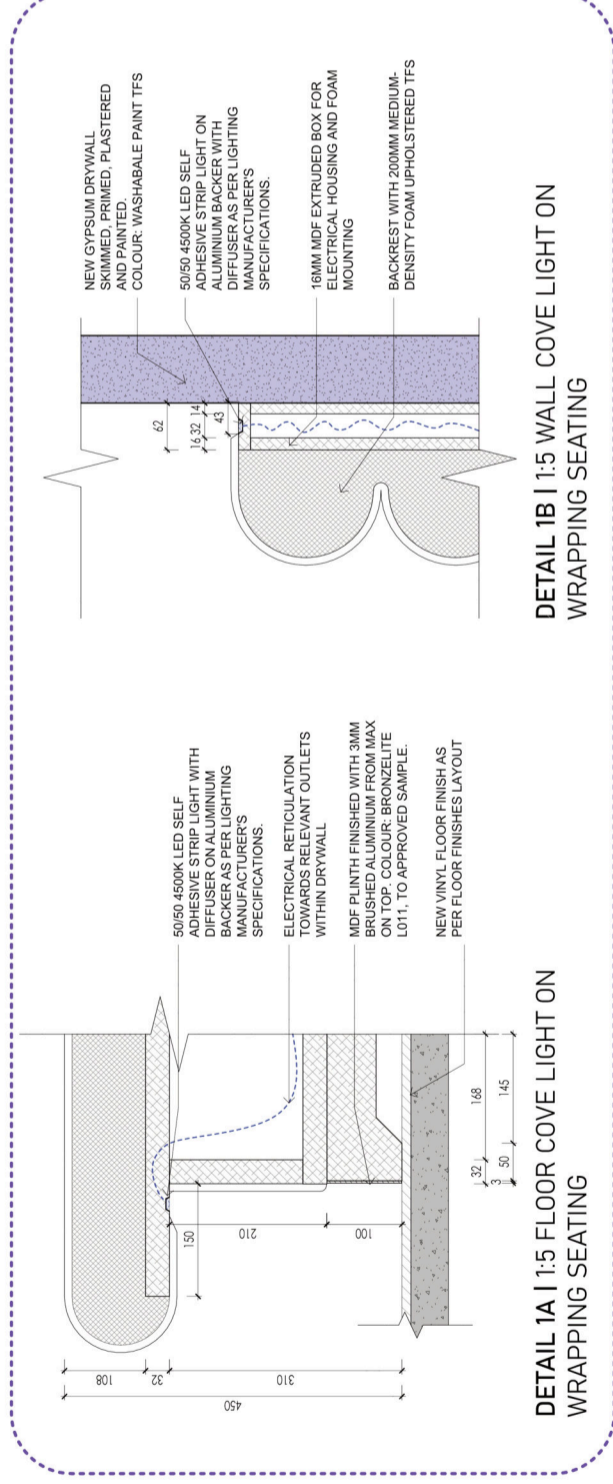
DESIGN STRATEGIES



RENDERED PERSPECTIVE OF WRAPPED SEATING



DETAIL 1 | 1:10 TYPICAL SECTION THROUGH WRAPPING SEATING



DETAIL 1A | 1:15 FLOOR COVE LIGHT ON WRAPPING SEATING

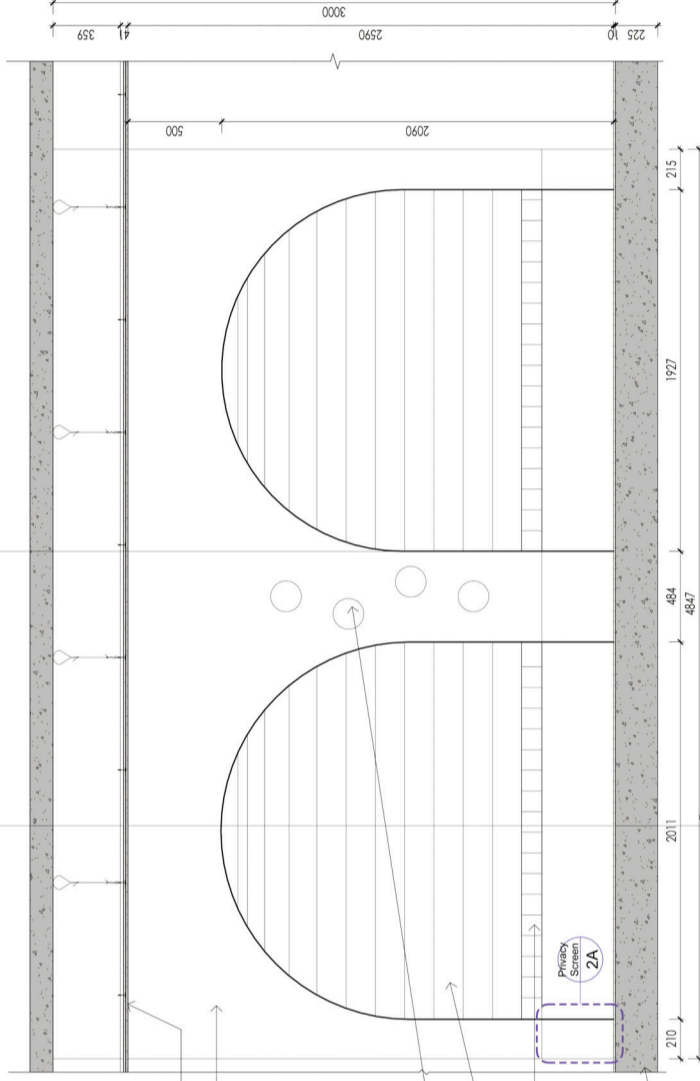
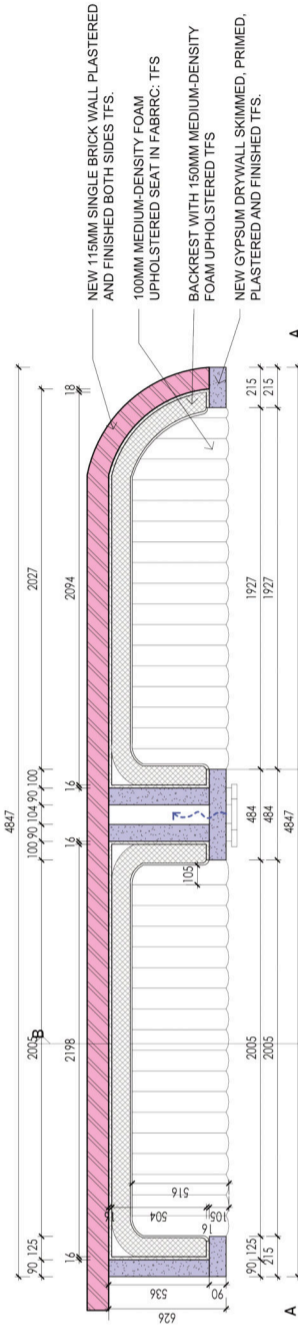
DETAIL 1B | 1:15 WALL COVE LIGHT ON WRAPPING SEATING



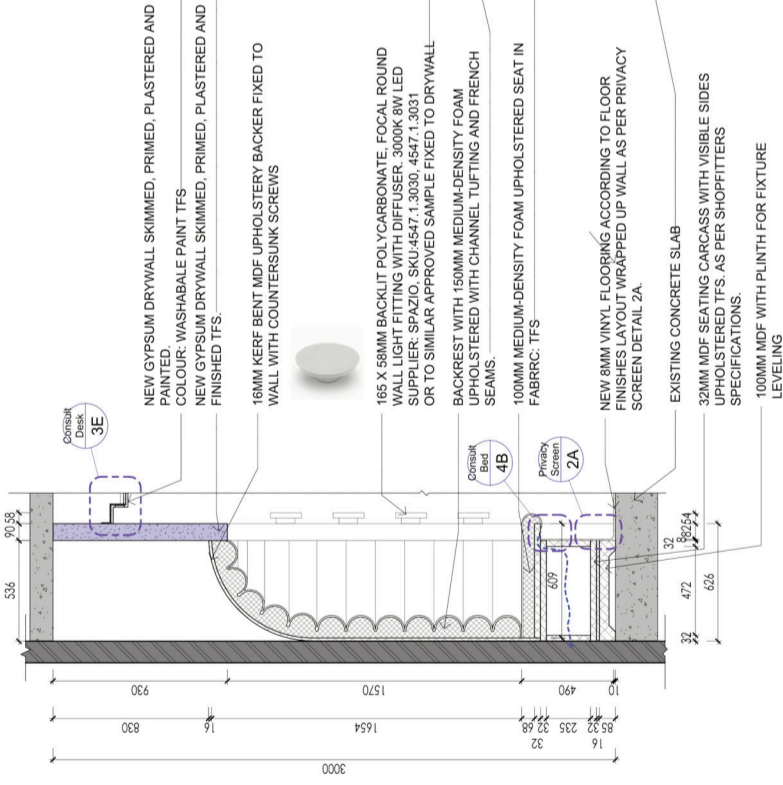
RENDERED PERSPECTIVE OF COCOON CHAIR

DETAIL 1 | 1:10 TYPICAL PLAN OF WRAPPING SEATING

DETAIL 2A | 1:10 SECTIONAL PLAN OF COCOON SEAT



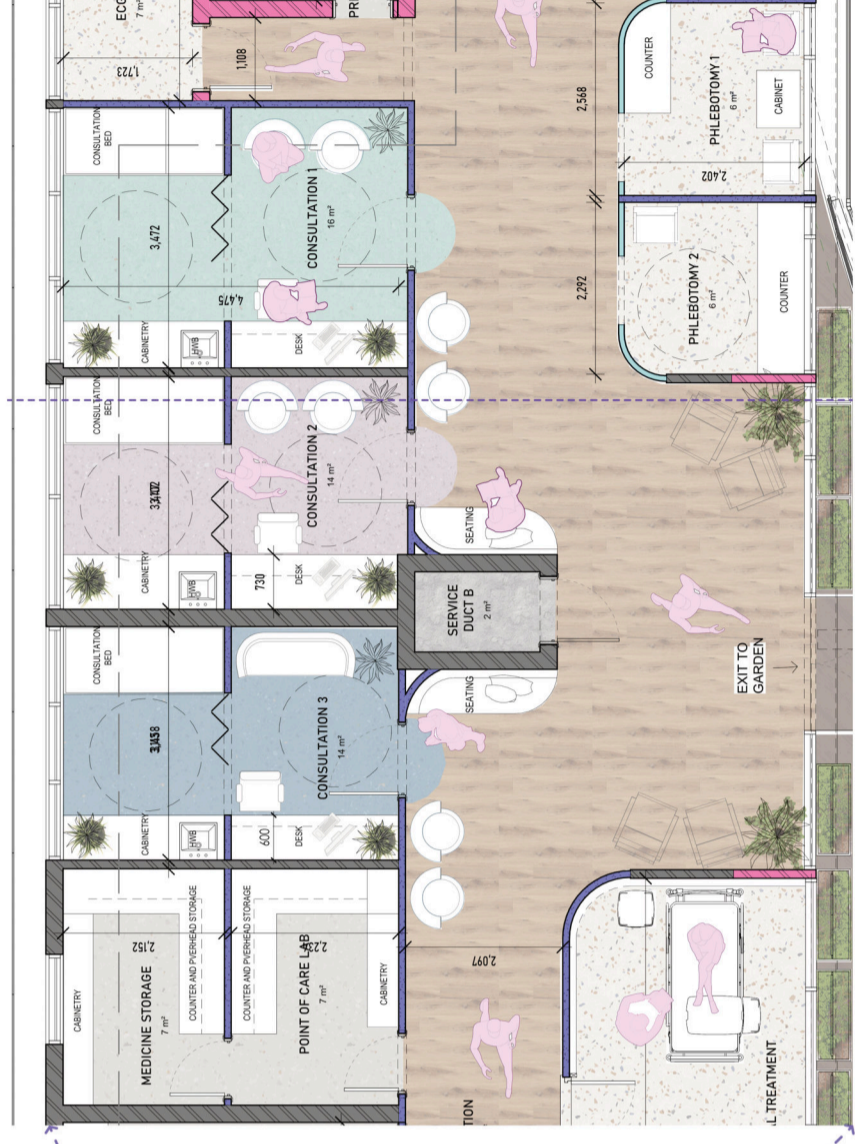
DETAIL 2B | 1:10 ELEVATION A-A OF COCOON SEAT



DETAIL 2C | 1:10 SECTION B-B THROUGH COCOON SEAT

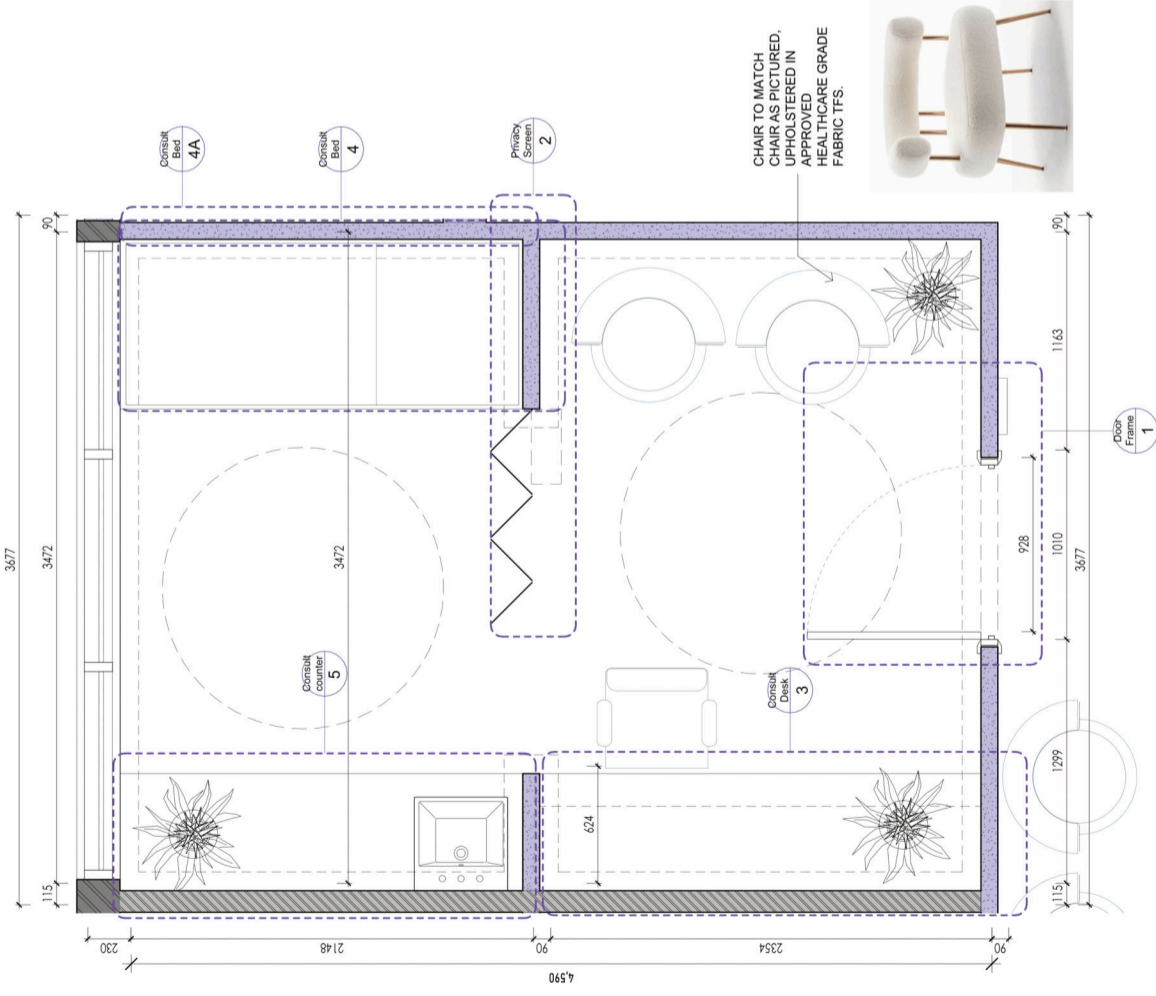
NODE 3 - WELCOMING | RECEPTION AND WAITING AREA



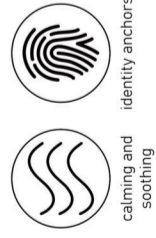


NODE 4 | 1:50 AREA OF CONSULTATION ROOMS

FLOOR TWO - HEALTH CLINIC | KEY PLAN (INTS)

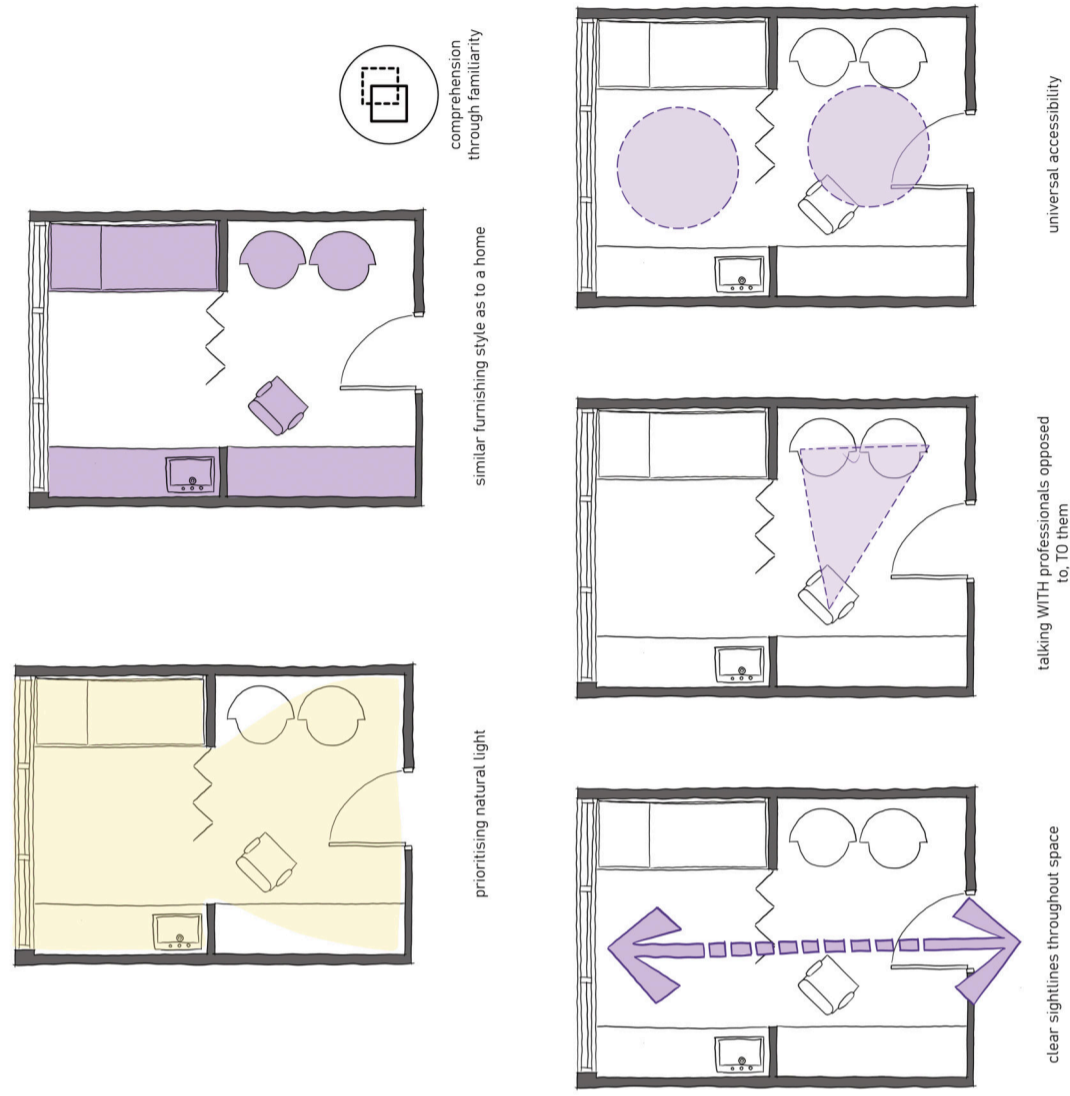
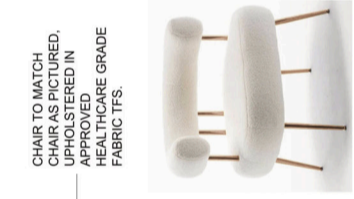


NODE 4 | 1:20 CONSULTATION ROOM TYPICAL LAYOUT



calming and soothing

identity anchors



prioritising natural light

clear sightlines throughout space

taking WITH professional opposed to TO them

similar furnishing style as to a home

universal accessibility

comprehension through familiarity

DESIGN STRATEGIES



ROOM 1 | GREEN

ROOM 1 | PURPLE

ROOM 1 | BLUE



symbol:

Image	specification	supplier	characteristics	Image	specification	supplier	characteristics
	2M X 20M X 2 MM HOMOGENEOUS EASYCARE GLUE LOW FLOORING RANGE: HIPOLAN ATLAS COLOUR: 6006-SPRING GREEN		MAT FINISH WITH VIBRANT COLOURS. NON-DIRECTIONAL DESIGN. EASY MAINTENANCE. NO WAX FOR LIFE, & RESISTANCE. PR-SLIP RESISTANCE AND BR-PI FIRE RATING. RECYCLABLE. COLOUR: 0169-BASIC BLUE / 0160-SKY BLUE.		2M X 20M X 2 MM HOMOGENEOUS EASYCARE GLUE LOW FLOORING RANGE: HIPOLAN ATLAS COLOUR: 0164-LAVENDER	GERFLOR SOUTH AFRICA	HIGH DURABILITY. NON-POROUS MATERIAL ALLOWING AND DISINFECTING. RESISTANCE TO MOISTURE AND STAINING. WIDE RANGE OF COLOURS. ALLERGEN-FREE AND RADIANT.
	2-16MM THICK INTERIOR COMPACT HP LAMINATE COLOURS: WISTERIA.		COST EFFECTIVE. HIGH SCRATCH AND ABRASION RESISTANCE. WEAR AND TEAR OF ENVIRONMENTS. NON-POROUS SURFACES. CLEAN AND MOISTURE RESISTANT. RESISTANT TO HARSH CLEANING AGENTS. DISINFECTANTS. HEALTHCARE WITH ANTI-MICROBIAL CONTAINERS/ADDITIVES.		2-16MM THICK INTERIOR COMPACT HP LAMINATE COLOURS: WISTERIA.		LOW VOC. ECO-BASED SOLVENT WITH LOW-ODOR. PATIENTS WITH SENSITIVITIES. HARD WEARING. DURABLE AND WASHABLE. MAINTAINS COLOUR INTEGRITY OVER TIME.
	2-16MM THICK INTERIOR COMPACT HP LAMINATE COLOURS: OCEAN MELODY.		MAX ON TOP. SOUTH AFRICA		2-16MM THICK INTERIOR COMPACT HP LAMINATE COLOURS: OCEAN MELODY.		PLASCON PAINTS. SOUTH AFRICA
	UPHOLSTERY		1370 X 0.6MM REAL TOUCH LEATHER. COLOUR: PURPLE UP339-4.		1370 X 0.6MM PLAIN VINYL. COLOUR: UP679-21.		1370 X 0.6MM PLAIN VINYL. COLOUR: UP679-22.
	STEPLADDER PAINT		1370 X 1.2MM REAL TOUCH LEATHER. COLOUR: PURPLE UP339-4.		1370 X 0.6MM PLAIN VINYL. COLOUR: UP679-21.		1370 X 0.6MM PLAIN VINYL. COLOUR: UP679-22.

SPECIFIC FINISHES SCHEDULE

NODE 4 - SUPPORT | PRIVATE CONSULTATION ROOMS

KEY ICON SELECTION

**HEALTH CLINIC**

HEALTH CLINIC, COUNSEL ROOM, GROUP COUNSEL ROOMS, PROCEDURE ROOM, CONSULTATION ROOM, TOILETS, RECEPTION, GARDENS

**CIRCULATION**

LIFT, STAIRCASES, EXIT & SAFETY SIGNS AS PER SANS & SABS REGULATIONS

**PHOTOLUMINESCENT FIRE AND DIRECTIONAL SIGNAGE**

ELECTRICAL LEGEND

LOW COST ENERGY SAVING DOWNLIGHTER, 25W, 100°-FOUR, 1200 300MM CIRCULAR, WHITE

LED STRIP LIGHT INSIDE LIGHTING COVE 14.4W/LM, 120°/10MM LED'S/M, 120° -95 WHITE CRI, R9 -97, 4000K, 1100 LUMENS/M, CODE F -5M03528-95

LED STRIP LIGHT INSIDE DESK JOINERY 14.4W/LM, 120°/10MM LED'S/M, 120° -95 WHITE CRI, R9 -97, 4000K, 1100 LUMENS/M, CODE F -5M03528-95

16 AMPERE 5-PIN SWITCHED DOUBLE PLUG OUTLET @ HEIGHT FROM FFL TFS

DOUBLE LEVEL 1 WAY LIGHT SWITCH COLOUR WHITE BRAND VETI OR SIMILAR APPROVED SAMPLE

SINGLE LEVEL 1 WAY LIGHT SWITCH COLOUR WHITE BRAND VETI OR SIMILAR APPROVED SAMPLE

ELECTRICAL WIRING AS PER ELECTRICIANS SPECIFICATIONS

FLUSH PLASTERED GYPSUM CEILING WITH COVE LIGHTING DETAIL CONSULT DESK 3E

LED STRIP INSIDE OPEN WHITE DOWNLIGHTERS / AS PER DETAILS GROUP 3

1:20 CONSULTATION ROOM TYPICAL LAYOUT ELECTRICAL LAYOUT

**DETAIL 1 | 1:10 TYPICAL ELEVATION OF CONSULTATION ROOM ENTRANCE**

8MM TEMPERED, LOW IRON MIRAGE GLASS WITH 10MM SPACER, BRUSHED SUPPLIER: NATHAN ALLAN GLASS STUDIOS OR SIMILAR APPROVED SAMPLE

3MM ALUMINIUM BACKER FOR 5000 4000K LED SELF DIMMING LIGHTING MANUFACTURERS SPECIFICATIONS.

250 X 18 X 200MM MDF FRENCH CLEAT FIXED TO NEW DRYWALL

3MM 050 OPAL PERSPEX WHITE PERSPEX TO BE APPLIED TO FRONT FACE

3D PRINTED LETTER CASING ILLUMINATED

ROOM IDENTIFICATION SYMBOL AS PER APPROVED PLAN

53 X 50MM BRUSHED STEEL ROUND KNURLED KNOB ON ROSE FROM HANDLES INC. COLOUR TO MATCH BRONZELITE L011 FROM MAX ON TOP. SKU: CH54. OR SIMILAR APPROVED SAMPLE

100 X 3MM BRUSHED ALUMINIUM KICKPLATE TO MATCH COLOUR. COLOUR TO MATCH MAX ON TOP. OR SIMILAR APPROVED SAMPLE

1:10 TYPICAL SECTION THROUGH WALL-MOUNTED SIGNAGE

**DETAIL 1 | 1:10 TYPICAL SECTIONAL PLAN THROUGH DOOR OF CONSULTATION ROOM**

8MM TEMPERED, LOW IRON MIRAGE GLASS WITH 10MM SPACER, BRUSHED SUPPLIER: NATHAN ALLAN GLASS STUDIOS OR SIMILAR APPROVED SAMPLE

SINGLE LEAF DOOR FINISHED IN 2 COLOURS TO MATCH APPROVED SAMPLE

APPROVED COLOURS: R4A-2 BLOOMING PERFECT PLASCOR R4A-2 BLOOMING PERFECT PLASCOR 14-AZ-1 NAMAQUA DASY PLASCOR

53 X 50MM BRUSHED STEEL ROUND KNURLED KNOB ON ROSE FROM HANDLES INC. COLOUR TO MATCH BRONZELITE L011 FROM MAX ON TOP. SKU: CH54. OR SIMILAR APPROVED SAMPLE

STEEL DOOR FRAME FINISHED TO MATCH WALL

DETAIL 1 | 1:10 TYPICAL SECTIONAL PLAN THROUGH DOOR OF CONSULTATION ROOM

**DETAIL 2A | 1:2 TYPICAL WRAPPED VINYL FLOOR & WALL TRIM FINISH**

6MM RING-LITE GYPSOC SKIMMING PLASTER OF NEW DRYWALL

8MM VINYL TRIM COLOUR TO MATCH WALLPAPER. AVAILABLE WHITE WALLPAPER SKU: RDY32. SUPPLIER: WALLPAPER INN. <https://wallpaperinn.co.za/products/cheese-paintable/>

8MM ALUMINIUM STRAIGHT EDGE FROM KIRK MARKETING COLOUR: GOLD TFS

8MM VINYL FLOORING ACCORDING TO FLOOR FINISHES LAYOUT. EXISTING CONCRETE SLAB

**DETAIL 2 | 1:10 TYPICAL PLAN OF PRIVACY SCREENS**

PRIVACY PARTITION: 390 X 2000 X 18MM TIMBER FRAME, ON CASTORS WITH 3MM PLEXIGLASS INLAY.

NOTE: SIZE OF SCREEN VARIES PER ROOM. SEE PLAN.

12.5MM GYPSUM BOARD SKIMMED, PRIMED, PLASTERED AND FINISHED WITH WALLPAPER. COLOUR: TO MATCH CHELSEA PRINTABLE WALLPAPER. SUPPLIER: WALLPAPER INN. <https://wallpaperinn.co.za/products/cheese-paintable/>

WALLPAPER TO HAVE WASHABLE PROTECTIVE COATING APPLIED.

64MM MINERAL WOOL INSULATION PERPENDICULAR TO OTHER DRYWALL

64MM DRYWALL STUDS FIXED @600 CTC

95 X 50 X 3MM STEEL END PLATE FIXED TO WALL FOR HINGE FIXING. FINISHED TO MATCH BRONZELITE L011 FROM MAX ON TOP.

**DETAIL 2 | 1:10 TYPICAL ELEVATION OF PRIVACY SCREENS**

NEW DRYWALL PARTITIONING FINISHED WITH WALLPAPER. COLOUR: TO MATCH CHELSEA PRINTABLE WALLPAPER. SUPPLIER: WALLPAPER INN. <https://wallpaperinn.co.za/products/cheese-paintable/>

WALLPAPER TO HAVE WASHABLE PROTECTIVE COATING APPLIED.

PRIVACY PARTITIONS TO BE INSTALLED USING BRUSHED STEEL FULL LENGTH FLUSH PIANO HINGES. HINGES TO MATCH BRONZELITE L011 FROM MAX ON TOP.

95MM DEEP 60MM TIMBER FRAME WITH 50MM HORIZONTAL BRACE AND 50MM RAISED EDGES.

364 X 3 X 800MM PLEXIGLASS INLAYS. COLOUR: FROST WHITE (WH25 SC). PLEXIGLASS SUPPLIER: SA ARGUS LASER SUPPLIERS <https://saarguslaser.co.za/products/2mm-frost-white-single-side-wh25-sc-1000x800mm>

PERSPEX TO HAVE WHITE VINYL STICKERS OF VARIOUS PATTERNS TFS, TO DIFFERENTIATE BETWEEN ROOMS.

30 X 24 X 3MM SMALL CASTOR WHEEL FROM BOT SHOP (WWW.BOTSHOP.CO.ZA) OR SIMILARLY APPROVED SAMPLE

NEW VINYL FLOOR FINISH AS PER FLOOR FINISHES LAYOUT

DETAIL 2 | 1:10 TYPICAL ELEVATION OF PRIVACY SCREENS

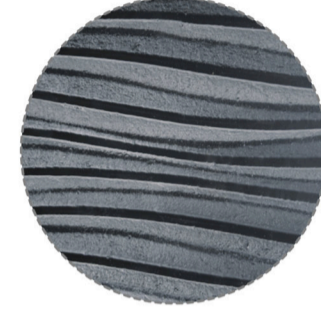
NODE 4 - SUPPORT | ELECTRICAL, DETAIL 1 ENTRANCE & DETAIL 2 PRIVACY SCREEN



AVONITE SOLID SURFACING  
COLOUR: AVALANCHE 7502  
SUPPLIER: MAX ON TOP



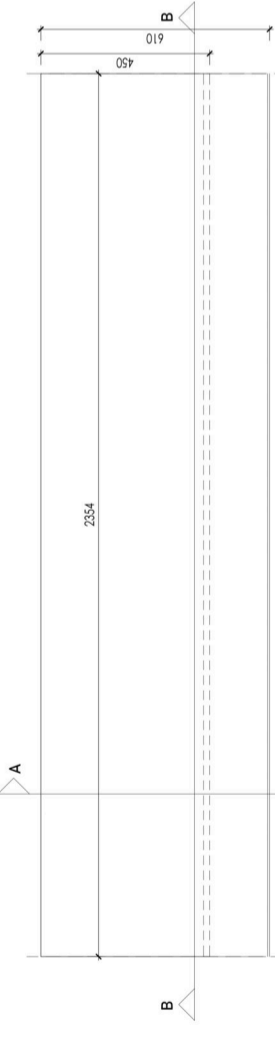
HIGH PRESSURE LAMINATE  
COLOUR: OLMO MERCURIO 4539  
SUPPLIER: MAX ON TOP



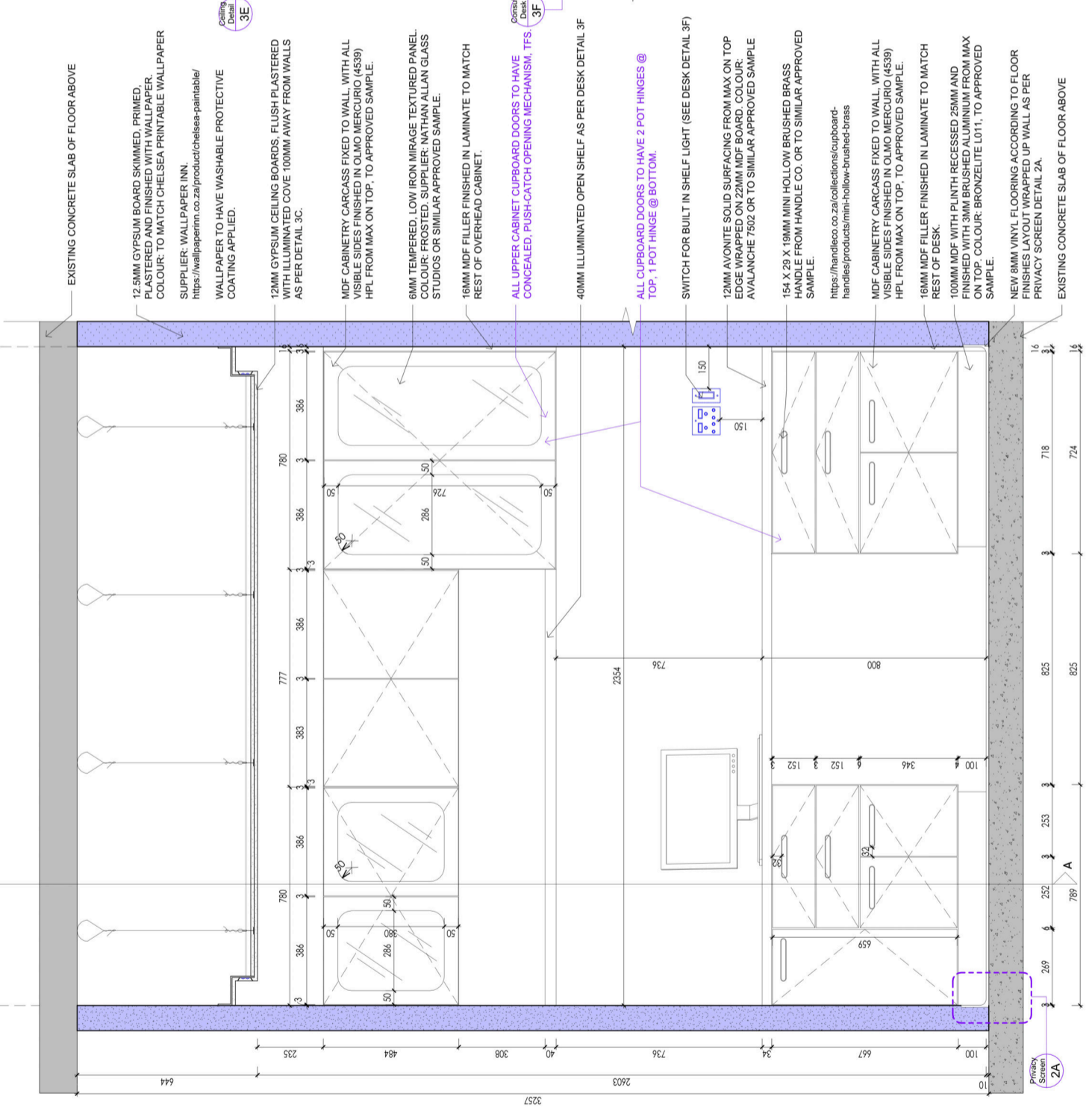
6MM LOW IRON GLASS  
COLOUR: MIRAGE CLEAR  
SUPPLIER: NATHAN ALLAN GLASS

**SPECIFIC MATERIALS**

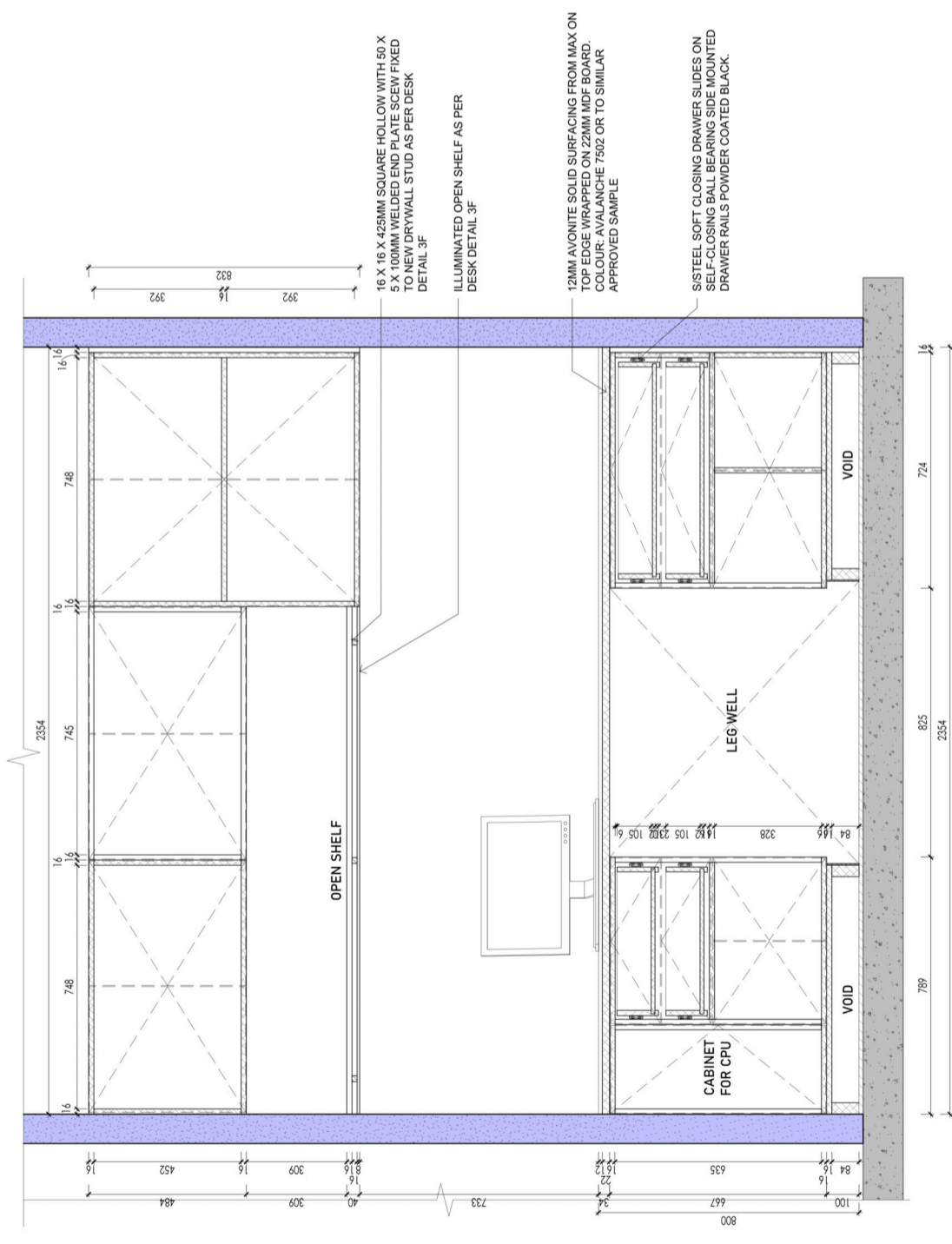
**RENDERED PERSPECTIVE OF JOINERY ITEM**



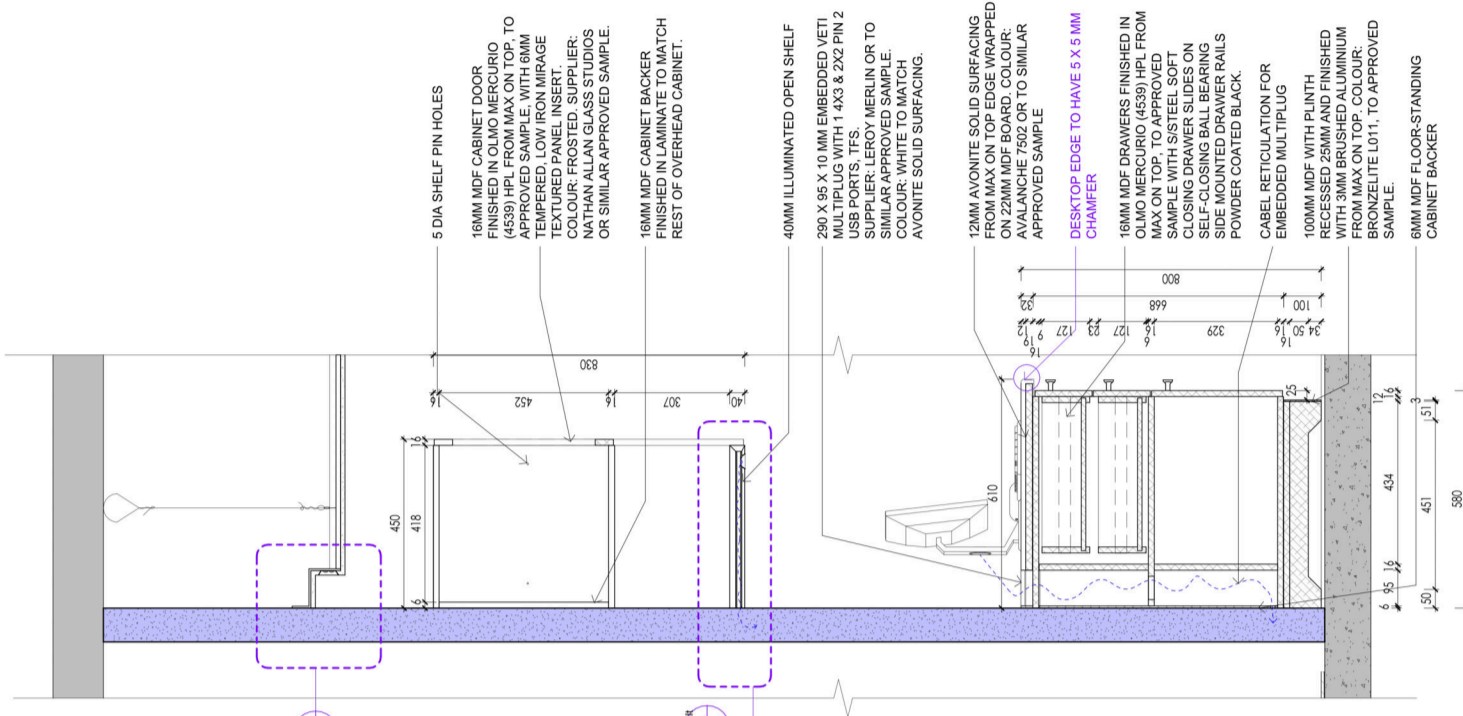
DETAIL 3A | 1:10 TYPICAL PLAN OF DESK AND OVERHEAD CABINET



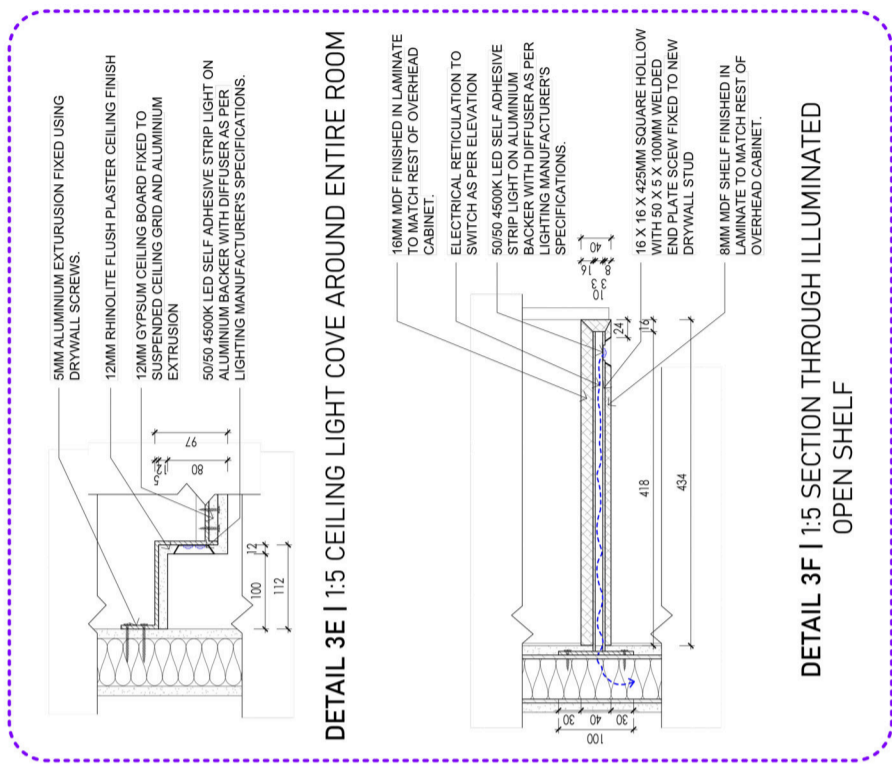
DETAIL 3B | 1:10 TYPICAL ELEVATION OF DESK AND OVERHEAD CABINET



DETAIL 3C | 1:10 TYPICAL FRONT FACING SECTION THROUGH DESK AND OVERHEAD CABINET



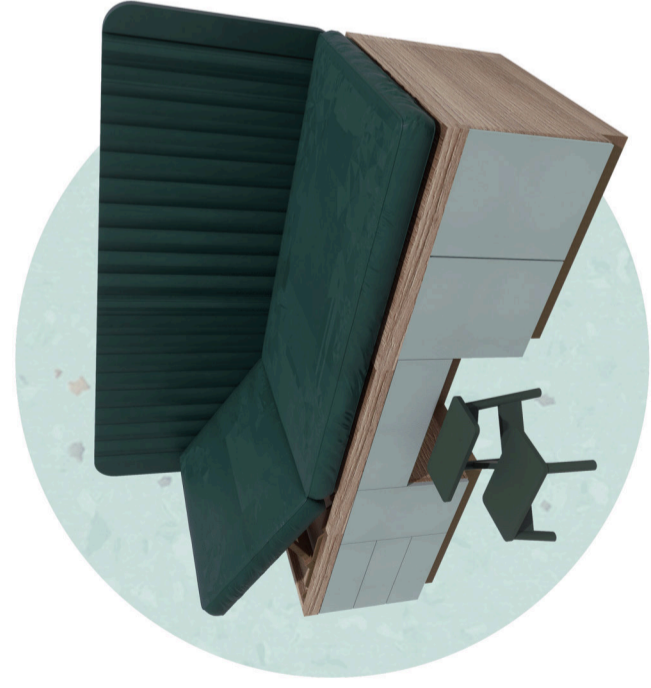
DETAIL 3D | 1:10 TYPICAL SIDE-SECTION THROUGH DESK AND OVERHEAD CABINET



DETAIL 3E | 1:5 CEILING LIGHT COVE AROUND ENTIRE ROOM

DETAIL 3F | 1:5 SECTION THROUGH ILLUMINATED OPEN SHELF

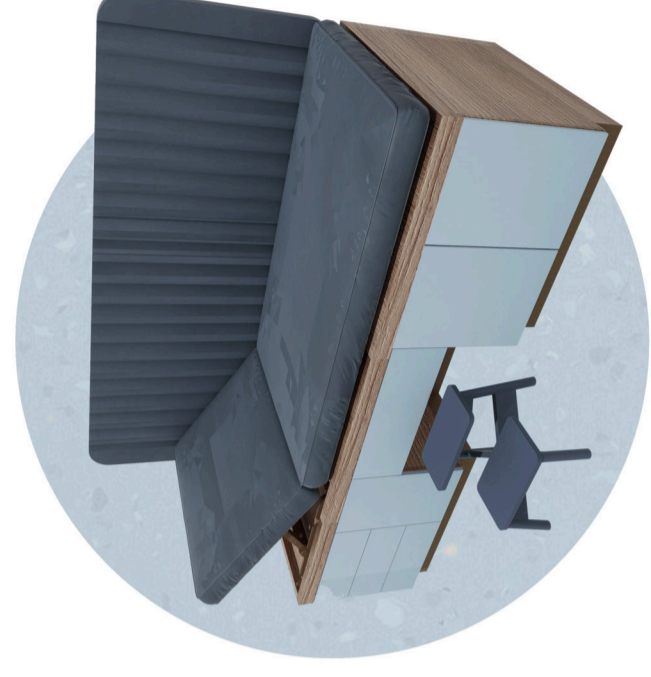
**NODE 4 - SUPPORT | DETAIL 3 CONSULTATION ROOM DESK**



ROOM 1 | GREEN

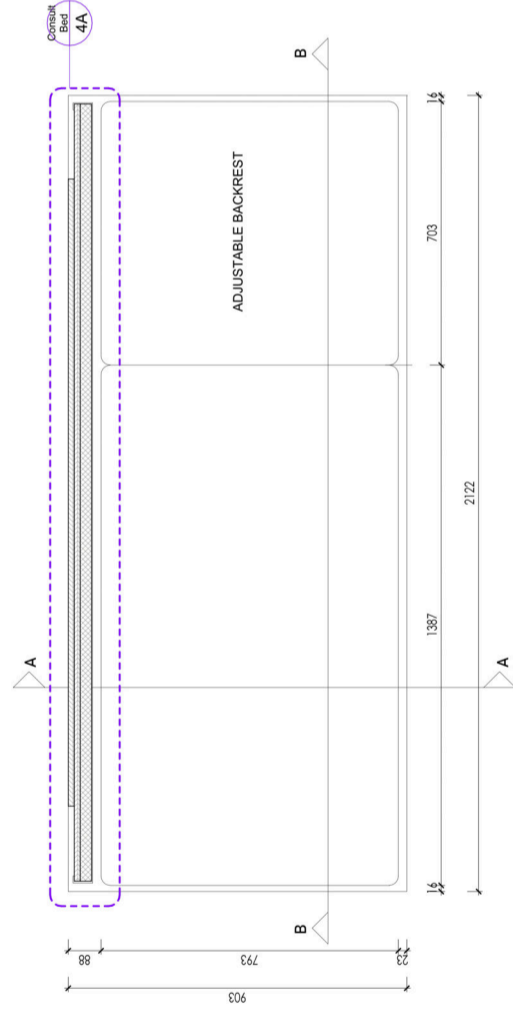


ROOM 2 | PURPLE



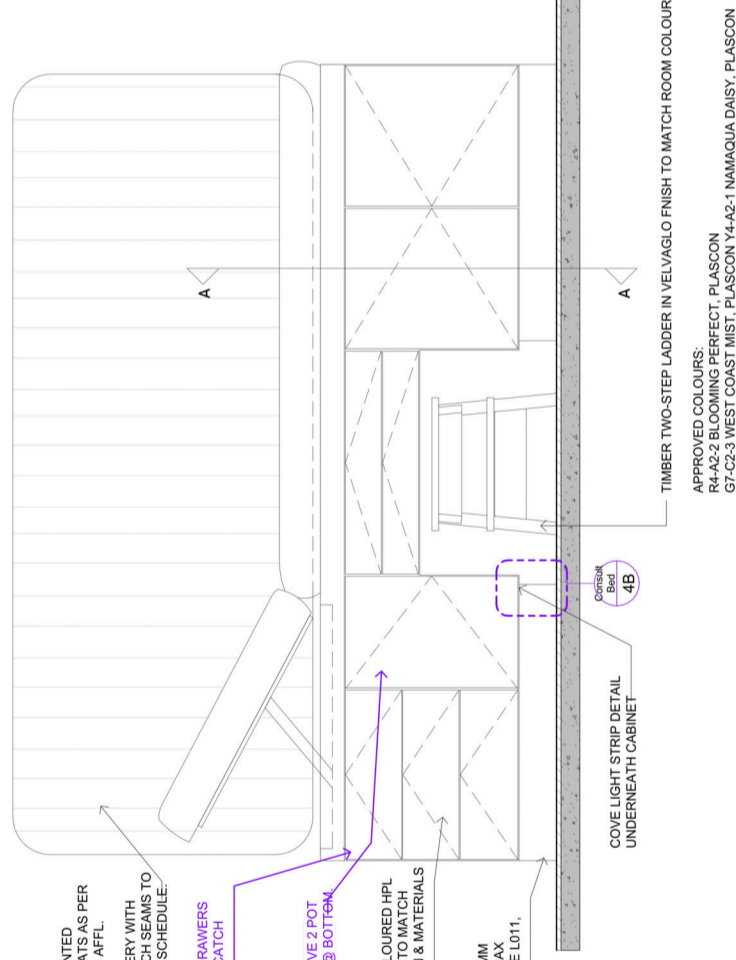
ROOM 3 | BLUE

RENDERED PERSPECTIVE OF COLOUR COMBINATIONS



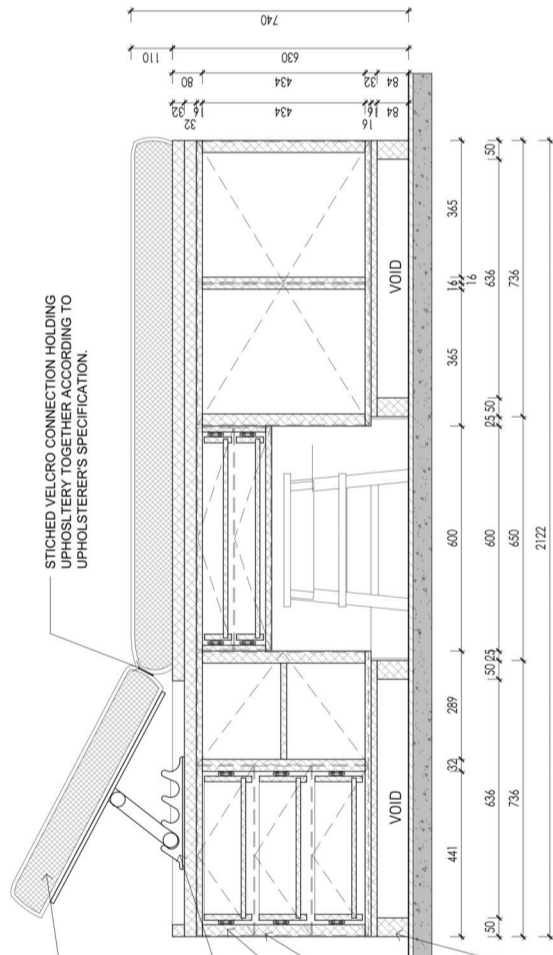
DETAIL 4-1 | 1:10 PLAN OF CONSULTATION BED AND WALL-MOUNTED BACKREST

2085 X 65 X 60MM WALL MOUNTED CUSHIONING ON FRENCH CLEATS AS PER DETAIL 1C MOUNTED @60MM AFL. CUSHIONING TO BE UPHOLSTERY WITH CHANNEL TUFTING AND FRENCH SEAMS TO APPROVED MATERIALS AS PER SCHEDULE.  
 ALL CLIPBOARD DOORS AND DRAWERS TO HAVE CONCEALED PUSH-CATCH SPRING MECHANISM, 1/2".  
 ALL CLIPBOARD DOORS TO HAVE 2 POT HINGES @ TOP, 1 POT HINGE @ BOTTOM.  
 18MM CABINET FRONTS IN COLOURS OR LAMINATE FROM MAX ON TOP TO MATCH ROOM COLOURS AS PER PLAN & MATERIALS SCHEDULE.  
 MDF PLINTH FINISHED WITH 3MM BRUSHED ALUMINIUM FROM MAX ON TOP. COLOUR: BRONZELITE L011, TO APPROVED SAMPLE.

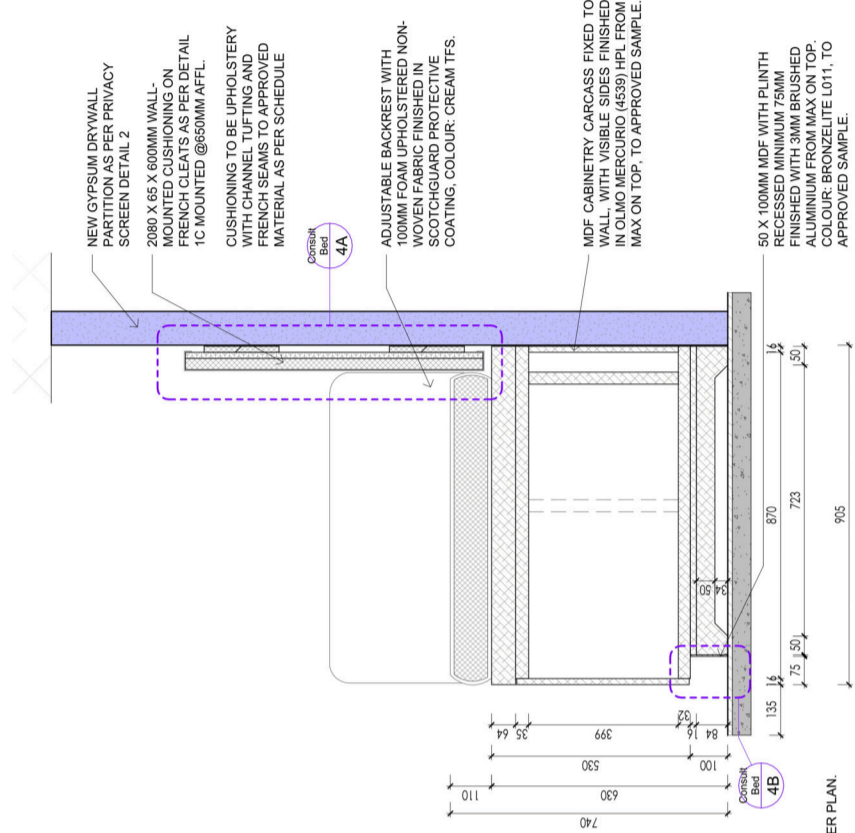


DETAIL 4-2 | 1:10 ELEVATION OF CONSULTATION BED AND WALL-MOUNTED BACKREST

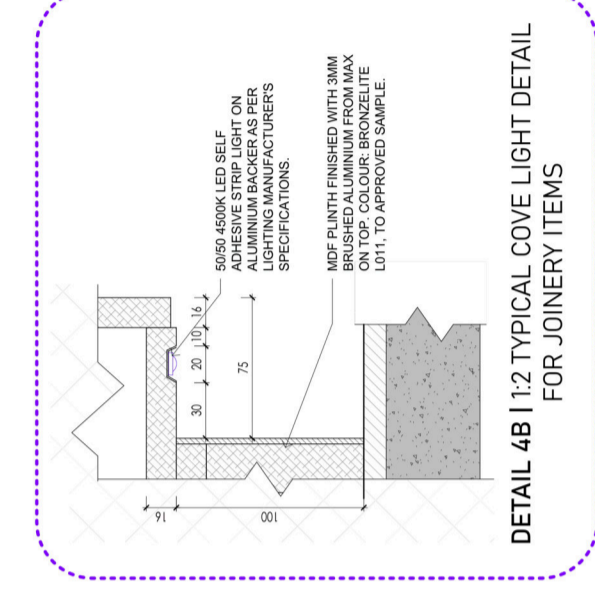
ADJUSTABLE BACKREST WITH 100MM X 100MM X 10MM RECESSED MINIMUM 75MM ALUMINIUM FROM MAX ON TOP. COLOUR: BRONZELITE L011, TO APPROVED SAMPLE.  
 HEAVY DUTY STEEL RECLINING MECHANISM TO BE SCHEDULED TO MANUFACTURERS TO MATCH BRUSHED ALUMINIUM FROM MAX ON TOP. COLOUR: BRONZELITE L011, TO APPROVED SAMPLE.  
 S/STEEL SOFT CLOSING DRAWER SLIDES ON SET CLOSING BALL BEARINGS TO MATCH TO MANUFACTURERS TO MATCH BRUSHED ALUMINIUM FROM MAX ON TOP. COLOUR: BRONZELITE L011, TO APPROVED SAMPLE.  
 50 X 100MM MDF WITH PLINTH RECESSED MINIMUM 75MM ALUMINIUM FROM MAX ON TOP. COLOUR: BRONZELITE L011, TO APPROVED SAMPLE.



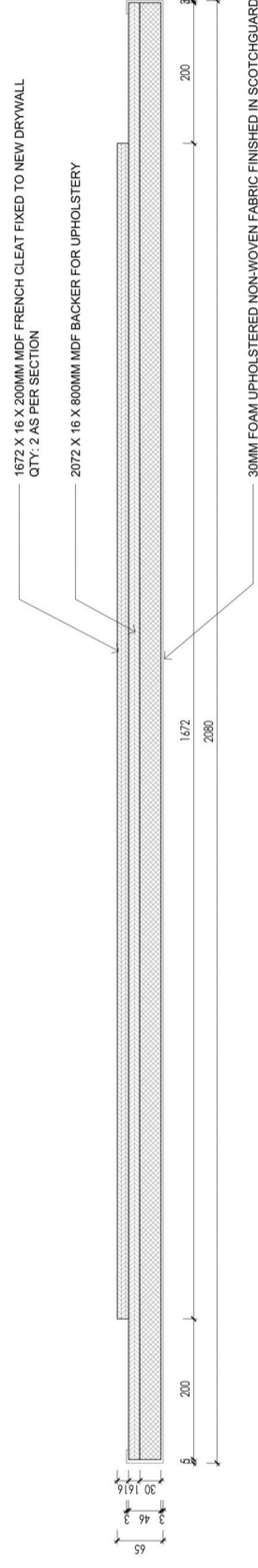
DETAIL 4-4 | 1:10 SECTION B-B THROUGH CONSULTATION BED



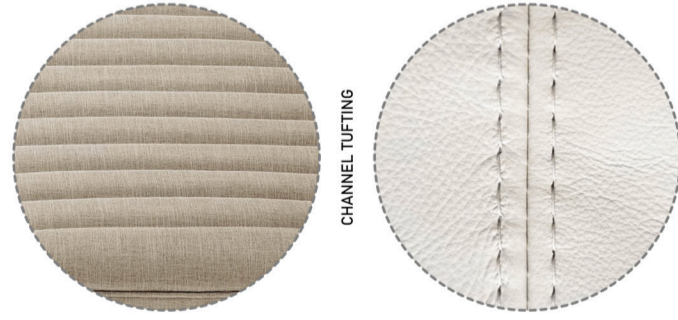
DETAIL 4-3 | 1:10 SECTION A-A THROUGH CONSULTATION BED AND WALL-MOUNTED BACKREST



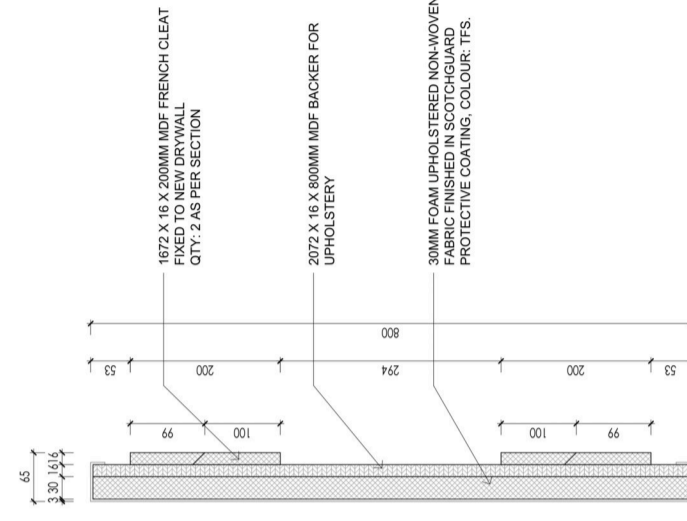
DETAIL 4B | 1:2 TYPICAL COVE LIGHT DETAIL FOR JOINERY ITEMS



DETAIL 4A-1 | 1:5 TYPICAL SECTIONAL PLAN OF WALL-MOUNTED BACKREST



UPHOLSTERY STYLE



DETAIL 4A-2 | 1:5 TYPICAL SECTION THROUGH WALL-MOUNTED BACKREST

RENDERED PERSPECTIVE OF WALL-MOUNTED BACKREST

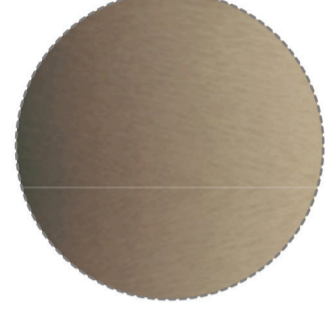
NODE 4 - SUPPORT | DETAIL 4 CONSULTATION ROOM BED & BACKREST



AVONITE SOLID SURFACING  
COLOUR: AVALANCHE 7502  
SUPPLIER: MAX ON TOP



HIGH PRESSURE LAMINATE  
COLOUR: OLMO MERCURIO 4539  
SUPPLIER: MAX ON TOP



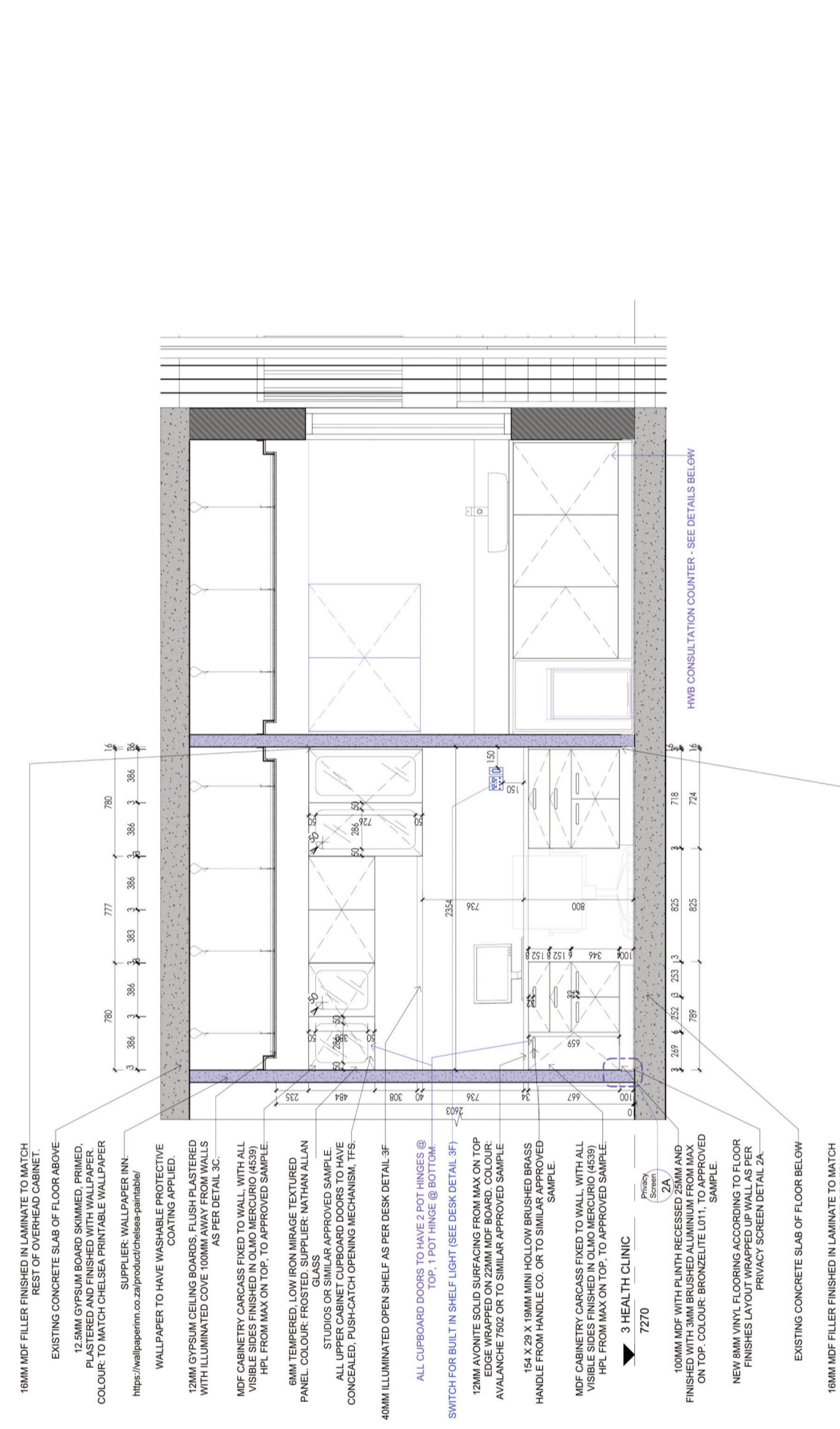
HIGH PRESSURE LAMINATE  
COLOUR: ALU BRONZELITE L011  
SUPPLIER: MAX ON TOP



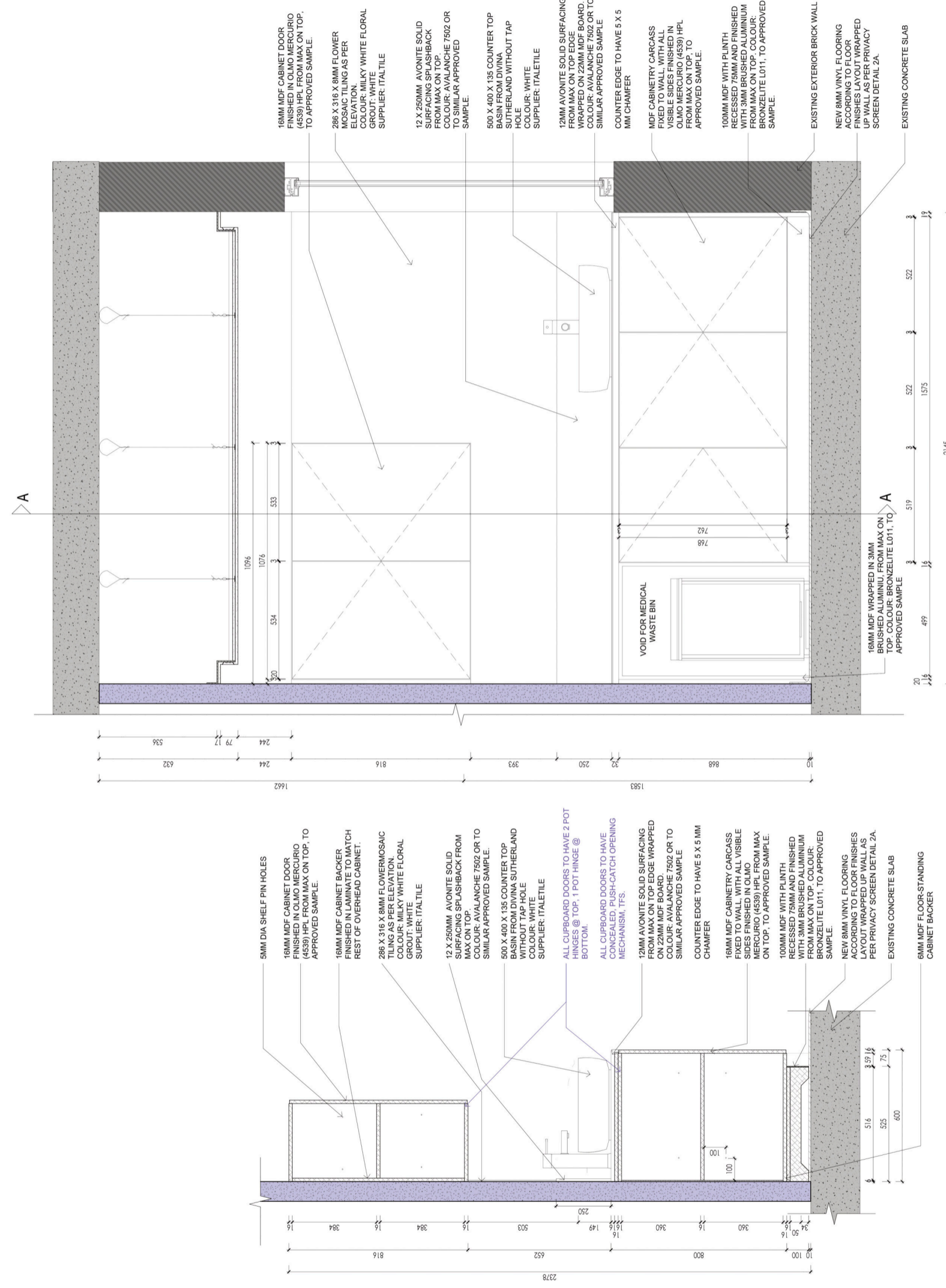
286 X 316 X 8MM TILES  
COLOUR: MILKY WHITE FLORAL  
MARBLE MOSAIC SHEET  
SUPPLIER: TAILETILE



500 X 400 X 135 COUNTER TOP BASIN  
COLOUR: WHITE, DIVINA  
SUTHERLAND WITHOUT TAP HOLE  
SUPPLIER: TAILETILE



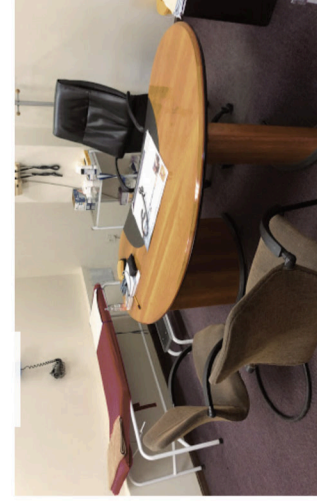
DETAIL 1 | 1:20 TYPICAL ELEVATION THROUGH CONSULTATION ROOM FACING DESK AND COUNTER



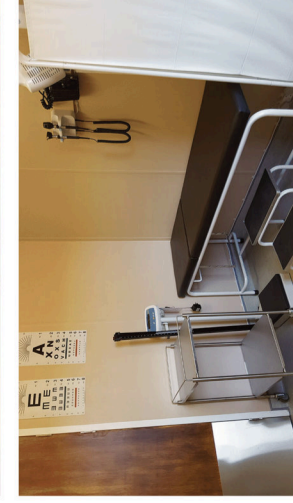
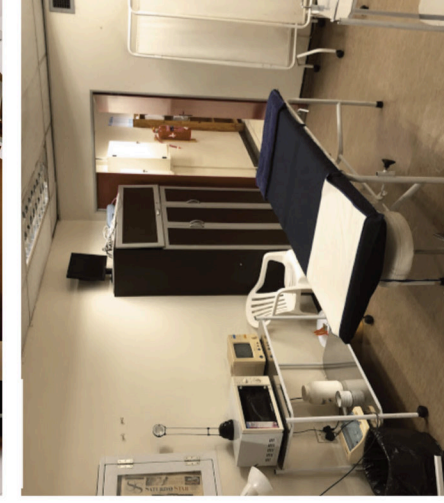
DETAIL 2 | 1:10 TYPICAL SECTION A-A THROUGH COUNTER

DETAIL 3 | 1:10 TYPICAL ELEVATION OF COUNTER

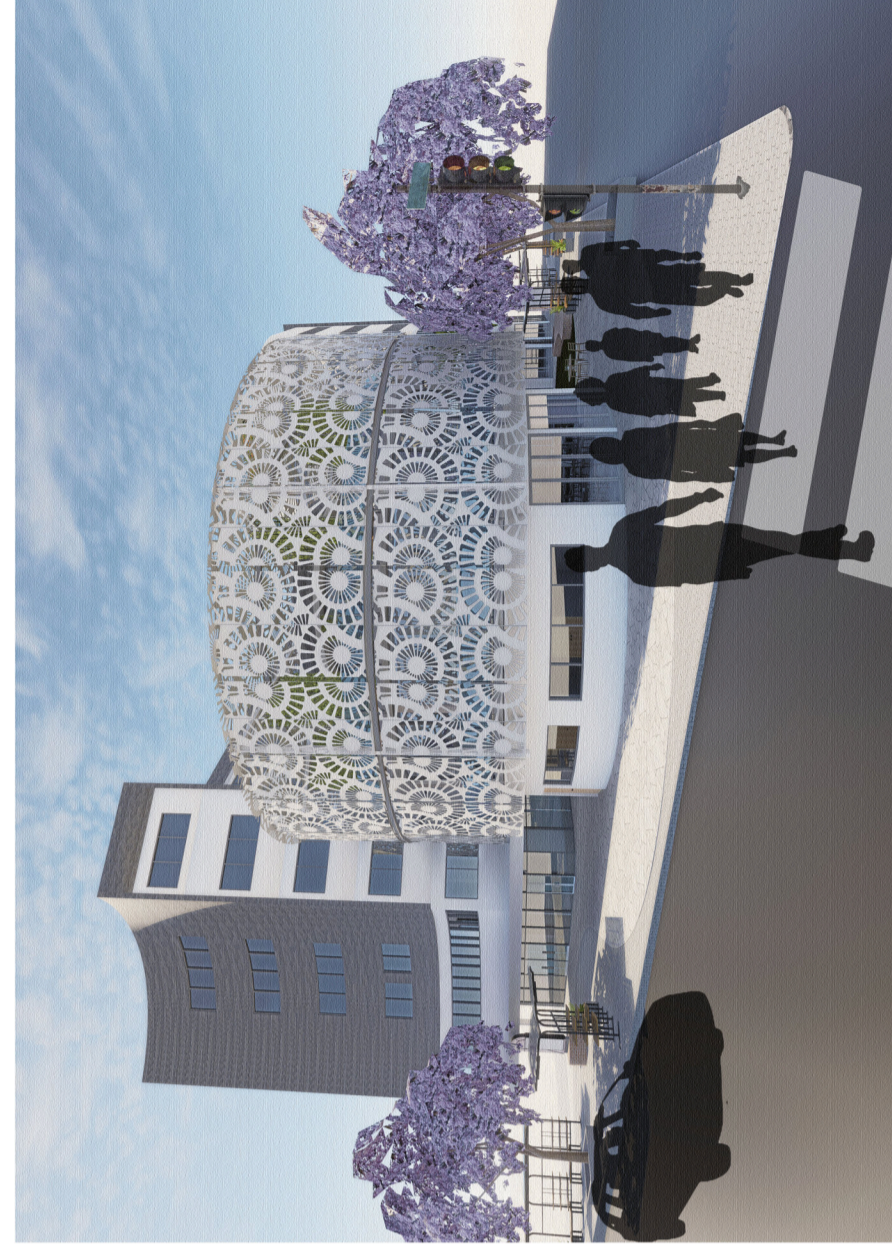
EXISTING NATIONAL HEALTHCARE IN SOUTH AFRICA & SAFE SPACES IN SUNNYSIDE



TYPICAL TREATMENT SPACES



PROPOSED HEALTHCARE FACILITY IN SUNNYSIDE



## CRITICAL REFLECTION OF THE DESIGN PROCESS

The existing context and building posed numerous challenges, offering various intervention opportunities. A central task in the iterative design process was identifying and distilling the critical aspects. Guided by Adaptable Futures' eight-layer hierarchical theory for sustainable retrofit architecture (building on Brand's six shearing layers of change), the process began by independently analyzing each part of the site to envision improvements.

Initial programmatic development prioritized overlapping uses to activate all site areas, sharing facilities and resources to enhance sustainability. However, this approach proved overly ambitious, risking compromise to both the site's heritage and the project's integrity. To address this, the project was refined to focus on core concerns, prioritizing smaller programs with greater attention to detail.

The health clinic emerged as the focal point, representing the most complex and essential component. Designed as a safe haven for vulnerable groups, including women and children facing domestic violence, the clinic embodies the project's intent to foster well-being. Its design followed a systematic, iterative approach informed by healthcare guidelines and user-experience testing, resulting in a cohesive, carefully crafted space.

## CONCLUSION & CONTRIBUTION TO THE FIELD

This project addresses the urgent need for safer, inclusive spaces for vulnerable groups, benefiting both the architectural field and society. It highlights adaptive reuse's potential to honor and transform heritage sites while introducing new social relevance. By integrating trauma-informed design with sustainable practices, the project sets a precedent for socially responsible architecture that prioritizes safety and well-being.

Locally, it serves as a prototype for improving urban safety and inclusivity, challenging exclusionary design norms. Globally, it contributes to broader discussions on urban design, positioning architecture as a tool for social justice and community resilience. By integrating clinics, workshops, and transitional housing, it strengthens local economies and aligns with sustainable development goals, offering a replicable model for cities worldwide.

## CRITICAL REFLECTION OF THE PROJECT CONTRIBUTION

The journey of developing The Sunnier Side has been both challenging and enlightening, given its focus on sensitive social issues such as gender-based violence and urban inclusivity. Addressing these topics required a careful balance of critical analysis, empathy, and respect for those affected.

Initially, the project's scope felt overwhelming, with the gravity of the issues making it difficult to refine its focus. Extensive feedback and critique helped identify a cohesive narrative, guiding the project from disparate ideas to a unified vision.

The project is heavily grounded in research, drawing upon a wealth of resources - as healthcare, well-being, and safety-oriented design are well-documented fields within architecture, providing a solid foundation to draw from. This emphasizes the evolving nature of architecture for social impact, especially at the intersection of public health and safety. Although there is thorough research available, practical implementation on a local scale remains limited, often due to funding constraints and construction standards that lag behind international best practices. Despite these challenges, this project embodies optimism for raising local construction standards and setting a precedent for safer, more equitable public and healthcare spaces that genuinely support the well-being of all community members.

