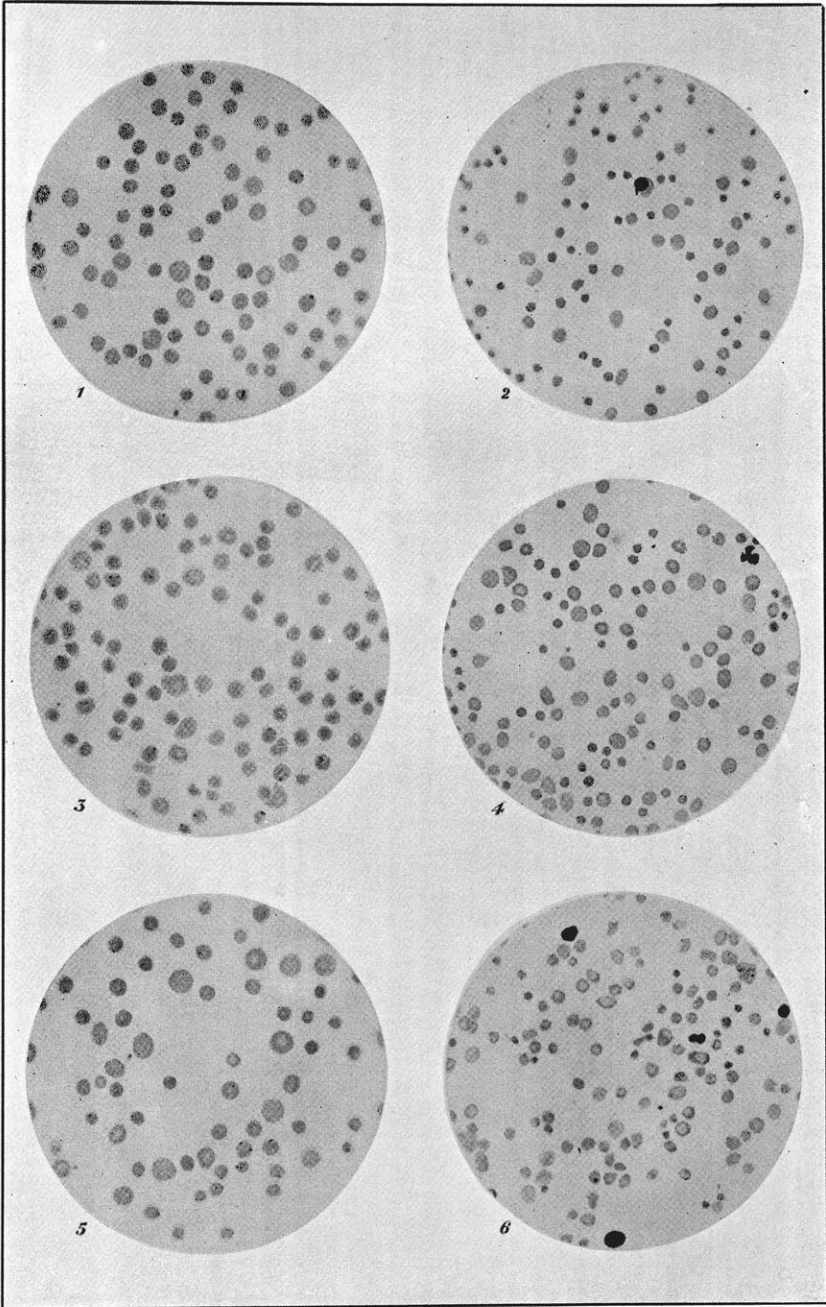


1.—1:2/11.
3.—13:2/11.
5.—14:2/11.

Heifer 1213
[Vide Expt. 5 (B)].

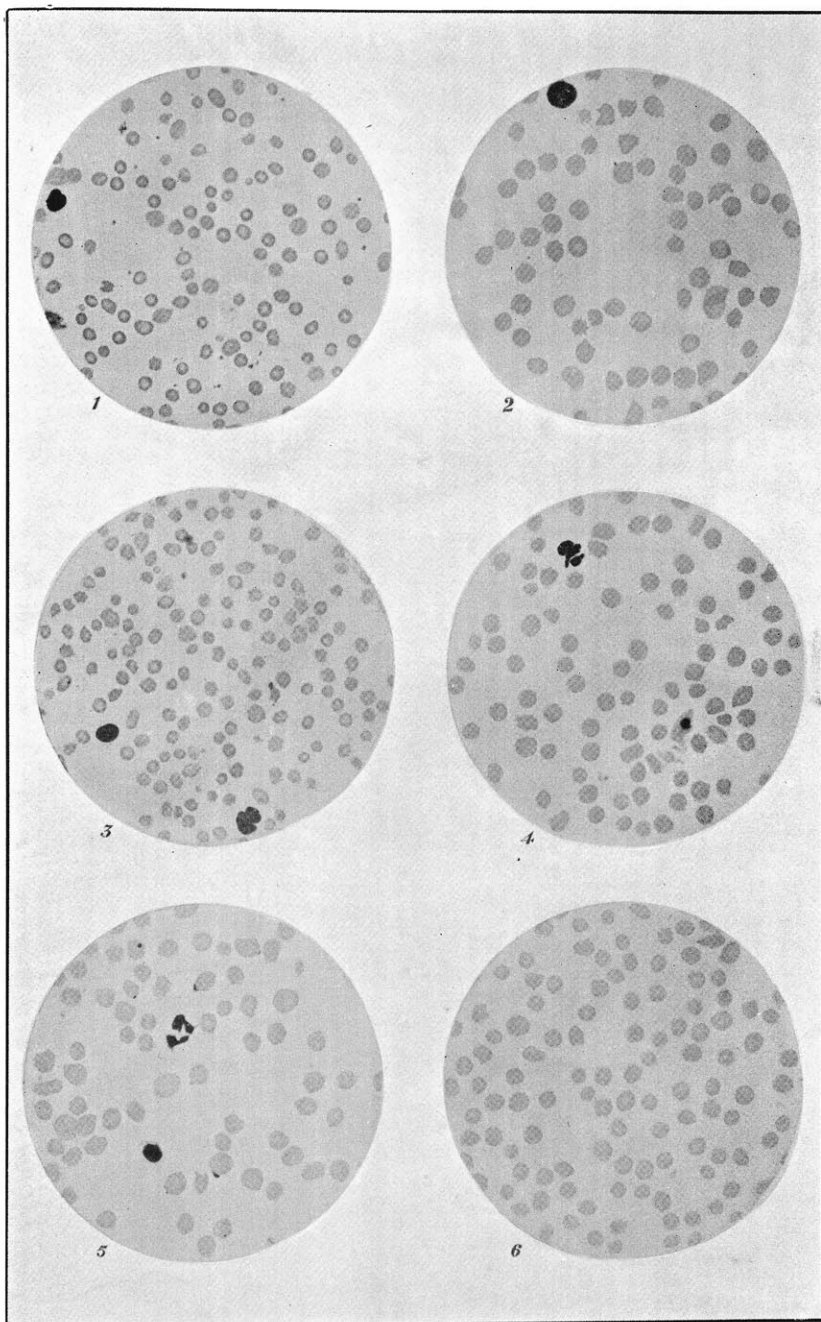
2.—15:2/11.
4.—16:2/11.
6.—17:2/11.



1.—18/2/11.
3.—19/2/11.
5.—20/2/11.

Heifer 1213
[Vide Expt. 5 (B)].

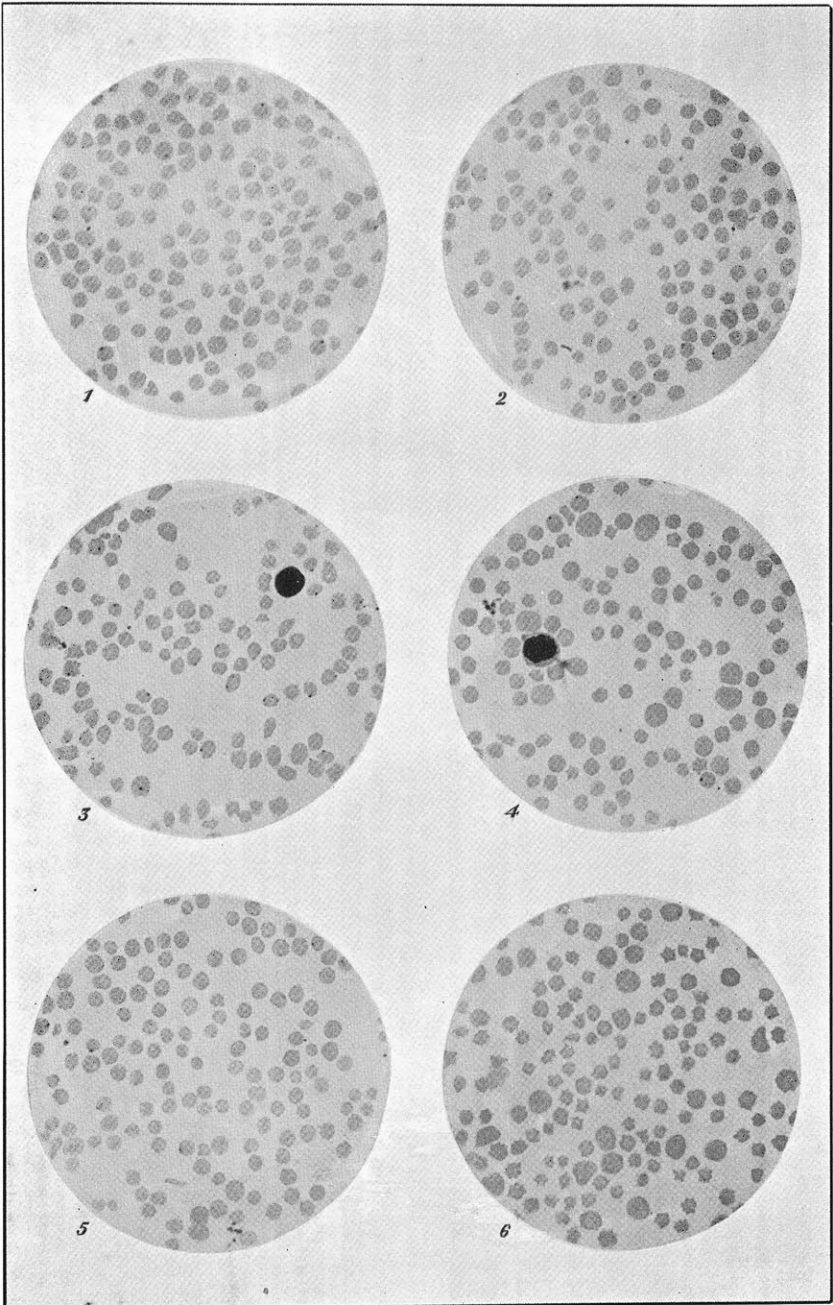
2.—21/2/11.
4.—22/2/11.
6.—23/2/11.



1.—24/2/11.
3.—25/2/11.
5.—27/2/11.

Heifer 1213
[Vide Expt. 5 (B)].

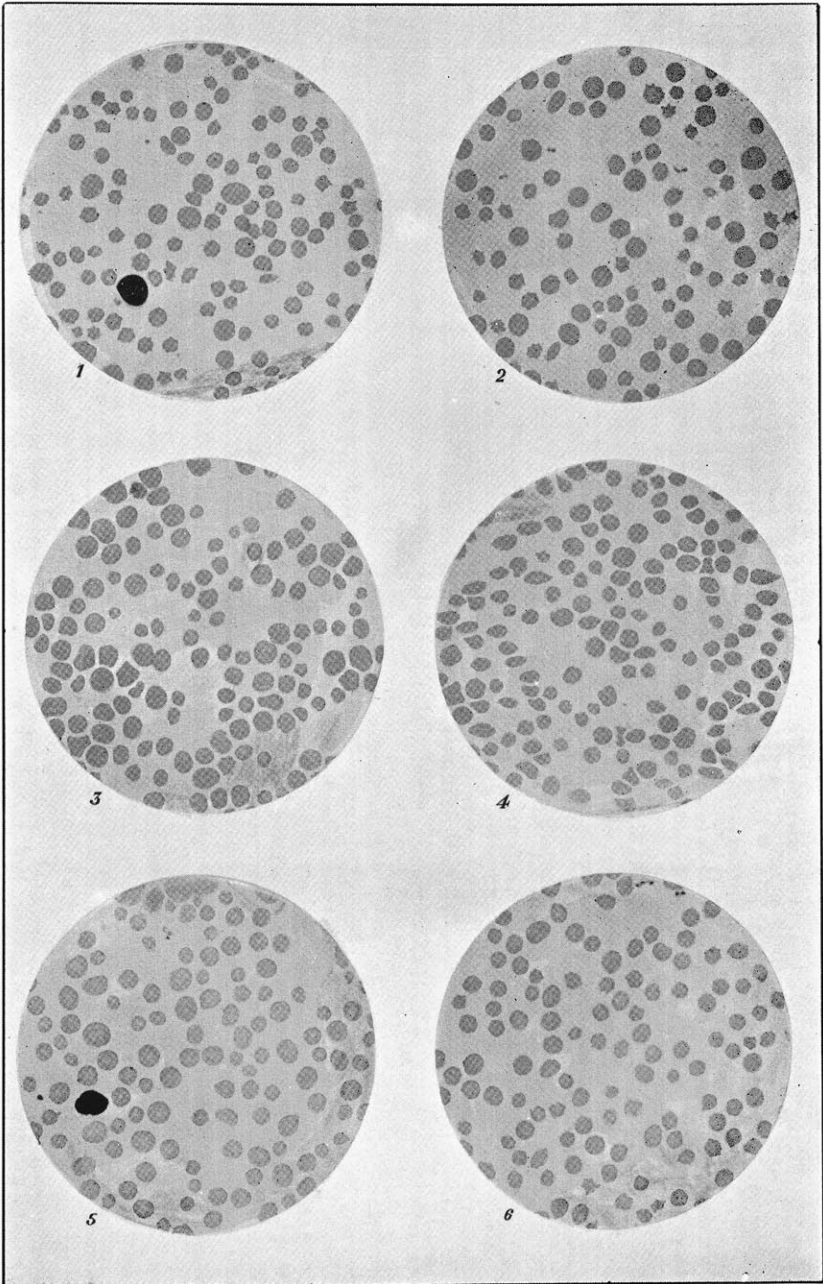
2.—3/3/11.
4.—7/3/11.
6.—11/3/11.



1.—4/1/11.
3.—5/1/11.
5.—6/1/11.

Africander Calf 1168
[Vide Expt. 6 (A)].

2.—7/1/11.
4.—8/1/11.
6.—9/1/11.



1.—10/1/11.
3.—11/1/11.
5.—12/1/11

Africander Calf 1168
[Vide Expt. 6 (A)],

2.—13/1/11.
4.—14/1/11.
6.—18/1/11.

ANIMAL

ENGLISH HEIFER

No 1213

Date January 23rd 1911

Remarks

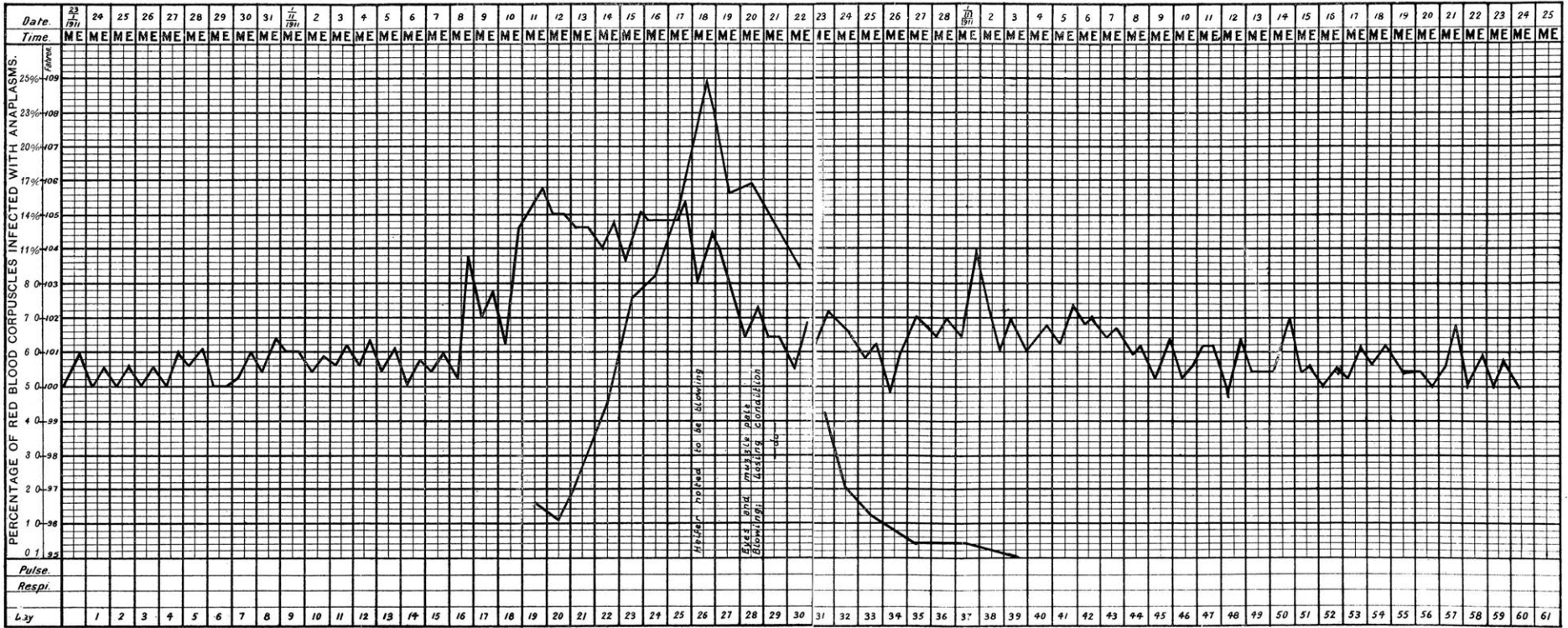
Injected subcutaneously on the 23rd January, 1911 with 50 cc fresh blood of Heifer 930

(Vide Experiment

K "B")

and Plate Nos:

I, II, and III.



Temperature Curve of an Animal suffering from Anaplasmosis contracted by the Injection of Blood.

ANIMAL

AFRICANDER CALF

No 1168

Date November 12th

1910

Remarks

Infested with

Blue Larval Ticks

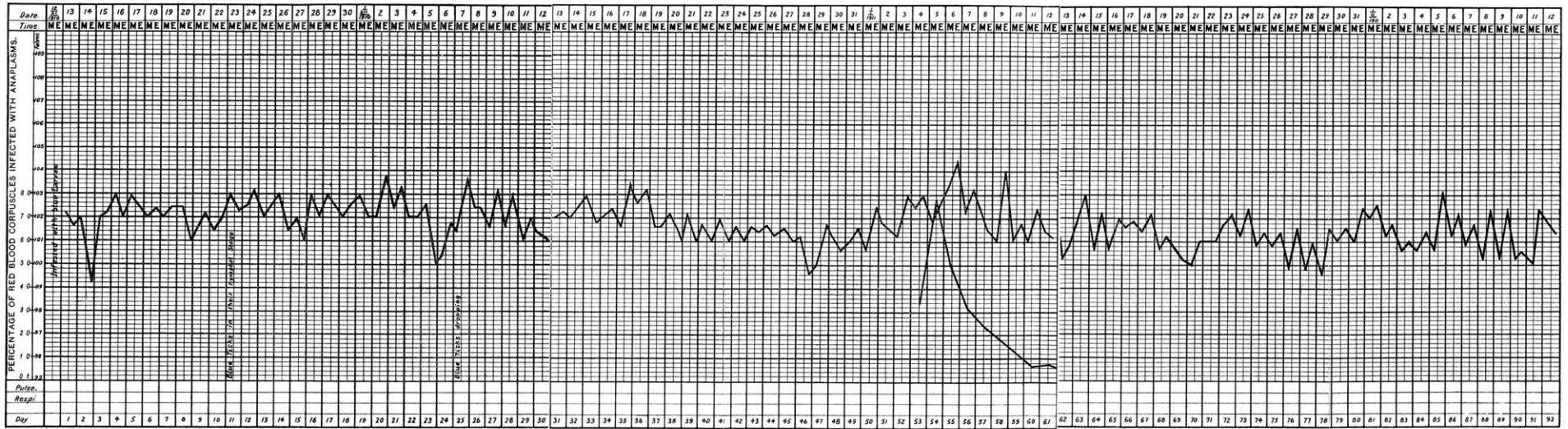
(Reference No. 322)

(Vide Experiment

No. 6 "A")

and Plate Nos.

IV and V.



Temperature Curve of an Animal suffering from Anaplasmosis contracted by the Infestation of Ticks.