



Savor the Delight

MENLYN'S MELTING POT

REVITALISING **FLUID FOOD TRADE** AT THE
MENLYN JUNCTION

OPEN NOW

NEO N. MABASA
SUPERVISOR:

MINT ARCH (PROF) | U19042389
JANRI BARKER

ACKNOWLEDGEMENT

I would like to express my deepest gratitude to my family and my best friend for their unwavering support, love, and encouragement throughout this journey; you have kept me afloat during every challenge and triumph. To my supervisor, Janri, thank you for your insightful guidance and dedication in steering me through this project and for being a constant source of knowledge and encouragement. To the incredible ladies in my class, your resilience, creativity, and passion inspire me every day and have made this journey truly enriching. Lastly, I extend my heartfelt thanks to Boukunde for

ABSTRACT

Keywords: Fluid Food Systems, Community Engagement, Sustainable Design, Local Food Culture, Urban Revitalisation

The Menlyn Melting Pot design proposal aims to transform Pretoria's Menlyn Piazza into a cohesive and adaptable space that supports local entrepreneurs, fluid food vendors, and the broader community. Currently, congestion and competition for space between taxis, pedestrians, and fluid food vendors along the sidewalk on Lois Avenue—situated between Menlyn Park and Menlyn Maine—create an unstructured setting that leads to persistent conflicts, lack of infrastructure, and safety risks. The absence of designated zones for storage, preparation, or trading forces vendors to work under precarious conditions, often resulting in inefficient methods and repeated removals by local authorities.

This project focuses on resolving these spatial and social conflicts by reimagining the public space to better accommodate all users. The plan introduces modular vendor stalls, communal seating areas, and a redesigned sidewalk that designates zones for vendors, pedestrians, cyclists, and taxis to ensure smooth flow and reduce congestion. By creating a well-organized, inviting urban environment, the design empowers fluid food vendors through adaptable stalls that can be tailored to their specific needs, supported by a shared prep kitchen and vendor support services like the culinary workshop and entrepreneurship learning hub. These services provide vital infrastructure for safe food preparation and offer opportunities for skill development and business growth.

The framework connects Menlyn Park to Menlyn Maine, positioning Menlyn Piazza as a central hub that bridges these retail areas. Additionally, the incorporation of regenerative farming and green spaces enhances the project's sustainability, aesthetics, and environmental impact, promoting local food production and community engagement. The Menlyn Melting Pot proposal seeks to create a vibrant public space that supports social and economic inclusion while ensuring the sustainable growth and recognition of fluid food vendors within the urban fabric.



1. Selling food in non-permanent ("informal") settings like street carts, kiosks, and pop-up stalls revitalises fluid food vending spaces.

TABLE OF CONTENTS

p.. 01	p. 01	p. 03	p. 08	p. 08
Project Details	Project Brief	Situating the Project	Theoretical Framework	Project Framework
p. 08	P. 09	p. 10	p. 11	p. 12
Project Focus	Spatial Design Development & Integrated Technology	Menlyn Melting pot Floor plan - design focus	Menlyn melting pot sections	Menlyn melting pot SIDEWALK ENTRANCE elevation
p. 13	p. 15	p. 16	p. 17	p. 18
Node 1: Modular stall and communal seating design	Node 2: Shared Prep Kitchen	Node 3: Additional Vendor Support Services	Material Palette and renders	Conclusion & References

PROJECT DETAILS

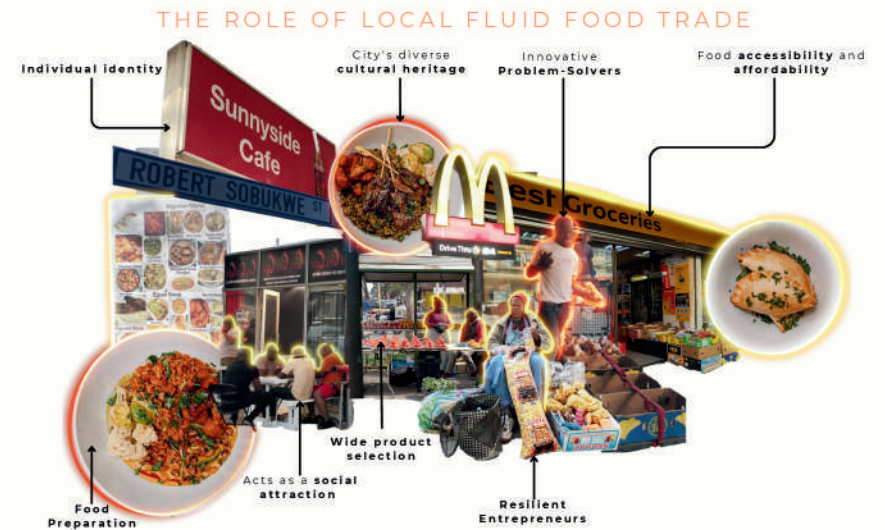
- **Title:** Menlyn Melting Pot-A Fluid Food Vendor Design Proposal
- **Type of Building/Programme:** Public Space, Market Stalls, Vendor Support Hub, Communal Prep Kitchen, Wellness Center, and Regenerative Farming Space
- **Address:** Lois Ave, Menlyn, Pretoria, 0063
- **GPS coordinates:** Menlyn Piazza, Approx. 7835° S, 28.2779° E
- **Departmental Research Field:** Spatial and Urban Design, Community Development
- **Client:** Local Municipality / Vendors' Association
- **Theoretical Premise:** Addressing socio-economic, spatial, and cultural inclusion through creating multifunctional spaces for fluid traders. The project integrates fluid food vendors into a cohesive urban framework, providing modular vendor stalls, shared prep spaces, vendor support services like culinary and entrepreneurship workshops, and sustainable initiatives like regenerative farming.

PROJECT BRIEF

PROJECT OVERVIEW

The Menlyn Melting Pot project is in Menlyn Piazza, a commercial space positioned between Menlyn Park and Menlyn Maine in the dynamic urban landscape of Pretoria, South Africa. Although this area is vibrant and bustling, it currently faces significant spatial conflicts as pedestrians, taxis, cyclists, and fluid food vendors all compete for limited sidewalk space. The lack of structured zones results in congestion, safety concerns, and the frequent displacement of vendors, leaving the site fragmented and chaotic.

The primary goal of the project is to resolve these conflicts by transforming Menlyn Piazza into a cohesive, multifunctional public space that celebrates and supports the local food vendors. The proposal introduces dedicated vendor zones, communal seating, a shared prep kitchen, and a variety of support services, including an entrepreneurship hub and culinary skills workshops. These interventions are tailored to empower the vendor community, providing them with essential infrastructure to operate safely and effectively. Through modular vendor stalls, the design offers flexibility, allowing vendors to customize their setups based on their unique needs—whether they sell fresh produce, packaged goods, or cooked meals—ensuring that the space adapts to the diverse culinary offerings that enrich the local food scene.



WHAT IS THE MENLYN MELTING POT?

At the heart of this project is a focus on fluid food vendors as the primary user group. These vendors bring resilience, creativity, and cultural diversity to Menlyn's culinary landscape, playing a vital role in the area's identity. By prioritizing their needs, the design acknowledges their contributions and aims to create adaptable spaces that celebrate their entrepreneurial spirit. The modular stalls are equipped with utilities and secure storage, addressing their need for stability and organization while promoting sustainability. The communal seating offers flexible configurations, enhancing social interactions and creating an inviting atmosphere that draws in the community to enjoy the vendors' offerings. The shared prep kitchen and support spaces further support vendor operations, offering a hub for skill development, business growth, and safe food preparation through culinary and entrepreneurial training workshops.

The existing sidewalk layout inadequately serves this diverse user base, with poorly defined spaces that lead to unsafe conditions for both pedestrians and vendors. The redesign strategically zones areas for each group—pedestrians, vendors, cyclists, and taxis—creating a safer and more organized flow. By eliminating spatial competition, the redesign enhances functionality and overall user experience, ensuring that each group has a clearly defined and purposeful place.

Through a modular framework, Menlyn Melting Pot creates an adaptable, sustainable, and inclusive environment. This framework integrates flexible vendor stalls, structured communal spaces, and support facilities that together form a self-sustaining ecosystem. The project not only improves safety and accessibility but also fosters a strong sense of community, showcasing the vibrant, diverse food trade that Menlyn has to offer. Ultimately, Menlyn Melting Pot reimagines Menlyn Piazza as a thriving urban space that supports local vendors, enriches the community, and contributes to sustainable urban development.

PROBLEM STATEMENT

The sidewalks along Lois Avenue have become a battleground for space. Here, fluid food vendors, pedestrians, cyclists, and taxis all compete for their share of a sidewalk that was not designed to accommodate all their needs. The result is a congested environment that places vendors in precarious positions.

For the food vendors, who are an essential part of the local culture and economy, this lack of infrastructure means more than just inconvenience. Without designated areas for storage or preparation, they are forced to operate in unsafe, unregulated conditions, often at risk of being displaced by city authorities. Their makeshift stalls disrupt pedestrian flow, and they are caught between trying to make a living and the constant threat of removal. The absence of proper facilities means vendors are operating under unsustainable conditions, with no permanent spaces to call their own.

On the other side, pedestrians must navigate the cluttered sidewalks, often walking in the street to avoid vendor setups, while taxis stop unpredictably, creating additional safety hazards. What should be a vibrant, inclusive space has turned into a fragmented and disjointed environment where no one truly benefits.

This design proposal seeks to address these issues by reimagining the space to prioritise safety, accessibility, and inclusivity for all users. The Menlyn Melting Pot project aims to provide fluid food vendors with the infrastructure they need—dedicated stalls, storage, and shared preparation spaces—while reorganising the sidewalk to accommodate the various users in a functional manner. By addressing the spatial and social conflicts in the area, this proposal seeks to transform Menlyn Piazza into a space that works for everyone, fostering a vibrant community atmosphere while ensuring the sustainability and dignity of the vendors who call it home.

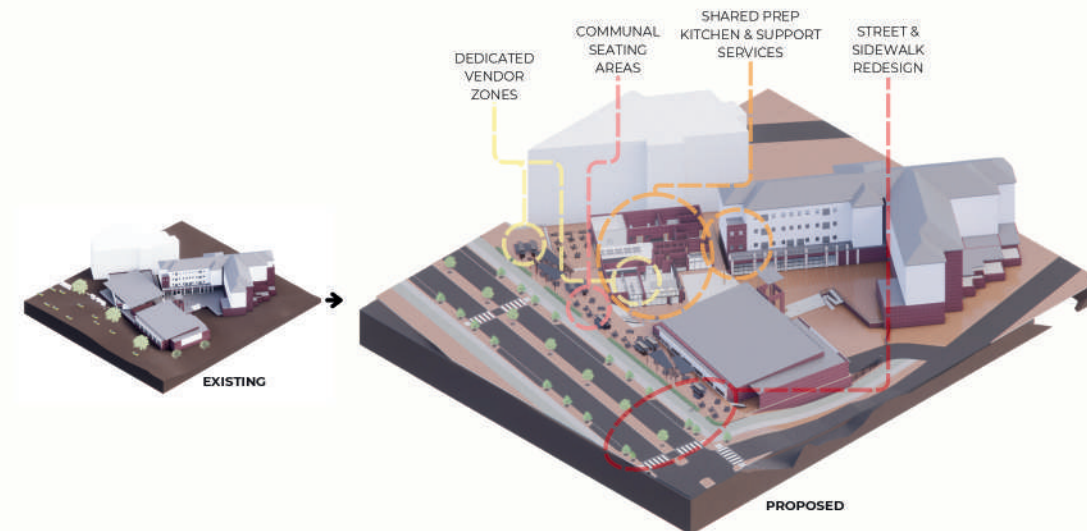


UNDERSTANDING THE PROBLEM

OBJECTIVES

The Menlyn Melting Pot project has several key objectives that aim to transform the fragmented space along Lois Avenue into a vibrant and inclusive public environment:

- 1. Resolve Congestion:** The primary goal is to alleviate the existing congestion caused by the unregulated mix of vendors, pedestrians, taxis, and cyclists. By creating designated zones for each group, the project seeks to streamline movement and improve safety for all users.
- 2. Enhance Public Space:** The project aims to create a well-designed, multifunctional public space that invites people to gather, interact, and engage with their surroundings. This includes the introduction of communal seating areas, green spaces, and pathways that enhance the overall urban experience.
- 3. Provide Dedicated Zones for Vendors:** One of the central aims is to provide fluid food vendors with safe, structured spaces to operate their businesses. The modular stalls will offer them much-needed infrastructure, including utilities, storage, and flexibility to customise their setups based on their needs.
- 4. Promote Safety and Accessibility:** By reorganising the sidewalk to accommodate all users in a more structured manner, the project will reduce the current safety hazards. Clear pathways for pedestrians and cyclists, as well as designated taxi bays, will improve the overall safety and accessibility of the area.
- 5. Support Vendor Growth:** Through the integration of shared support services such as a communal prep kitchen and entrepreneurship workshops, the project will not only provide immediate solutions but also foster long-term growth and sustainability for local vendors.
- 6. Encourage Sustainable Practices:** Incorporating green spaces and regenerative farming initiatives will help promote environmental sustainability within the urban landscape, contributing to a healthier, more resilient public space.



INTRODUCTION TO THE DESIGN PROPOSAL

URBAN CONTEXT

Menlyn Park and Menlyn Maine are two significant retail and commercial hubs in Pretoria, each drawing a steady flow of visitors, shoppers, and commuters. Menlyn Park, with its established shopping complex, and Menlyn Maine, a modern lifestyle center, are prominent destinations for both locals and tourists. However, the space between them, Menlyn Plaza, lacks cohesion and struggles with congestion, as pedestrians, taxis, cyclists, and fluid food vendors all compete for limited sidewalk space along Lois Avenue.

The Menlyn Melting Pot project seeks to bridge this gap, transforming Menlyn Plaza into a vibrant link between these two retail destinations. By reimagining the sidewalk and surrounding spaces, the project provides an integrated, multifunctional area that serves as a common ground for all users. This central location will ease the flow between Menlyn Park and Menlyn Maine, offering a dynamic public space that caters to diverse activities and supports local vendors. The result will be a connected, people-centered corridor that enhances both safety and accessibility.

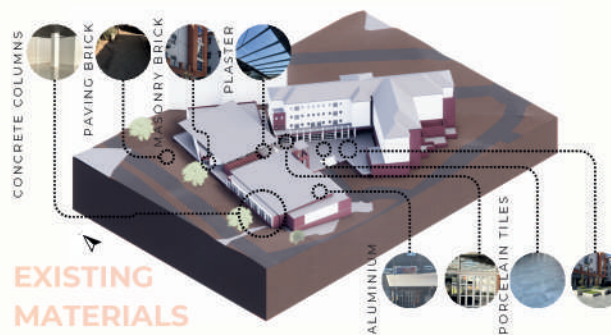
SITE ANALYSIS

The physical and social conditions at Menlyn Plaza reveal several challenges that underscore the need for a thoughtful redesign. Currently, the sidewalk and adjacent spaces lack structured zones, which leads to unregulated overlap among pedestrians, vendors, taxis, and cyclists. This layout forces pedestrians to navigate around vendor stalls and taxis that frequently stop along the sidewalk, causing safety hazards and congestion. Vendors, meanwhile, are scattered across the area without designated spaces, making their setup precarious and often in conflict with pedestrian and vehicle paths. This disorganised layout not only disrupts foot traffic but also diminishes the potential for meaningful vendor-customer interactions, as the lack of defined spaces reduces the appeal and functionality of the area.

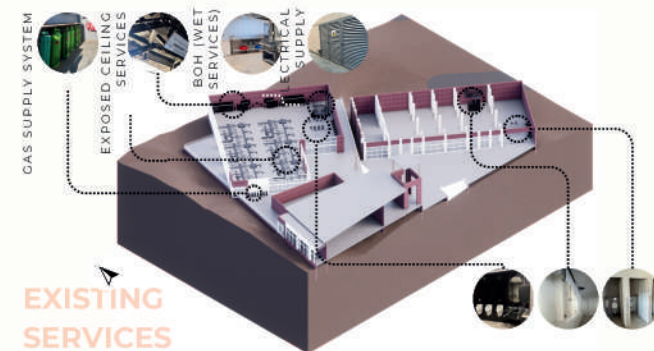
Social dynamics further complicate the site's usage. Vendors, pedestrians, and taxi drivers each have specific needs that are not currently accommodated, creating friction and frequent disruptions. The absence of clear zones has led to conflicts between vendors and local authorities, who frequently enforce rules that result in displacement and uncertainty for the vendors. Recognising these spatial and social dynamics, the redesign strategically organises the space to separate these different user groups, enhancing safety, accessibility, and flow. By clearly defining zones for each group, the redesign aims to create a harmonious environment that allows for smoother pedestrian movement, orderly taxi operations, and a secure, permanent space for vendors. This approach not only resolves current conflicts but also fosters an inclusive, inviting public area where vendors and the community can thrive side by side.



MESO CONTEXT



EXISTING MATERIALS



EXISTING SERVICES

USERS

The Menlyn Melting Pot project is designed to meet the unique needs of its diverse users, including fluid food vendors, pedestrians, cyclists, taxi operators, customers, local residents, and support service providers. The project tailors its design to create a cohesive, accessible, and inclusive space that accommodates each group.

Fluid food vendors bring vibrancy and diversity to Menlyn Piazza, but many currently lack secure, equipped spaces to store and sell their goods. These vendors require designated, functional stalls with utilities, storage, and flexible setups that can adapt to various types of offerings, whether fresh produce, packaged goods, or cooked meals. Additionally, they need access to shared facilities like the prep kitchen and entrepreneurship workshops, which provide skill development and business support to help vendors build sustainable livelihoods.

Pedestrians as a mix of shoppers, commuters, and visitors, pedestrians rely on clear, accessible pathways to navigate the area safely. The current overlap between pedestrian routes and vendor setups compromises both safety and accessibility. The new design introduces structured walkways and designated zones, ensuring pedestrians can move freely without obstruction, enhancing the area's appeal and usability.

Cyclists use Menlyn Piazza as a route for commuting and leisure, but they lack safe, designated paths. The redesign includes protected bike lanes that separate cyclists from pedestrian and vehicle zones, encouraging eco-friendly transportation and supporting a healthy, active urban environment.

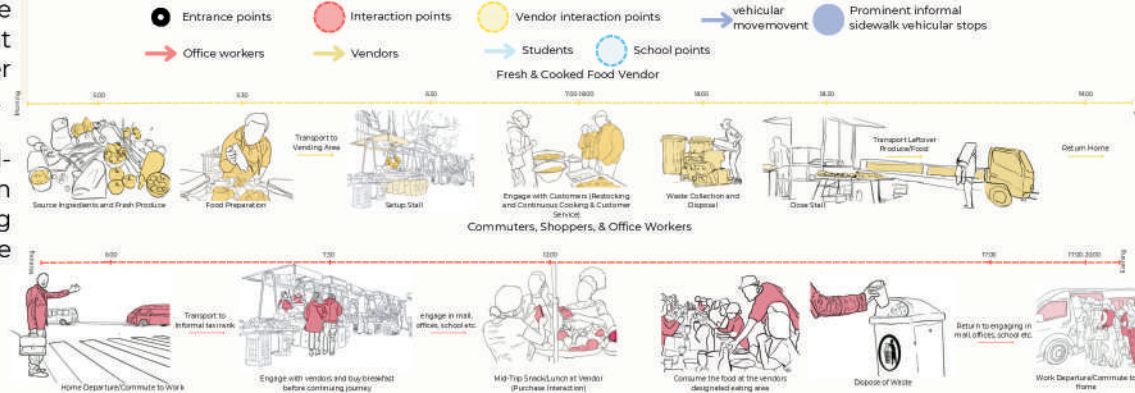
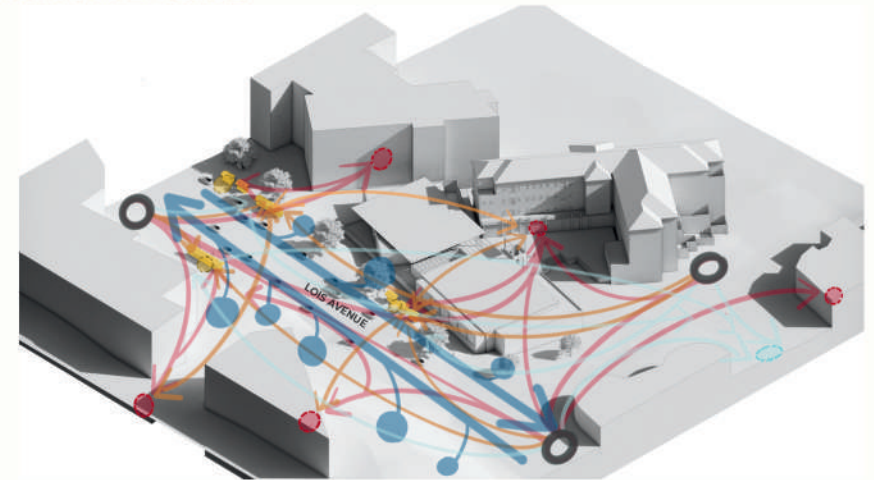
Taxi Operators and Support Service Providers are essential for transporting customers and goods, yet the lack of designated bays has led to congestion and conflicts with other users. The project incorporates dedicated taxi bays and designated areas for other support services, streamlining operations and reducing interference with pedestrian and vendor spaces. This organization not only minimizes congestion but also ensures taxis can operate safely and efficiently.

Customers of the fluid food vendors, often drawn to Menlyn for its diverse food options, benefit from the project's improved layout. Communal seating areas offer comfortable places to dine, socialize, and engage with vendors, creating an inviting space that encourages longer stays and repeat visits. These seating areas enhance the customer experience, making Menlyn Piazza an attractive destination for both locals and visitors.

Residents form an integral part of the community and stand to benefit from a well-organized, sustainable urban space. The project's emphasis on community-driven design, sustainable practices, and accessible amenities fosters a sense of belonging and ensures that Menlyn Piazza serves as a resource and gathering space for the surrounding neighborhood.



KNOWING THE USERS



USER MOVEMENT RESULTING IN CONGESTING ON THE SIDEWALKS

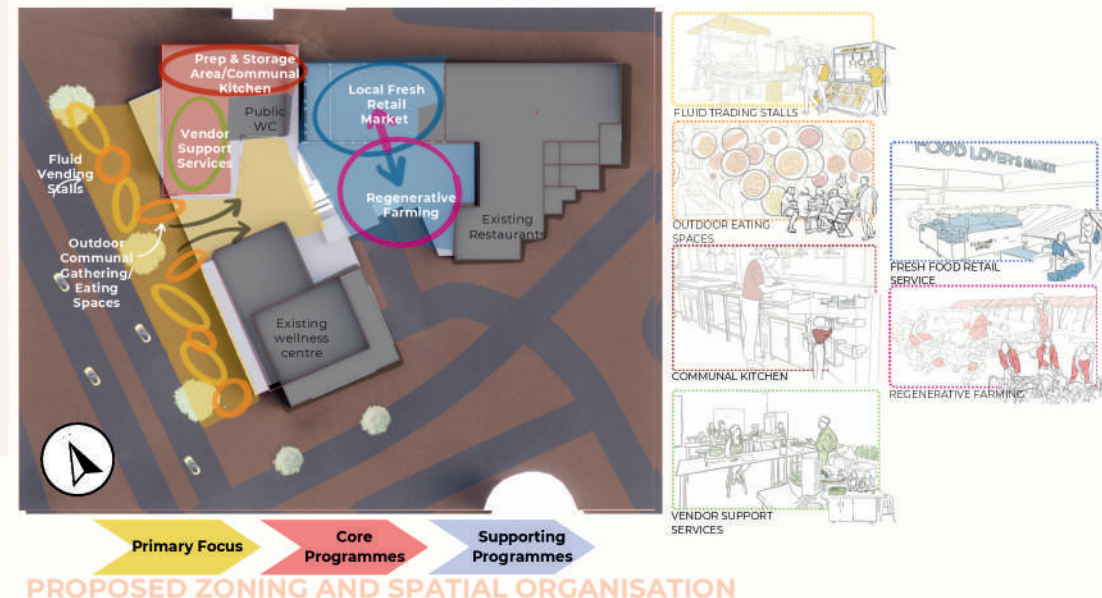
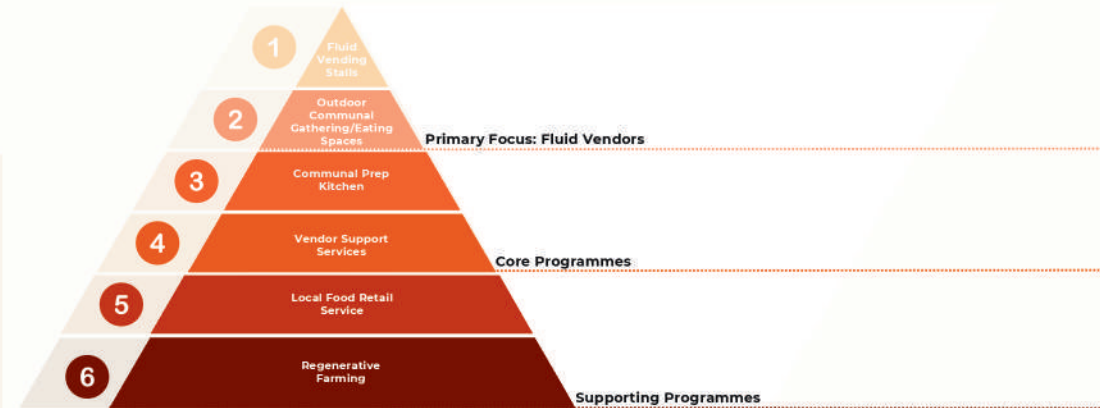
PROGRAMME: INTRODUCING THE PRODUCT - PROCESS-SERVICE SYSTEM

The proposed programme layout is based on a **Product-Service-Process (PPS) system**, which establishes a seamless flow from the public-facing sidewalk through to the core and supporting areas within Menlyn Piazza. This approach combines physical products (infrastructure), operational processes (workflow), and service-oriented functions to create a cohesive, sustainable, and user-centered environment. The PPS system divides the space into three primary zones: primary focus, core programmes, and supporting programmes. Each layer contributes to a circular, interconnected ecosystem that serves current needs while fostering sustainability, economic resilience, and community engagement. This structured flow enhances the functionality of the space, allowing each programme to complement and reinforce the others.

At the heart of the public-facing side of the project is the **primary focus** being the modular stalls and communal seating areas. Positioned at the sidewalk entrance, these elements attract foot traffic and create a welcoming front for Menlyn Piazza. The modular stalls are designed as versatile, physical products that allow vendors to adjust their space based on specific needs, such as displaying fresh produce, selling prepared meals, or arranging packaged goods. As part of the product component of the PPS system, these stalls provide not only essential infrastructure but also serve as an invitation for pedestrians to engage with local vendors, making this zone the liveliest part of the project.

The communal seating areas are arranged to promote social interaction, with flexible configurations adaptable to market days, events, or daily use. These seating areas encourage a sense of community and create gathering points where customers, vendors, and passersby can come together. They provide an integrated service that enhances user experience, helping build a vibrant, interactive public space that seamlessly connects with the vendor stalls.

Moving beyond the sidewalk entrance, the **core programmes** provide essential support services that aid vendors, enhance food safety, and cultivate skills. These programmes act as the primary process and service elements within the PPS system, ensuring the sustainability and growth of vendor operations. Housed in dedicated spaces, the core programmes support the activities of the primary focus zone. The shared prep kitchen provides vendors with a sanitary, fully equipped space for food preparation, storage and facilitating efficient operations. This facility exemplifies the process component of the PPS system, as it enables the workflow essential to food preparation, while simultaneously acting as a service by offering vendors access to infrastructure they might not otherwise have. Culinary Workshop: Located adjacent to the prep kitchen, the culinary workshop is designed for training and demonstrations, enabling vendors to improve their culinary skills and understanding of food safety practices. This workshop encourages continuous learning and innovation, reinforcing both the service and process aspects of the PPS system by equipping vendors with skills that enhance their product offerings.



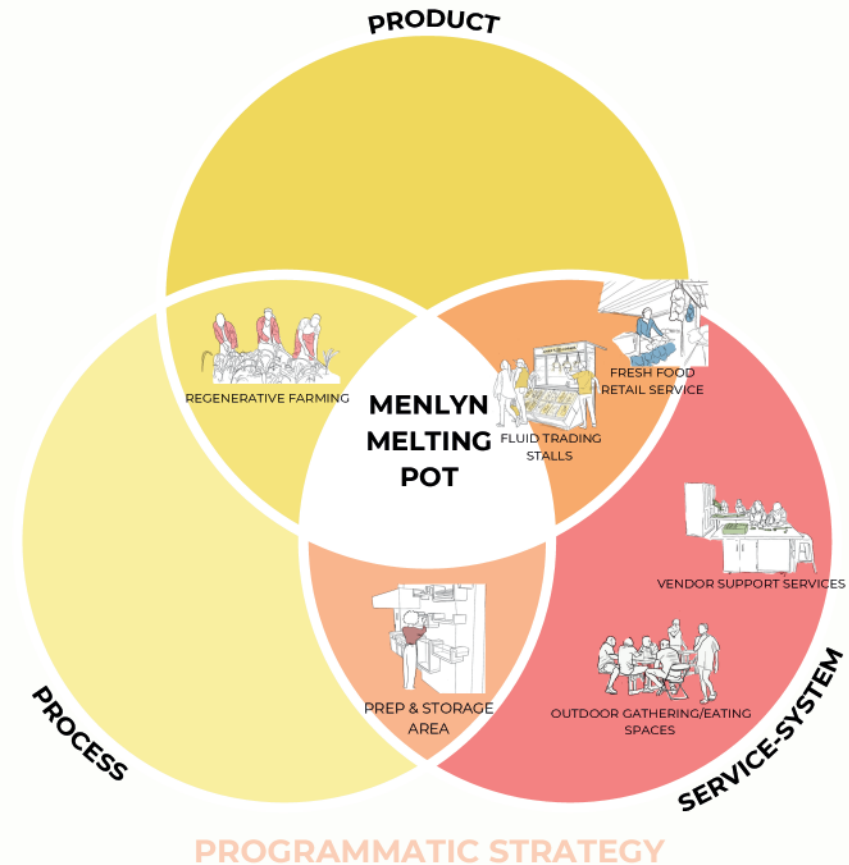
The Vendor Support Reception and Waiting Area functions as a hub for vendor inquiries, assistance, and support. It serves as a meeting point where vendors can gather, seek guidance, and interact with staff, making it a purely service-oriented part of the PPS system that provides a point of contact and community support for vendors. The learning hub provides training in business skills, marketing, and financial literacy, supporting vendors in building sustainable businesses. This dedicated space offers services like workshops and one-on-one mentorship, helping vendors develop essential business skills and fostering long-term economic sustainability.

The **supporting programmes**, located towards the back of the site, complete the circular flow by reinforcing both primary and core programmes. These programmes emphasise the product and process aspects of the PPS system and contribute to the overall ecosystem of Menlyn Piazza: Regenerative Farming Space is a sustainable farming area produces fresh, local produce that supplies both vendors and the fresh food market. As a product and process component, the regenerative farm creates a closed-loop system, converting organic waste into compost for reuse. This model of sustainable urban agriculture supports food security, reduces environmental impact, and demonstrates how food production and waste management can be integrated within an urban setting. Local Fresh Retail Market acts as both a product and service, the fresh food market provides a platform for vendors to sell goods produced on-site, reducing transportation costs and supporting local trade. This market encourages the local community to buy fresh, sustainably produced food, aligning with the project's commitment to healthy, eco-conscious practices.

THE PRODUCT-SERVICE-PROCESS SYSTEM BREAKDOWN

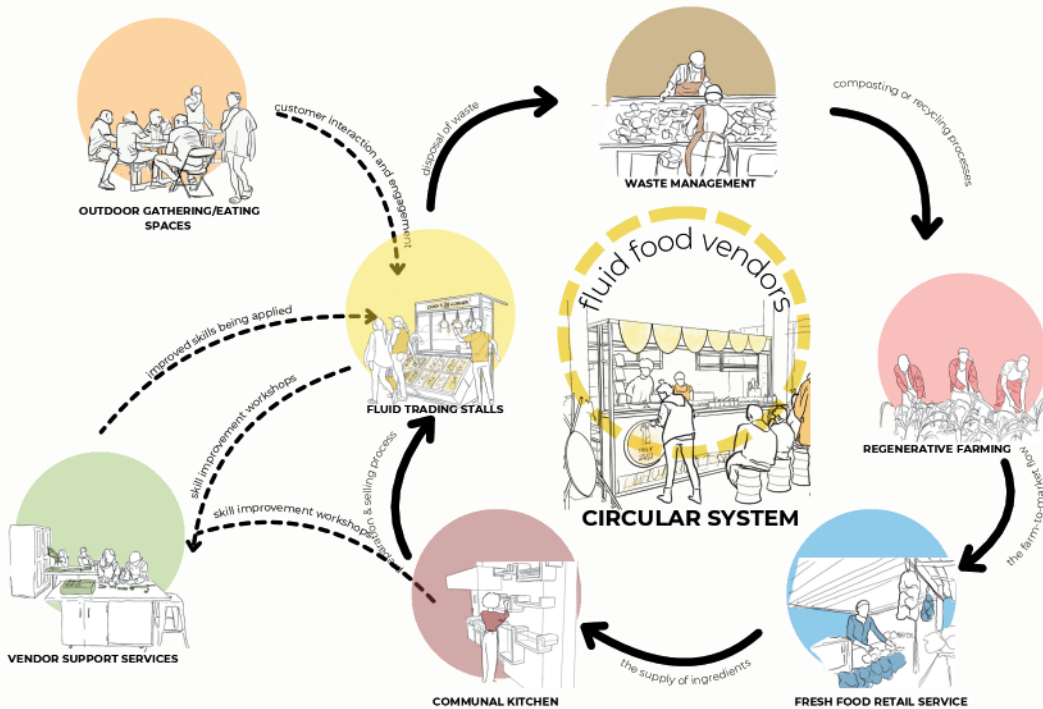
The programmes at Menlyn Piazza are categorised within the product-service-process system, with some programmes spanning multiple categories due to their multifunctional roles. This breakdown highlights how each component contributes to the project's circular design:

- **Product & Service:** The fresh food retail market and vendor modular stalls function as both tangible products that facilitate trade and as services that meet community needs, offering platforms for local commerce and interaction.
- **Product & Process:** Regenerative farming operates as both a product-generating area and a process-oriented system, producing food and managing organic waste through composting, thereby closing the loop on food production and waste management.
- **Process & Service:** The prep kitchen supports both process (enabling food preparation) and service (providing a hygienic food handling space for vendors).
- **Service:** Programmes such as culinary workshops, the entrepreneurship learning hub, and communal dining are purely service-oriented, focused on skill-building, customer engagement, and community development.



CREATING A CIRCULAR ECOSYSTEM

The product-service-process system within Menlyn Piazza creates a circular ecosystem where each programme supports the others, promoting resilience, sustainability, and growth. Vendors connect with regenerative farming not only for fresh produce but also for waste management, reinforcing a sustainable cycle of production, processing, and service. Vendor support workshops and community gathering spaces enhance interactions at the stalls, fostering engagement and customer loyalty. This integrated, circular approach ensures that resources are efficiently utilised, vendors have access to essential infrastructure, and the community benefits from a healthier, more vibrant public space.



FOOD CYCLE AS THE FOUNDATION

PROJECT VISION

The project envisions a cohesive, adaptable, and community-centered space that celebrates fluid food vendors while meeting the needs of all users. This vision was guided by the integration of the Design Integration Tool (DIT) from my research and the Design Process Development (DPD), which involved a detailed analysis of the site, users, and existing conditions.

The DIT (Research) framework, based on business process, service, and spatial design principles, led to a user-centered, programmatically responsive approach. Through a structured, six-step process, the DIT framework shaped each design decision to enhance user experience and create a vibrant, inclusive environment. This is evident in the modular stalls, communal seating, and support spaces, each tailored to the specific needs of vendors, pedestrians, and other users to foster a flexible, welcoming public space.

The DPD (Design) analysis provided further specificity, focusing on spatial dynamics, user interactions, and existing conflicts on the site. This analysis highlighted opportunities to alleviate congestion, ensure safety, and designate zones for each user group. Recognising Menlyn Piazza's potential as a bridge between Menlyn Park and Menlyn Maine, the DPD guided the strategic placement of key elements like stalls, pathways, and taxi bays to create a seamless flow and enhance accessibility. Together, DIT and DPD shaped a design that empowers vendors, welcomes the community, and promotes harmonious urban flow. This approach ensures that the space is both functional and inclusive, transforming Menlyn Piazza into a resilient, thriving urban destination.

THEORETICAL FRAMEWORK

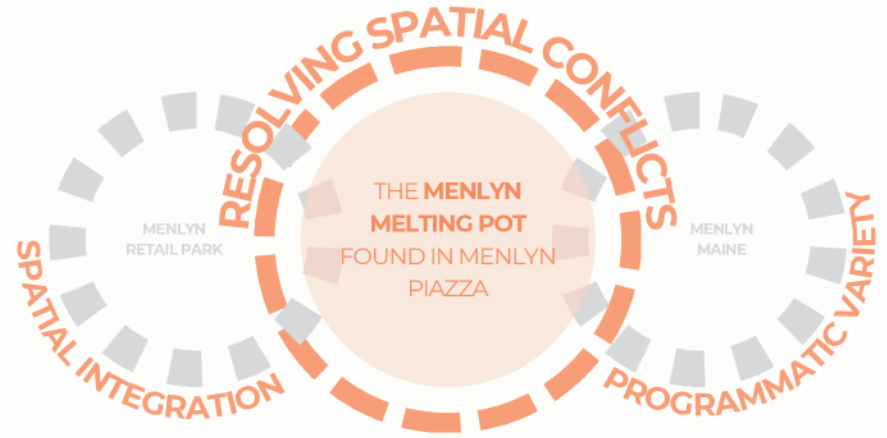
The design approach is grounded in the **People-Place-Programme (PPP) framework**, which ensures that each design element is aligned with the needs of the user, the characteristics of the space, and the functions it will support. This framework draws from business process design, service design, and interior spatial design principles, which were analysed in my research (DIT) to develop a comprehensive, user-centric design methodology. The six-step process within the PPP framework focuses on creating a space that is not only functional but also emotionally engaging, aiming to transform Menlyn Piazza into a vibrant and inclusive urban destination.

The project builds upon three key theoretical concepts: urban fluidity, modularity, and sustainable design principles. These principles are combined to address the complexities of an fluid vendor space within a vibrant urban environment.

- 1. Urban Fluidity:** This concept acknowledges the need for flexibility and adaptability in urban design, especially in spaces with multiple, overlapping users. Urban fluidity ensures that the design can accommodate shifting flows and densities, adapting to peak hours, market days, and everyday interactions. The PPP framework applies urban fluidity by designing adaptable zones that enable fluid transitions between different activities, ensuring that each user group can coexist. This fluid approach allows for flexible vendor configurations and adaptable seating layouts, supporting a dynamic, interactive public space.
- 2. Modularity:** Modularity in design offers a flexible, component-based approach that can be customised and reconfigured based on changing needs. By designing modular stalls and seating areas, the proposal allows vendors and visitors to adjust the space to suit specific requirements. This modular approach also makes the space resilient, accommodating future growth or alterations without major structural changes. Rooted in the PPP framework, modularity reinforces the "programme" aspect, creating a responsive layout where vendors can modify their spaces, enhancing both functionality and aesthetic cohesion.
- 3. Sustainable Design Principles:** Sustainability is at the core of the Menlyn Melting Pot proposal. The design incorporates sustainable practices such as regenerative farming, waste reduction, and resource-sharing initiatives, creating a circular ecosystem that benefits both vendors and the community. By integrating green infrastructure, recycling systems, and resource-efficient materials, the project promotes environmental responsibility and reduces its ecological footprint. Sustainability is addressed in all aspects of the PPP framework, ensuring that place-making is both ecologically and socially sustainable. This approach reflects a commitment to long-term resilience, allowing the space to evolve sustainably with the community's needs.

PROJECT FRAMEWORK

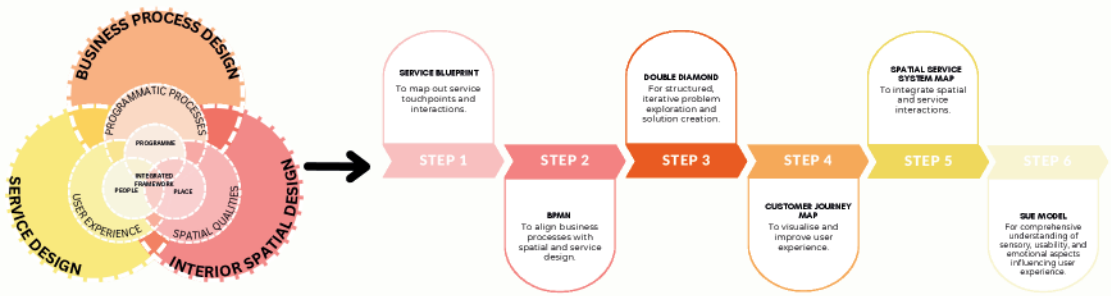
The Project Framework for Menlyn Melting Pot spans the entire stretch between Menlyn Park and Menlyn Maine, a vibrant urban corridor where the flow of pedestrians, taxis, and informal food vendors often clash due to unstructured spaces. Currently, the sidewalk struggles to accommodate its diverse users, resulting in congestion, safety issues, and conflicts that detract from the area's potential. The framework aims to address these conflicts by introducing structured spaces that support each user's needs while fostering a thriving community environment. Key components within this framework include new street design, regenerative farming areas, a retail fresh market, and a hub for local farmers to connect with consumers. Existing features, such as two permanent restaurants and the wellness center, are integrated with new facilities like the vendor stalls, shared support building, entrepreneurship workshops, and communal seating areas. Together, these elements redefine Menlyn Piazza as a cohesive, supportive space that balances commerce, community, and sustainability, transforming the fragmented sidewalk into a vital link connecting people and supporting local economies.



FRAMEWORK OVERVIEW

PROJECT FOCUS

The Project Framework for Menlyn Melting Pot spans the entire stretch between Menlyn Park and Menlyn Maine, a vibrant urban corridor where the flow of pedestrians, taxis, and informal food vendors often clash due to unstructured spaces. Currently, the sidewalk struggles to accommodate its diverse users, resulting in congestion, safety issues, and conflicts that detract from the area's potential. The framework aims to address these conflicts by introducing structured spaces that support each user's needs while fostering a thriving community environment. Key components within this framework include new street design, regenerative farming areas, a retail fresh market, and a hub for local farmers to connect with consumers. Existing features, such as two permanent restaurants and the wellness center, are integrated with new facilities like the vendor stalls, shared support building, entrepreneurship workshops, and communal seating areas. Together, these elements redefine Menlyn Piazza as a cohesive, supportive space that balances commerce, community, and sustainability, transforming the fragmented sidewalk into a vital link connecting people and supporting local economies.



THEORETICAL FRAMEWORK

SPATIAL DESIGN DEVELOPMENT & INTEGRATED TECHNOLOGY

The **spatial development** centers around creating a cohesive, functional, and adaptable environment that supports fluid food vendors while fostering a welcoming public space. The design carefully integrates key elements, beginning with the modular stalls and communal seating areas, both of which form the primary interface between vendors and the community along the redesigned sidewalk. Positioned at the site's entrance, the modular stalls provide flexible, structured spaces tailored to each vendor's needs, whether for fresh produce, packaged goods, or prepared foods. Constructed with adaptable framing and secure storage, these stalls ensure that vendors have the infrastructure to operate safely and efficiently.

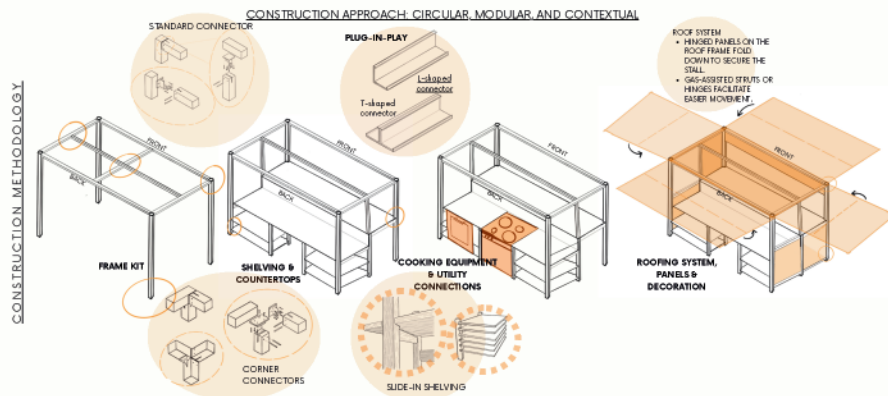
The communal seating directly complements the stalls, offering various configurations that support social interaction and casual dining. Designed with shading elements that use the construction of the modular stalls, the seating areas create comfortable zones for gathering, encouraging longer visits and promoting interaction between vendors and customers. These shaded, adaptable seating spaces also visually unify the stalls and the public areas, reinforcing a cohesive aesthetic that is both functional and inviting.

Moving into the core of the site, vendor support services provide essential infrastructure to empower and sustain vendor operations. The prep kitchen offers a sanitary, fully equipped area for food preparation, while the adjacent culinary workshop provides opportunities for skill development through training sessions and demonstrations. This supportive environment continues with the reception and waiting area, where vendors can access assistance, seek guidance, or take a break. The entrepreneurship learning hub further strengthens the vendor community by offering training in business management, financial literacy, and marketing, equipping vendors with the skills needed to grow sustainable enterprises.

Subtly extending the site's functional scope, the design incorporates a regenerative farming space and a fresh food retail market. These supporting elements create a circular ecosystem that supplies fresh, locally grown produce to vendors, while the market offers a retail platform for both vendors and local farmers to engage directly with the community. Together, these elements create a well-organized, multifunctional space that enhances Menlyn Piazza's role as a vibrant, inclusive urban destination, ensuring seamless flow, accessibility, and a strong sense of community connection.

The Menlyn Melting Pot project integrates adaptable technologies and design strategies to create a cohesive public space for fluid food vendors. At its core is a kit-of-parts approach in the modular stalls, which include structural frames, foldable roofs, plug-and-play utilities, and customizable storage. This modular setup allows vendors to easily adjust or reconfigure their stalls to suit different needs, from displaying fresh produce to preparing food, with quick connections for gas, electricity, and water. Supporting programmes—such as the prep kitchen, culinary workshop, and entrepreneurship learning hub—act as essential components of this kit-of-parts system, providing vendors with practical infrastructure, business training, and skill development. These spaces feature an open ceiling design for ventilation and easy utility access, reflecting the project's flexible, industrial aesthetic. Together, the stalls and support services form an interconnected system that equips vendors to operate sustainably and build their businesses.

A unified material palette of locally sourced, recycled materials like lightweight metal, wood, and stone blends the existing site with new elements, reinforcing the project's eco-friendly goals. Additionally, the regenerative farming space and fresh food retail market contribute to a sustainable, circular ecosystem by providing fresh produce and composting organic waste, reducing transportation needs and carbon footprint. Finally, foldable roof structures over stalls and communal seating offer shade and weather protection, ensuring usability year-round. This modular, technology-driven design enhances both functionality and visual coherence, creating a flexible, resilient space that serves the community's evolving needs.



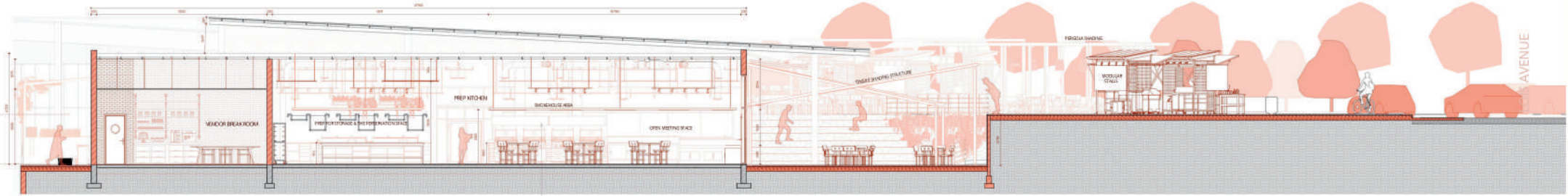


The Menlyn Melting Pot's Design Focus Plan illustrates the strategic layout of key elements that support fluid food vendors and enhance public interaction. It highlights the designated zones for modular stalls and communal seating, which create a lively, accessible space for vendors and customers. The plan also shows the shared prep kitchen and vendor support services—including the culinary workshop, reception area, and entrepreneurship hub—that provide essential infrastructure, skill-building opportunities, and business support for vendors. Overall, the focus plan showcases an organized, adaptable public space that promotes safety, accessibility, and community engagement within Menlyn Piazza.

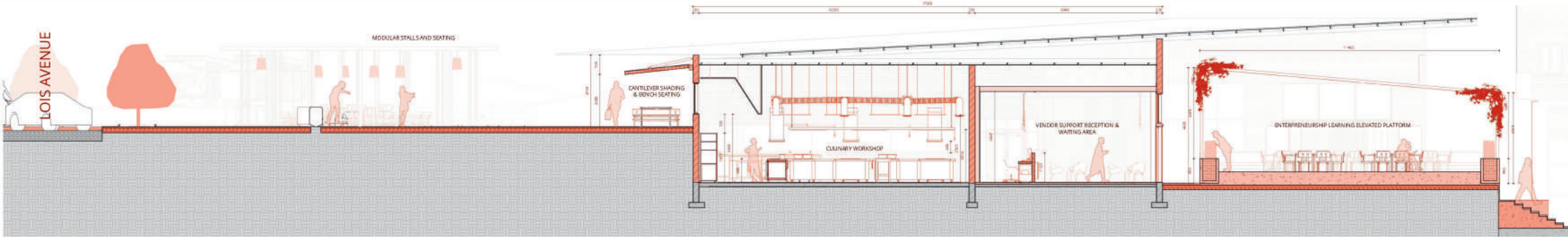


MENLYN MELTING POT FLOOR PLAN - DESIGN FOCUS

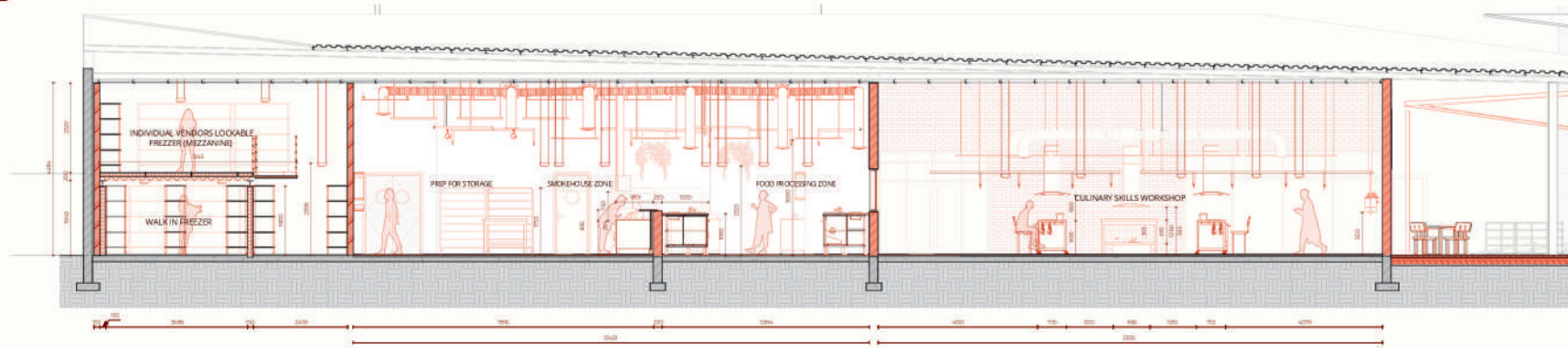
SCALE 1:100



SECTION A-A



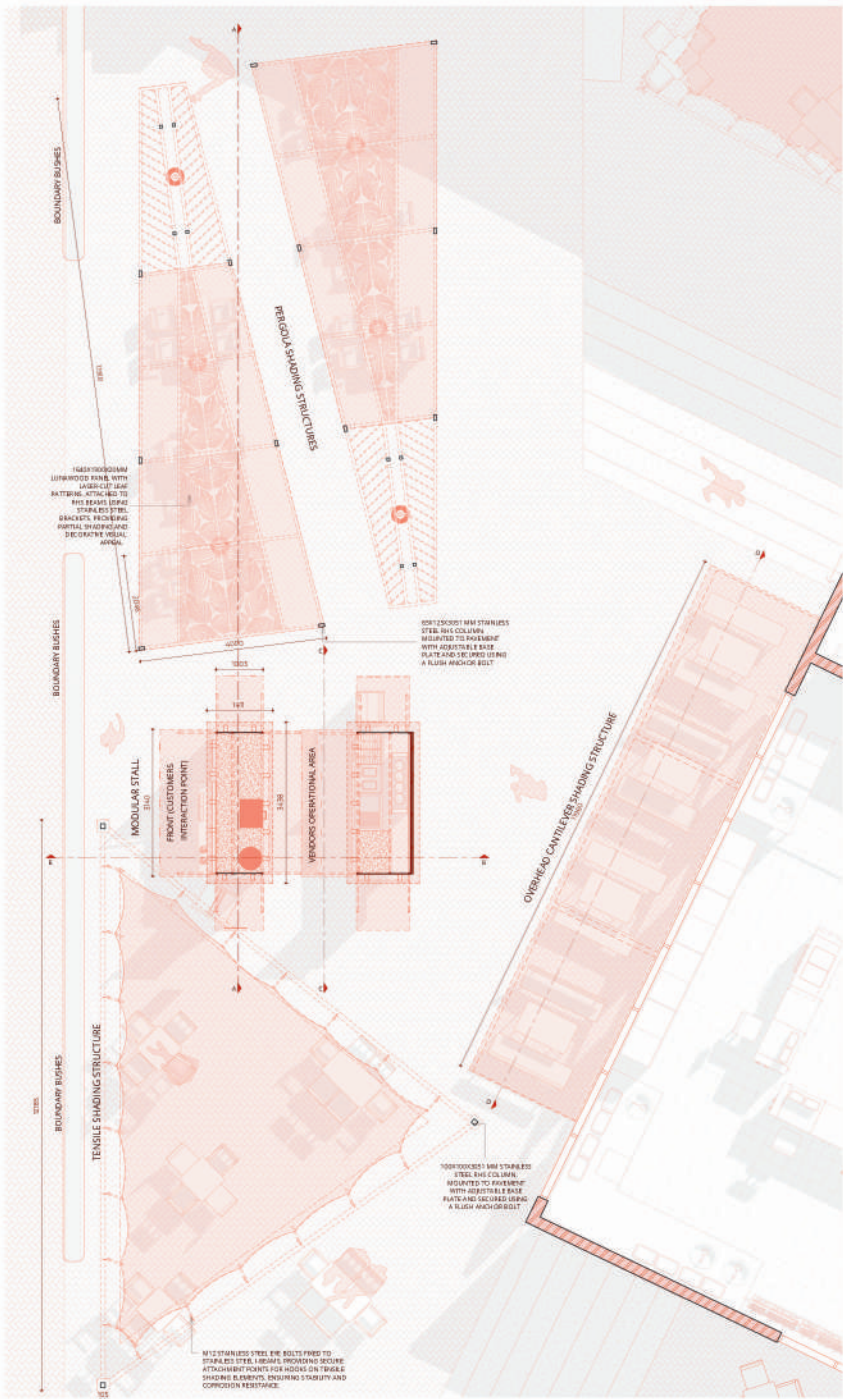
SECTION B-B



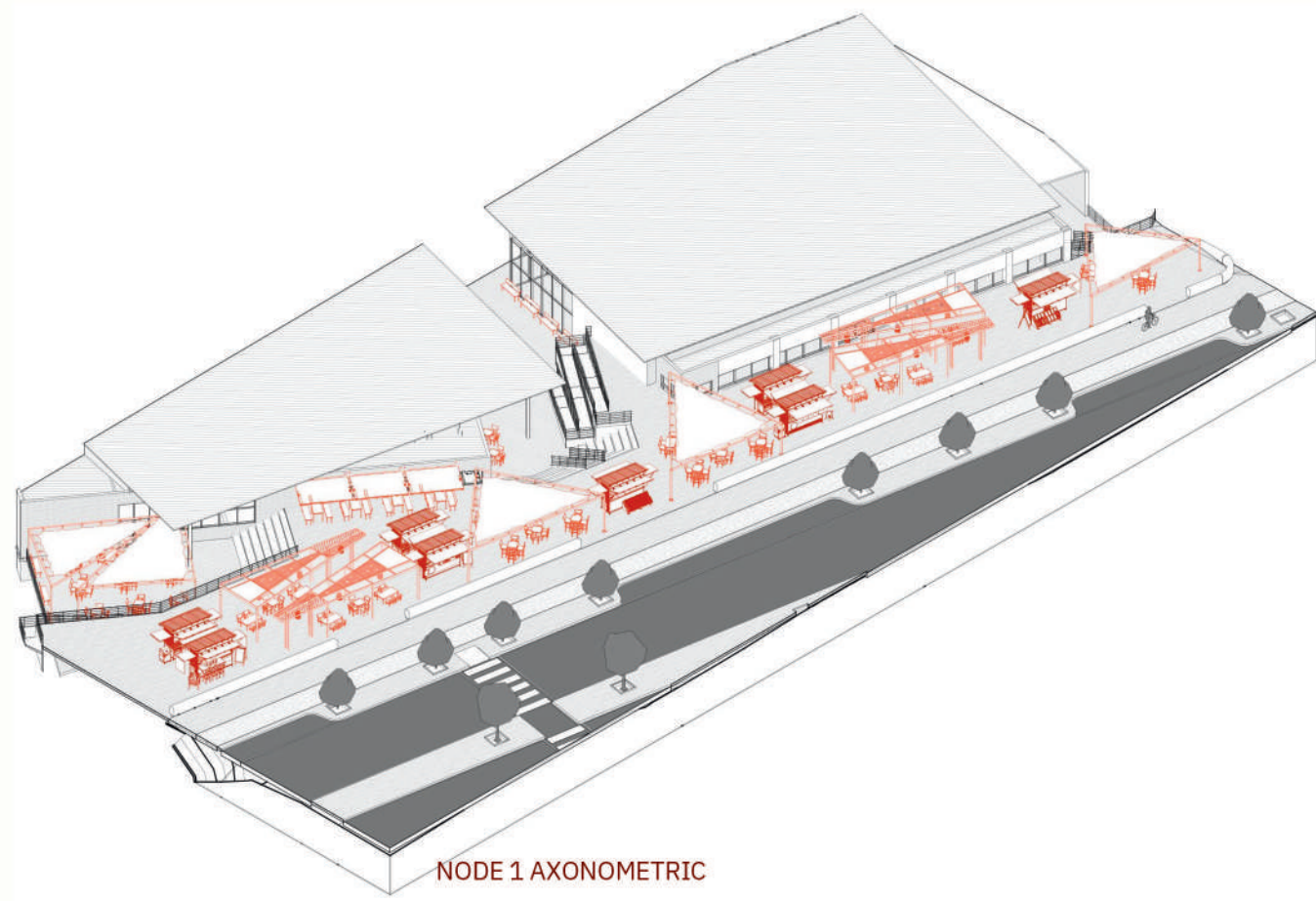
SECTION C-C

Sections A-A, B-B, and C-C illustrate the spatial and structural relationships among the nodes within the Menlyn Melting Pot. Section A-A shows the connection between Node 1 (modular stalls and communal seating) and Node 2 (shared prep kitchen), emphasizing the seamless flow between vendor spaces and preparation areas. Section B-B highlights Node 1 in relation to Node 3 (additional vendor support services, including the culinary workshop and entrepreneurship hub), where those in Node 2 have a visual connection down into the culinary workshop in Node 3. Lastly, Section C-C displays the interaction between Node 2 and Node 3, underscoring how structural considerations facilitate visual and functional continuity across the nodes, creating an integrated, supportive environment for vendors and visitors.

MENLYN MELTING POT SECTIONS SCALE 1:50



 **NODE 1 PLAN**
SCALE 1:50



NODE 1 AXONOMETRIC

This node forms the primary interface between vendors and the public, offering modular stalls that provide secure, flexible setups for fluid food vendors to display and sell their goods. The adjacent communal seating invites customers to dine and interact comfortably within the space. Together, the stalls and seating create a vibrant, adaptable area that enhances vendor visibility and fosters social engagement.

NODE 1: MODULAR STALL AND COMMUNAL SEATING DESIGN

CRITICAL REFLECTION AND CONCLUSION

The Menlyn Melting Pot project has effectively addressed the spatial, social, and economic challenges that previously plagued Menlyn Piazza. Using a modular, flexible design rooted in the People-Place-Programme framework, the project establishes organized zones for fluid food vendors, pedestrians, cyclists, and taxis, alleviating congestion and minimizing conflicts. Through a cohesive kit-of-parts system, elements such as modular stalls, communal seating, and vendor support services create a supportive infrastructure that enhances vendor operations and overall user experience.

A core strength of the project is its sustainable approach, incorporating regenerative farming, a closed-loop food system, and locally sourced materials. This sustainable framework not only reduces the project's environmental footprint but also fosters a culture of responsible resource use and local food production. Additionally, support services like the prep kitchen, culinary workshops, and entrepreneurship hub empower vendors with skill development and business growth opportunities, promoting long-term economic resilience for both vendors and the community.

Designing a space that meets the needs of diverse users presented challenges, especially in balancing the requirements of each group. However, the project's adaptability and focus on inclusivity have resulted in a well-integrated environment where each user has a defined and functional place. By reimagining Menlyn Piazza as a structured, community-driven support system for informal vendors, Menlyn Melting Pot encourages a dynamic urban environment that may inspire similar transformations elsewhere.

Overall, Menlyn Melting Pot sets a new standard for sustainable, inclusive urban design. By fostering a vibrant, organized public space that supports fluid food vendors, the project contributes to social and economic vitality and stands as a model for urban resilience. This project is more than a physical redesign; it represents a lasting, adaptable urban space that will continue to serve and grow with the community.

REFERENCES

- Aliyu, A. et al. 2016. 'A review of post-occupancy evaluation as a tool and criteria for assessing building performance', in Academic Conference on Agenda for Sub-Sahara Africa. Gwagwalada, Abuja FCT-Nigeria. Available at: https://www.researchgate.net/publication/303382704_A_REVIEW_OF_POST-OCCUPANCY_EVALUATION_AS_A_TOOL_AND_CRITERIA_FOR_ASSESSING_BUILDING_PERFORMANCE/citations (Accessed: 3 June 2024).
- Amoozad Mahdiraji, H., Hafeez, K. and Hajiagha, S. 2023. 'Business Process Transformation in Financial Market: A Hybrid BPM-ELECTRE TRI for Re-Designing a Securities Company in the Iranian Stock Market', Department of Management, Khatam University [Preprint].
- Archer, L.A. (2019). 'Research methodology: A step-by-step guide for beginners' (5th. ed.). Journal of Latinos and Education, pp. 22, 425–426.
- Ashour, A. & Rashdan, W. 2023. 'Smart Technologies in Interior Design', The International Journal of Designed Objects, 18(1), pp. 39–59. Available at: <https://doi.org/10.18848/2325-1379/CGP/v18i01/39-59>.
- Babapour Chafi, M. and Cobaleda-Cordero, A. 2021. 'Methods for eliciting user experience insights in workplace studies: spatial walkthroughs, experience curve mapping and card sorting', Emerald Publishing Limited [Preprint]. Available at: <https://www.emerald.com/insight/content/doi/10.1108/JCRE-12-2020-0069/full/html>
- Bouncken, R., Aslam, M. and Qiu, Y. 2020. 'Coworking spaces: Understanding, using, and managing sociomateriality', Business Horizons, 64(1). Available at: <https://doi.org/10.1016/j.bushor.2020.09.010>.
- De Rosa, A. 2022. 'S+S Spatial Design + Service Design'. Santarcangelo di Romagna: Maggiore Editore. Available at: https://re.public.polimi.it/retrieve/f5492541-643a-47c9-95d8-3520ac11ed90/Annalinda%20De%20Rosa_S%2BS.%20Spatial%20Design%20%2B%20Service%20Design..pdf (Accessed: 21 March 2024).
- Ediae, O., Abeng, F. and Egbudom, J. 2022. 'User Experience of Architectural Promenade in Art and Cultural Centres in Calabar, Crossriver State, Nigeria', 3rd International Conference on Energy and Sustainable Environment [Preprint]. Available at: <https://doi.org/doi:10.1088/1755-1315/1054/1/012029>.
- Gibberd, J. (2002). The Sustainable Building Assessment Tool Assessing How Buildings Can Support Sustainability in Developing Countries. Built Environment Professions Convention: Johannesburg.
- Juliá Nehme, B. et al. 2023. 'Assessing Spatial User Experience for Design Guidelines: A Comparative Study of Outpatient Waiting Rooms with Conventional Versus Modern Features', HERD Health Environments Research & Design Journal, 16. Available at: <https://doi.org/10.1177/19375867231163338>.
- Juliá Nehme, B. et al. 2023. 'Assessing Spatial User Experience for Design Guidelines: A Comparative Study of Outpatient Waiting Rooms with Conventional Versus Modern Features', HERD Health Environments Research & Design Journal, 16. Available at: <https://doi.org/10.1177/19375867231163338>.
- SANS 2021. SANS 10400-XA: (2021): The application of the National Building Regulation : Part X: Environmental sustainability and Part XA: energy usage in Buildings.

ABSTRACT