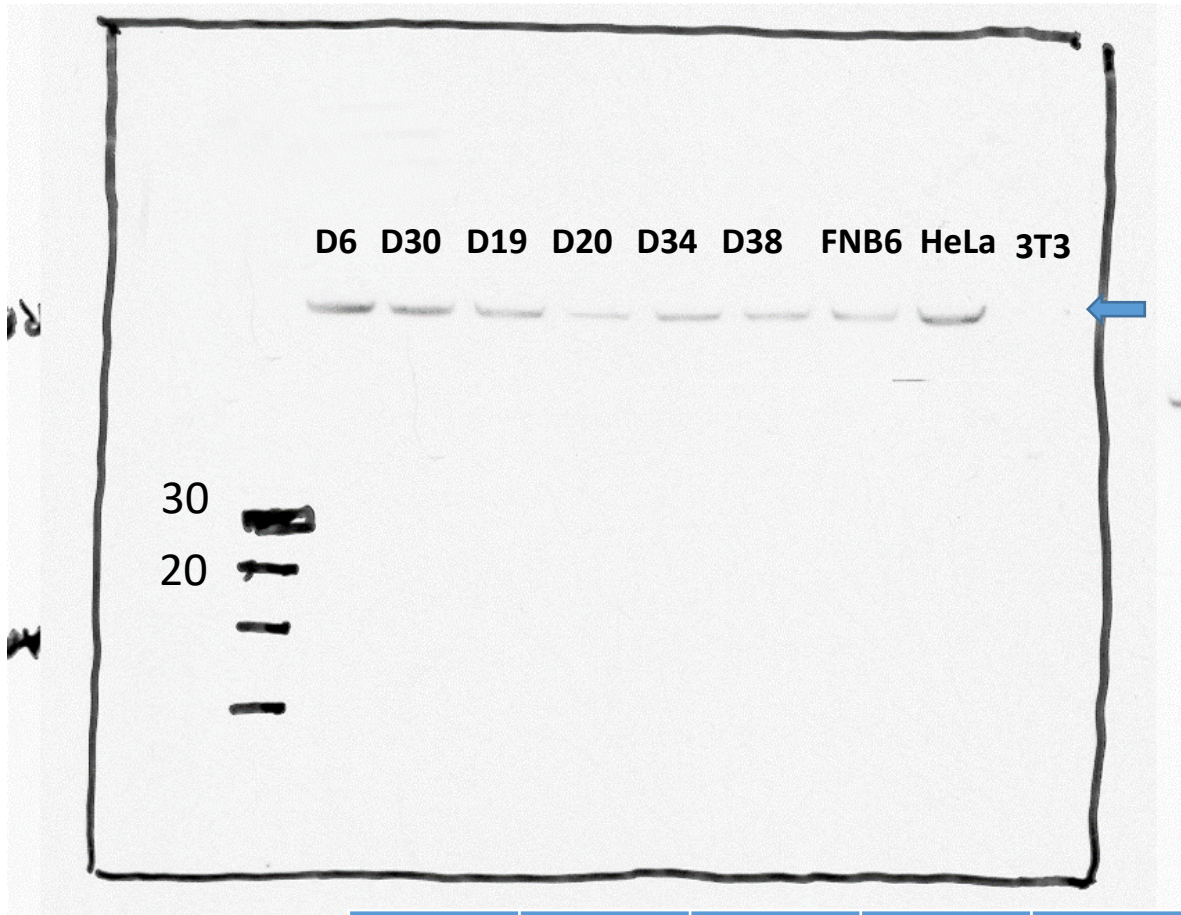
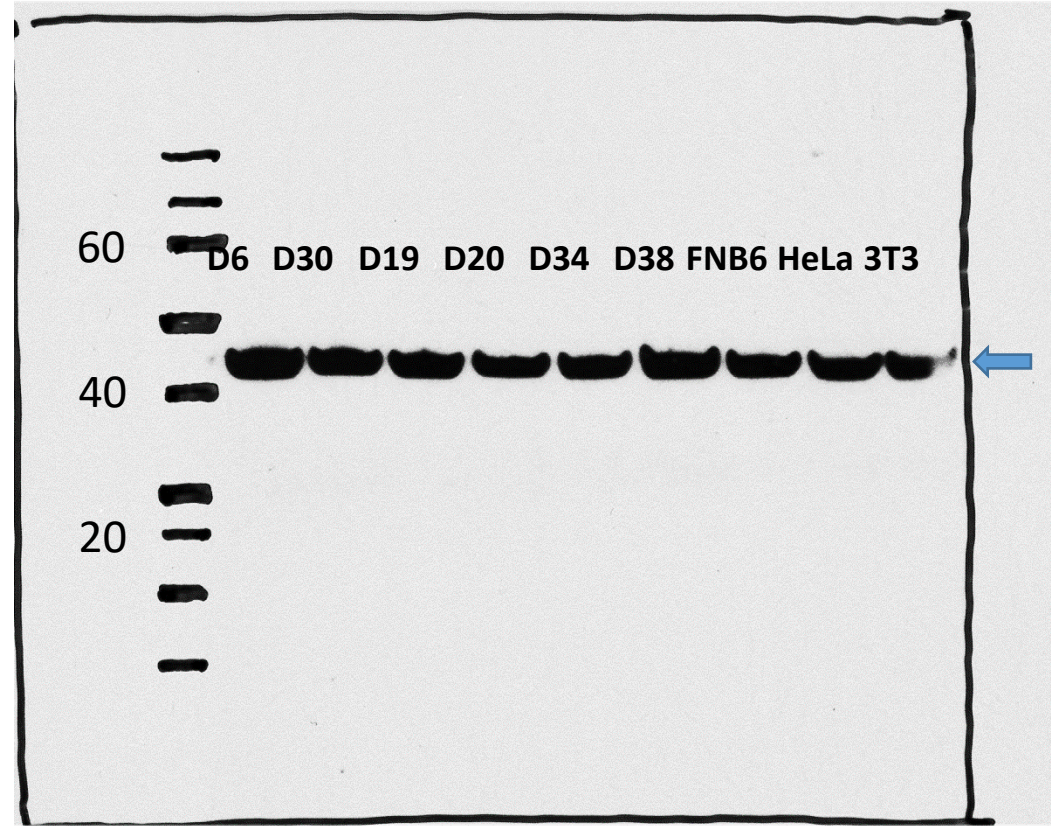


Original blots for figure 1B – various exposures, with densitometry relative to B actin.

RAR β

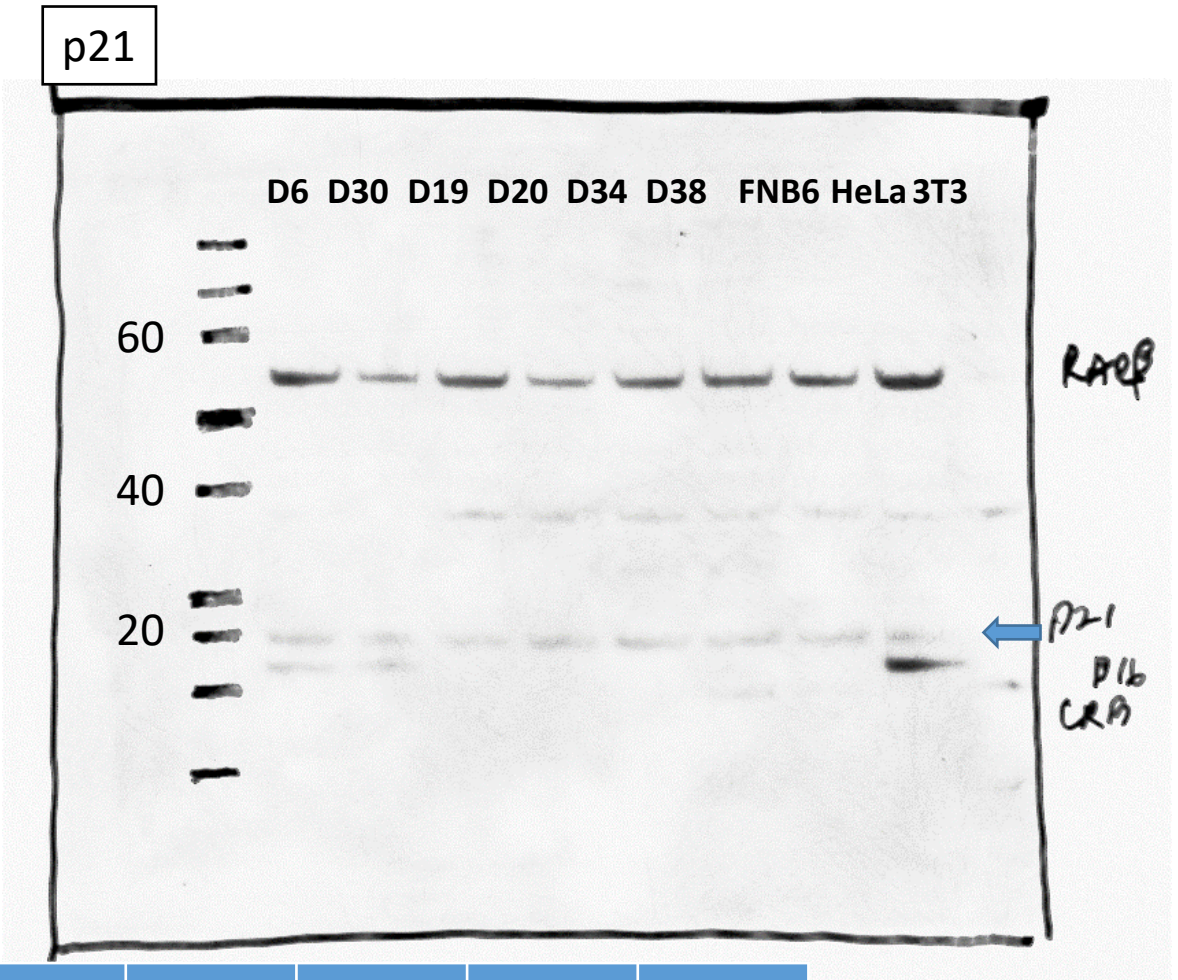
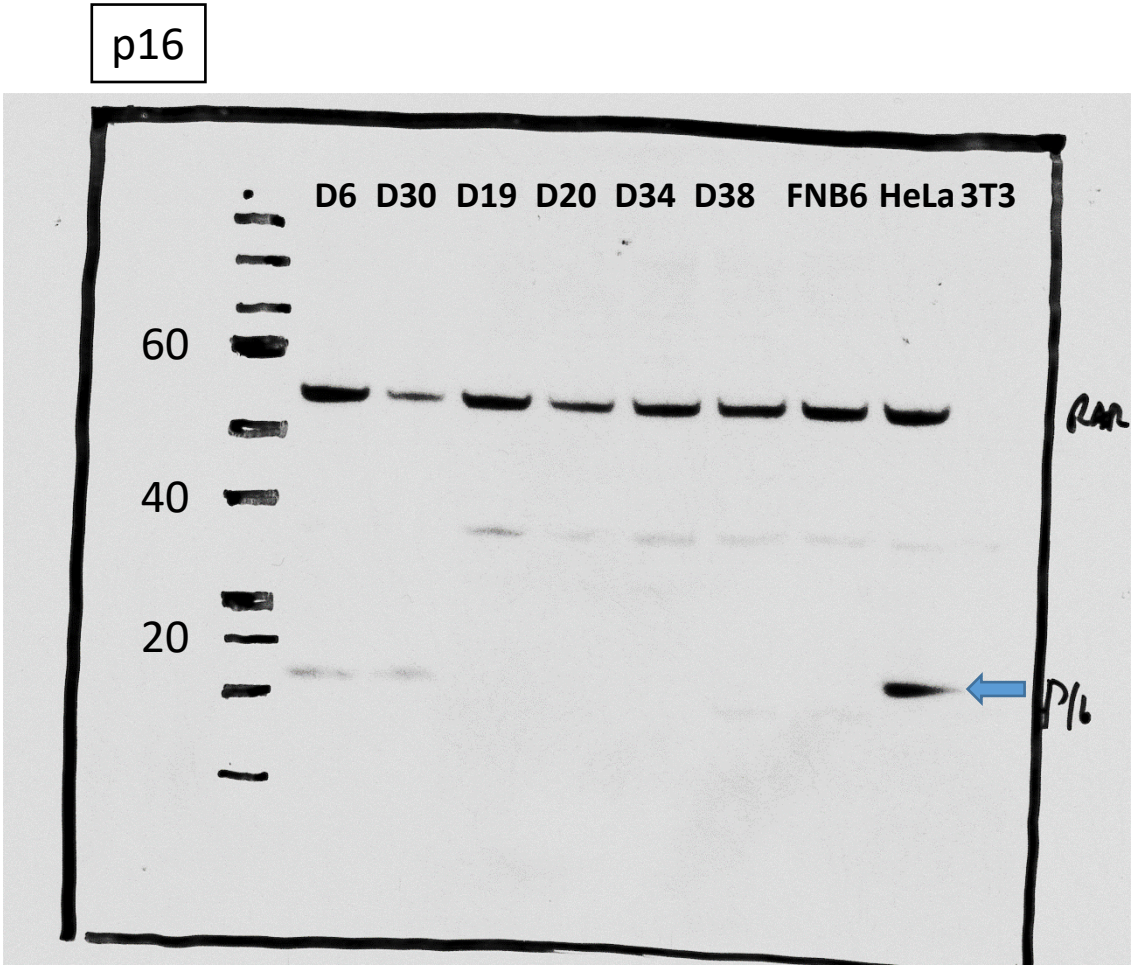


β actin



	D6	D30	D19	D20	D34	D38	FNB6	HeLa	i3t3
RARB	0.14	0.13	0.08	0.04	0.07	0.05	0.05	0.17	0.01

Original blots for figure 1B ctd, with densitometry relative to B actin

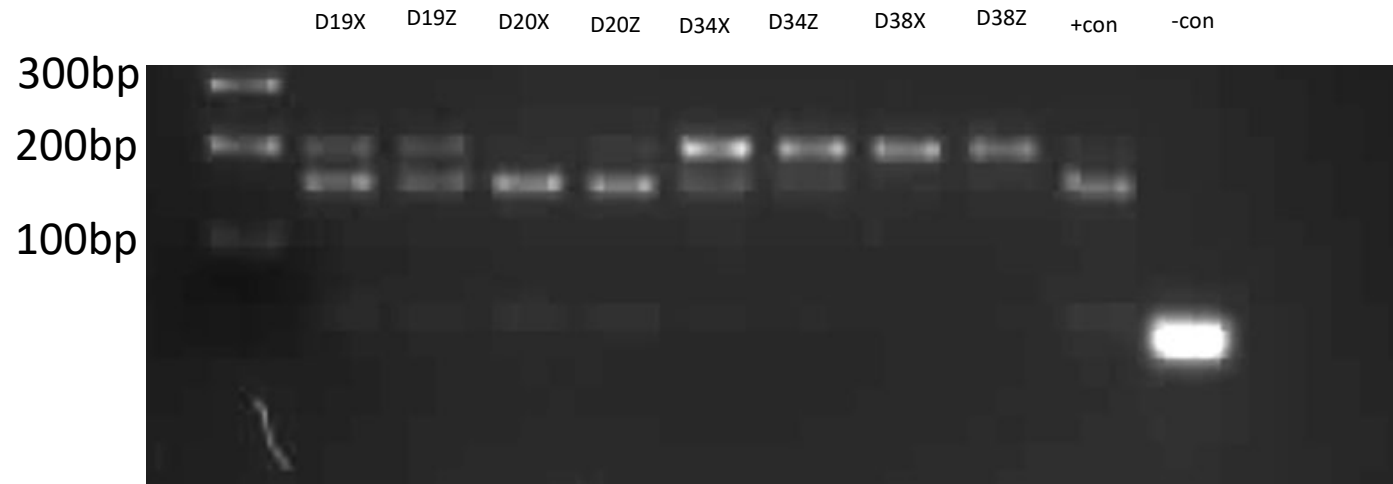


	D6	D30	D19	D20	D34	D38	FNB6	HeLa	i3t3
p16	0.07	0.05	0.02	0.02	0.01	0.01	0.02	0.41	0.01
p21	0.05	0.04	0.06	0.03	0.08	0.06	0.08	0.06	0.01

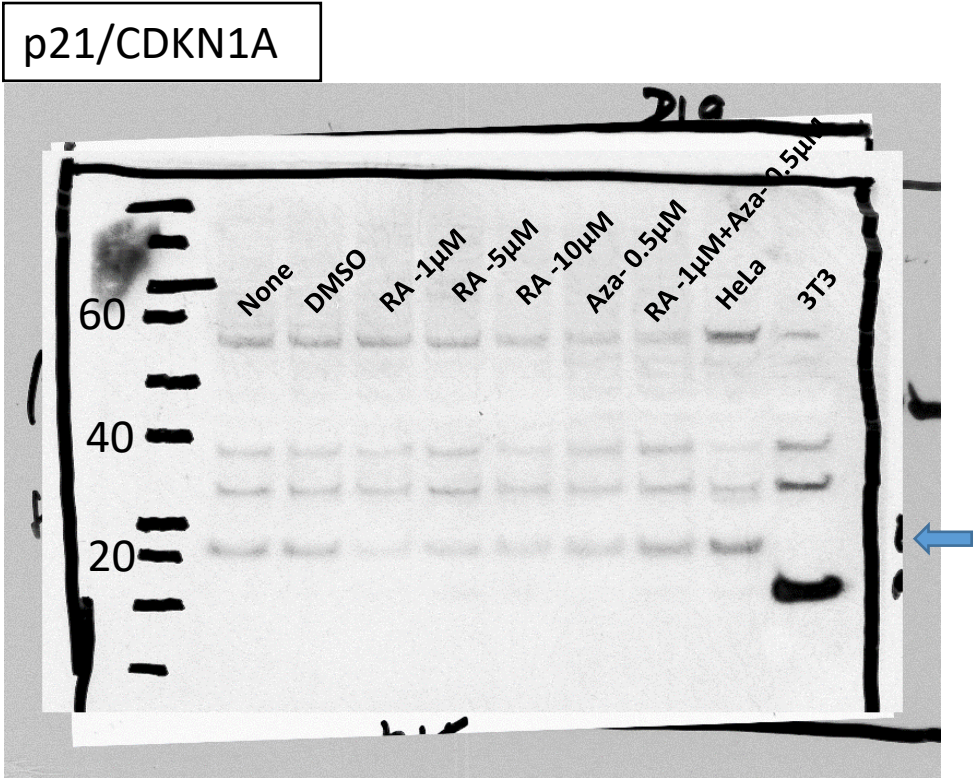
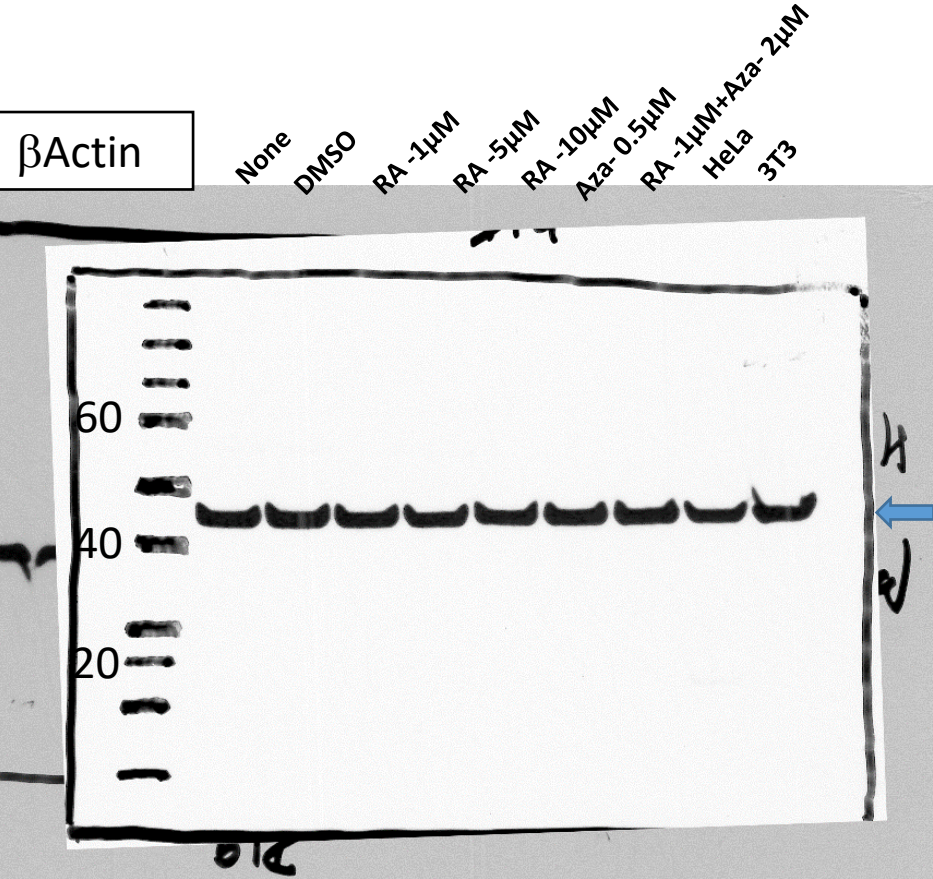
Original gels for figure 2.



Original gels for figure 2



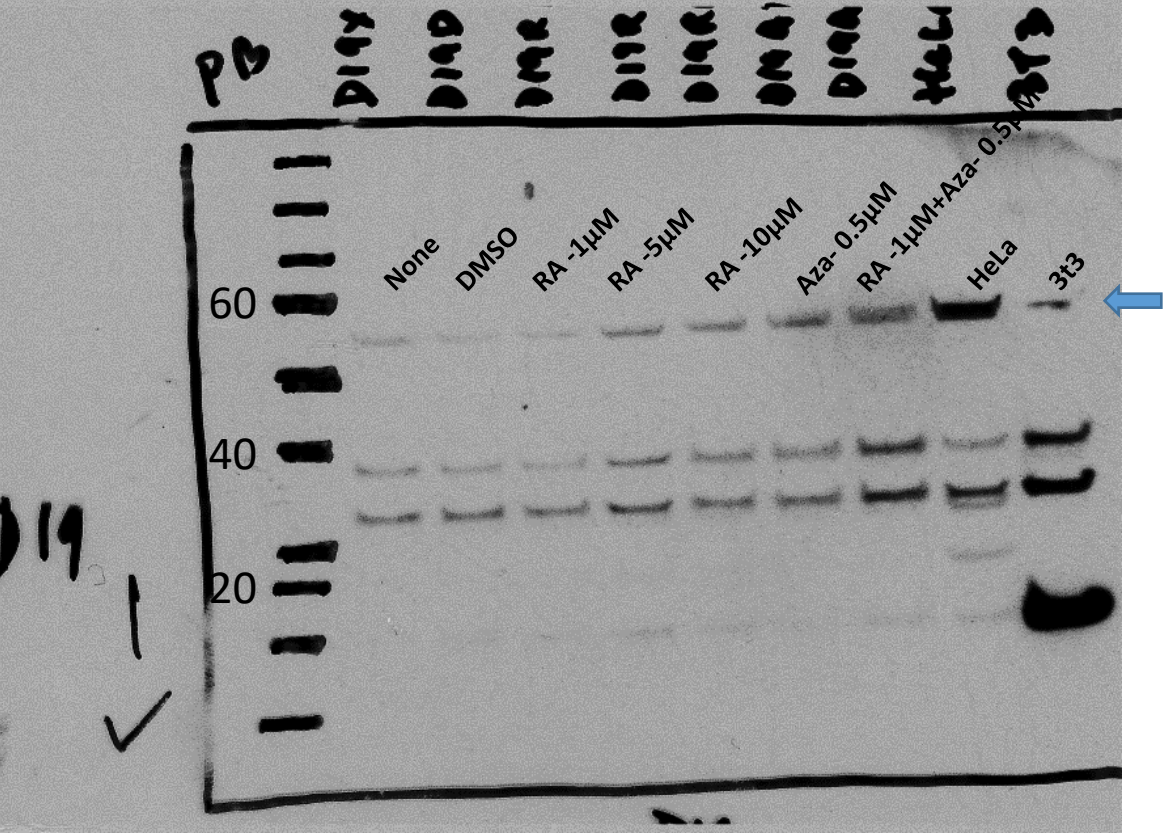
Original blots for figure 3B: D19, with densitometry relative to B actin



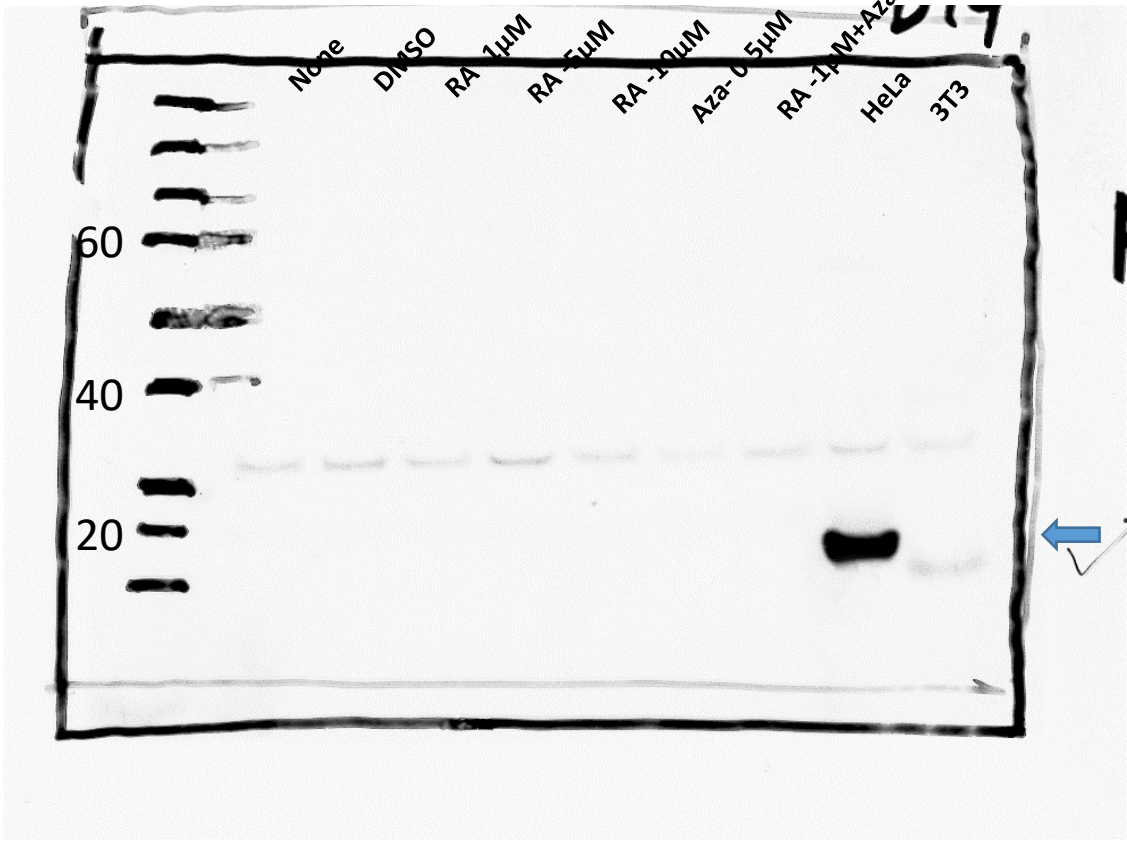
	DMSO	No Rx	RA 1uM	RA 5uM	RA10uM	Aza 0.5uM	RA+Aza	HeLa	i3t3
p21	0.13	0.10	0.03	0.07	0.07	0.10	0.18	0.31	0.00

Original blots for figure 3B: D19, with densitometry relative to B actin

RARβ

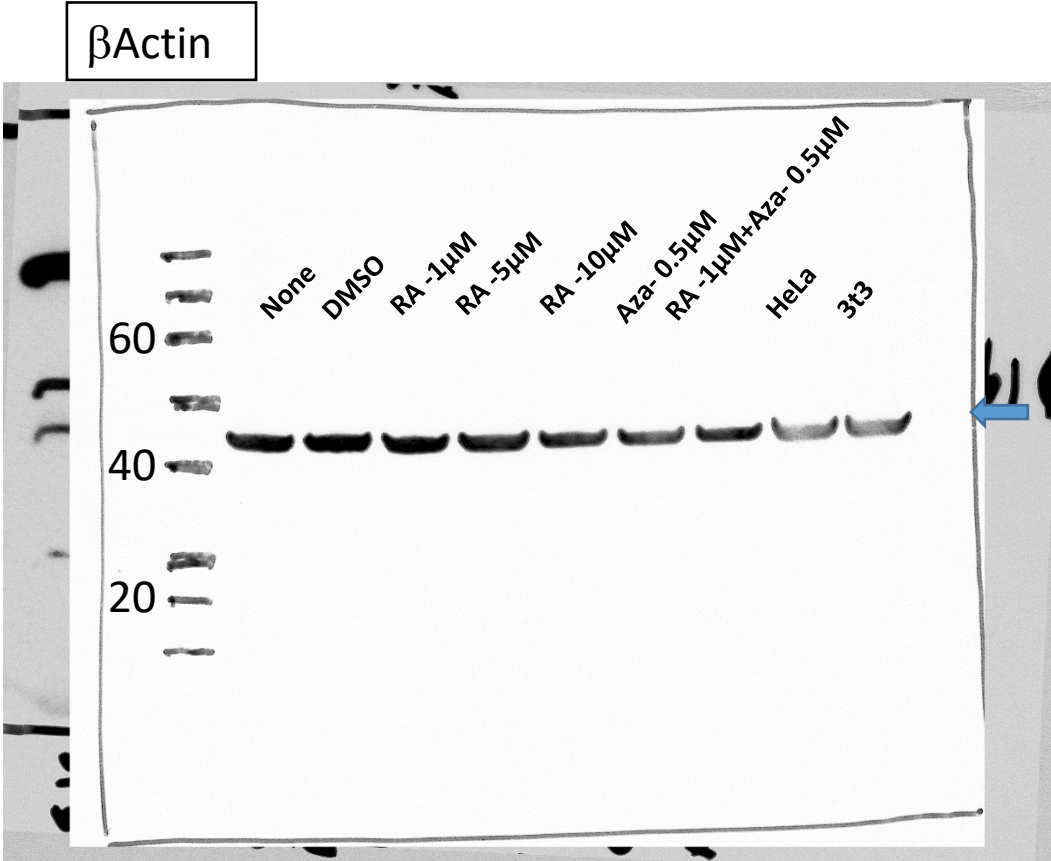


p16/CDKN2A

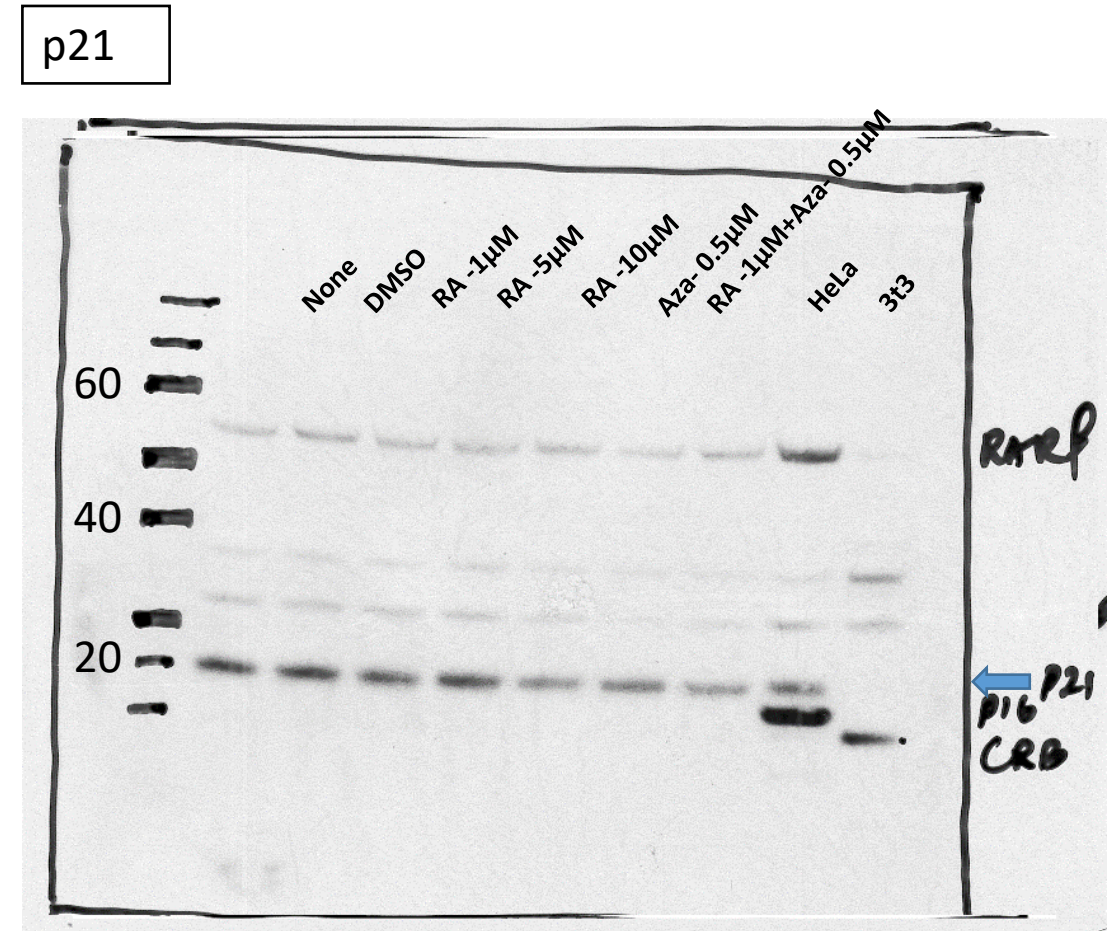
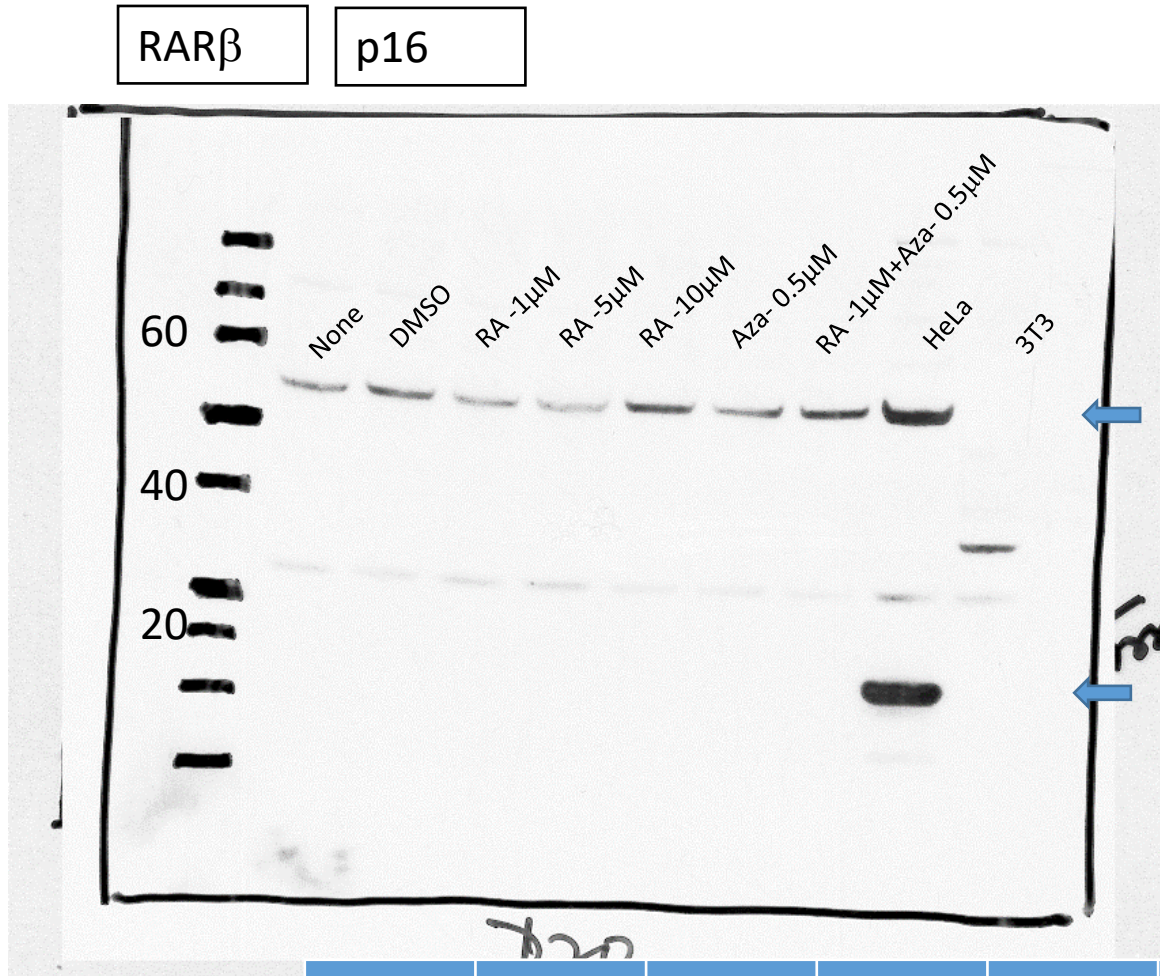


	No Rx	DMSO	RA 1uM	RA 5uM	RA10uM	Aza 0.5uM	RA+Aza	HeLa	i3t3
RARB	0.02	0.01	0.01	0.04	0.04	0.06	0.07	0.39	0.03
p16	0.00	0.00	0.00	0.00	0.00	0.00	0.00	0.94	0.00

Original blots for figure 3B: D20

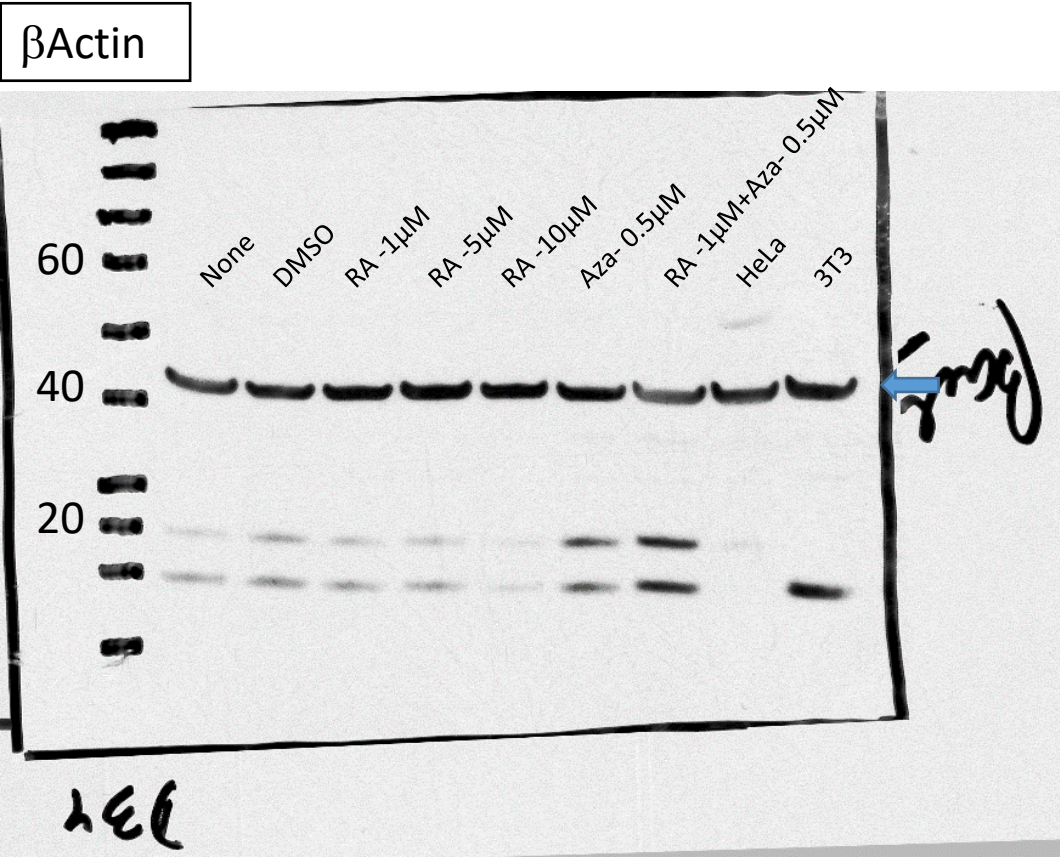


Original blots for figure 3B: D20, with densitometry relative to B actin

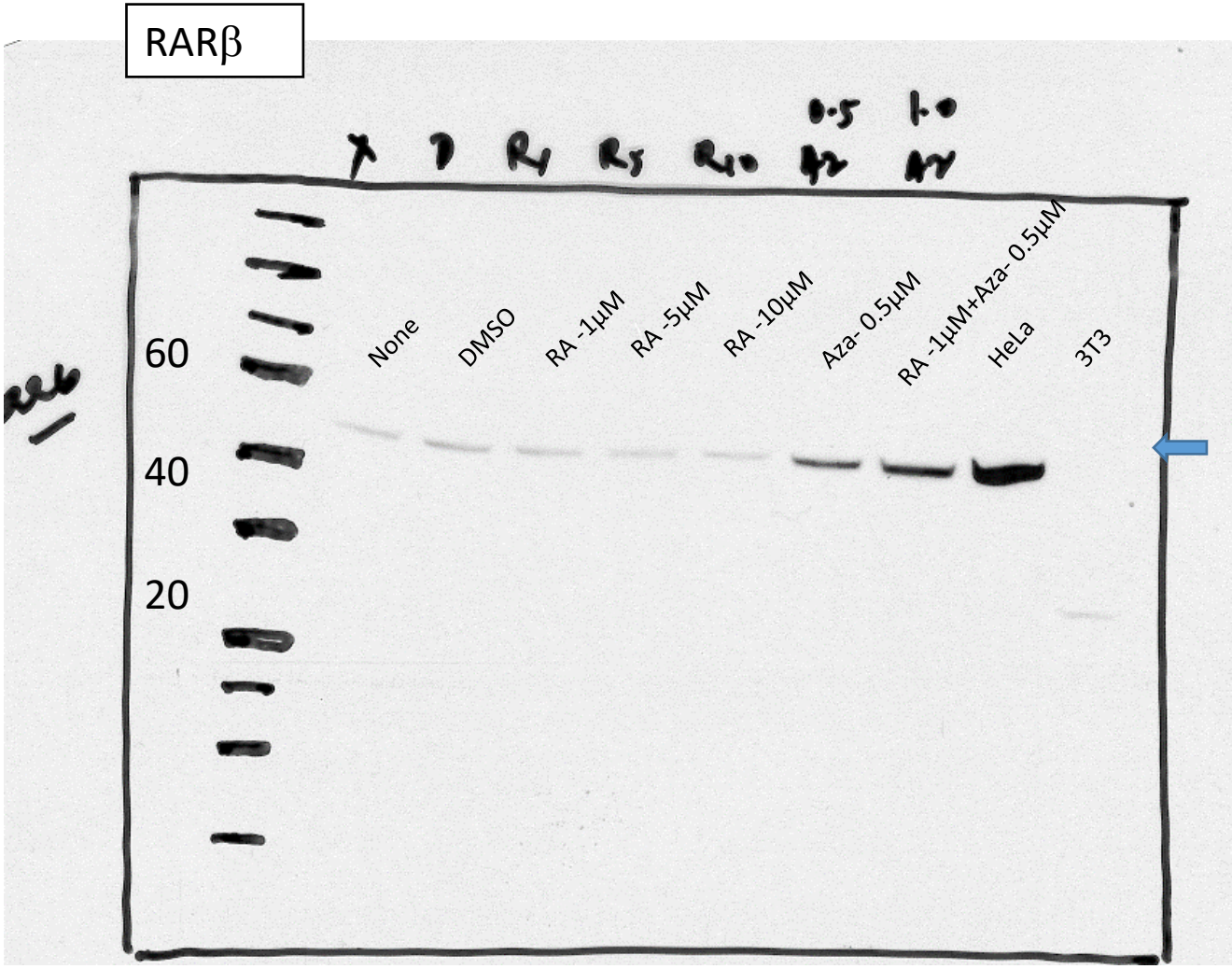


	DMSO	No Rx	RA 1 μ M	RA 5 μ M	RA10 μ M	Aza 0.5 μ M	RA+Aza	HeLa	i3t3
RARB	0.50	0.64	0.36	0.36	1.19	0.93	1.41	3.83	0.02
p21	1.17	1.02	0.93	1.21	0.85	1.24	0.81	1.23	0.02
p16	0.02	0.01	0.02	0.01	0.02	0.02	0.03	6.65	0.02

Original blots for figure 3B: D34

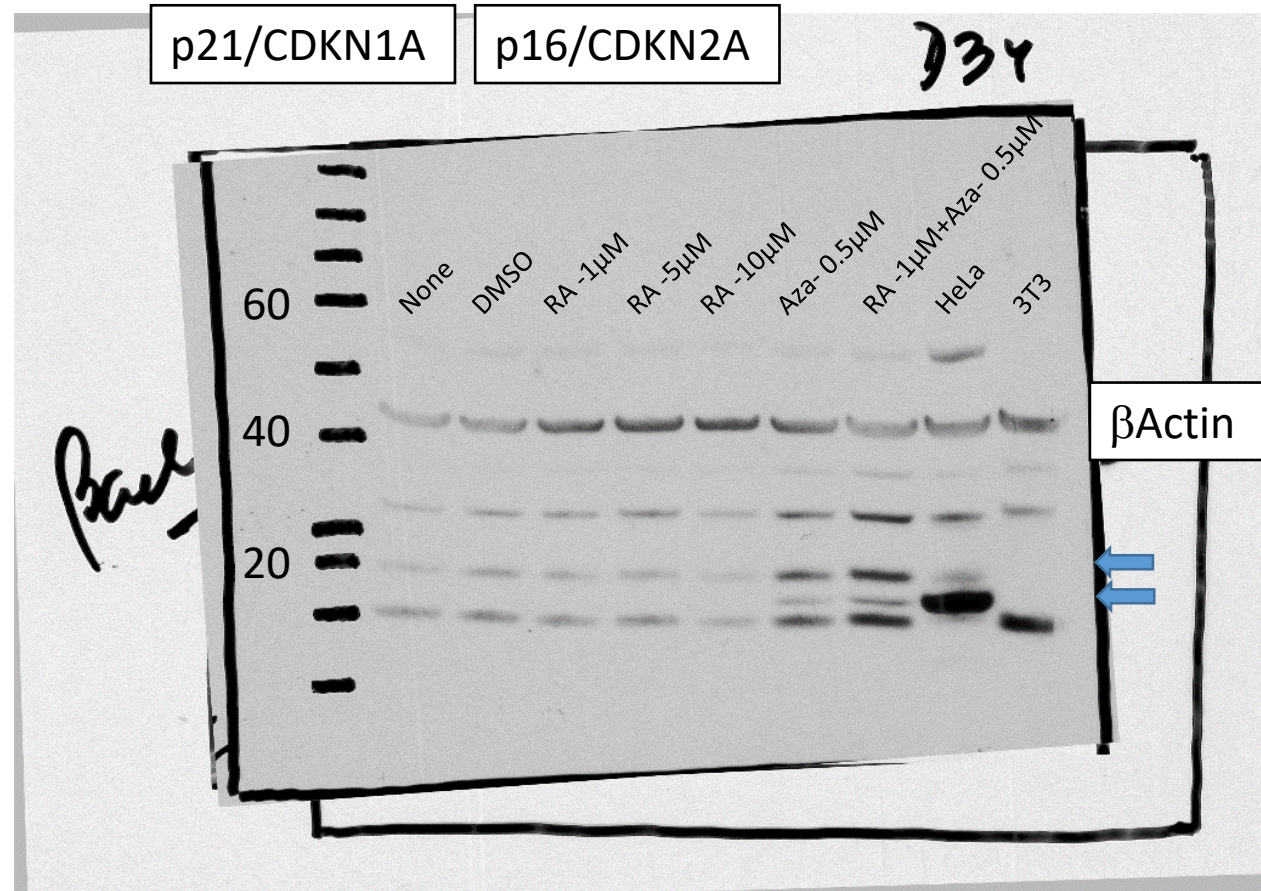


Original blots for figure 3B: D34, with densitometry relative to B actin



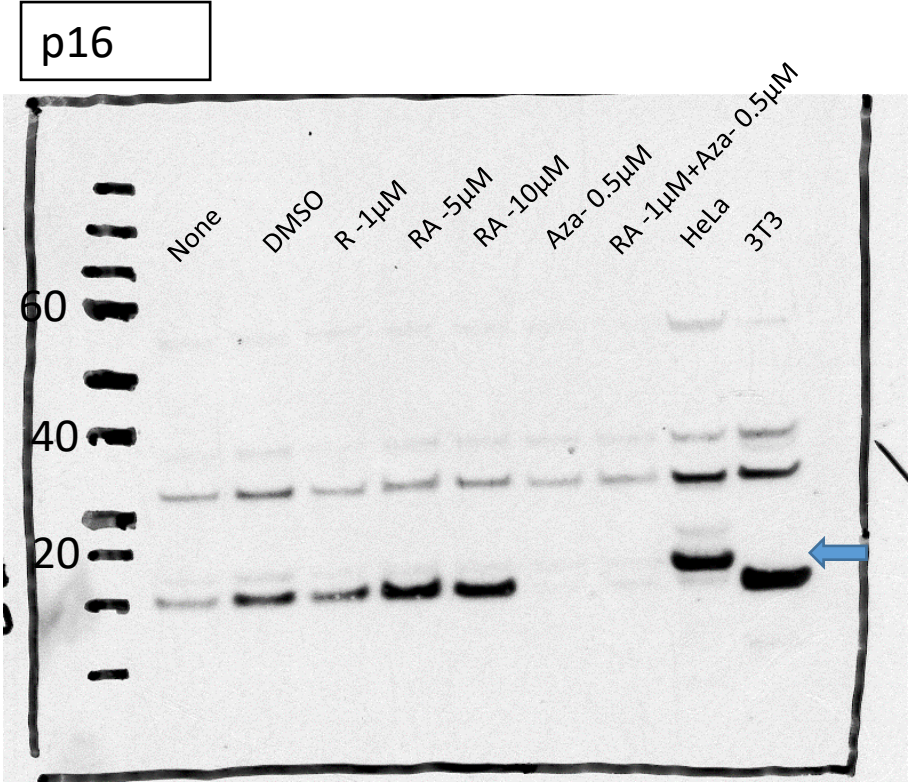
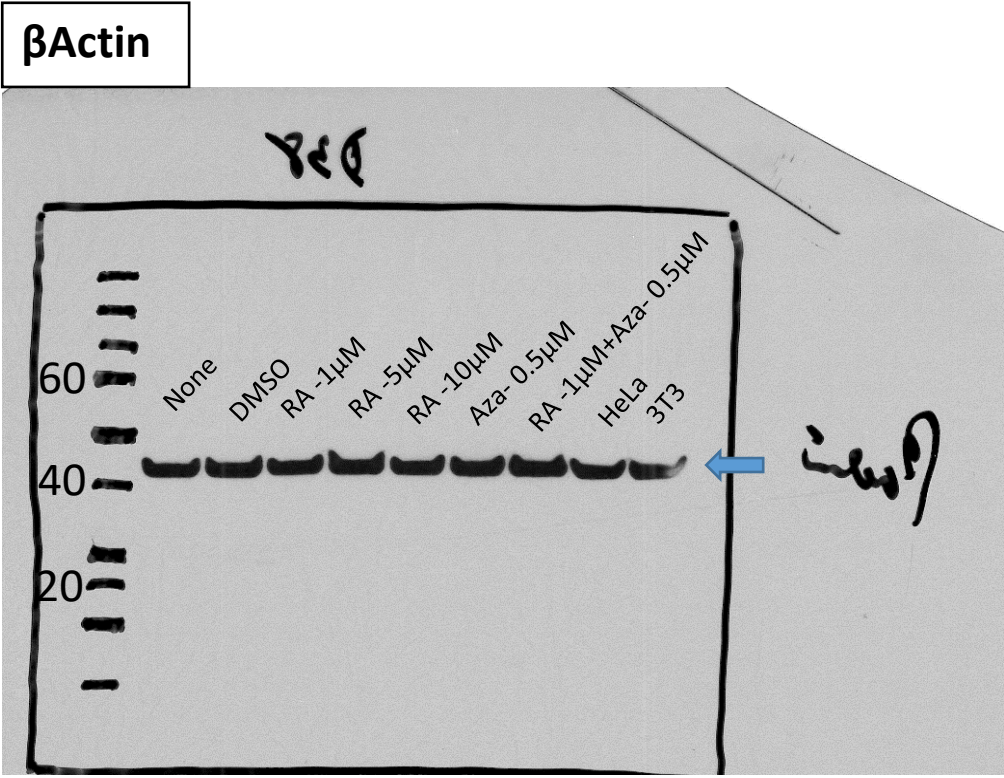
	None	DMSO	RA 1uM	RA 5uM	RA10uM	Aza 0.5uM	RA+Aza	HeLa	i3t3
RARB	0.21	0.34	0.22	0.18	0.15	1.18	3.10	5.46	0.00

Original blots for figure 3B: D34, with densitometry relative to B actin



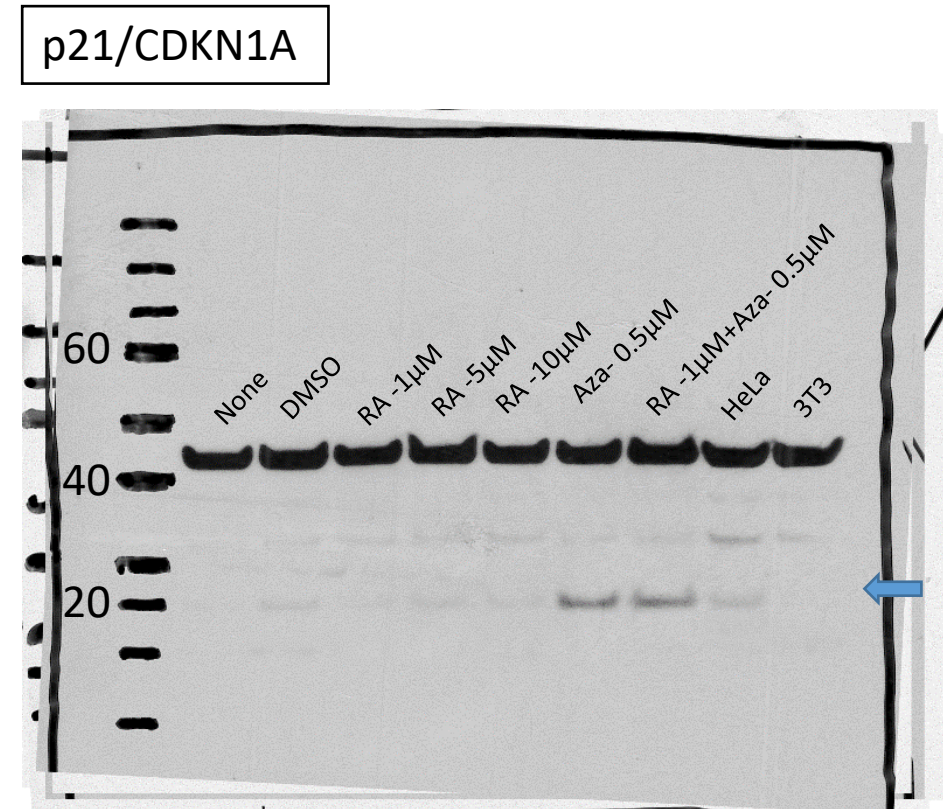
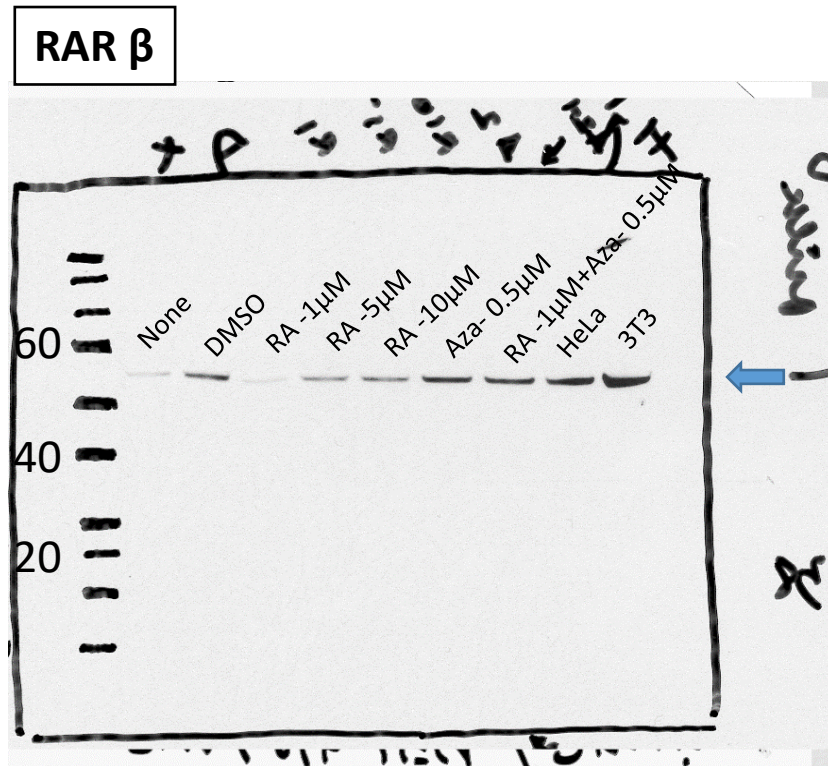
	None	DMSO	RA 1uM	RA 5uM	RA10uM	Aza 0.5uM	RA+Aza	HeLa	i3t3
p21	0.17	0.30	0.19	0.19	0.12	0.68	1.69	0.32	0.00
p16	0.00	0.00	0.00	0.00	0.00	0.01	0.08	1.83	0.00

Original blots for figure 3B: D38, with densitometry relative to B actin



	No Rx	DMSO	RA 1uM	RA 5uM	RA10uM	Aza 0.5uM	RA+Aza	HeLa	i3t3
p16	0.02	0.04	0.00	0.01	0.00	0.01	0.01	0.53	0.00

Original blots for figure 3B: D38, with densitometry relative to B actin



	No Rx	DMSO	RA 1uM	RA 5uM	RA10uM	Aza 0.5uM	RA+Aza	HeLa	i3T3
RARB	0.15	0.32	0.16	0.23	0.30	0.45	0.38	0.57	0.84
p21	0.03	0.06	0.04	0.03	0.02	0.29	0.26	0.09	0.02